

Supplementary material

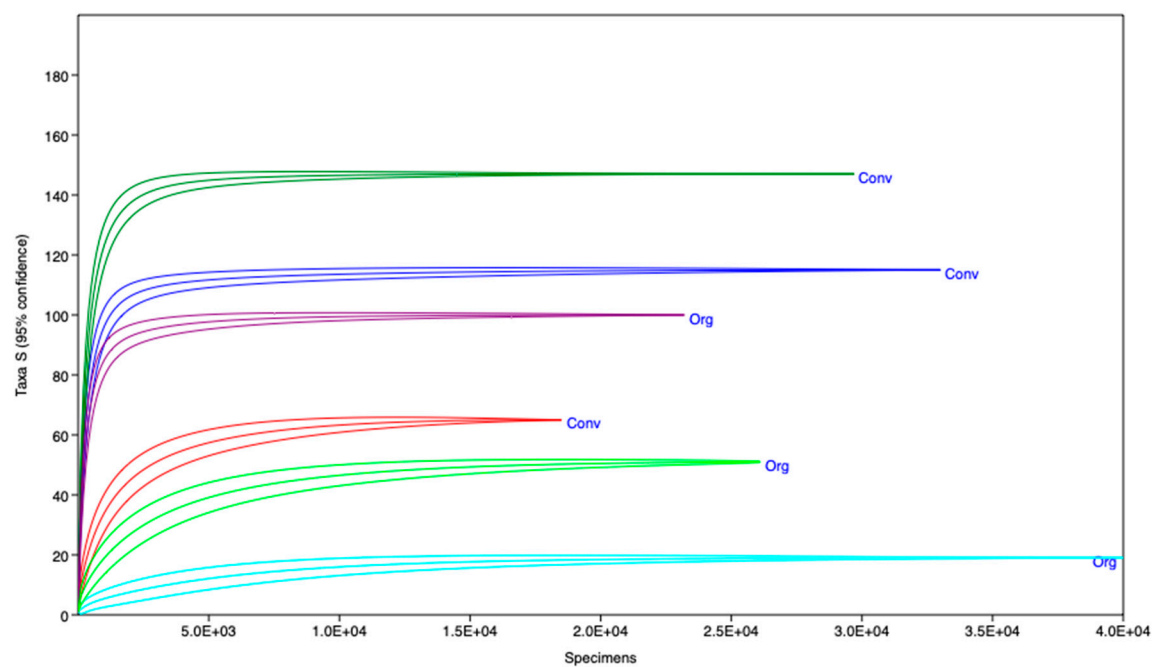


Figure S1. Rarefaction curves of community richness estimates of IPM (Conv) and (Organic) raspberry samples.

Table S1. Diversity indexes for IPM and organic raspberry samples.

	<i>Organic</i>	<i>IPM</i>
<i>Taxa (S)</i>	147	269
<i>Individuals (n)</i>	29955	27216
<i>Simpson (1-D)</i>	0.7272	0.9146
<i>Shannon (H)</i>	2.008	3.626
<i>Equitability (J)</i>	0.4024	0.6481
<i>Chao-1</i>	154.5	282

Table S2. Table S2: Emission (mean ± SE) and tentative identification of *m/z* fragments detected by PTR-MS analysis of raspberry juice cultures of bacterial isolates, and loadings of each *m/z* fragment on principal components 1, 2 and 3 of the PCA built on in silico fruit emissions. Nd = not detected. See attached excel file.