

Health Status of Bycaught Common Eiders (*Somateria mollissima*) from the Western Baltic Sea

Luca A. Schick ¹, Peter Wohlsein ², Silke Rautenschlein ³, Arne Jung ³, Joy Ometere Boyi ¹, Gildas Glemarec ⁴, Anne-Mette Kroner ⁴, Stefanie A. Barth ⁵ and Ursula Siebert ^{1,*}

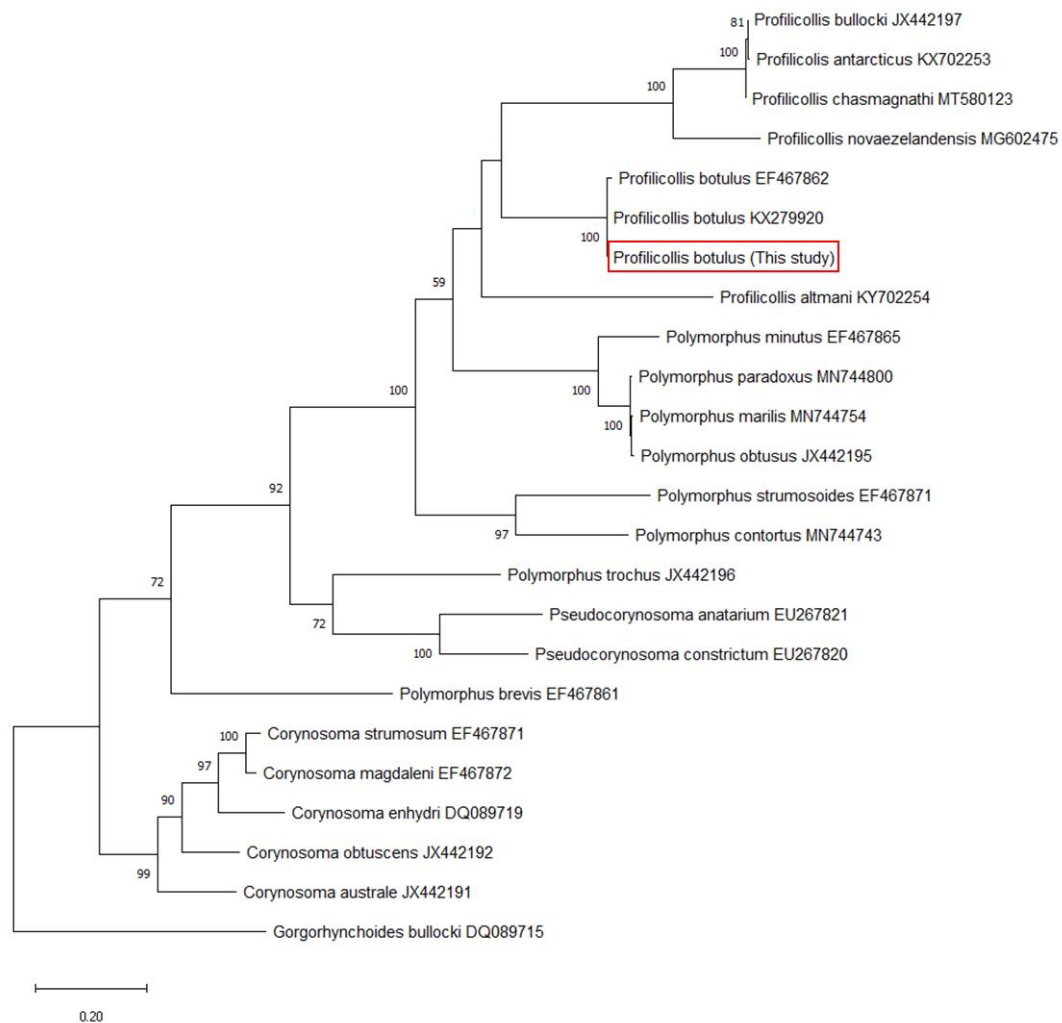


Figure S1. Maximum likelihood analysis of phylogenetic relationships of *Profilicollis botulus* in relation to other members of the Polymorphidae family using Cytochrome oxidase subunit I (COI) sequences. *Gorgorhynchoides bullocki* was designated as outgroup. Nodal support is indicated by bootstrap values ($n = 1000$ bootstrap replicates), values below 50% are not shown. The sequence in the red box is from this study.