

Supplementary Materials: Regional Lithological Mapping Using ASTER-TIR Data: Case Study for the Tibetan Plateau and the Surrounding Area

Yoshiki Ninomiya and Bihong Fu

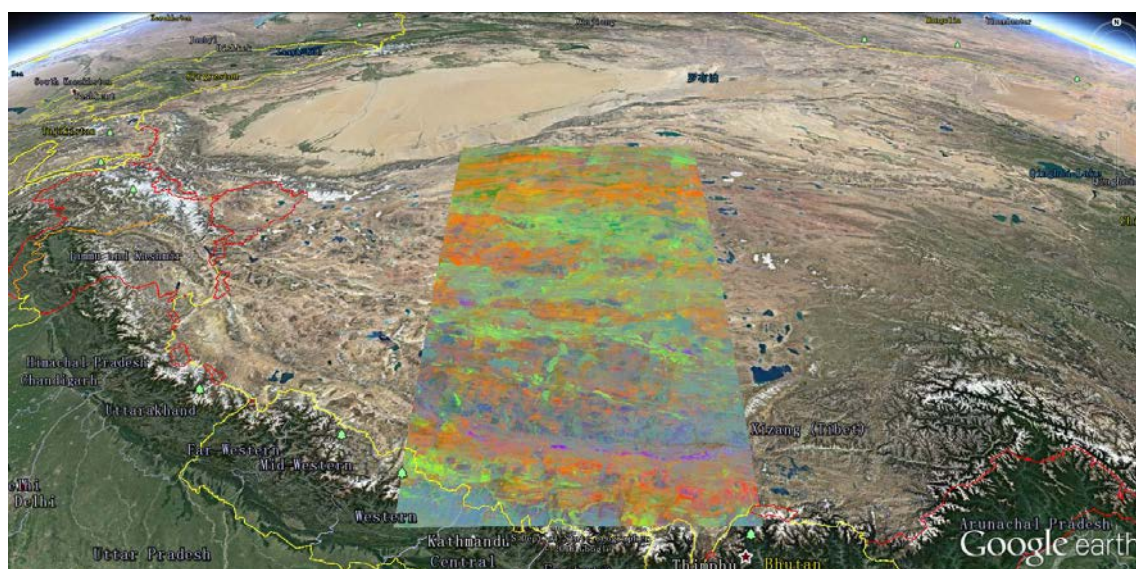


Figure S1. Mosaic color composite image of QI, CI and MI with a linear contrast stretch of 0.97–1.055 (QI; Red), 1.005–1.055 (CI; Green) and 0.79–0.95 (MI; Blue), produced with ASTER Level-3A products covering the entire study area. The pixel is re-sampled every 9 s, and the image is compressed with jpeg format. This file is converted from Figure 4 without annotations.

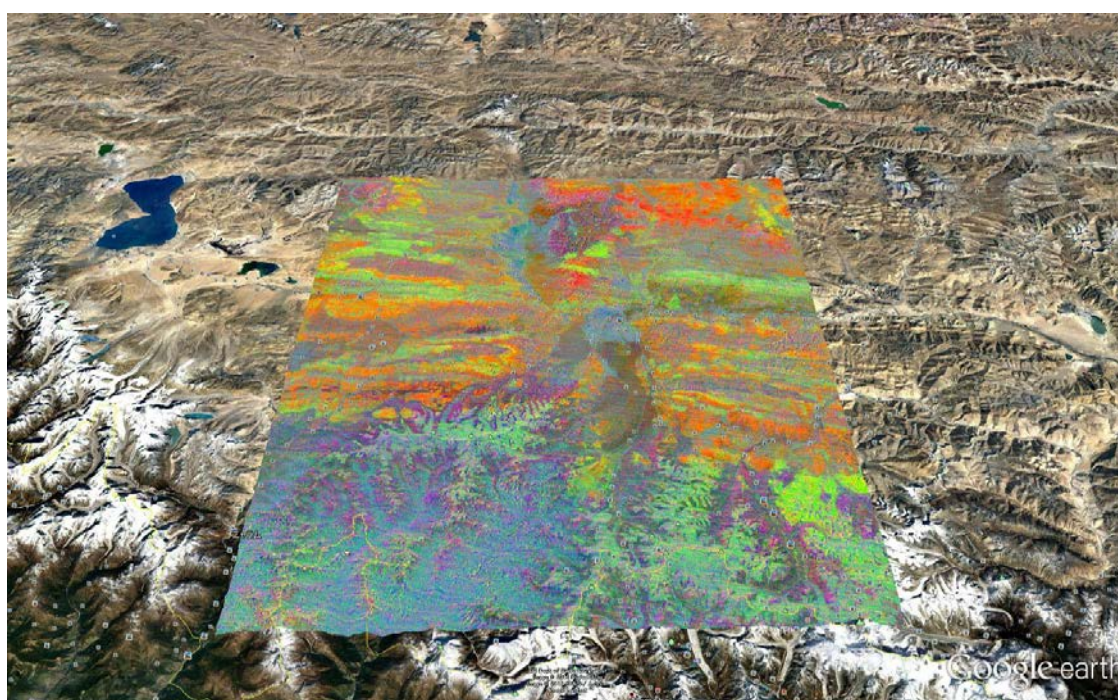


Figure S2. Mosaic color composite image of QI, CI and MI with a linear contrast stretch of 0.97–1.055 (QI; Red), 1.005–1.055 (CI; Green) and 0.79–0.95 (MI; Blue), produced with ASTER Level-3A products covering the north western part of Mt. Everest bounded by latitude 28° N to 29° N and longitude 86° E to 87° E. The pixel is re-sampled every 3 s, and the image is not compressed. This file is converted from Figure 7c.