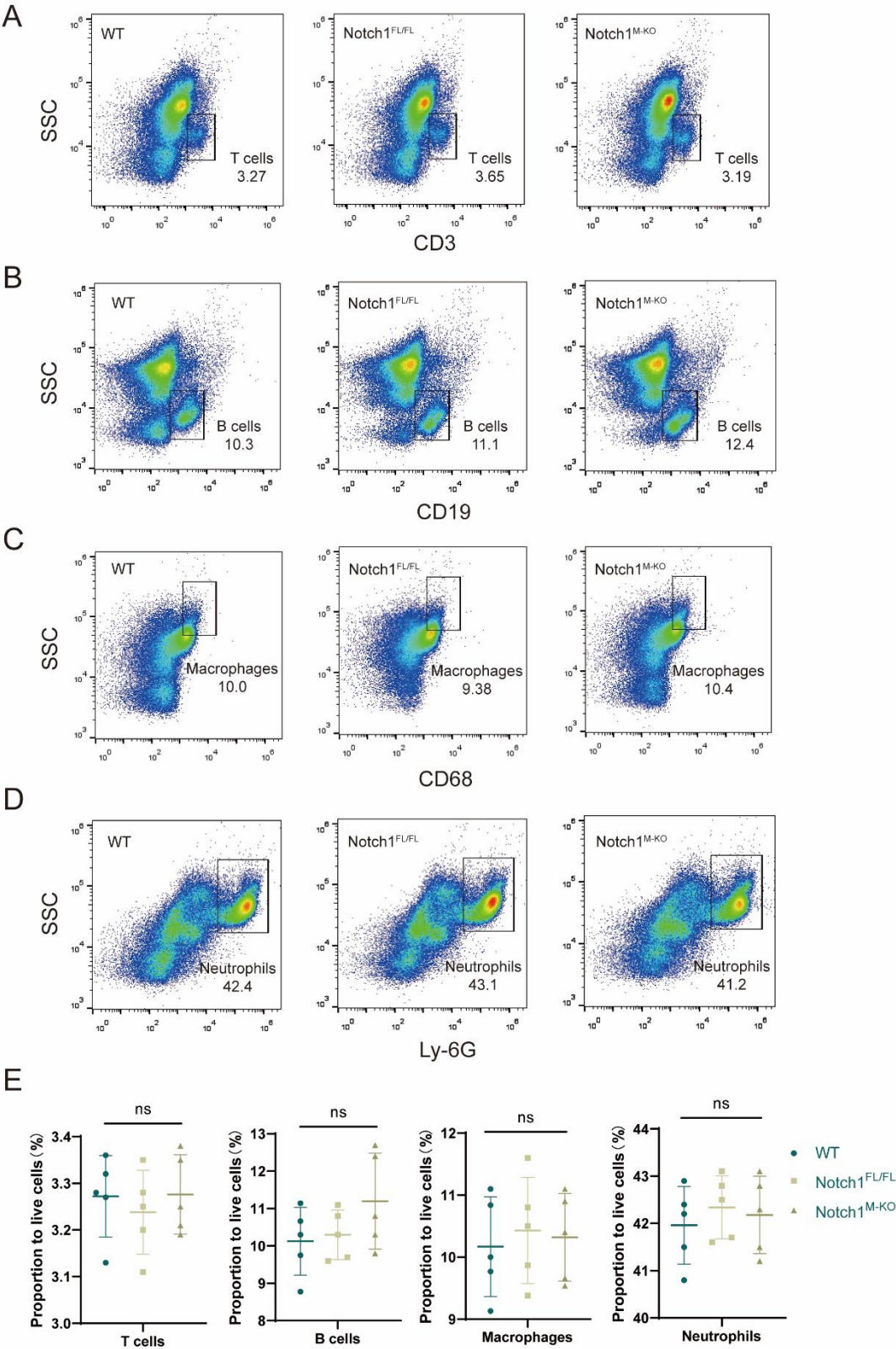


Flow immunoassay of myeloid cells

Figure S1

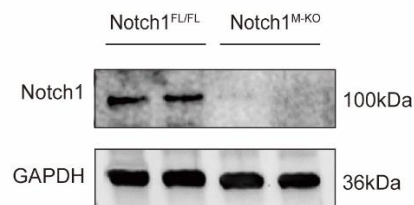


### Figure S1

(A) Gating strategy to identify T cells (CD3+). (B) Gating strategy to identify B cells (CD19+). (C) Gating strategy to identify macrophages (CD68+). (D) Gating strategy to identify neutrophils (Ly6G+). (E) Statistical analyses of the proportion of T cells, B cells, macrophages and neutrophils to total live cells (%). (n=5 mice/group), Mean  $\pm$  SD. ns: no statistical difference.

Antibody	Company	Catalogue#	Fluorochrome
CD3	BD Biosciences	561798	FITC
CD19	Biolegend	115528	Alexa Fluor <sup>®</sup> 700
CD68	Biolegend	137010	PerCP/Cy5.5
Ly6G	BD Biosciences	551461	PE

### Figure S2



### Figure S2

Representative Western blot bands of protein Notch1 in myeloid cells of Notch1<sup>M-KO</sup> mice and Notch1<sup>FL/FL</sup> mice.