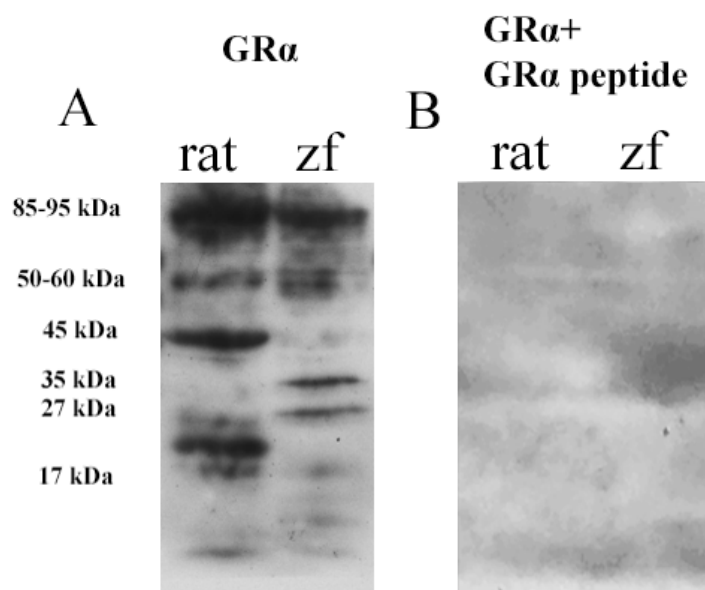


Supplementary Table S1. Antibodies and their concentrations used.

Antibody	Source	Host species	Dilution
GR α rabbit polyclonal antibody	(Santa Cruz Biotechnology, Cat# sc-1002, RRID: AB_2155788)	Rabbit	1:100 in PBS with 0.5% Triton X-100
α - tubulin antibody	(Sigma-Aldrich Cat# T5168, RRID: AB_477579)	Mouse	1:6000 in TBS-Tween with 2% nonfat dried milk
monoclonal anti-TH antibody	(Chemicon, Cat# MAB318, RRID: AB_2201528)	Mouse	1:1000 in PBS with 0.5% Triton X-100
monoclonal anti-GFAP antibody	(Sigma, clone G-A-5 Cat# G3893, RRID: AB_477010)	Mouse	1:1000 in PBS with 0.5% Triton X-100
polyclonal anti- v-GLUT antibody	(Millipore, Cat# MAB5504, RRID: AB_2187552)	Mouse	1:1000 in PBS with 0.5% Triton X-100
monoclonal antibody against anti- β 2-AR	(Santa Cruz, Cat# sc-81577, RR11E1, RRID:AB_1119478)	Mouse	1:300 in PBS with 0.5% Triton X-100



Supplementary Figure S1. Western immunoblot experiments to compare the migration of the $GR\alpha$ immunoreacting proteins in mammalian and teleostean brains.