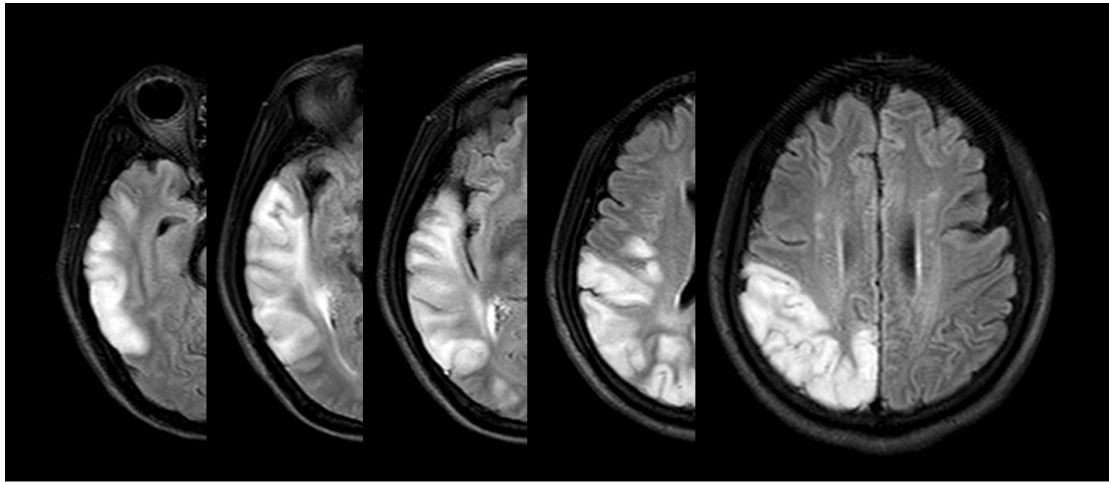
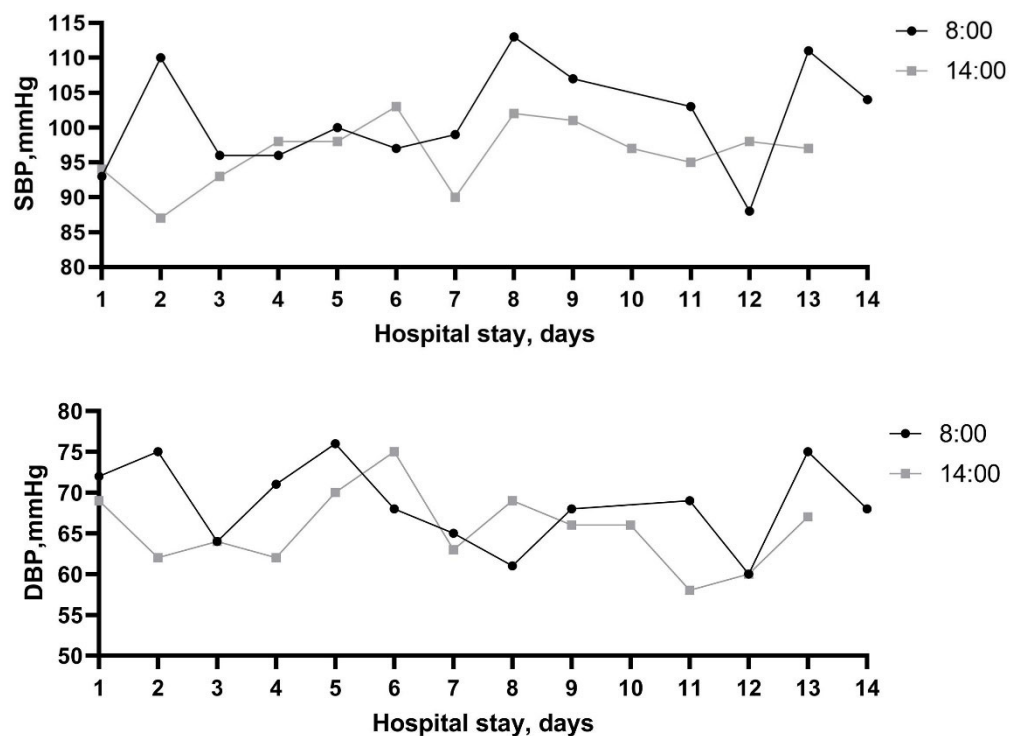


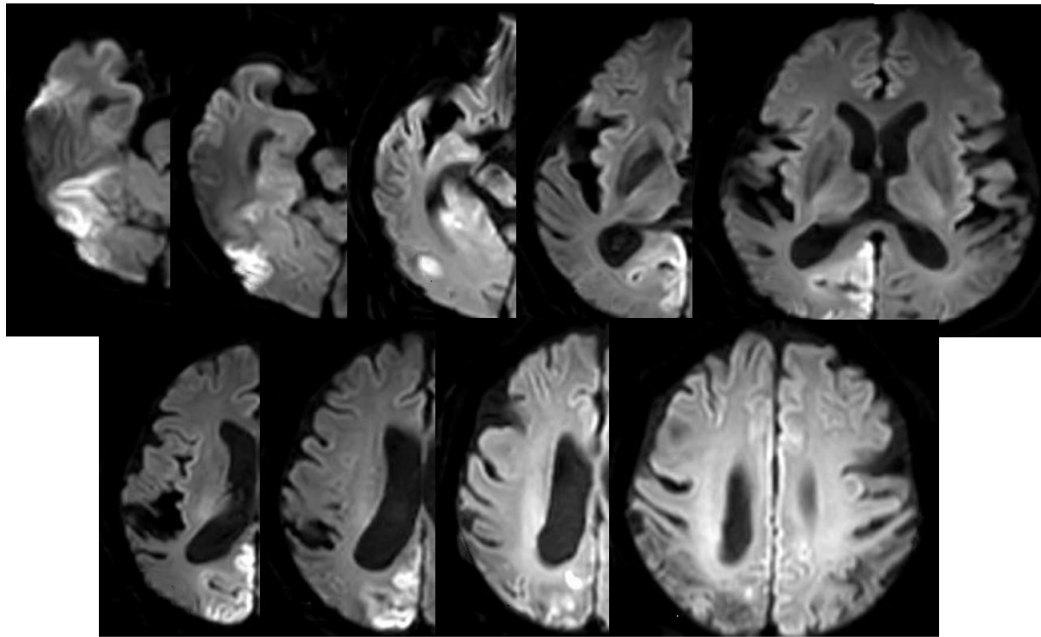
## Supplementary Material



**Figure S1.** The patient experienced his first stroke-like episode two years ago, prior to the current hospitalization, and was diagnosed with right parieto-occipital temporal lobe cerebral infarction. Brain diffusion-weighted image (DWI) shows right parieto-occipital temporal lobe infarction lesion.



**Figure S2.** Changes of blood pressure levels during the first time of hospitalization.



**Figure S3.** MRI shows multiple acute infarct-like lesions in the right parieto-occipital lobe and bilateral temporal gyrus.