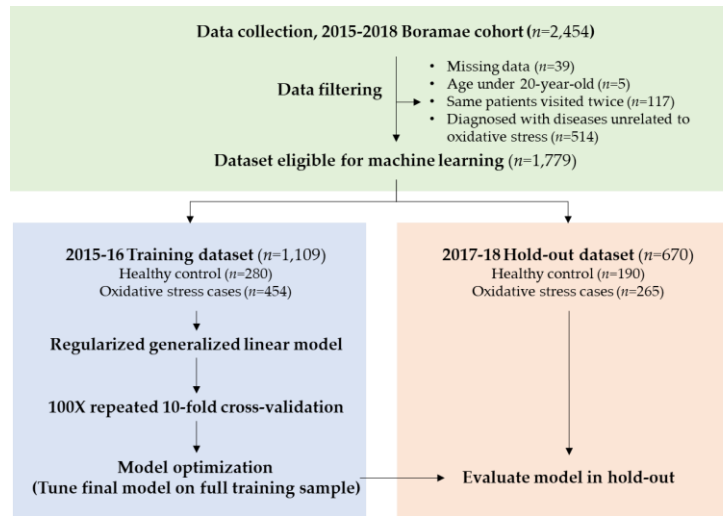
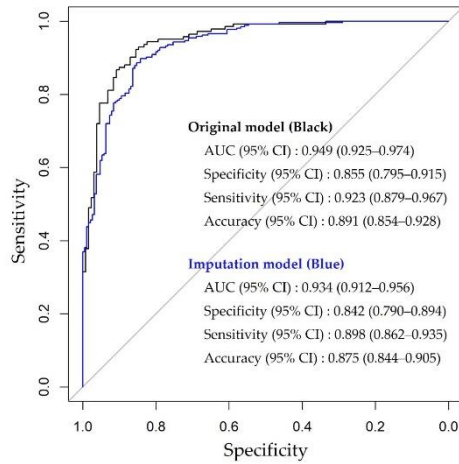


**Figure S1.** Classification of oxidative stress-related disease

(A)



(B)

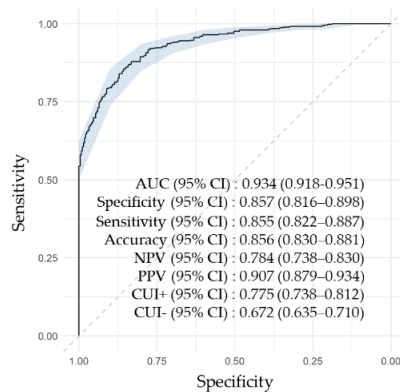


Selected features:

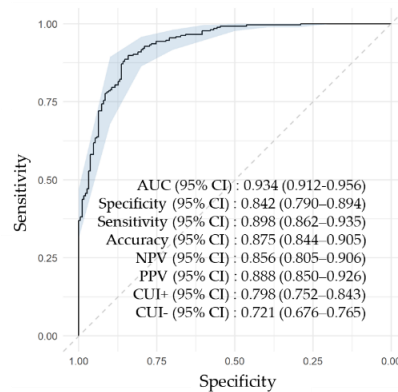
Age, Plasma MDA, BMI, RFS, HbA1c,  
GPT, GGT, Bilirubin, Albumin, WBC,  
RBC, Hb, RDW, Monocytes, Basophils,  
MCHC

(C)

(A) Internal validation (training dataset)



(B) External validation (holdout dataset)



**Figure S2.** Analysis of missing data. (A) the schematic of the analysis, (B) selected features and performance test using receiver operating characteristic curve of best performing model, compared with the original model ( $p=0.376$ ), and (C) internal and external validation. The diagonal line represents the reference line of 0.5. AUC, area under the curve; CI, confidence interval.

**Table S1.** Comparison of healthy controls in the training set and those in the hold-out set.

Features	Normal range	Healthy controls		<i>p</i> -value
		2015–2016 Training set ( <i>n</i> = 248)	2017–2018 Hold-out set ( <i>n</i> = 131)	
General characteristics (10)				
Age (years)	-	42.7 ± 10.4	38.3 ± 10.0	0.0001
Sex (males; <i>n</i> , %)	-	101 (40.7)	47 (35.9)	0.358
Current smoker <i>n</i> (%)	-	23 (9.3)	5 (3.8)	0.053
Smoking duration (years)	-	4.5 ± 9.0	3.1 ± 6.8	0.091
Smoking pack-year	-	3.3 ± 7.6	2.4 ± 6.4	0.215
Current drinker <i>n</i> (%)	-	145 (58.5)	78 (59.5)	0.840
Recommended food score	-	21.6 ± 8.3	20.5 ± 8.7	0.215
Physical activity (min/day)	-	128.5 ± 120.1	119.2 ± 113.8	0.465
Body mass index (kg/m²)	-	21.5 ± 2.2	21.2 ± 2.2	0.261
Body fat (%)	-	25.5 ± 6.4	26.0 ± 6.4	0.417
Biochemical characteristics (14)				
Albumin (g/dL)	3.5-5.2	4.3 ± 0.2	4.4 ± 0.2	0.001
Alkaline phosphatase (IU/L)	44-147	62.5 ± 17.8	62.3 ± 17.2	0.908
Bilirubin (mg/dL)	0.1-1.2	1.2 ± 0.5	1.1 ± 0.4	0.101
Blood urea nitrogen (mg/dL)	8-23	12.8 ± 3.5	11.6 ± 2.8	0.0004
Creatinine (μmol/L)	Male: 61.9-114.9 Female: 53-97.2	68.2 ± 14.1	66.1 ± 12.6	0.154
C-reactive protein (mg/dL)	0-3	0.1 ± 0.2	0.1 ± 0.3	0.787
γ-Glutamyl transferase (IU/L)	0-30	18.4 ± 15.0	17.7 ± 13.7	0.662
GOT (IU/L)	Male 0-40 Female 0-32	22.6 ± 6.8	26.7 ± 56.0	0.405
GPT (IU/L)	Male 0-41 Female 0-33	18.9 ± 12.0	18.6 ± 12.3	0.810
Glycosylated hemoglobin (%)	0-5.7	5.4 ± 0.3	5.3 ± 0.3	0.008
LDL-C (mmol/L)	0-3.5	3.0 ± 0.7	3.0 ± 0.7	0.971
Total cholesterol (mmol/L)	0-5.18	5.0 ± 0.8	5.0 ± 0.8	0.457
Total protein (g/dL)	6.4-8.3	7.1 ± 0.4	7.2 ± 0.3	0.002
Uric acid (mg/dL)	Male: 2.4-6.0 Female: 3.4-7.0	4.8 ± 1.2	4.7 ± 1.1	0.691
Complete blood count data (16)				
Basophils (%)	0.0-2.0	0.4 ± 0.3	0.5 ± 0.3	0.154
Eosinophils (%)	1.0-6.0	2.6 ± 2.2	2.7 ± 2.0	0.800
ESR (mm/h)	Male: 0-22 Female: 0-29	9.0 ± 8.2	9.4 ± 11.9	0.731
Hematocrit (%)	Male: 39-52 Female: 36-48	41.4 ± 4.2	42.7 ± 3.7	0.003
Hemoglobin (g/dL)	Male: 13-17 Female: 12-16	13.9 ± 1.6	14.2 ± 1.5	0.099
Lymphocytes (%)	17.0-46.0	35.3 ± 8.8	36.4 ± 7.9	0.224
MCH (pg)	Male: 27-33 Female: 26-32	30.3 ± 1.9	30.0 ± 1.9	0.208
MCHC (g/dL)	30.0-35.0	33.5 ± 1.0	33.2 ± 0.9	0.001
MCV (fL)	Male: 81-96 Female: 79-95	90.4 ± 4.4	90.6 ± 4.7	0.647
Monocytes (%)	2.0-8.0	5.7 ± 1.5	5.8 ± 1.4	0.736
Neutrophils (%)	38.0-78.0	56.0 ± 9.7	54.7 ± 8.4	0.201

Platelets ( $\times 10^3/\mu\text{L}$ )	130-400	249.1 $\pm$ 51.9	258.5 $\pm$ 54.0	0.101
Platelet distribution width (%)	8.3-56.6	11.8 $\pm$ 1.6	11.8 $\pm$ 1.5	0.734
Red blood cell count ( $\times 10^6/\mu\text{L}$ )	Male: 4.2-6.3 Female: 4.0-5.4	4.6 $\pm$ 0.4	4.7 $\pm$ 0.4	0.004
RDW (%)	Male: 12.2-16.1 Female: 11.8-14.5	13.1 $\pm$ 1.0	13.1 $\pm$ 1.1	0.998
White blood cell count ( $\times 10^3/\mu\text{L}$ )	4.0-10.0	5.2 $\pm$ 1.3	5.2 $\pm$ 1.3	0.959
<b>High-performance liquid chromatography analysis data (3)</b>				
Plasma MDA (mM)	-	4.4 $\pm$ 2.4	4.3 $\pm$ 2.2	0.622
Erythrocyte MDA (mM)	-	6.1 $\pm$ 6.2	8.8 $\pm$ 8.6	0.002
Urine MDA (mM)	-	2.9 $\pm$ 1.8	2.7 $\pm$ 1.7	0.369

Values are mean  $\pm$  SD or number (percentage). Differences between the groups were compared using Student's *t*-test for continuous variables and Chi-square tests for categorical variables. AP, alkaline phosphatase; BMI, body mass index; BUN, blood urea nitrogen; CRP, C-reactive protein; GOT, glutamate oxaloacetate transaminase; GPT, glutamate pyruvate transaminase; GT,  $\gamma$ -Glutamyl transferase; LDL-C, low-density lipoprotein cholesterol; ESR, erythrocyte sedimentation rate; MCH, mean corpuscular hemoglobin; MCHC, mean corpuscular hemoglobin concentration; MCV, mean corpuscular volume; MDA, malondialdehyde; PDW, platelet distribution width; RDW, red blood cell distribution width; RFS, recommended food score; TC, total cholesterol.