

Supplementary Materials

Estrogen receptor beta (ERβ) maintains mitochondrial network regulating invasiveness in an obesity-related inflammation condition in breast cancer.

Toni Martinez-Bernabe^{1,2†}, Jorge Sastre-Serra^{1,2,3†}, Nicolae Ciobu¹, Jordi Oliver^{1,2,3}, Daniel Gabriel Pons^{1,2,*} and Pilar Roca^{1,2,3}

Order: MCF7C/MCF7ELIT/MW/T47DC/T47DELIT/MCF7C/MCF7ELIT/T47DC/T47DELIT
Rel. Int.: 36 / 127 / X / 117 / 108 / 106 / 120 / 94 / 92

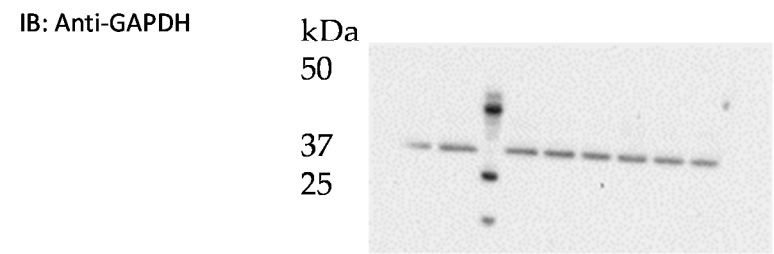


Figure S1. Representative bands and values of Immunoblotting against GAPDH (approximately 37 kDa). Order of wells and Relative intensity values are above the blot image, control situation of each cell line set as 100.

Order: MCF7C/MCF7ELIT/ MCF7C/MCF7ELIT /T47DC/T47DELIT/T47DC/T47DELIT/MW
Rel. Int.: 104 / 152 / 100 / 133 / 109 / 115 / 108 / 108 / X

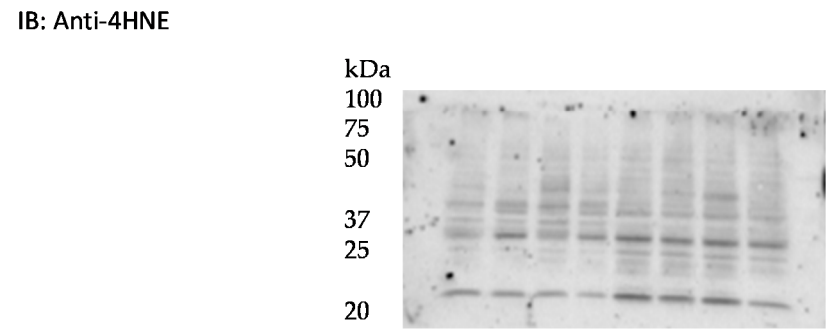


Figure S2. Representative bands and values of Immunoblotting against 4HNE. Order of wells and Relative intensity values are above the blot image, control situation of each cell line set as 100.

Order: T47DC/MW/T47DELIT/T47DC/T47DELIT/MCF7C/MCF7ELIT/MCF7C/X
 Rel. Int.: 103 / 115 / 124 / 175 / 97 / 103 / 126 / 58 / X

IB: Anti-SOD1

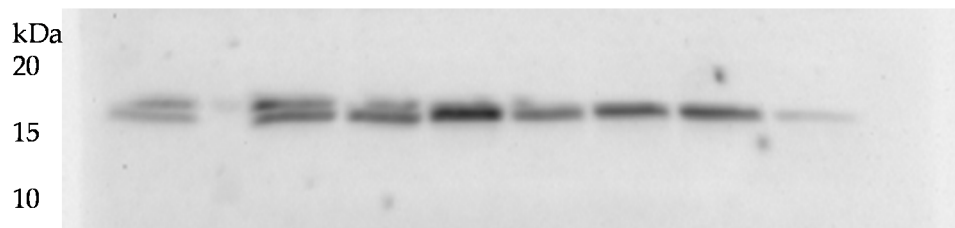


Figure S3. Representative bands and values of Immunoblotting against SOD1 (Approximately 16 kDa). Order of wells and Relative intensity values are above the blot image, control situation of each cell line set as 100.

Order: MCF7C/MCF7ELIT/MW/T47DC/T47DELIT/MCF7C/MCF7ELIT/T47DC/T47DELIT
 Rel. Int.: 110 / 1213 / X / 108 / 4648 / 115 / 1189 / 91 / 3995

IB: Anti-SOD2



Figure S4. Representative bands and values of Immunoblotting against SOD2 (Approximately 25 kDa). Order of wells and Relative intensity values are above the blot image, control situation of each cell line set as 100.

Order: MCF7C/MCF7ELIT/MW/T47DC/T47DELIT/MCF7C/MCF7ELIT/T47DC/T47DELIT
 Rel. Int.: 111 / 45 / X / 114 / 111 / 91 / 49 / 98 / 110

IB: Anti-GRd

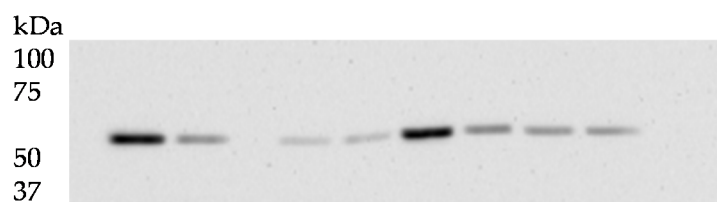


Figure S5. Representative bands and values of Immunoblotting against GRd (Approximately 56 kDa). Order of wells and Relative intensity values are above the blot image, control situation of each cell line set as 100.

Order: MW/MCF7C/MCF7ELIT/T47DC/T47DELIT/MCF7C/MCF7ELIT/T47DC/T47DELIT
 Rel. Int.: X / 97 / 50 / 106 / 60 / 113 / 99 / 105 / 68

IB: Anti-CAT

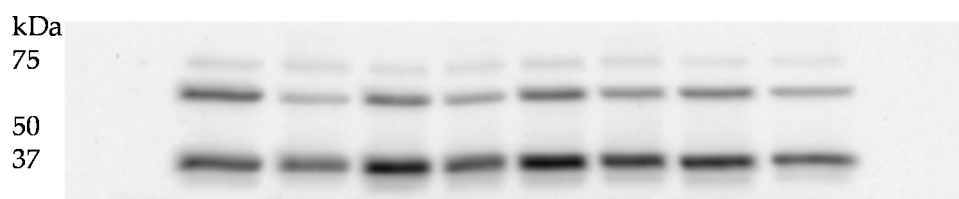


Figure S6. Representative bands and values of Immunoblotting against CAT (Approximately 60 kDa). Order of wells and Relative intensity values are above the blot image, control situation of each cell line set as 100.

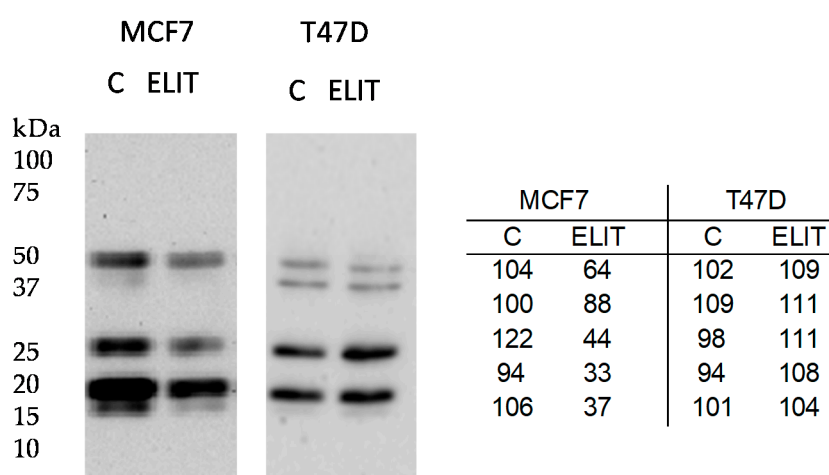


Figure S7. Representative bands and values of Immunoblotting against OXPHOS (Cocktail antibody was used). Order of wells are above the blot image and Relative intensity values in table, control situation of each cell line set as 100.

Order: 1 - MW / MCF7C / MCF7ELIT / MCF7C / MCF7ELIT / MCF7C / MCF7ELIT
 2 - T47DC / MK / T47DELIT / T47DC / T47DELIT / T47DC / x / T47DC / T47DELIT

IB: Anti - COXIV

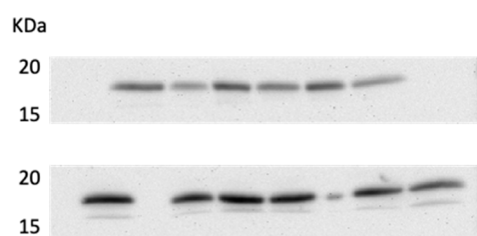


Figure S8. Representative bands and values of Immunoblotting against COXIV.

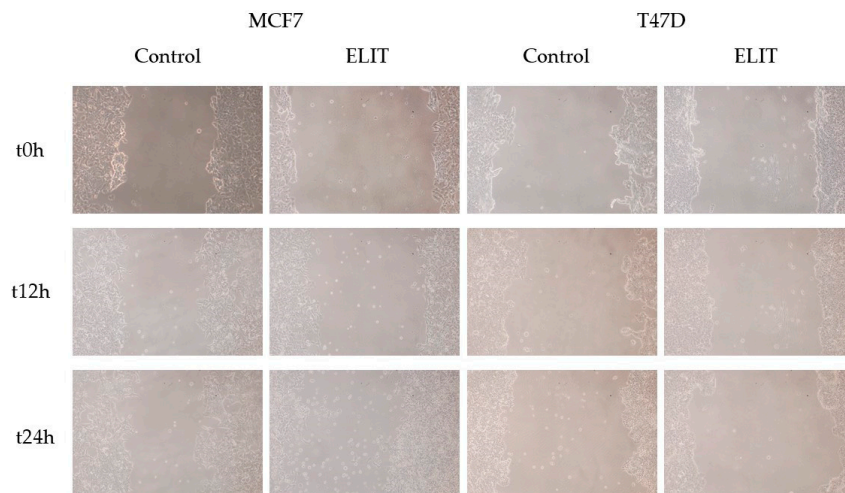


Figure S9. Illustrations of Wound Healing in both MCF7 and T47D cell lines after 0, 12 and 24 hours of ELIT treatment.



© 2021 by the authors. Submitted for possible open access publication under the terms and conditions of the Creative Commons Attribution (CC BY) license (<http://creativecommons.org/licenses/by/4.0/>).