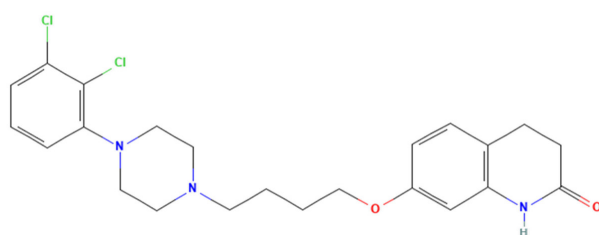


(a)



(b)

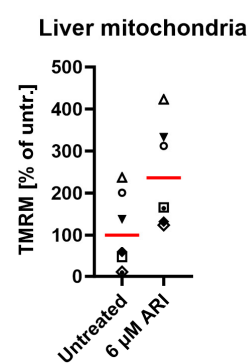


Figure S1: (a) Chemical structure of aripiprazole (PubChem); (b) detailed depiction of biological replicates from Figure 1f.

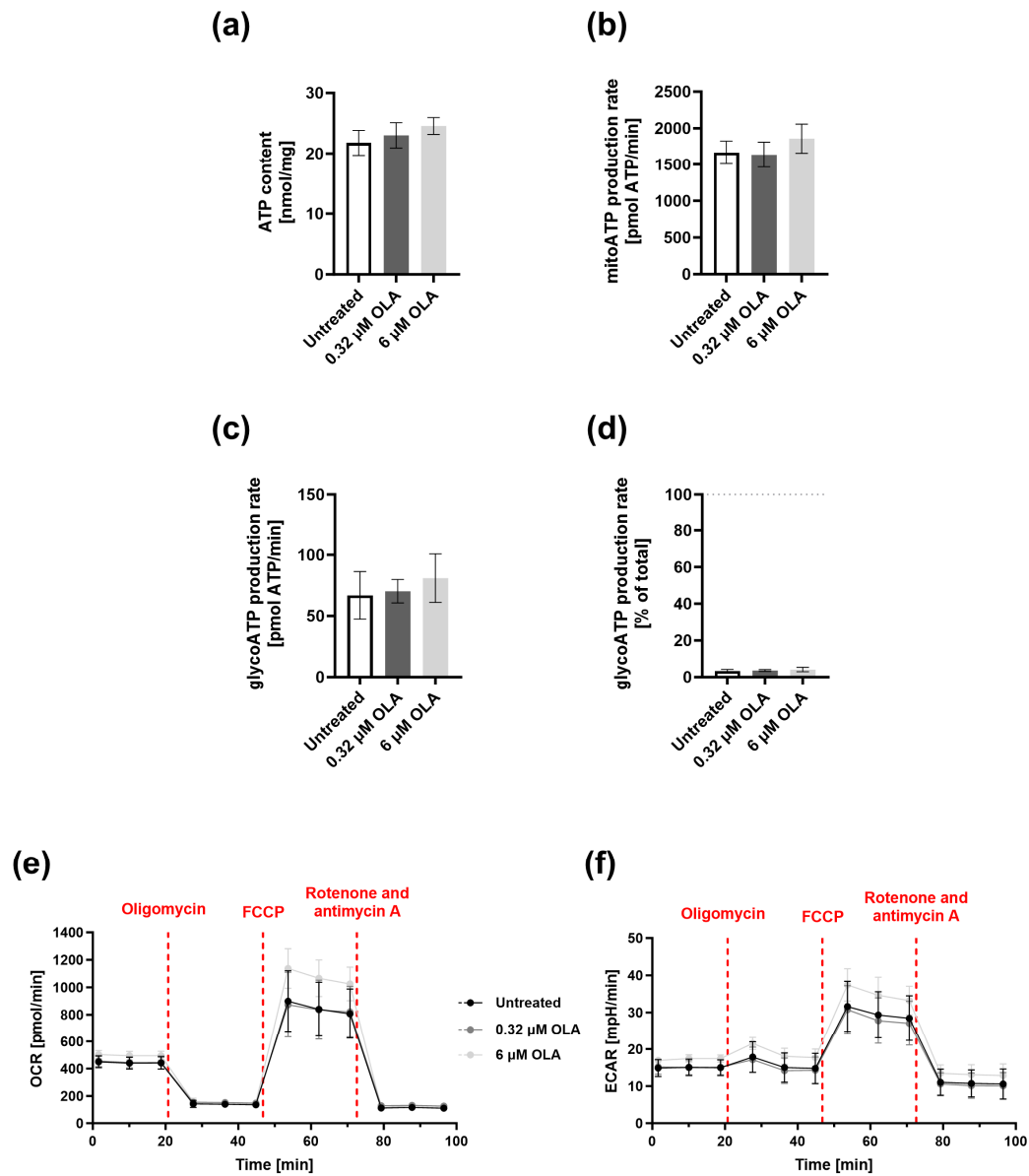
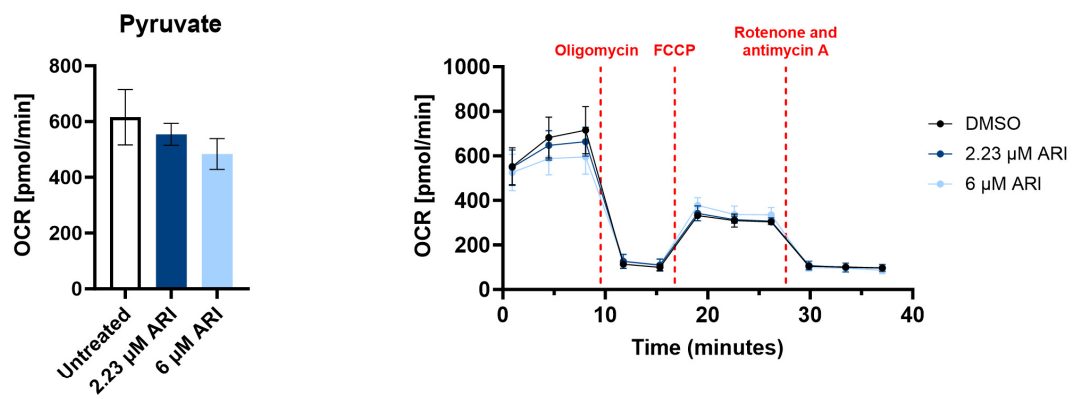
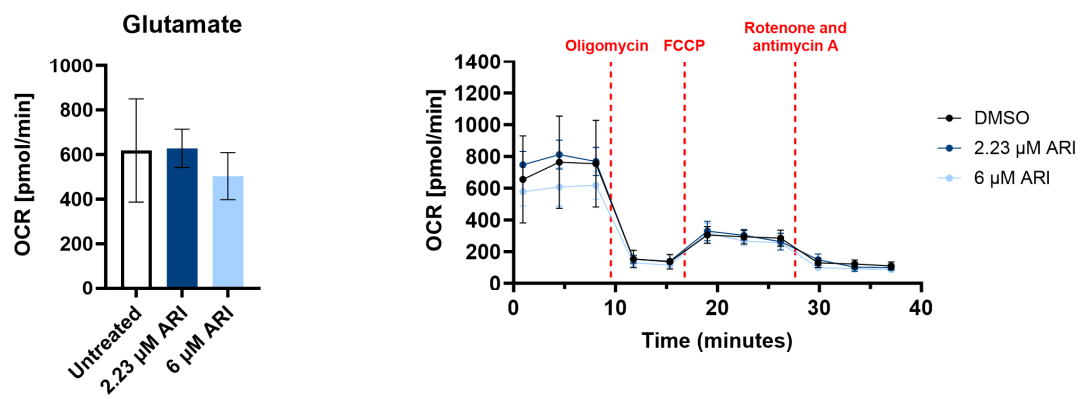


Figure S2: ATP production in Fao cells treated with or without OLA for 24 h (a) Total cellular ATP measured with luminescent assay ($n = 4$). (b) Mitochondrial and (c) glycolytic ATP production rates were calculated from respirometry measurements ($n = 4$). (d) Glycolytic ATP production rate expressed as a percentage of overall ATP production rate. (e) oxygen consumption rate (OCR) values; (f) extracellular acidification rate (ECAR) values ($n = 4$). Data are presented as the mean \pm SD and were analysed with one-way ANOVA.

(a)



(b)



(c)

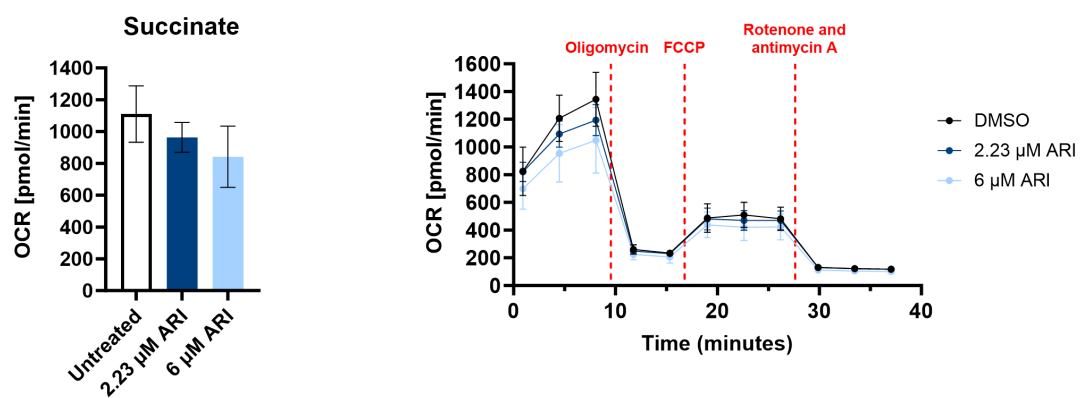


Figure S3: Contribution of individual mitochondrial complexes to OCR ($n = 3$).