



Supplementary Materials

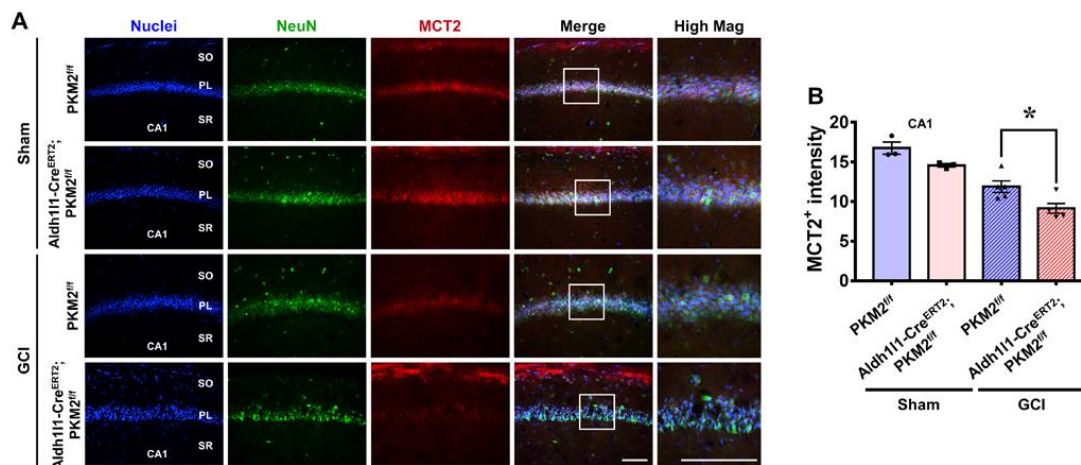


Figure S1. (A) the fluorescent image shows merge of monocarboxylate transporter 2 (MCT2, red), NeuN (living neurons, green) and DAPI (blue). (B) When averaged in the graph, there was no difference in the sham groups. However, MCT2 intensity significantly decreased with PKM2 gene deletion groups in GCI groups. (Sham-PKM2^{fl/fl} group, n = 3; Sham-Aldh1l1-Cre^{ERT2}; PKM2^{fl/fl}, n = 3; GCI-PKM2^{fl/fl} group, n = 5, GCI-Aldh1l1-Cre^{ERT2}; PKM2^{fl/fl}, n = 5). Scale bar = 100 μ m. Data are shown as mean \pm SEM (Kruskal–Wallis test followed by Bonferroni post-hoc test, MCT2: chi square = 12.765, df = 3, p = 0.005) *Significantly different from the GCI-PKM2^{fl/fl} group, Aldh1l1-Cre^{ERT2}; PKM2^{fl/fl} group, p < 0.05.

Table S1. Criteria of the Neurological Severity Score (NSS) in mice.

Task	Measurement	Point
1. Motor dysfunction		
Present of mono- or hemiparesis	Absent	0
	Present	1
2. Body coordination	(Unstable or drop: 1p, Criteria: 0p)	
Walk on a 3cm wide beam	Score	0-1
Walk on a 2cm wide beam	Score	0-1
Walk on a 1cm wide beam	Score	0-1
3. Body balance	(Unstable or drop: 1p, Criteria: 0p)	
Balance on a 1cm wide beam	Score	0-1
Balance on a 0.5cm diameter round stick	Score	0-1
4. Escape from 30cm diameter circle		
	Escape	0
	> 2min	1
5. General behavioral deficit		
Seeking behavior	Present	0
	Absent	1
Walk straight line	Present	0
	Absent	1
6. Startle reflex	Present	0
	Absent	1
Total behavior score		10