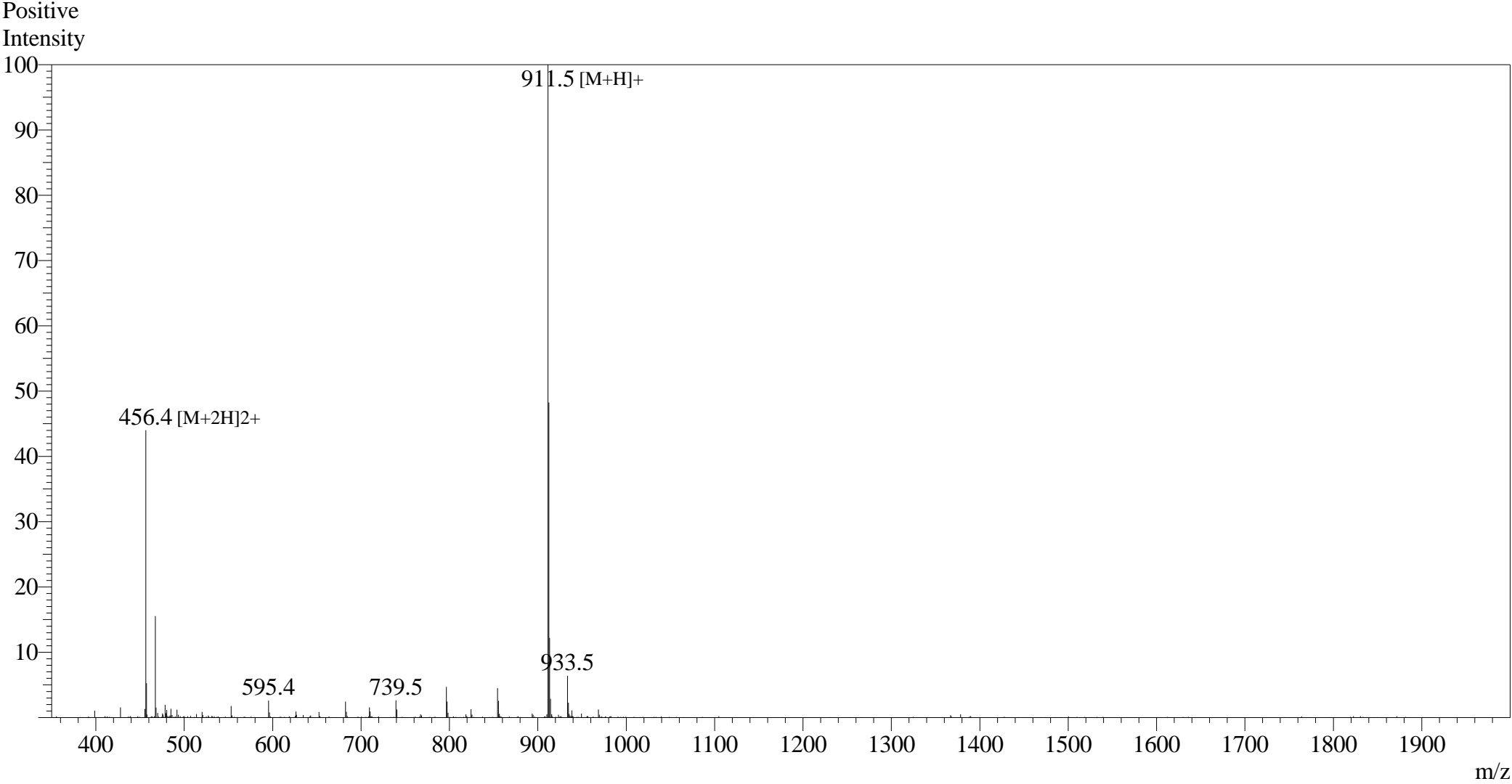


Mass Spectrum



Sample Information
Month-Day Processed : 04/30/23
Time Processed : 19:59:45
Injection Volume : 0.3
Sample Name : DK
Sample ID : C982M029G0-1
Theoretical MW : 910.93
Observed MW : 910.5

Interface :ESI
Nebulizing Gas Flow :1.5L/min
CDL Temp :250
Block Temp :200

Equipment : ZJ21010035
Interface Bias : +4.5 kV
Drying Gas Flow :5 L/min
T.Flow :0.2 ml/min
B.conc :50% H2O/50% MeOH