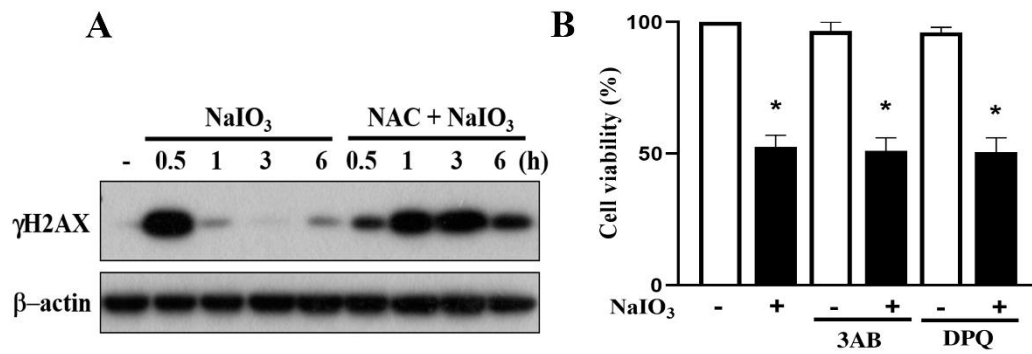
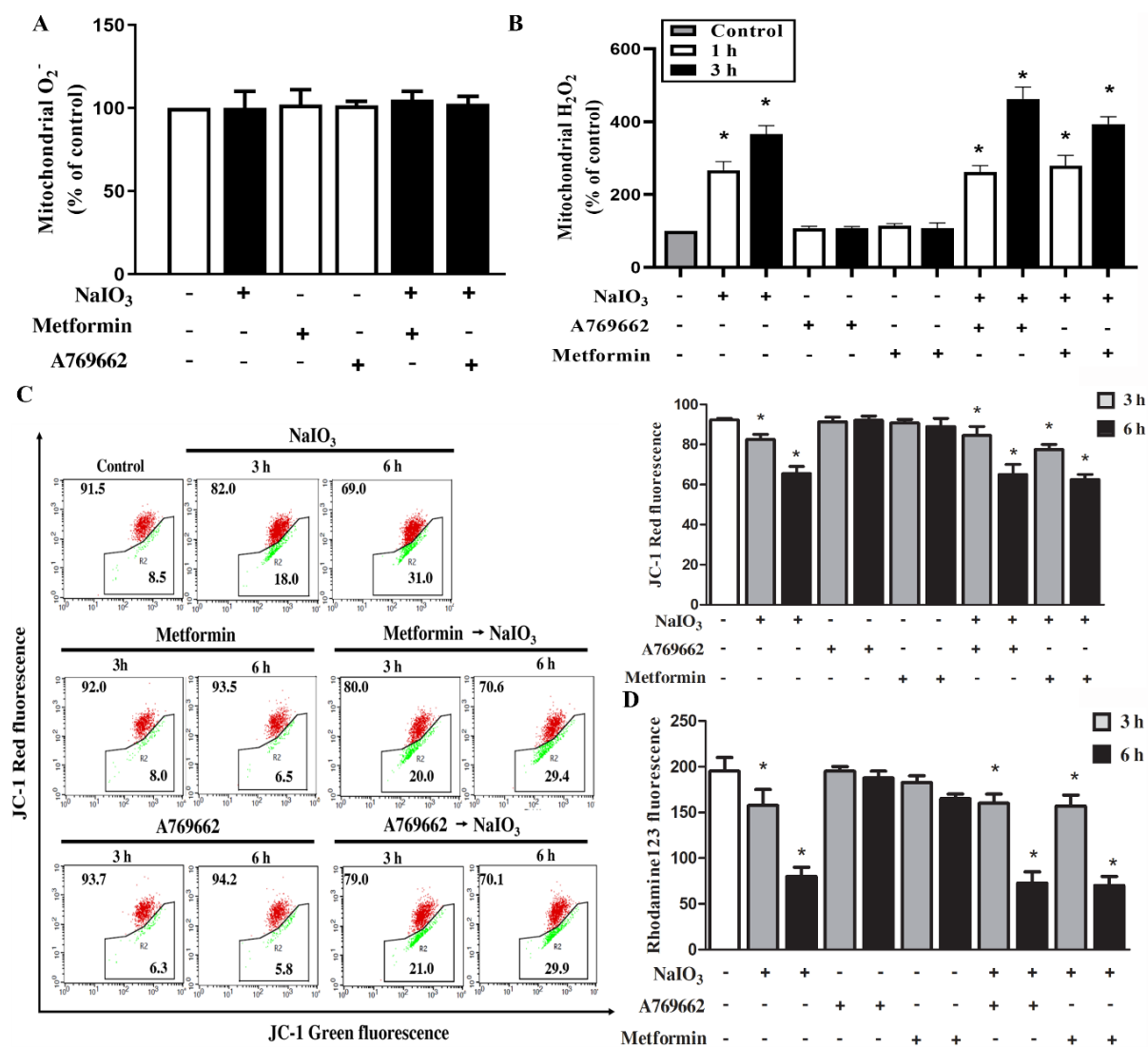


Supplementary figures:



Supplementary Figure S1. NAC enhances DNA damage in NaIO₃ treated RPE cells. **(A)** Cells were pretreated with NAC (10 mM) followed by NaIO₃ stimulation at indicated time points. γH2AX protein was determined by immunoblotting. **(B)** Cells were pretreated with 3AB (50 μM) or DPQ (25 μM) for 20 min followed by NaIO₃ (30 mM) for 18 h. Cell viability was determined by Annexin V/PI staining using flow cytometry. Data were mean ± SEM from three independent experiments *p < 0.05, indicating the cytotoxic effects of NaIO₃.



Supplementary Figure S2. A769662 and metformin do not affect NaIO₃-induced mitochondrial H₂O₂ production nor decreased mitochondrial membrane potential. Cells were pretreated with metformin (6 mM) or A769662 (30 μ M) 20 min prior to NaIO₃ (30 mM) stimulation for the indicated times. Mitochondrial O₂⁻ (A) and mitochondrial H₂O₂ (B) were determined by mitoSOX and mitoPY1, respectively. Mitochondrial membrane potential was determined by JC-1 (C) and rhodamine123 (D), respectively. Data were mean \pm SEM from three independent experiments * p < 0.05, indicating the significant effects of NaIO₃ to induce mitochondrial H₂O₂ production and mitochondrial membrane potential loss.