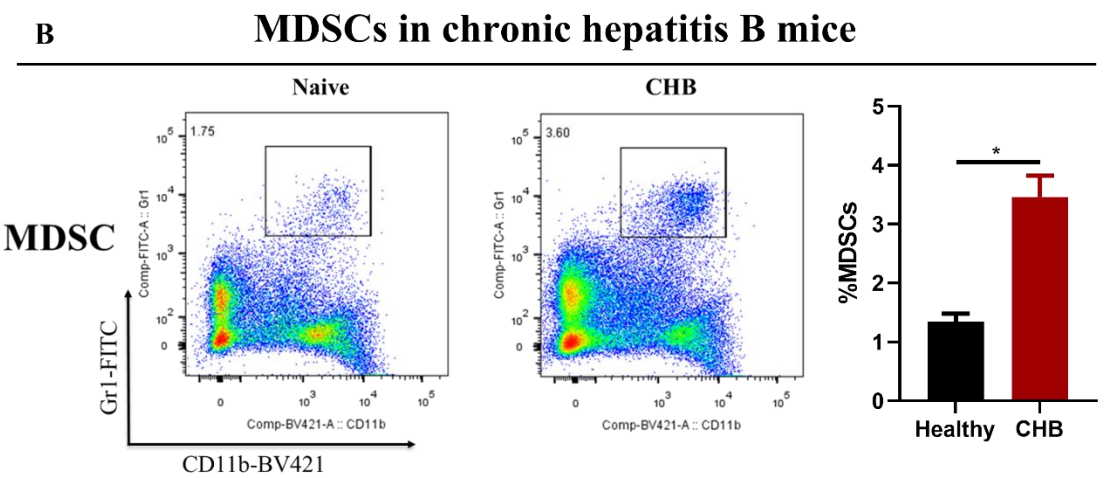
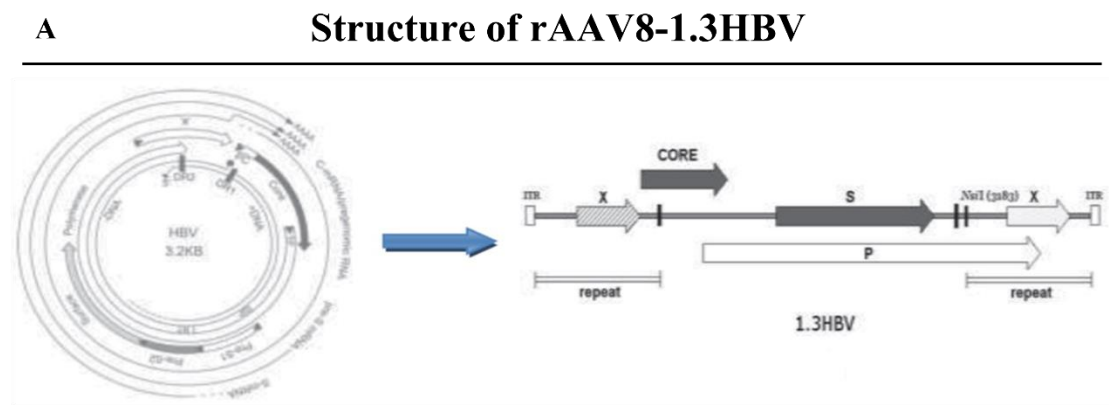
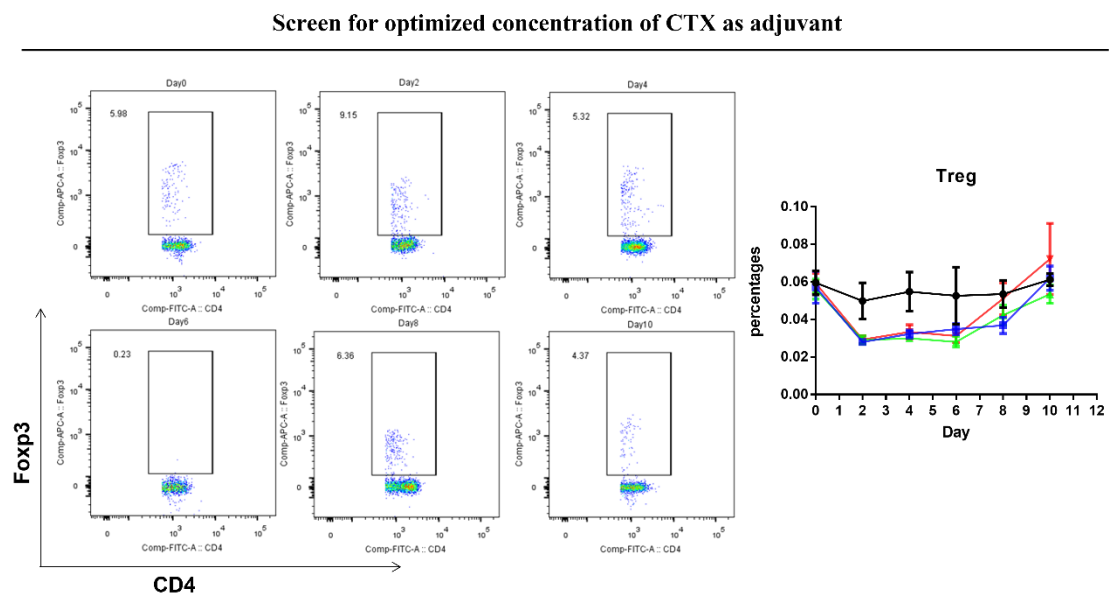


Supplementary materials



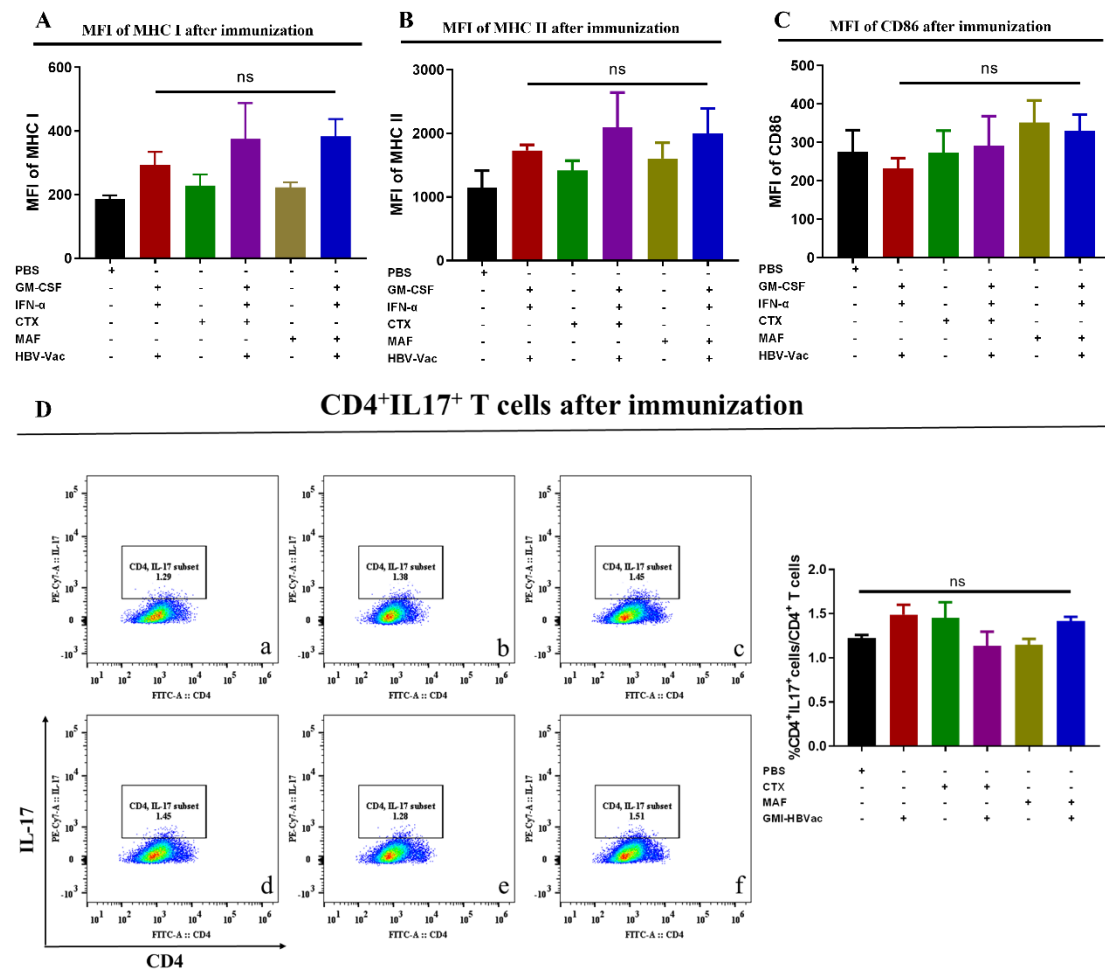
Supplementary 1: structure of rAAV8-1.3HBV(A) and increased MDSCs in rAAV8-1.3HBV infected mice(B).



Supplementary 2: Screen for an optimized concentration of CTX as adjuvant.

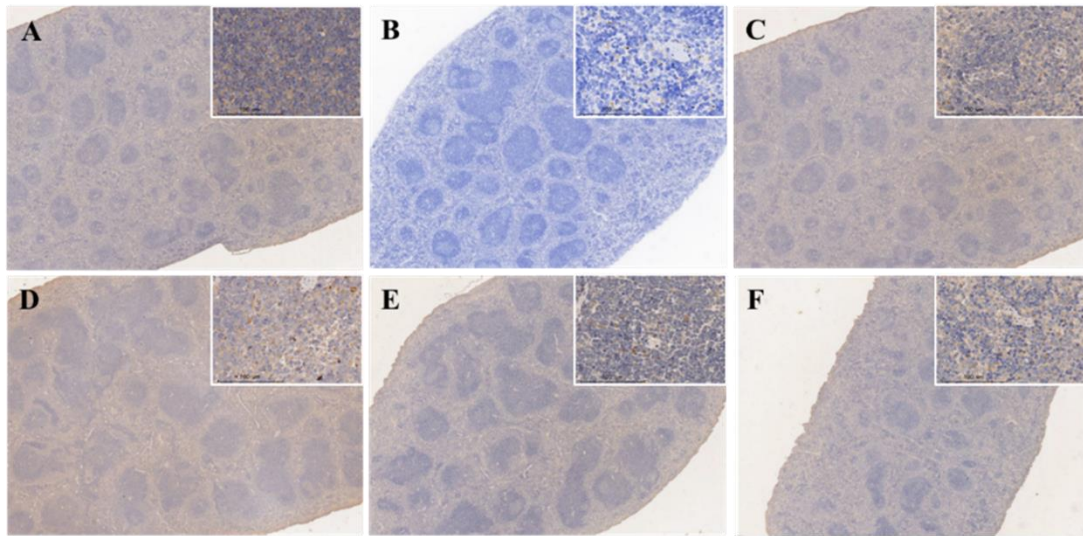
Footpad(mm)	PBS			GM-CSF+IFN- α +rHBVvac			CTX			CTX+GM-CSF+IFN α +rHBVvac			MAF			MAF+GM-CSF+IFN α +rHBVvac		
24h	0.10	0.04	0.02	0.33	0.32	0.24	0.12	0.16	0.12	0.31	0.34	0.40	0.28	0.38	0.21	0.44	0.48	0.46
48h	0.08	0.11	0.09	0.23	0.19	0.16	0.13	0.14	0.09	0.22	0.23	0.21	0.18	0.26	0.22	0.34	0.38	0.36
72h	0.05	0.08	0.06	0.12	0.08	0.06	0.14	0.13	0.11	0.12	0.14	0.11	0.13	0.20	0.15	0.30	0.27	0.33

Supplementary 3: Footpad of mice after immunization.

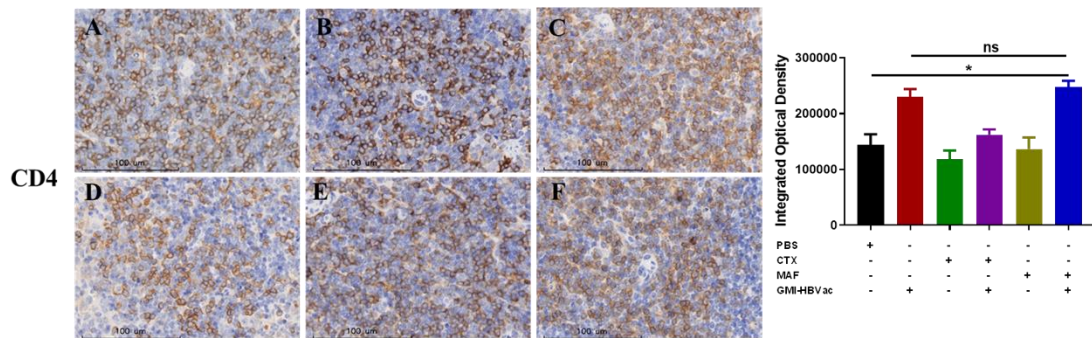


Supplementary 4: costimulatory molecule of DC(A, B, C) and CD4⁺IL17⁺ cells(D) in peripheral blood after immunization. (a: PBS, b: GMI-HBVac, c: CTX, d: CTX+GMI-HBVac, e: MAF, f: MAF+GMI-HBVac)

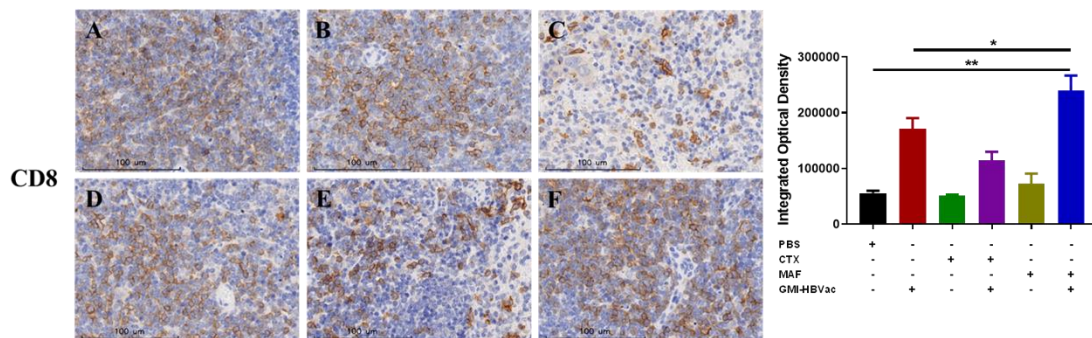
Spleen after immunization



CD4 immunohistochemistry stains in spleen



CD8 immunohistochemistry stains in spleen



Supplementary 5: Immunohistochemistry stains of CD4 and CD8 in spleen after immunization. (a: PBS, b: GMI-HBVac, c: CTX, d: CTX+GMI-HBVac, e: MAF, f: MAF+GMI-HBVac)