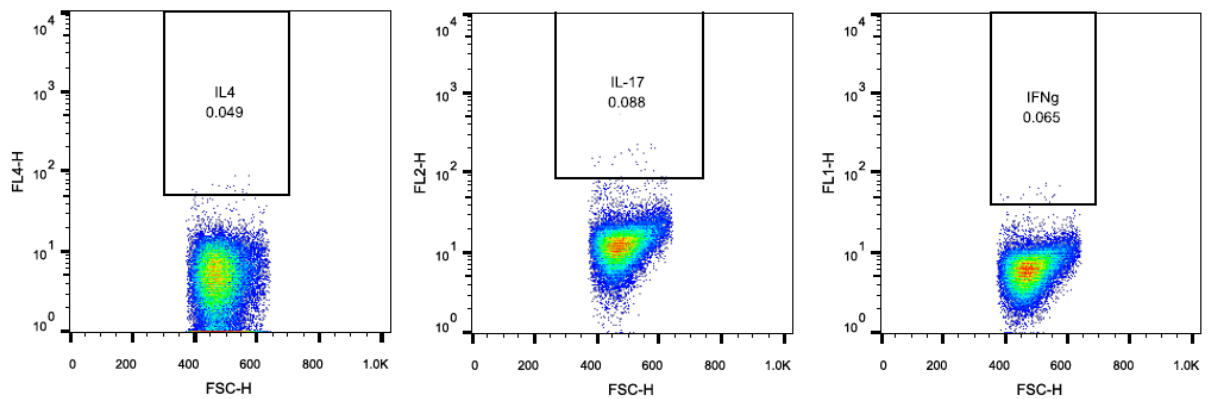
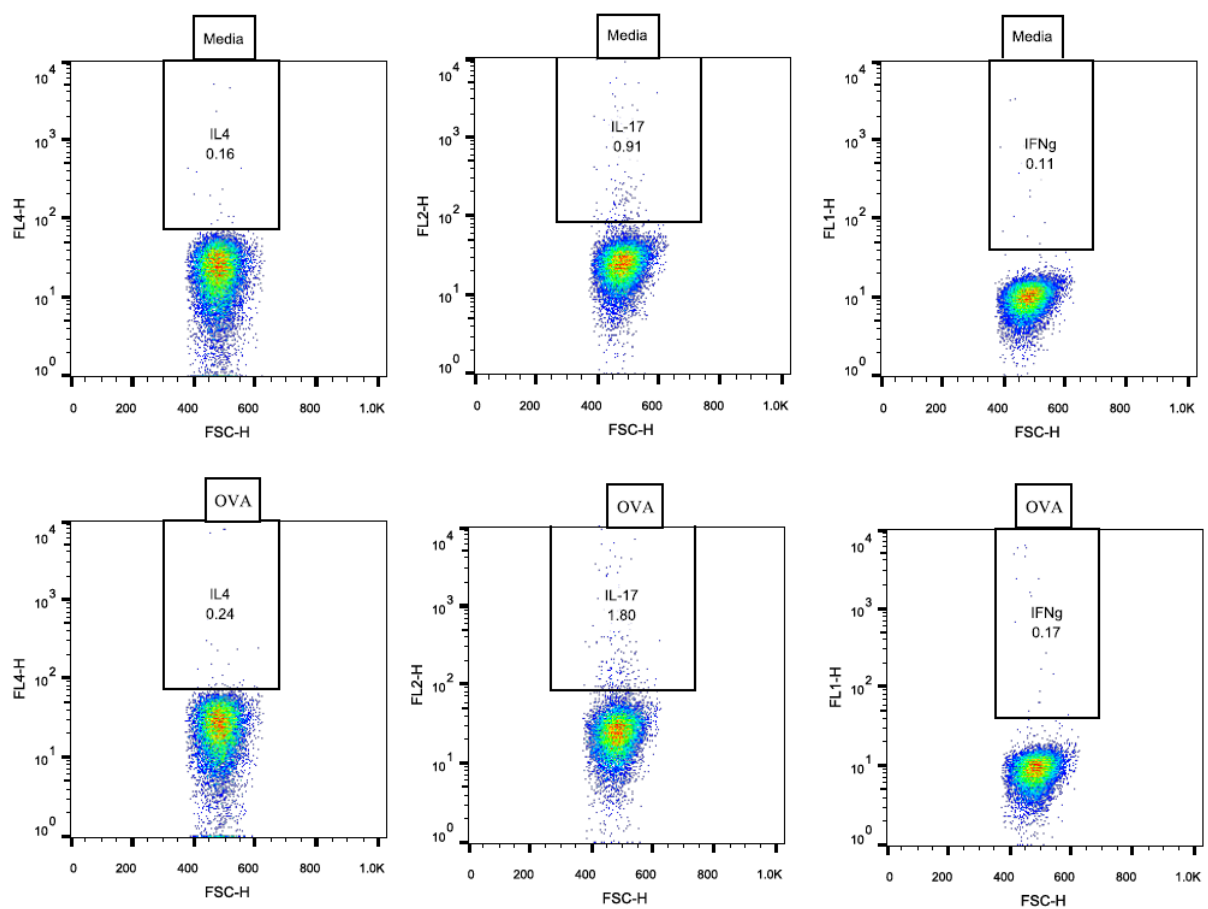


Supplementary Figures:

Supplementary Figure S1:



Supplementary Figure 1: Representative flow cytometric analysis for splenocytes alone stained for IL-4, IFN γ and IL-17. Gating was set based on a cells-alone stain for each animal to ensure auto-fluorescence was not detected, additionally, isotype control stains and FMO stains were due to specific antibody binding of the anti-IL4 (right side), anti-IL-17 (center), and anti-IFN γ (left side) antibodies. Antibodies were previously validated on mouse targets.



Supplementary Figure S2: Representative flow cytometric analysis for splenocytes stimulated with OVA or mock-stimulated and stained for IL-4, IFN γ and IL-17. Gating was set based on a cells-alone stain for each animal to ensure auto-fluorescence was not detected, additionally, isotype control stains and FMO stains were carried out to ensure positive events were due to specific antibody binding of the anti-IL4 (right side), anti-IL-17 (center), and anti-IFN γ (left side) antibodies. Antibodies were previously validated on mouse targets.