

## Supplementary Material

**Supplementary Table S1.** Interactions of Prognostic predictors for overall survival among patients with esophageal cancer (n=352).

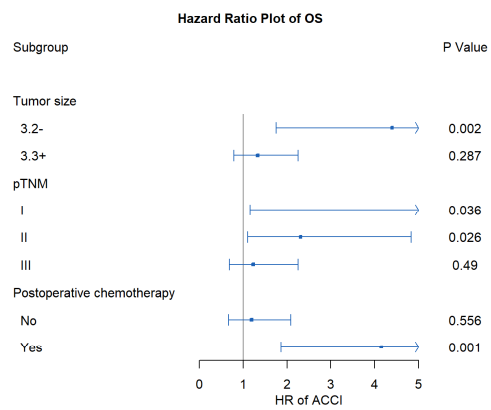
Model	B	SE	Wald	df	P	HR	95.0% CI	
							Lower	Upper
ACCI*Tumor size <sup>#</sup>	-1.153	0.516	4.999	1	0.025	0.32	0.12	0.87
ACCI group*pTNM <sup>#</sup>			5.078	2	0.079			
ACCI group*pTNM(1) <sup>#</sup>	-1.261	0.996	1.603	1	0.205	0.28	0.04	2.00
ACCI group*pTNM(2) <sup>#</sup>	-1.948	0.978	3.969	1	0.046	0.14	0.02	0.97
ACCI group*Postoperative chemotherapy <sup>#</sup>	1.128	0.477	5.599	1	0.018	3.09	1.21	7.87

<sup>#</sup>Adjusted to gender, ACCI, tumor size, pTNM, degree of differentiation, postoperative chemotherapy, and postoperative complications.

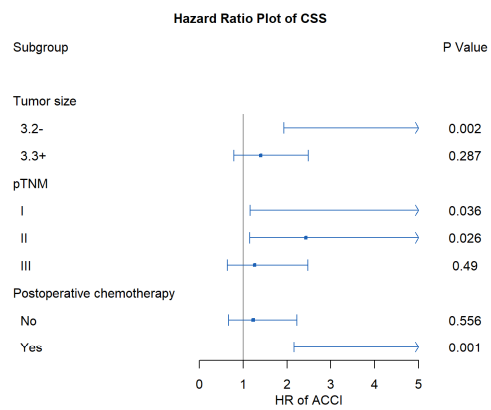
**Supplementary Table S2.** Interactions of Prognostic predictors for cancer-specific survival among patients with esophageal cancer (n=343).

Model	B	SE	Wald	df	P	HR	95.0% CI	
							Lower	Upper
ACCI*Tumor size <sup>#</sup>	-1.099	0.545	4.065	1	0.044	0.33	0.11	0.97
ACCI group*pTNM <sup>#</sup>			4.804	2	0.091			
ACCI group*pTNM(1) <sup>#</sup>	-1.282	0.999	1.646	1	0.200	0.28	0.04	1.97
ACCI group*pTNM(2) <sup>#</sup>	-1.962	0.987	3.951	1	0.047	0.14	0.02	0.97
ACCI group*Postoperative chemotherapy <sup>#</sup>	1.154	0.498	5.366	1	0.021	3.17	1.19	8.42

<sup>#</sup>Adjusted to gender, ACCI, tumor size, pTNM, degree of differentiation, postoperative chemotherapy, and postoperative complications



**Supplementary Figure S1.** Subgroup analysis of ACCI hazard ratio plot of overall survival.



**Supplementary Figure S2.** Subgroup analysis of ACCI hazard ratio plot of cancer-specific survival.