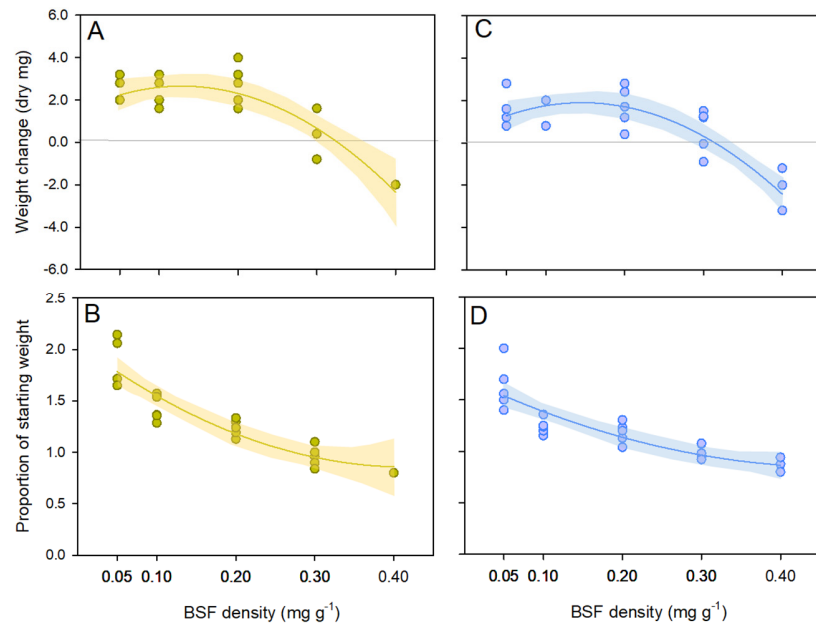
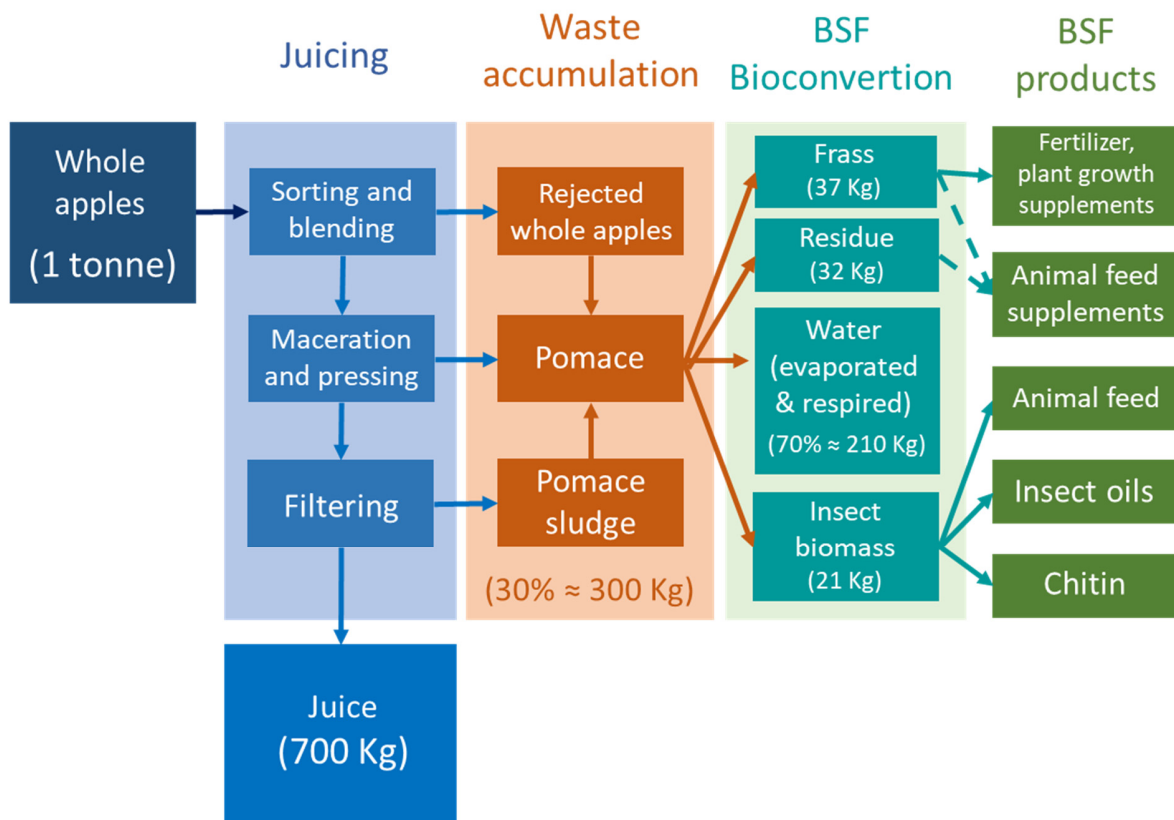


## Supplementary Information



**Figure S1** Absolute weight change of BSF larvae reared on apple pomace (**A** = Granny Smith, **B** = Golden Delicious) at five starting densities. The proportional changes in BSF weight on Golden delicious and Granny Smith over the 6-day experiment are indicated in **C** and **D**, respectively. Best-fit curves are indicated as Weight change =  $1.5358 + 17.4760 - 67.9294x^2$  (Golden Delicious, dashed curve) and Weight change =  $0.4605 + 19.6226 - 67.0641x^2$  (Granny Smith, solid curve). Proportional weight change =  $2.0522 - 5.7179 + 6.8363x^2$  (Golden Delicious, dashed curve); Proportional weight change =  $1.7140 - 3.6467 + 3.8197x^2$  (Granny Smith, solid curve). (See also Figure 1)



**Figure S2.** Schematic of the juicing process (blue) and pomace production (orange) with outcomes of BSF bioconversion (light blue) and final BSF products (green). Approximate wet weights of juice and pomace and dry weights of each conversion product (i.e., frass, residue and insect biomass) are presented based on the optimal bioconversion rates achieved in the present study.