

Supplementary Material

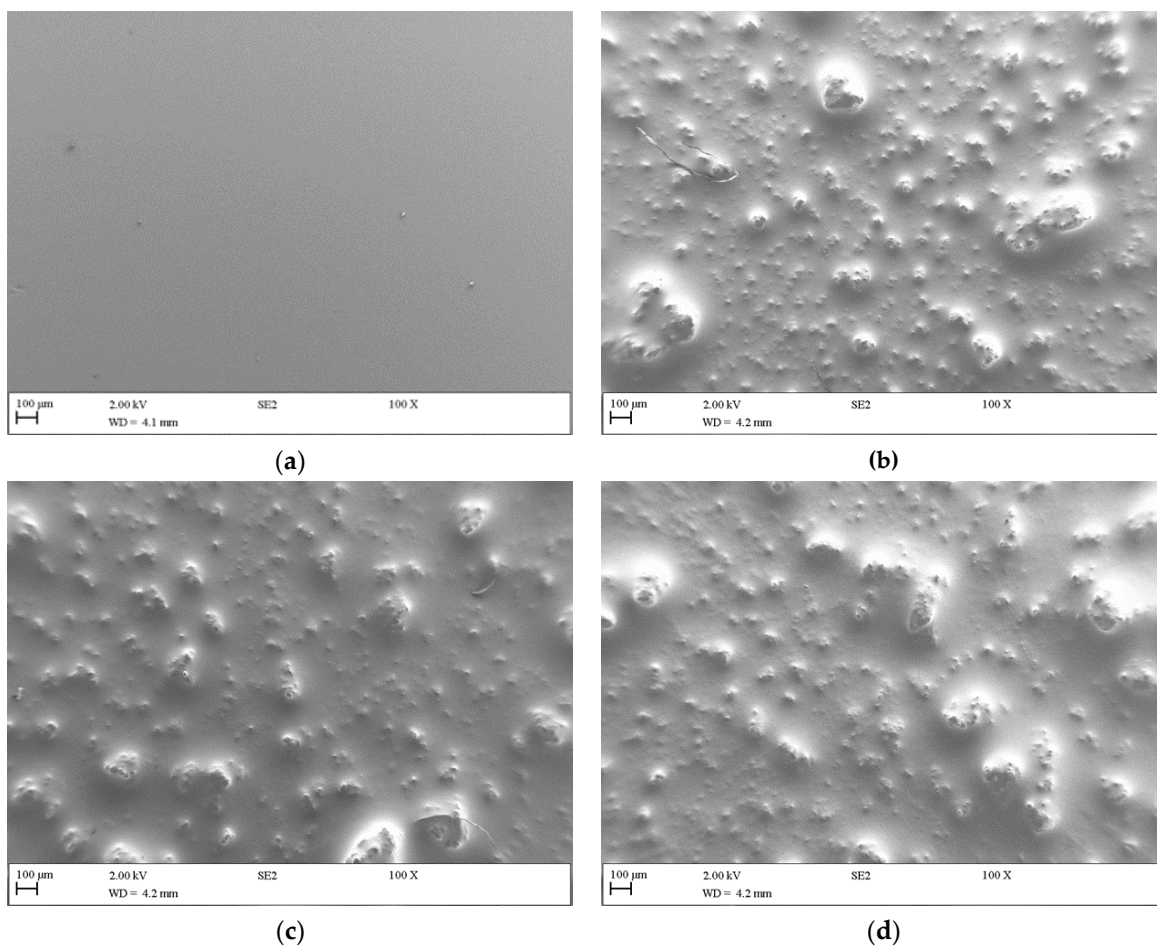


Figure S1. SEM images of (a) PDMS, (b) p-MWCNT/PDMS, (c) f-MWCNT_N/PDMS, and (d) f-MWCNT_N600/PDMS composites (magnification of 100×).

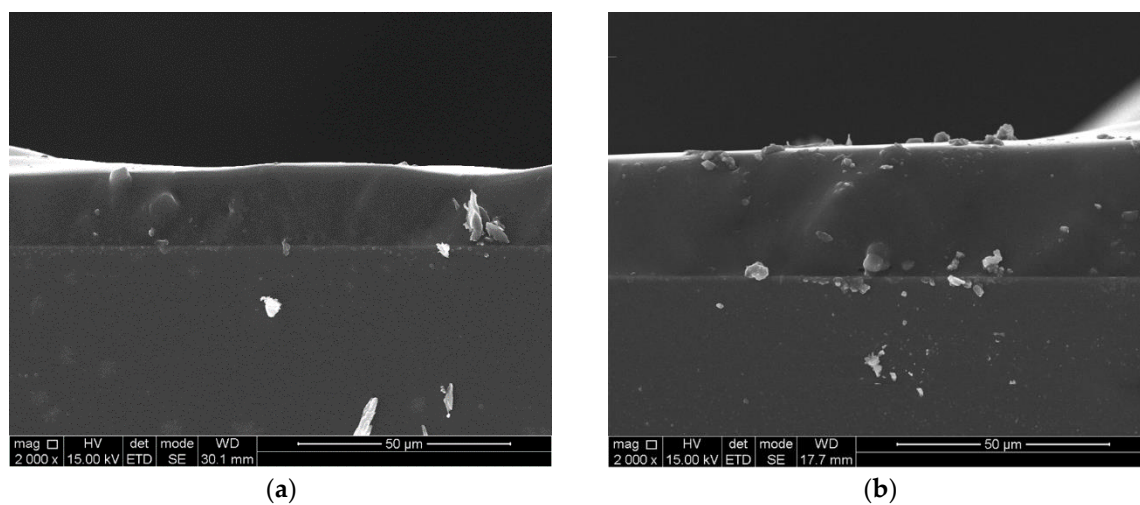


Figure S2. SEM images of (a) p-MWCNT/PDMS and (b) f-MWCNT_N/PDMS cross-sections (magnification of 2000 \times).

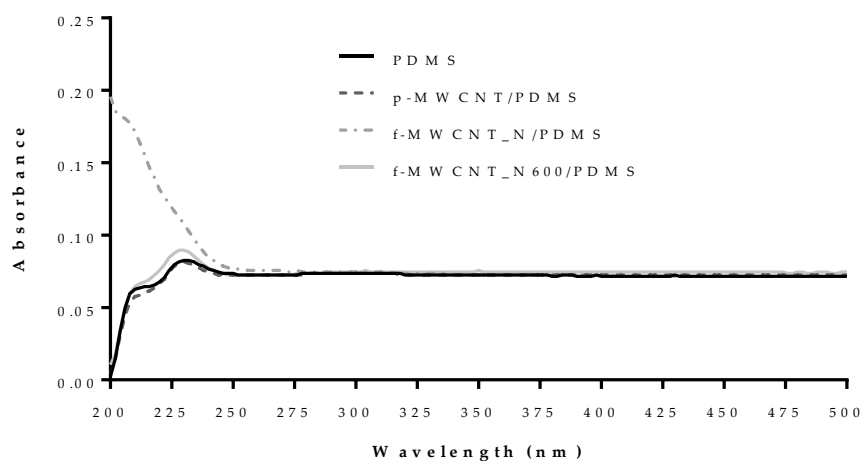


Figure S3. UV-Vis spectra of water after contact with PDMS, p-MWCNT/PDMS, f-MWCNT_N/PDMS, and f-MWCNT_N600/PDMS.

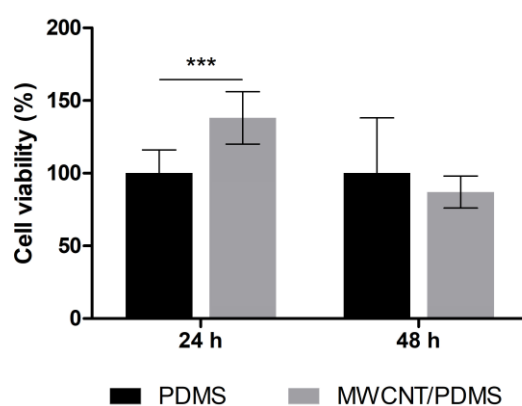


Figure S4. Effect of MWCNT/PDMS composites on the viability of human kidney proximal tubule (HK-2) cells after 24 and 48 h of exposure. Significant differences between the viability of HK-2 cells exposed to PDMS and MWCNT/PDMS composites are denoted as *** ($p < 0.001$).