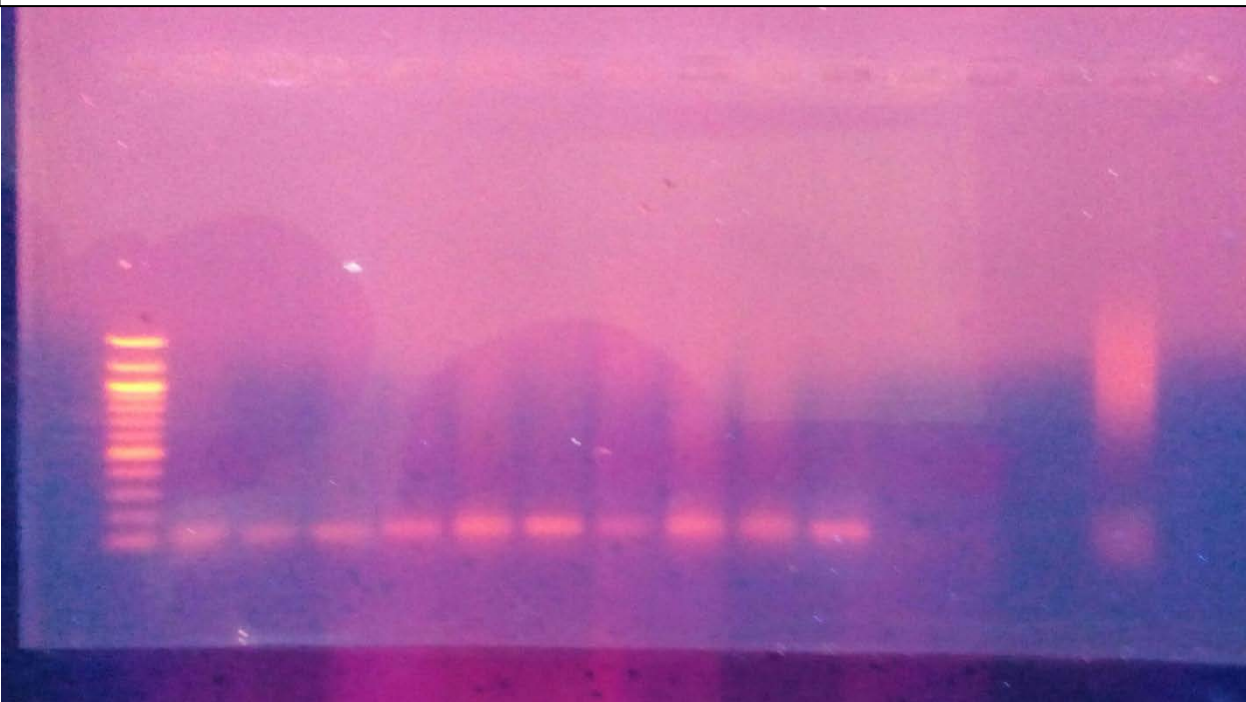


--	M	1	4	6	11	15	23	67	83	++	++	--	--	E	89	E
----	---	---	---	---	----	----	----	----	----	----	----	----	----	---	----	---



Note: -- = Negative.Control (No DNA). ++ =Positive control (Salmonella Typhimurium ATCC14028).
E=Empty. 1, 4, 6, 11, 15, 23, 67, 83, 89 are biochemical confirmed Salmonella isolates. Expected bp= 119bp

Figure S 2: Gel image of optimized *invA* gene PCR used for identification of *Salmonella* spp isolated from the Nigeria broiler production value chain