

Atomic Layer Deposition of Chlorine Containing Titanium–Zinc Oxide Nanofilms Using the Supercycle Approach

Denis Nazarov ^{1,2,*}, Lada Kozlova ¹, Aida Rudakova ¹, Elena Zemtsova ¹, Natalia Yudintceva ³, Elizaveta Ovcharenko ³, Alexandra Koroleva ¹, Igor Kasatkin ¹, Ludmila Kraeva ⁴, Elizaveta Rogacheva ⁴ and Maxim Maximov ²

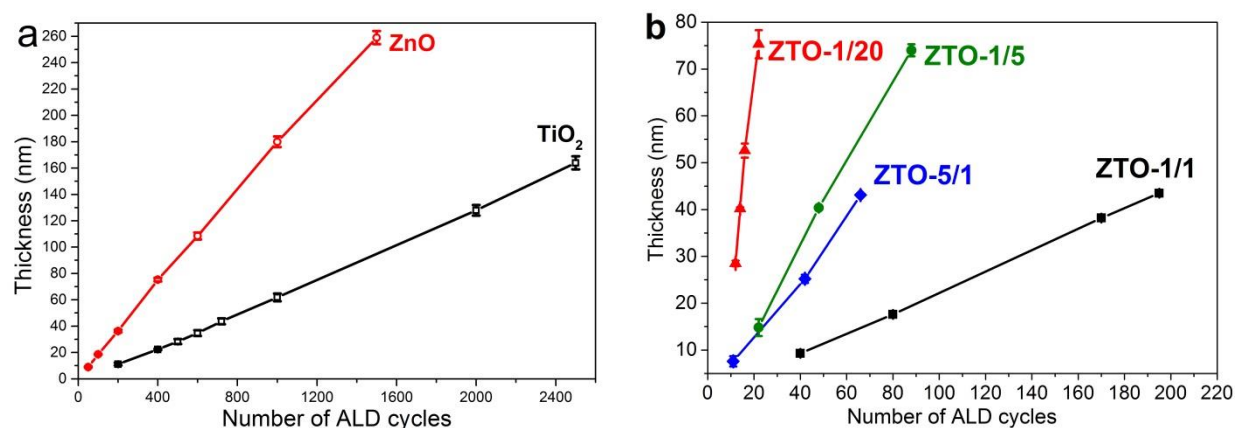


Figure S1. Thickness of ZnO and TiO₂ (a) and ZTO (b) films as a function of the number of ALD cycles.

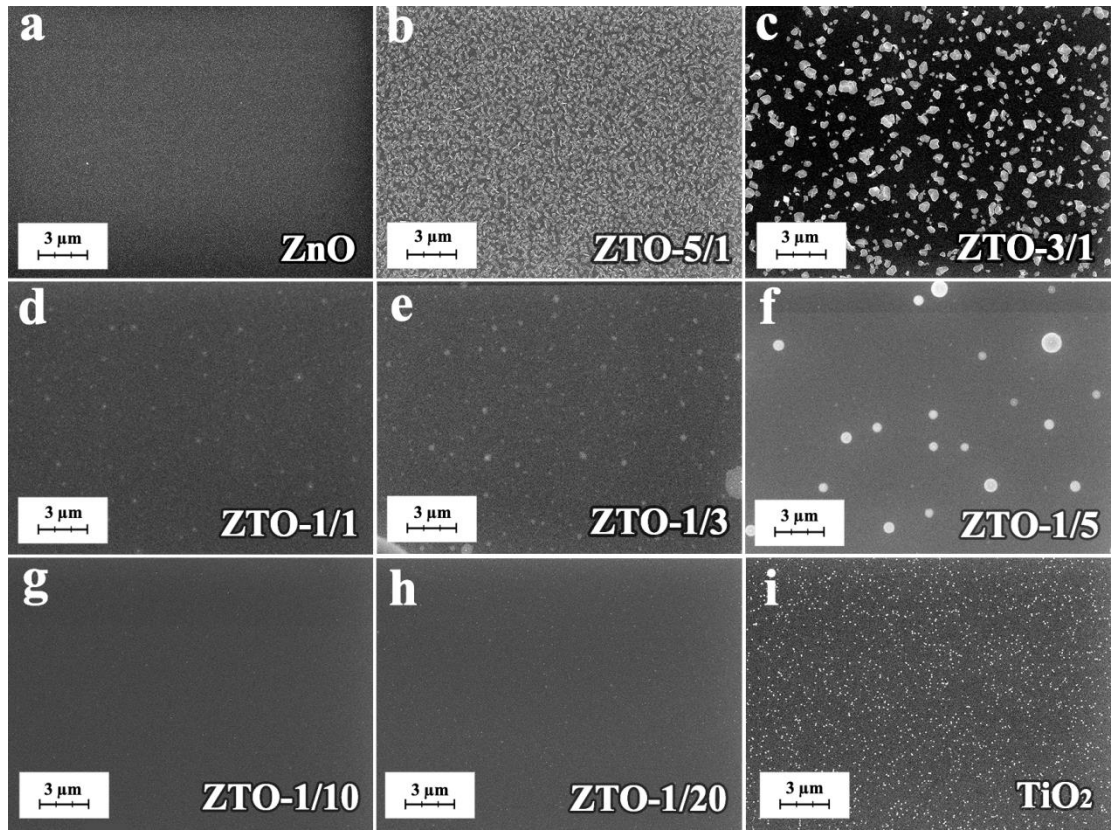


Figure S2. Plan-view SEM images of ZnO, TiO₂, and ZTO samples at magnification of 10,000. (a) ZnO, (b) ZTO-5/1 (c) ZTO-3/1, (d) ZTO-1/1 (e) ZTO-1/3 (f) ZTO-1/5 (g) ZTO-1/10 (h) ZTO-1/20 (i) TiO₂.

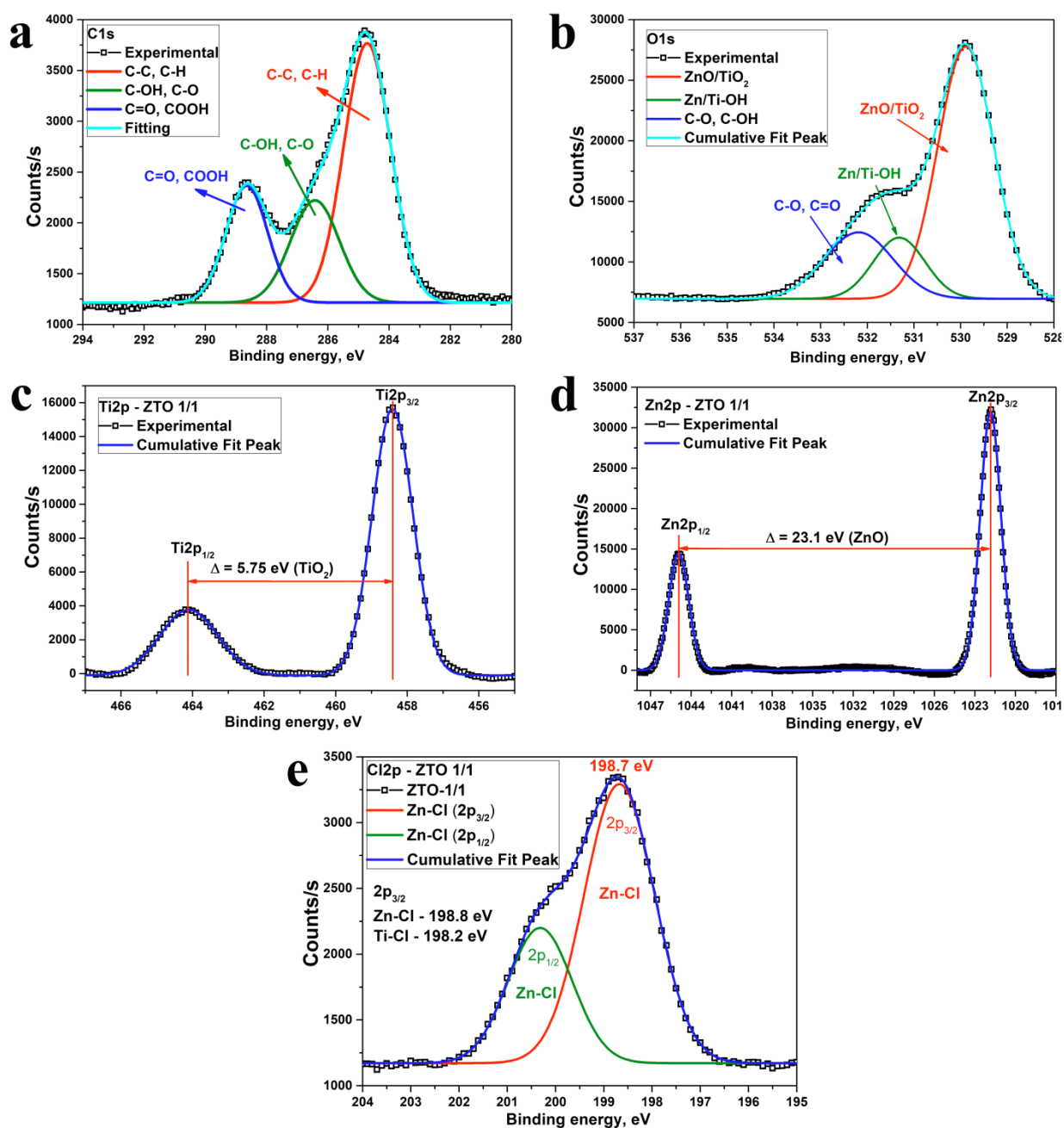


Figure S3. XPS spectra of ZTO-1/1 (a) C1s, (b) O1s, (c) Ti2p, (d) Zn2p, and (e) Cl2p.