

Supplementary figures and table:

Table S1: Analysis to evaluate if there were significant differences in Y-BLBs means when strains of *H. pylori* were incubated with *Candida* strains in 48 h co-cultures incubated at 40 °C.

<i>H. pylori</i> strains	<i>Candida</i> strains				Mean	Tukey's test	
	ATCC 90028	ATCC 90030	LEO-37	VT-3			
G-27	9.6667	9.6667	18.3333	11.6667	12.3333	ATCC 90028	A
H707	15.3333	14.6667	20.3333	15.6667	16.5000	ATCC 90030	A
J99	25.3333	23.0000	24.6667	24.6667	24.4167	LEO-37	A
SS-1	12.3333	15.6667	15.3333	13.6667	14.2500	VT-3	A
Mean	15.6667	15.7500	19.6667	16.4167			

ANOVA: Single Factor

Means sharing the same letter were not significantly different ($p > 0.05$) according to the Tukey test.

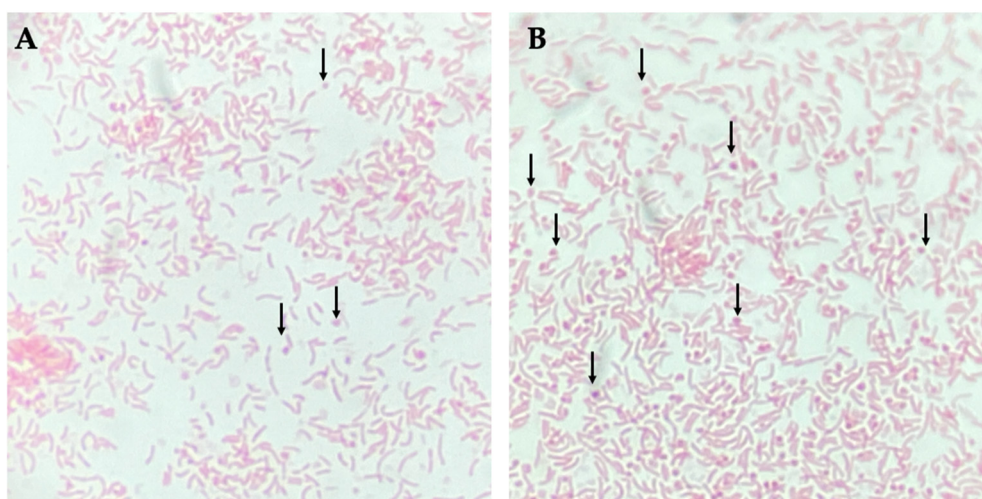


Figure S1: Gram staining of *H. pylori* J99 cultures incubated at A) 37 °C or B) 40 °C showing the increased number of coccoid cells when incubated at 40 °C.

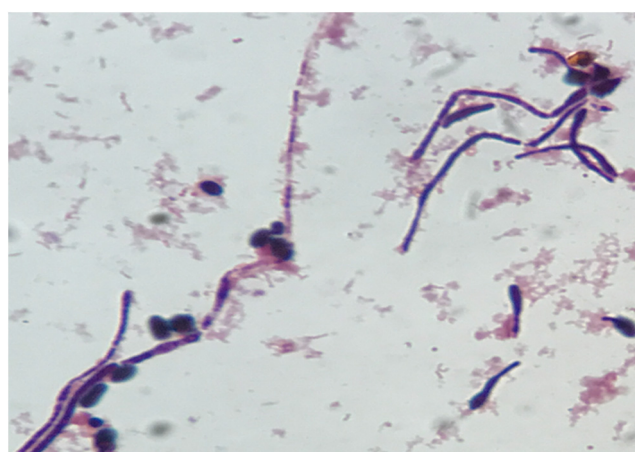


Figure S2: Gram-staining of *H. pylori* H707-*C. albicans* VT-3 co-culture showing the co-aggregation of both microorganisms. Observe the preference of *H. pylori* cells for filamentous structures (pseudohyphae and hyphae).