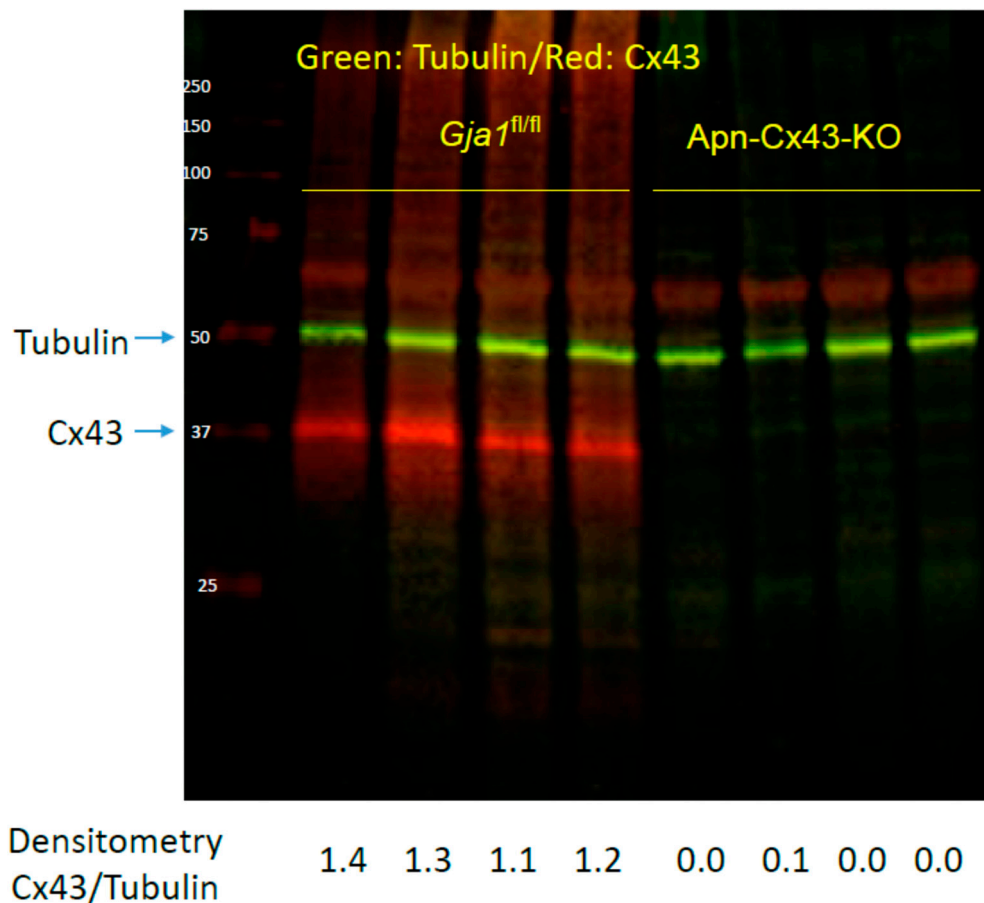


**Figure S1.** The original blot of Fig. 2C. The Odyssey® One-Color Protein Molecular Weight Marker (Li-Cor, P/N: 928-40000, Lincoln, NE) is shown in red, the molecular weights are in kilodaltons. Only *Gja1<sup>fl/fl</sup>* groups on HFD and Chow (yellow rectangle) were presented in the Fig. 2C. Densitometry of Cx43 (green channel) normalized by Actin (red channel) is shown below each band.



**Figure S2.** The original blot of Fig. 3B. The Odyssey® One-Color Protein Molecular Weight Marker (Li-Cor, P/N: 928-40000, Lincoln, NE) is shown in red, the molecular weights are in kilodaltons. Densitometry of Cx43 (red channel) normalized by Tubulin (green channel) is shown below each band.