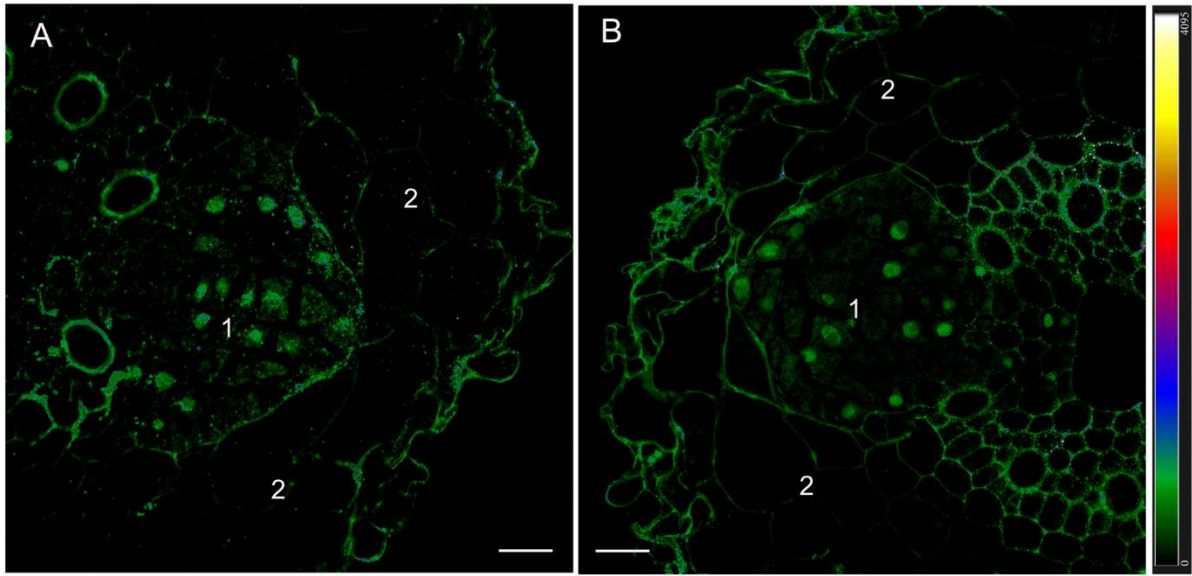


## Supplementary Materials



**Figure S1.** Immunohistochemical localization of IAA in cross sections of the roots of barley plants after their growing during one day at different illumination levels. Images were taken from 10 independent sections per treatment and figure shows representative images. Intensity of fluorescence is displayed as a color-coded heatmap. (A)—control ( $165 \mu\text{mol m}^{-2} \text{s}^{-1}$ ), (B)—reduced illumination ( $45 \mu\text{mol m}^{-2} \text{s}^{-1}$ ). Scale bar 20  $\mu\text{m}$ , 1 – primordia of lateral roots, 2 – root cortex.