

Supplementary Materials: Non-Invasive Assessment of Skin Barrier Properties: Investigating Emerging Tools for In Vitro and In Vivo Applications

Emer Duffy, Keana De Guzman, Robert Wallace, Ronan Murphy and Aoife Morrin

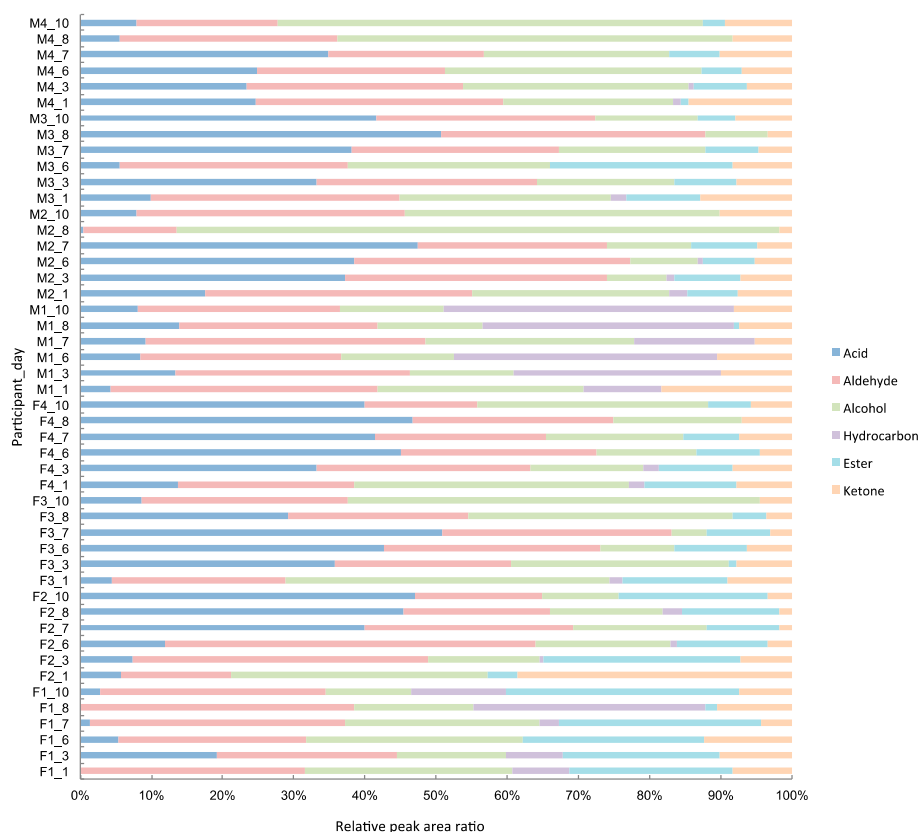


Figure S1. Distribution of compound classes in human skin volatile samples. Compounds were classified according to chemical functionality based on chromatographic peak areas as determined by HS-SPME GC-MS. (F = female, M = male)

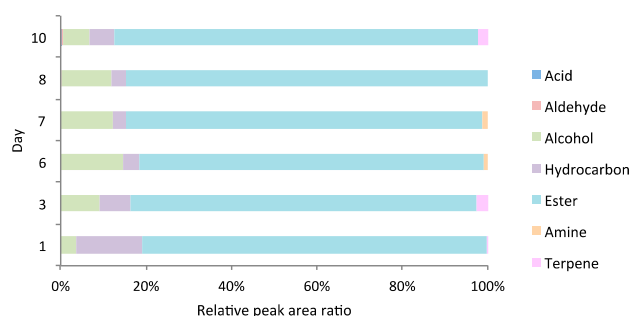


Figure S2. Distribution of compound classes in volatile samples from human skin equivalent. Compounds were classified according to chemical functionality based on chromatographic peak areas as determined by HS-SPME GC-MS.