

# Supplemental Materials: Graphene Ink Film Based Electrochemical Detector for Paracetamol Analysis

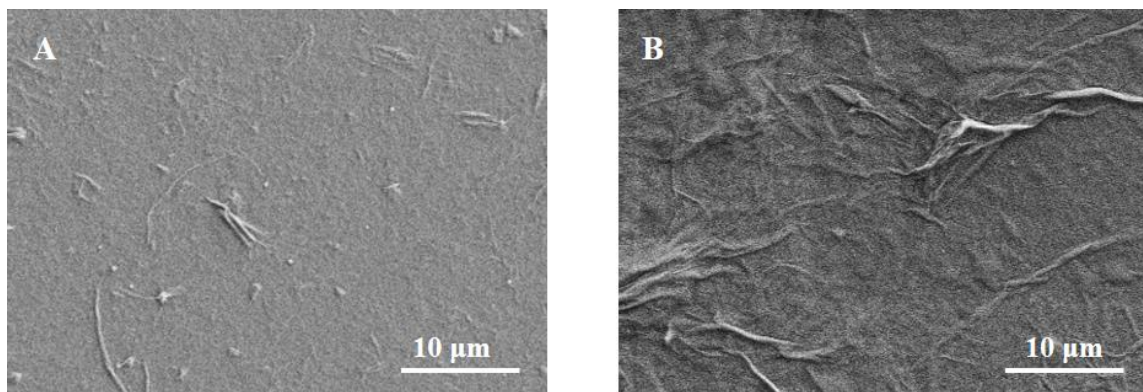
Li Fu <sup>1,\*</sup>, Kefeng Xie <sup>2,\*</sup>, Yuhong Zheng <sup>3</sup>, Luxi Zhang <sup>1</sup> and Weitao Su <sup>1</sup>

## 2. Materials and Methods



**Figure S1.** Digital photo of the electrochemical cell used in this work.

## 3. Results



**Figure S2.** SEM images of the graphene ink (A) before and (B) after 20 min electrochemical oxidation treatment.

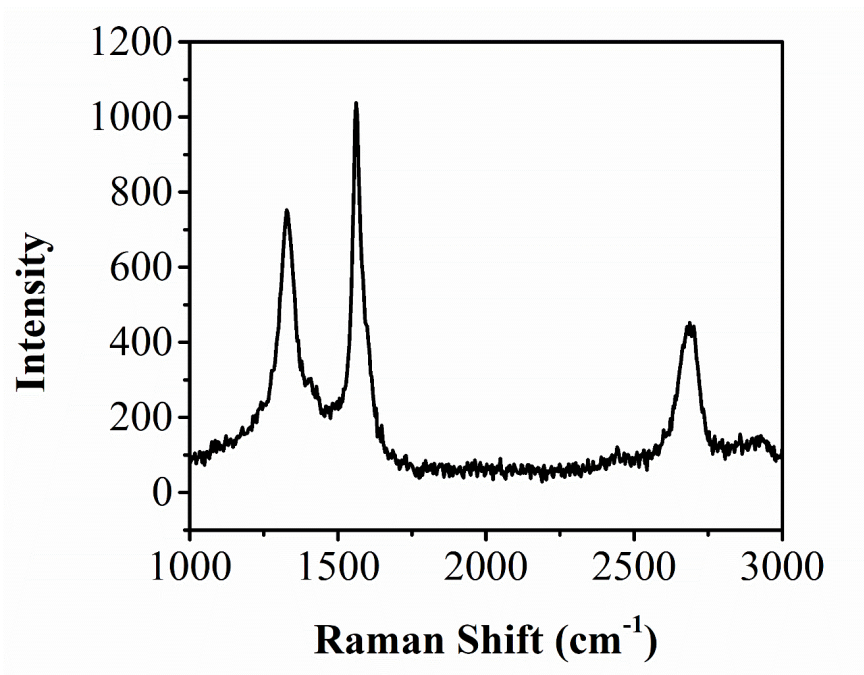


Figure S3. Raman spectrum of graphene ink.

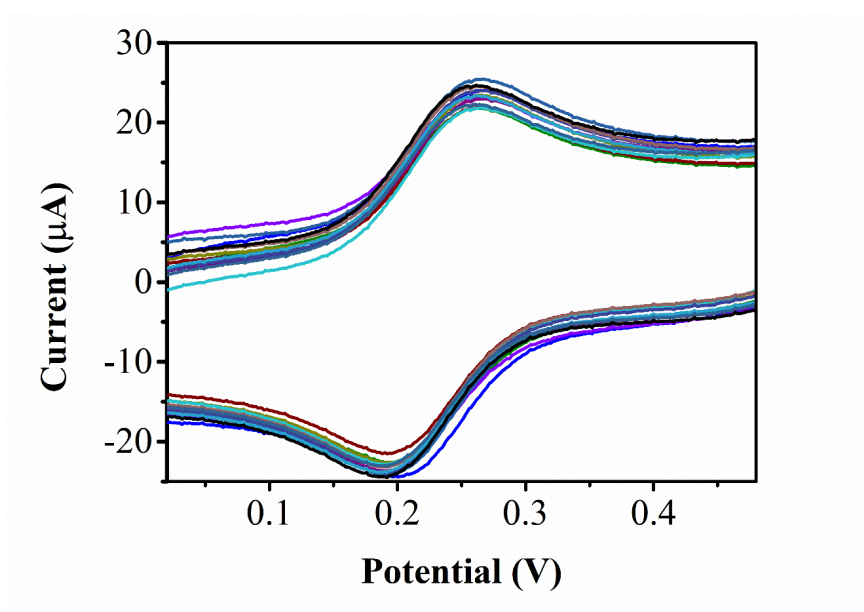
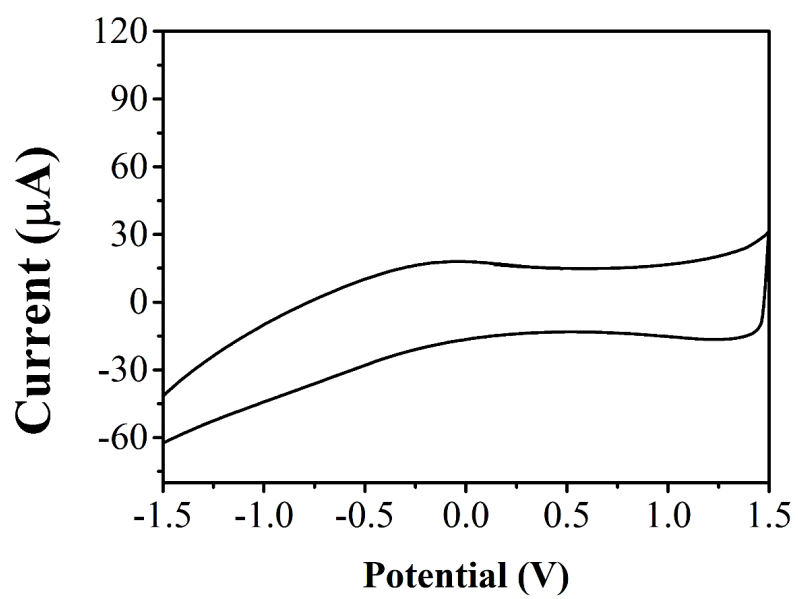


Figure S4. 15 cyclic voltammograms of 5 mM  $[\text{Fe}(\text{CN})_6]^{3-/4-}$  (in 0.1 M KCl) at GI/GCE.



**Figure S5.** Cyclic voltammograms of GI/GCE in PBS.