

## Supplementary information

**Supplementary data:** The  $^1\text{H}$ ,  $^{13}\text{C}$  NMR and LC-MS spectra of compounds **8 a-g**

### Table of Contents

Copies of  $^1\text{H}$ ,  $^{13}\text{C}$  NMR and LC-MS spectra of compounds **8 a-g** .....S1-21

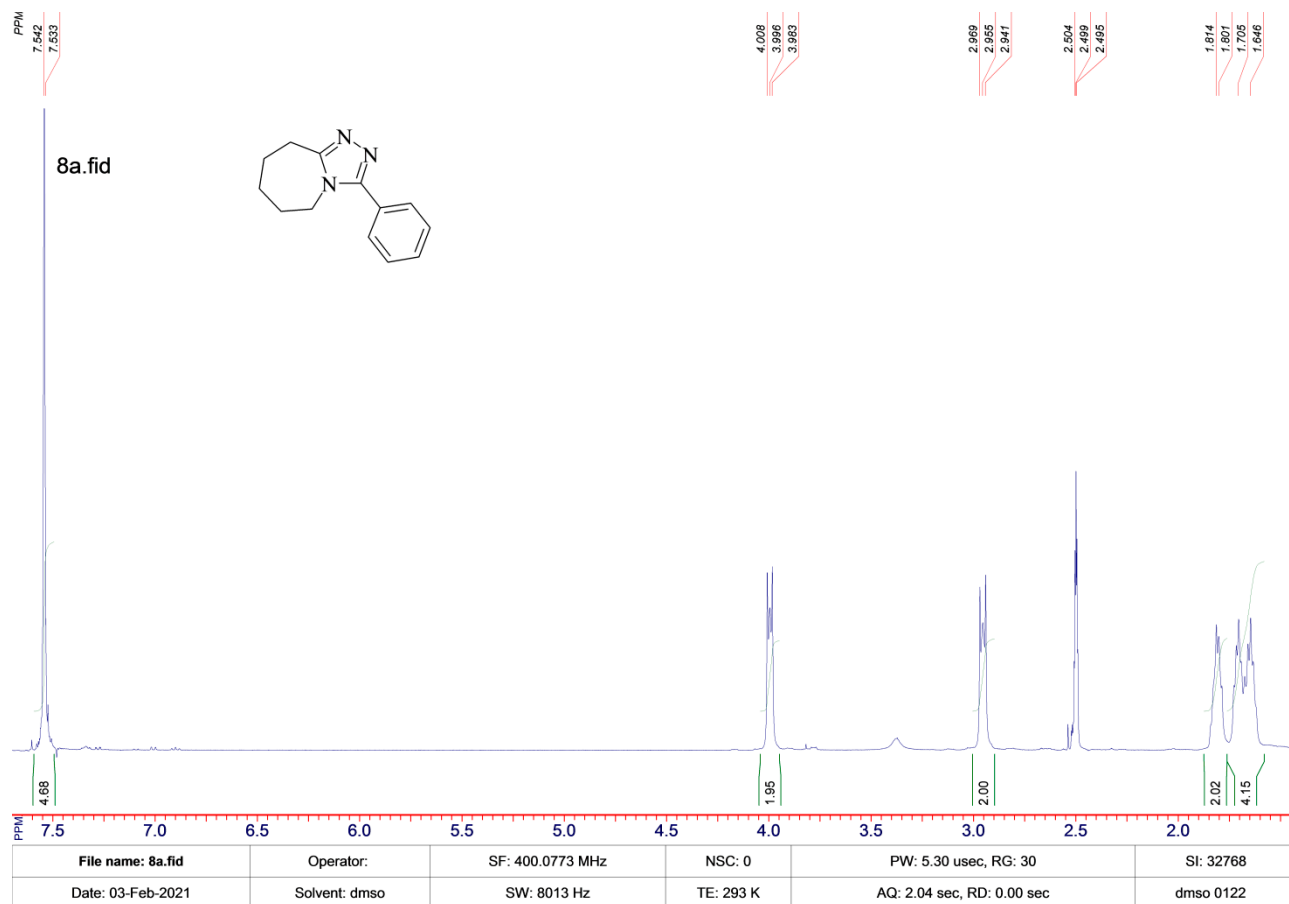


Figure S1.  $^1\text{H}$  NMR spectrum of compound **8a**

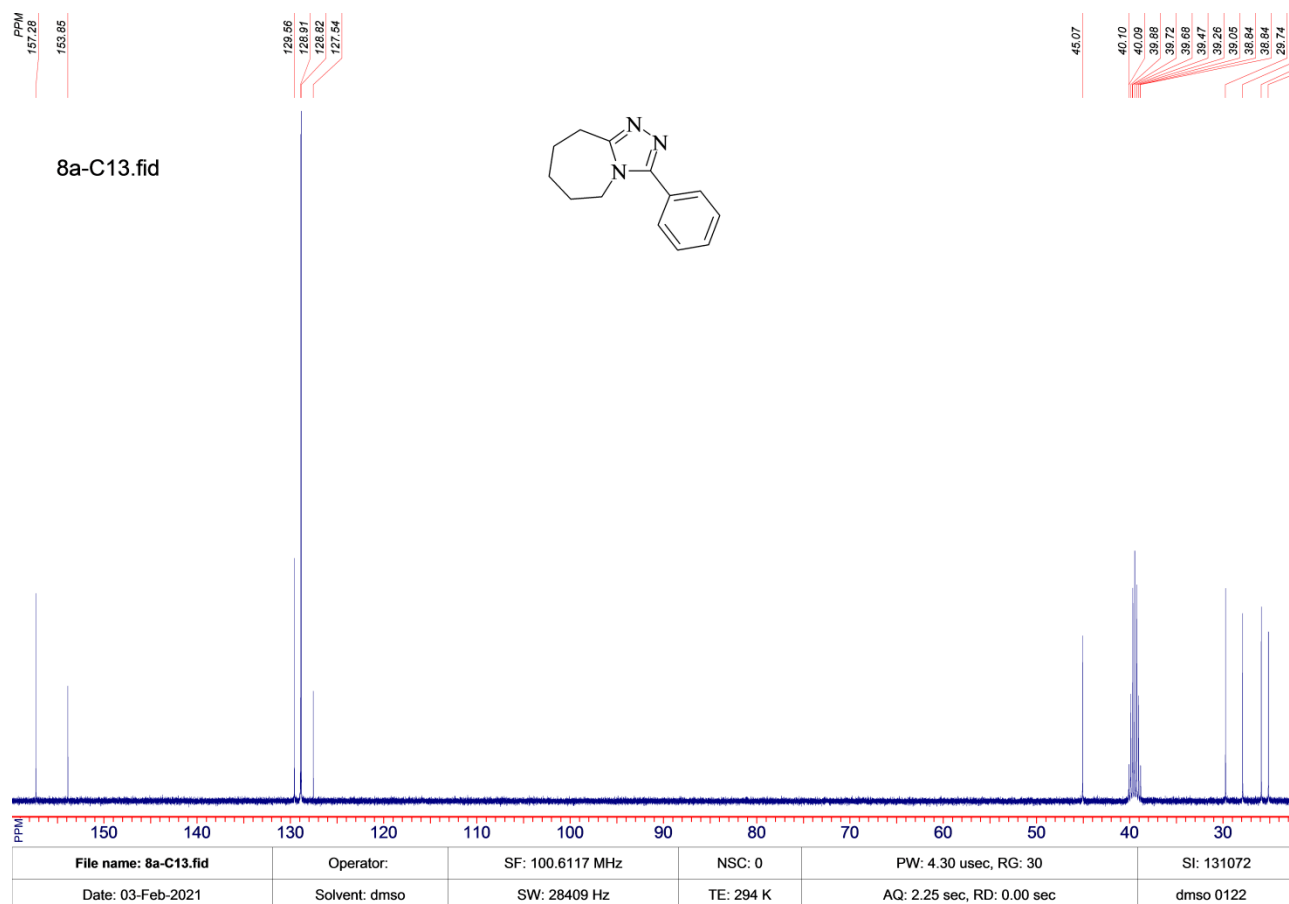
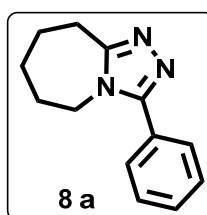
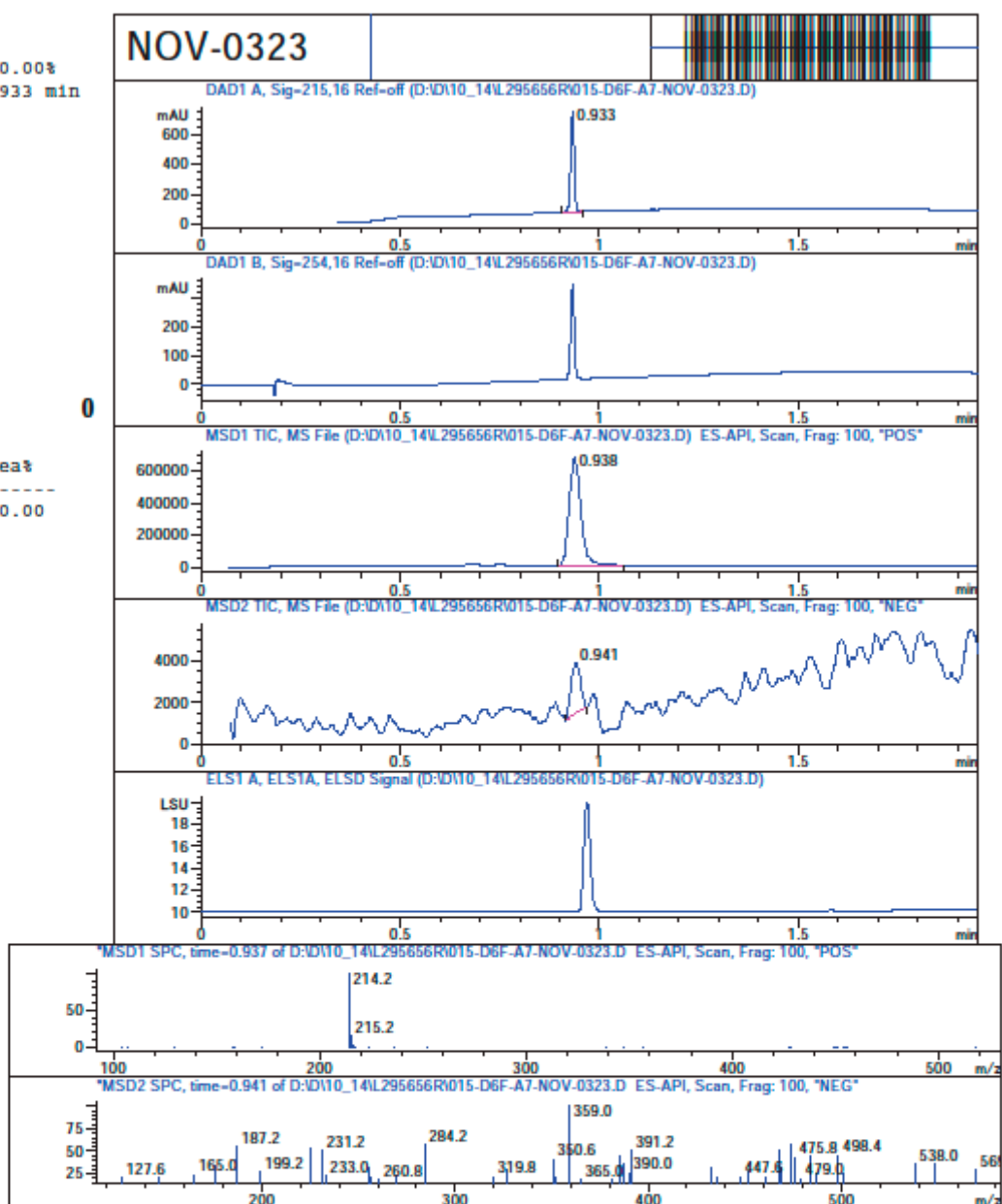


Figure S2.  $^{13}\text{C}$  NMR spectrum of compound **8a**

MaxPeak: 100.00%  
Ret\_Time: 0.933 min

Mol Wt  
Exact Mass  
# Time Area%

#	Time	Area%
1	0.933	100.00



Molecular Weight:  
213,28

Figure S3. LC-MS spectrum of compound **8a**

8b.fid

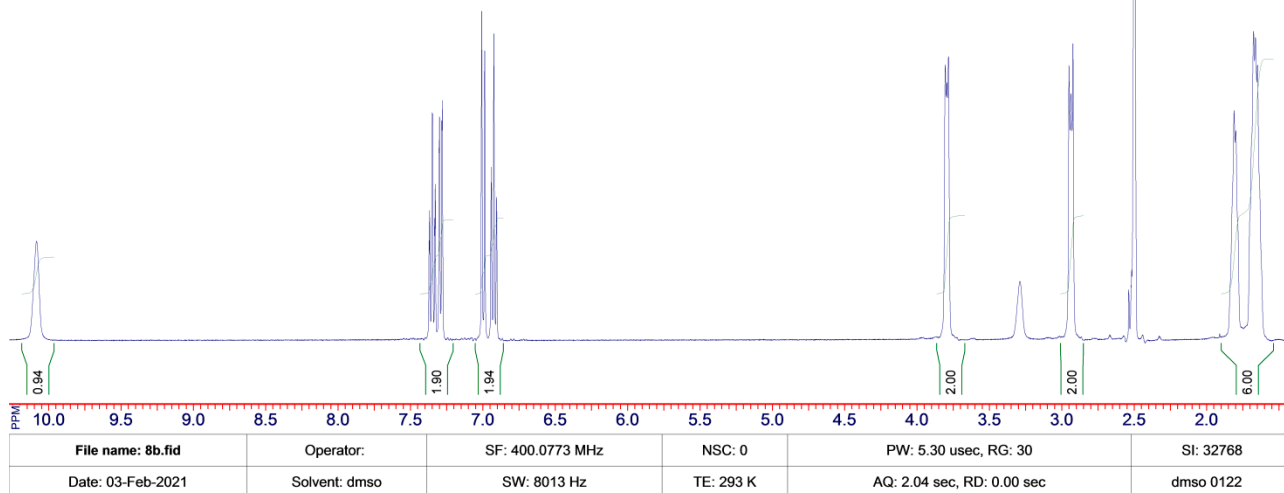
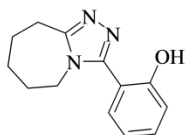


Figure S4.  $^1\text{H}$  NMR spectrum of compound **8b**

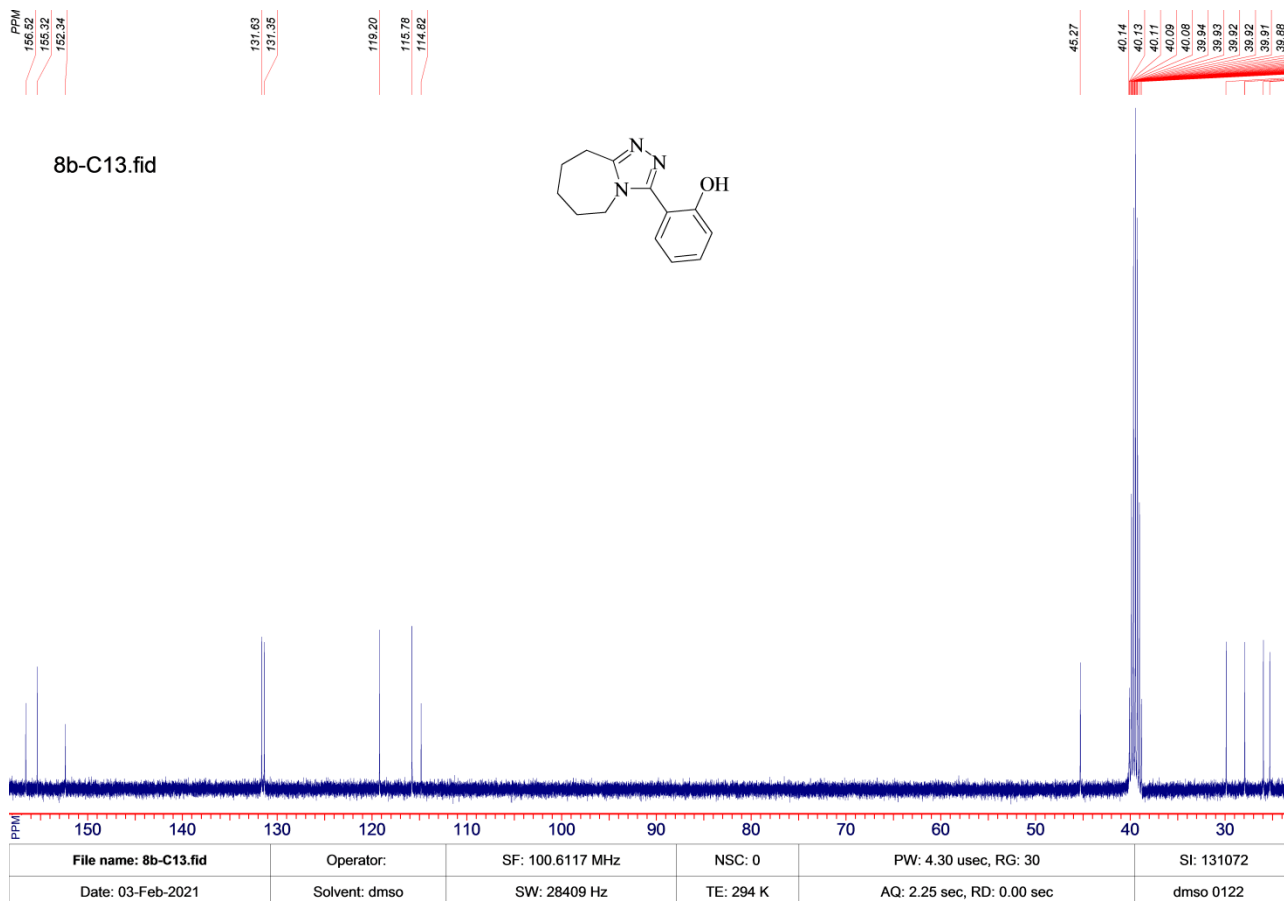
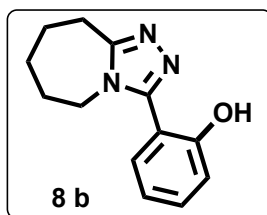
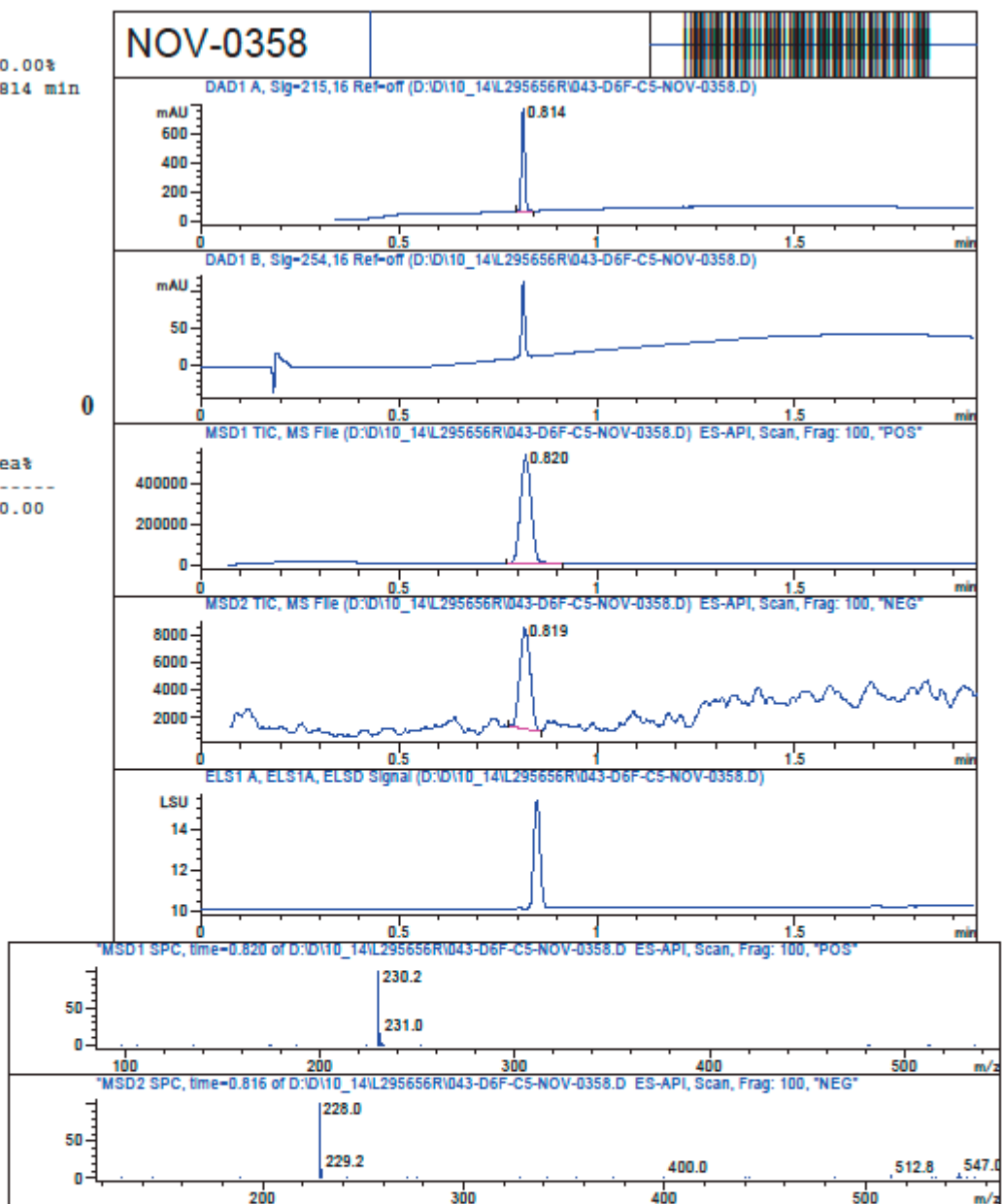


Figure S5.  $^{13}\text{C}$  NMR spectrum of compound **8b**

MaxPeak: 100.00%  
Ret\_Time: 0.814 min

Mol Wt  
Exact Mass  
# Time Area%

#	Time	Area%
1	0.814	100.00



Molecular Weight: 229,28

Figure S6. LC-MS spectrum of compound **8b**

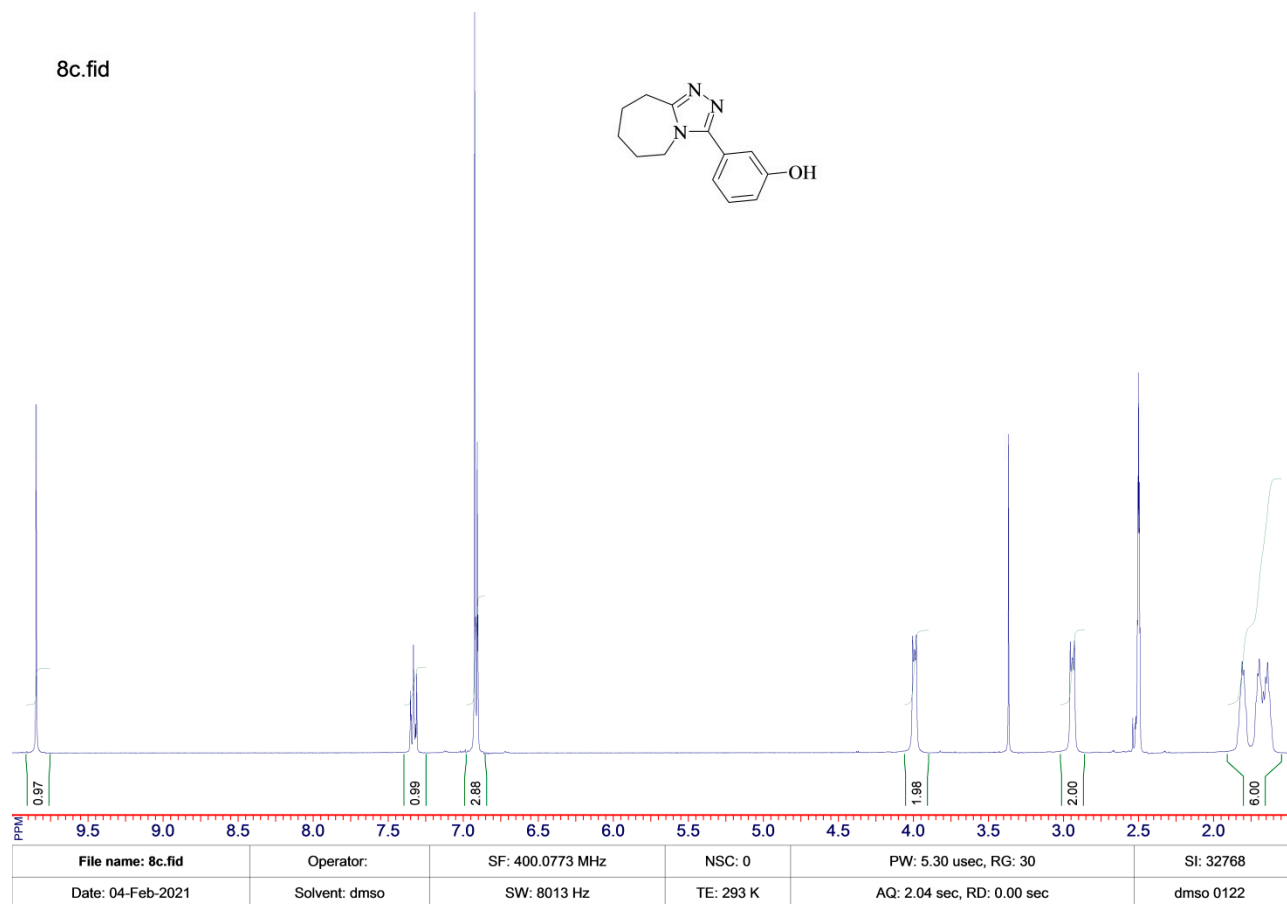


Figure S7.  $^1\text{H}$  NMR spectrum of compound **8c**

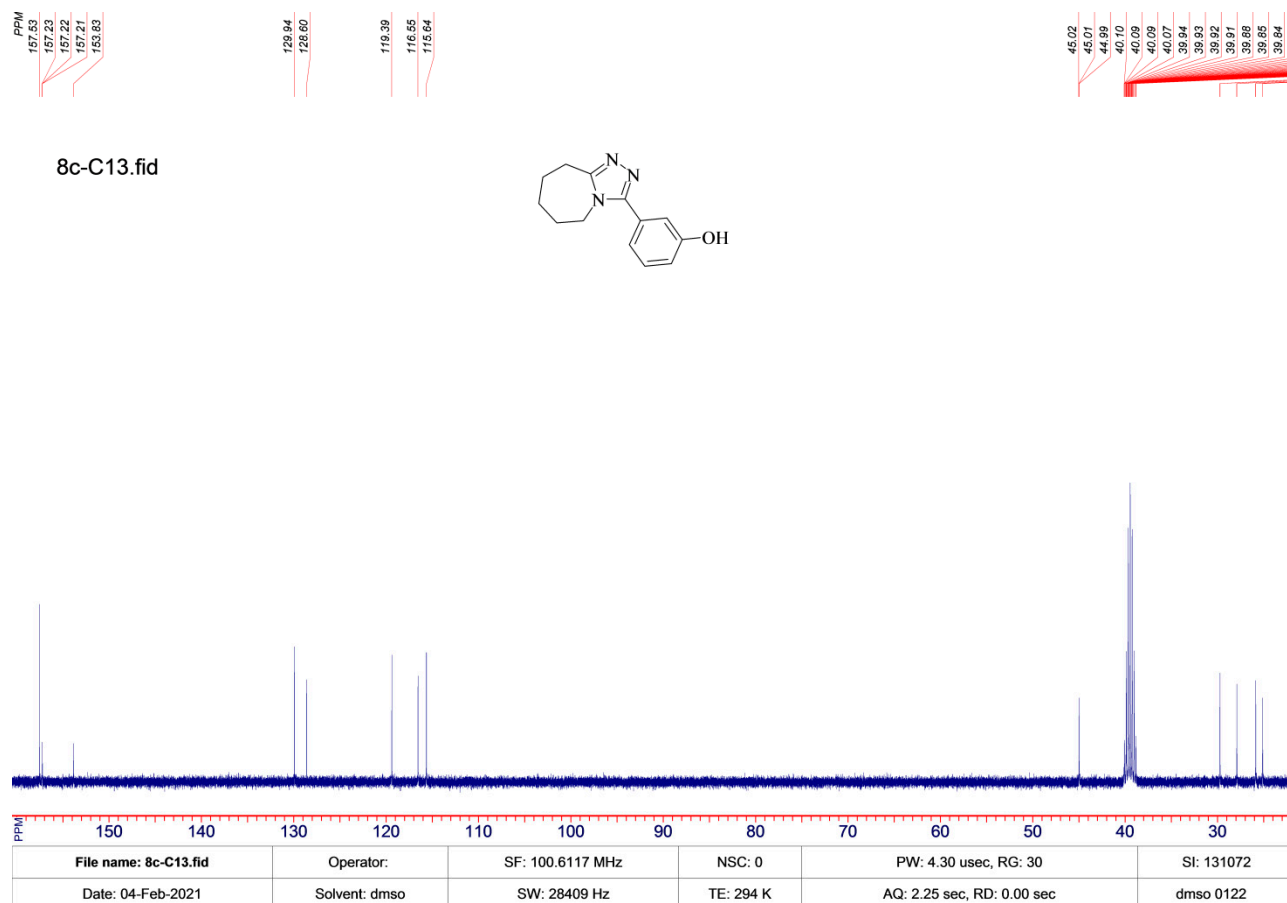
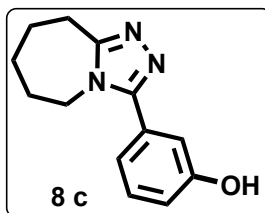
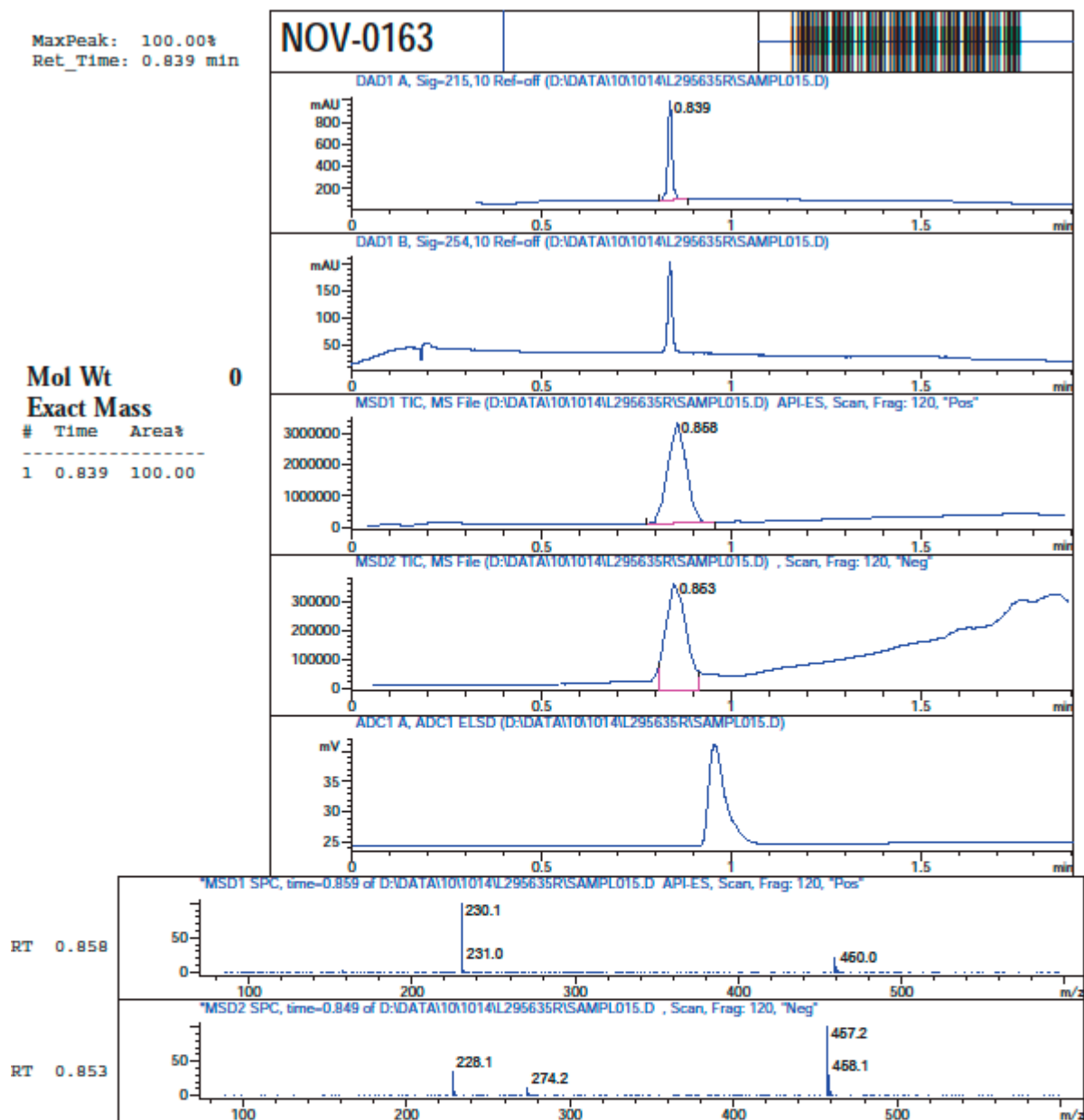


Figure S8.  $^{13}\text{C}$  NMR spectrum of compound **8c**



Molecular Weight: 229,28

Figure S9. LC-MS spectrum of compound **8c**

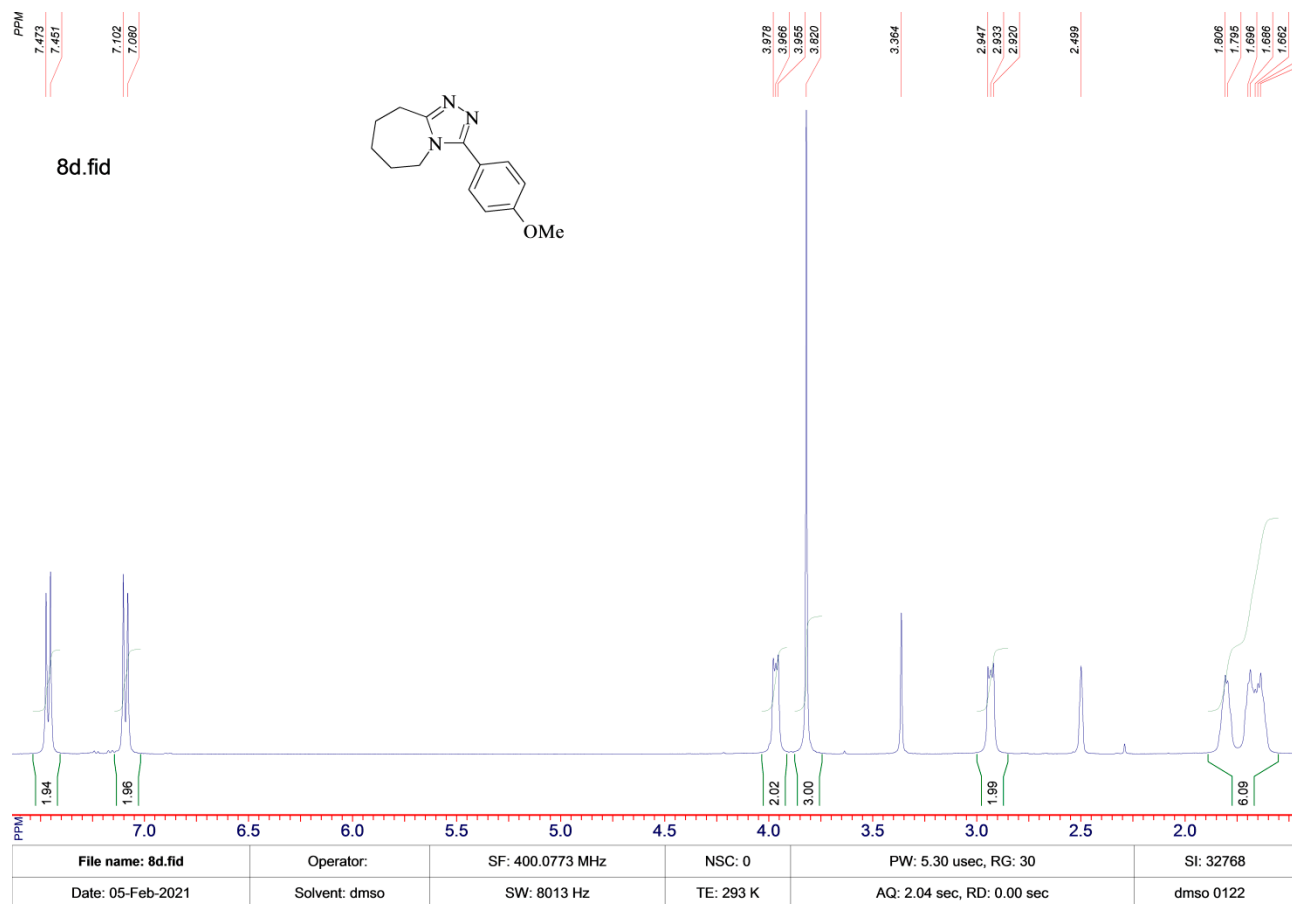


Figure S10.  $^1\text{H}$  NMR spectrum of compound **8d**

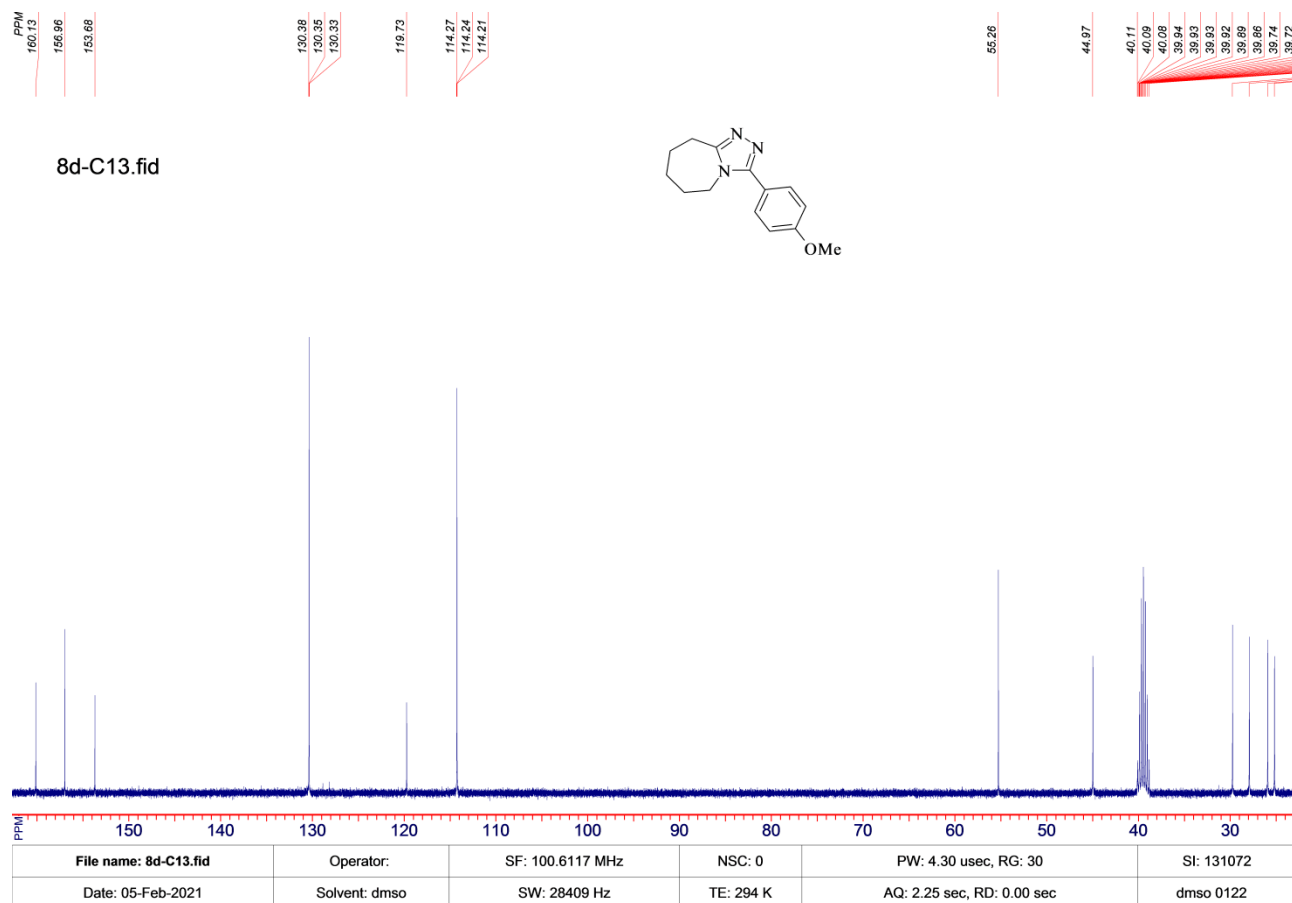
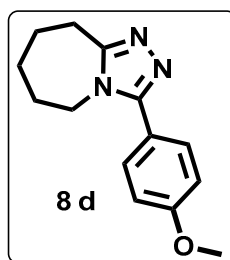
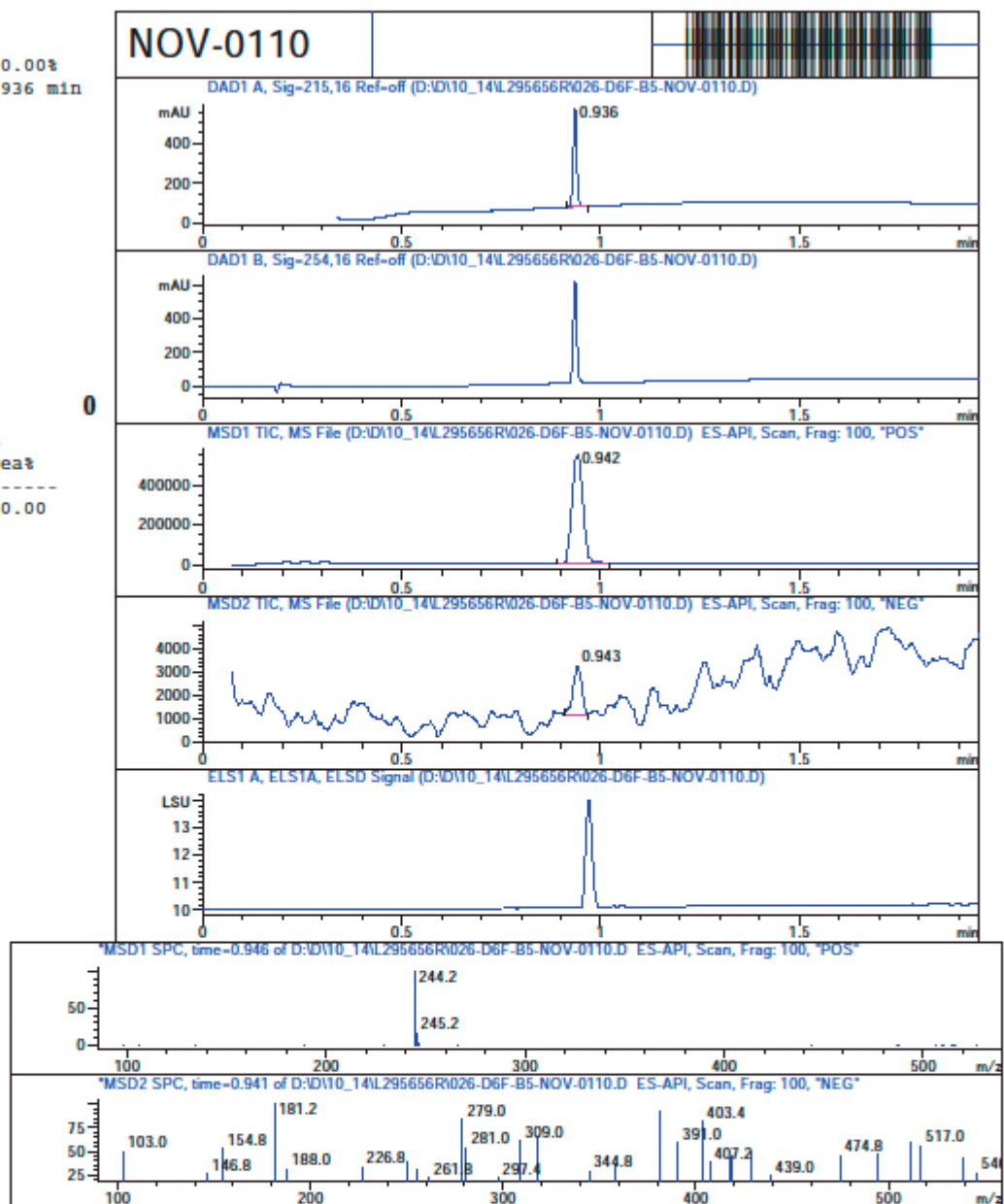


Figure S11.  $^{13}\text{C}$  NMR spectrum of compound **8d**

MaxPeak: 100.00%  
Ret\_Time: 0.936 min

Mol Wt  
Exact Mass  
# Time Area%

#	Time	Area%
1	0.936	100.00



Molecular Weight:  
243,31

Figure S12. LC-MS spectrum of compound **8d**

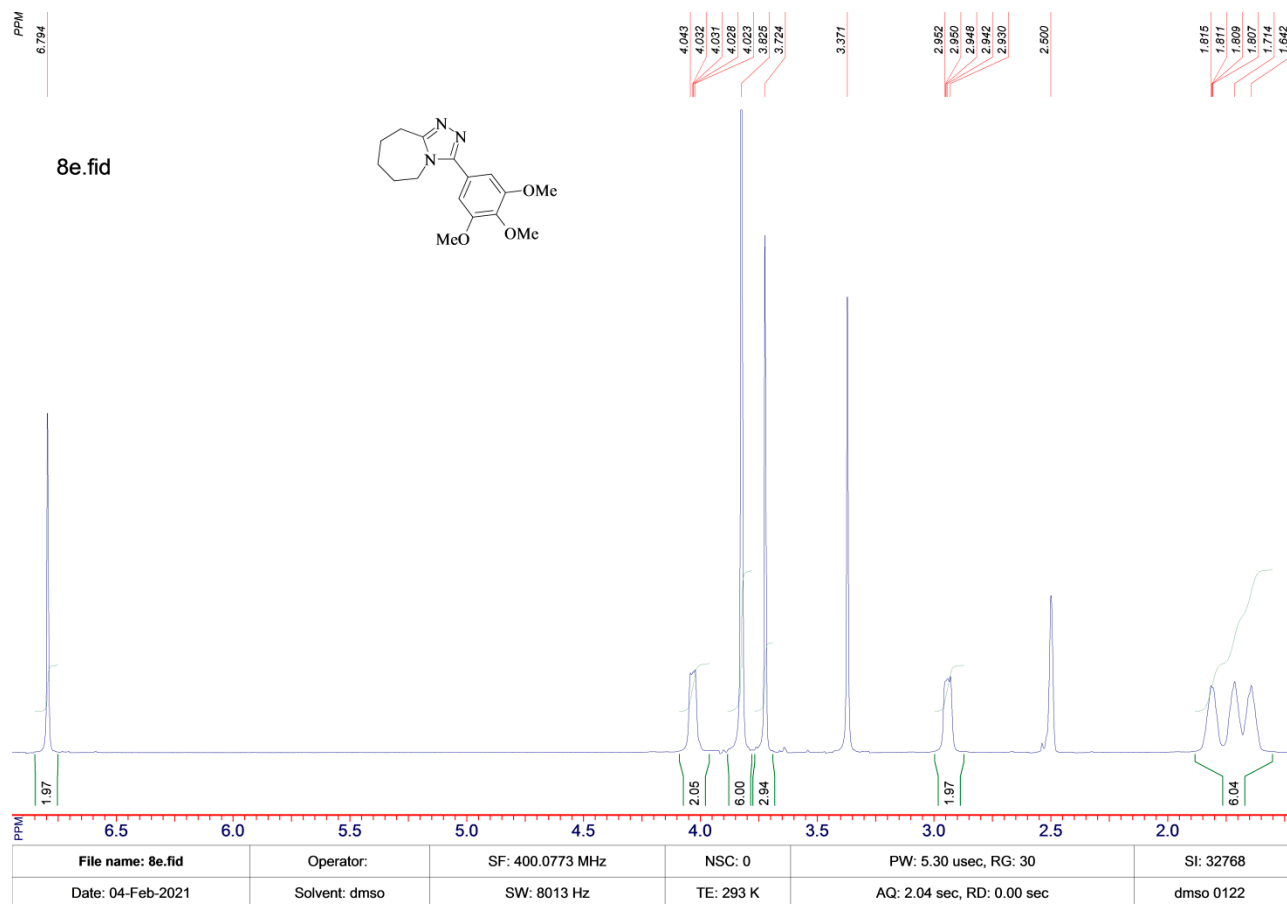


Figure S13.  $^1\text{H}$  NMR spectrum of compound **8e**

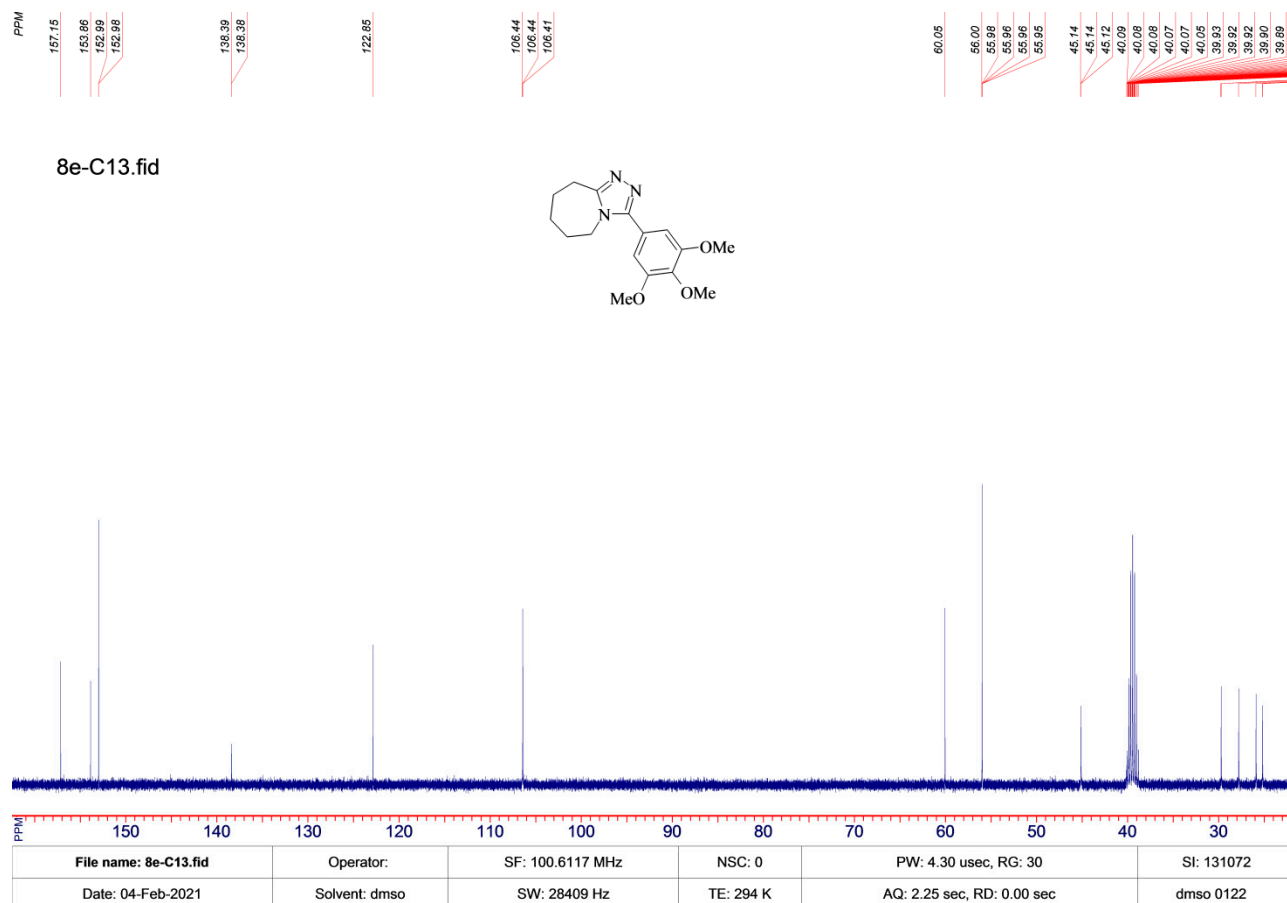
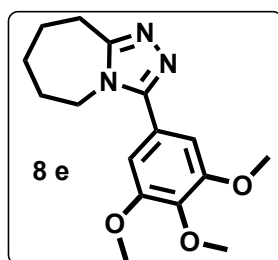
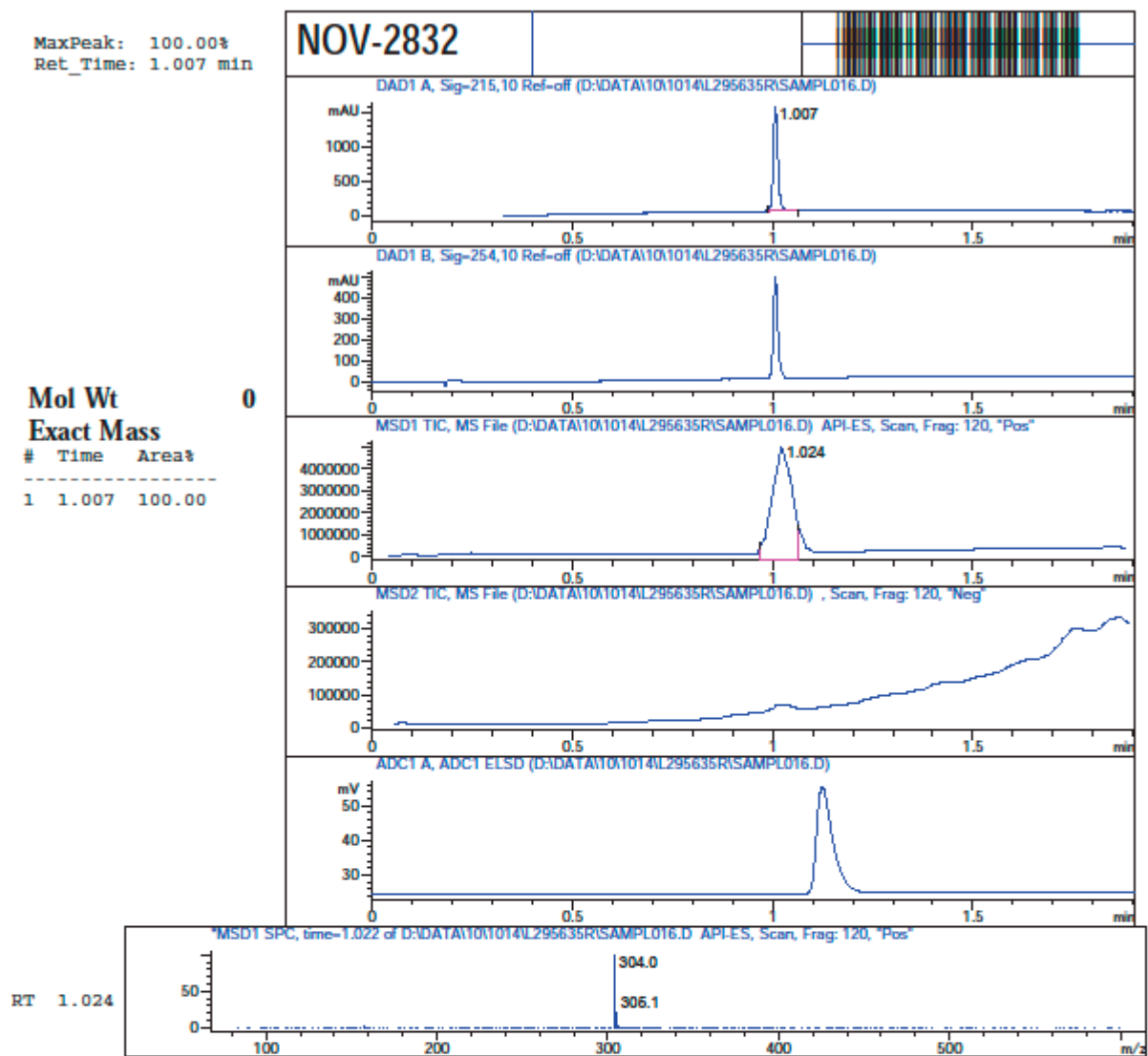


Figure S14.  $^{13}\text{C}$  NMR spectrum of compound **8e**



Molecular Weight: 303,36

Figure S15. LC-MS spectrum of compound **8e**

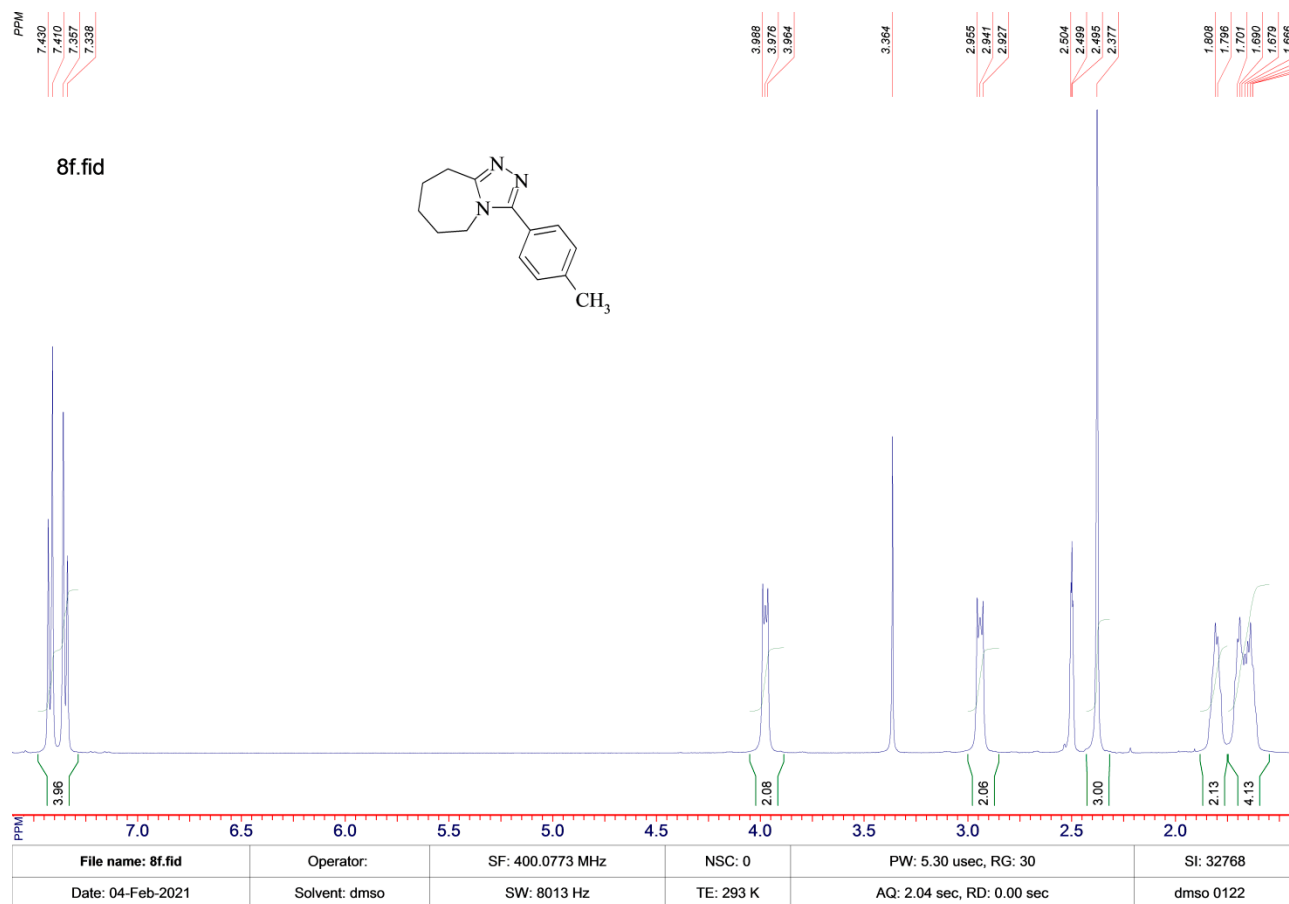


Figure S16.  $^1\text{H}$  NMR spectrum of compound **8f**

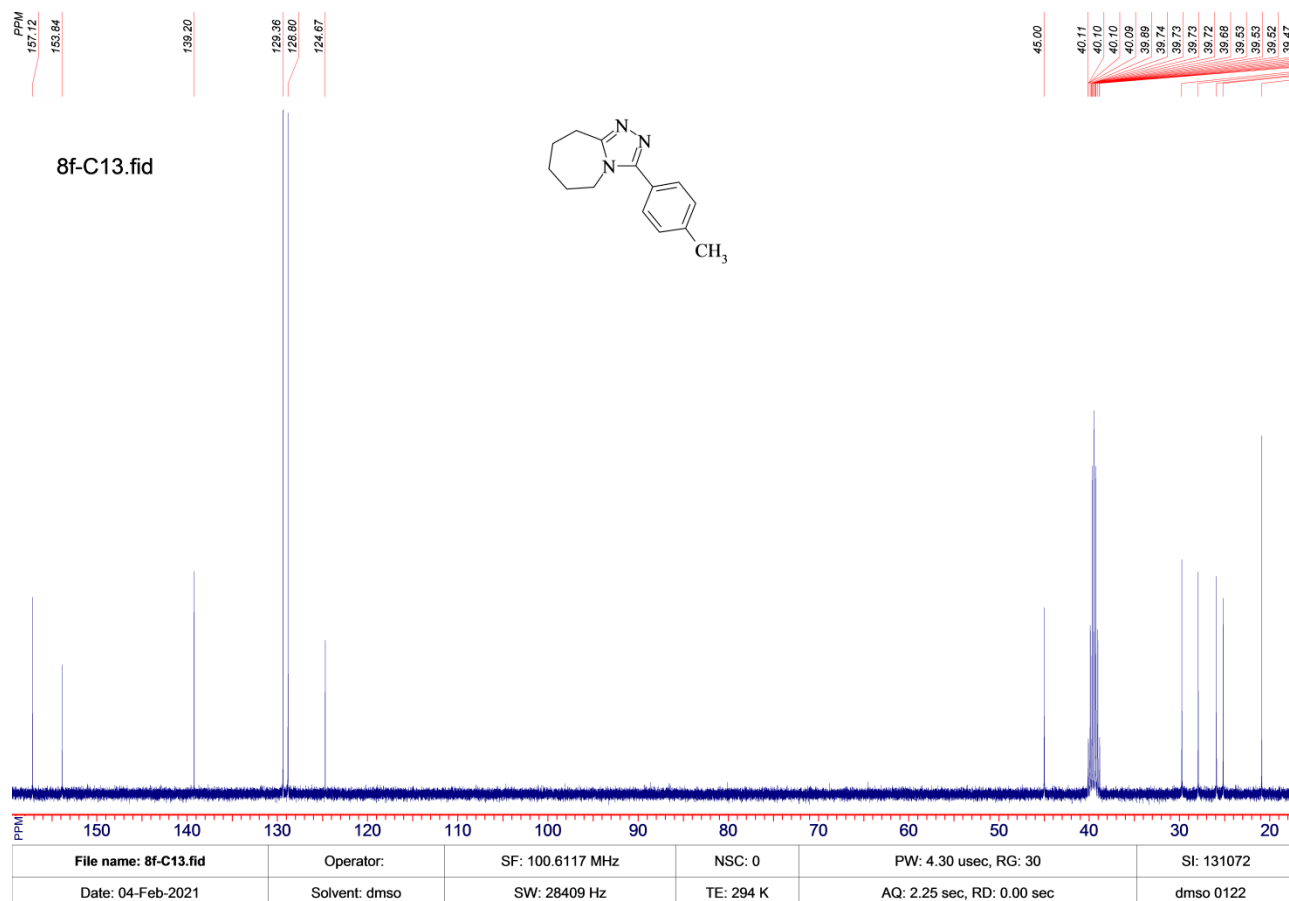
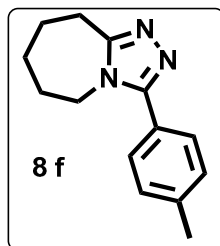
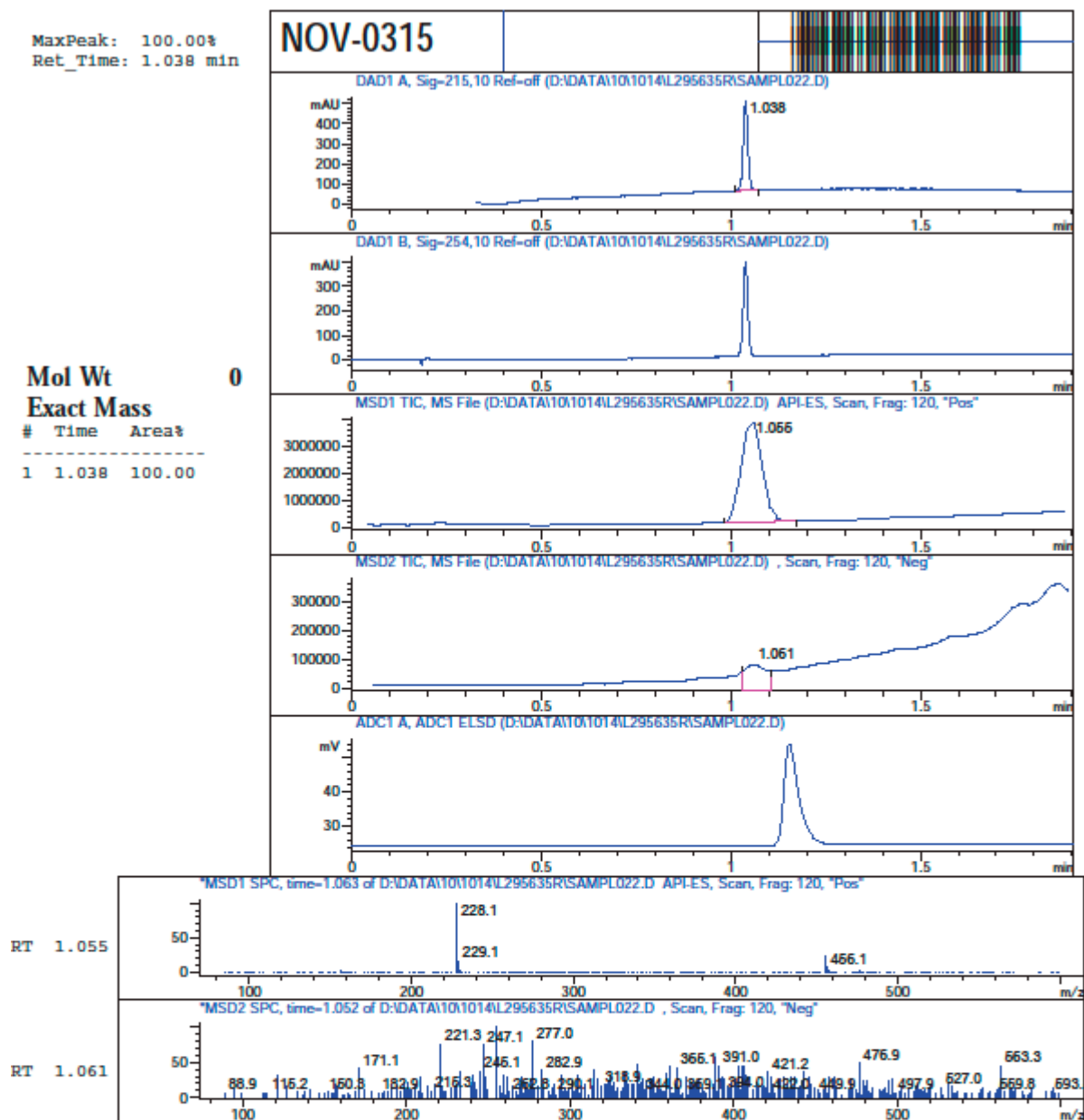


Figure S17.  $^{13}\text{C}$  NMR spectrum of compound **8f**



Molecular Weight:  
227,31

Figure S18. LC-MS spectrum of compound **8f**

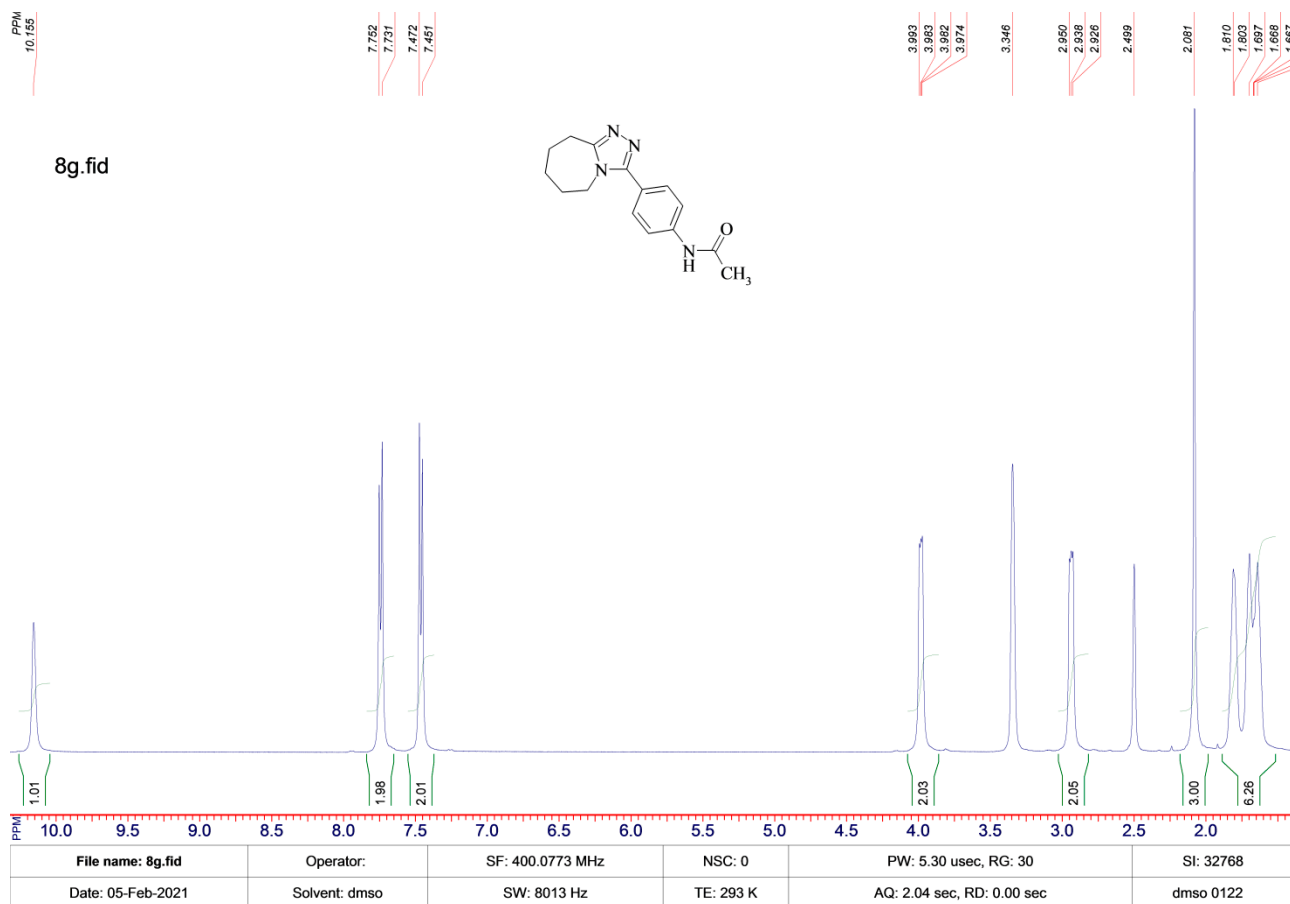


Figure S19.  $^1\text{H}$  NMR spectrum of compound **8g**

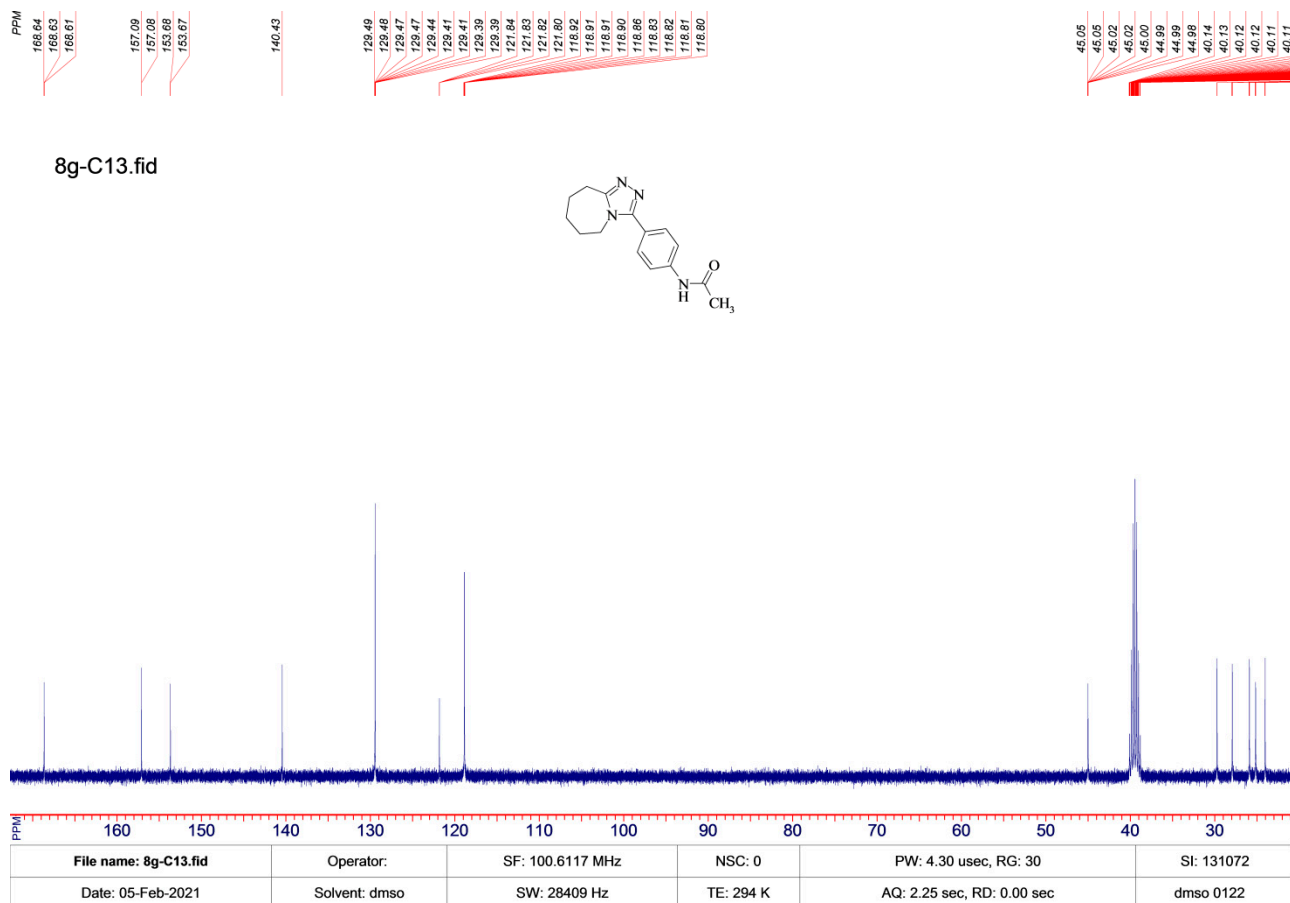
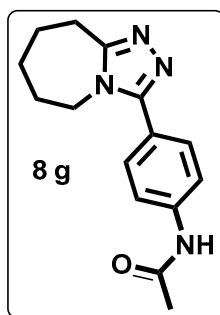
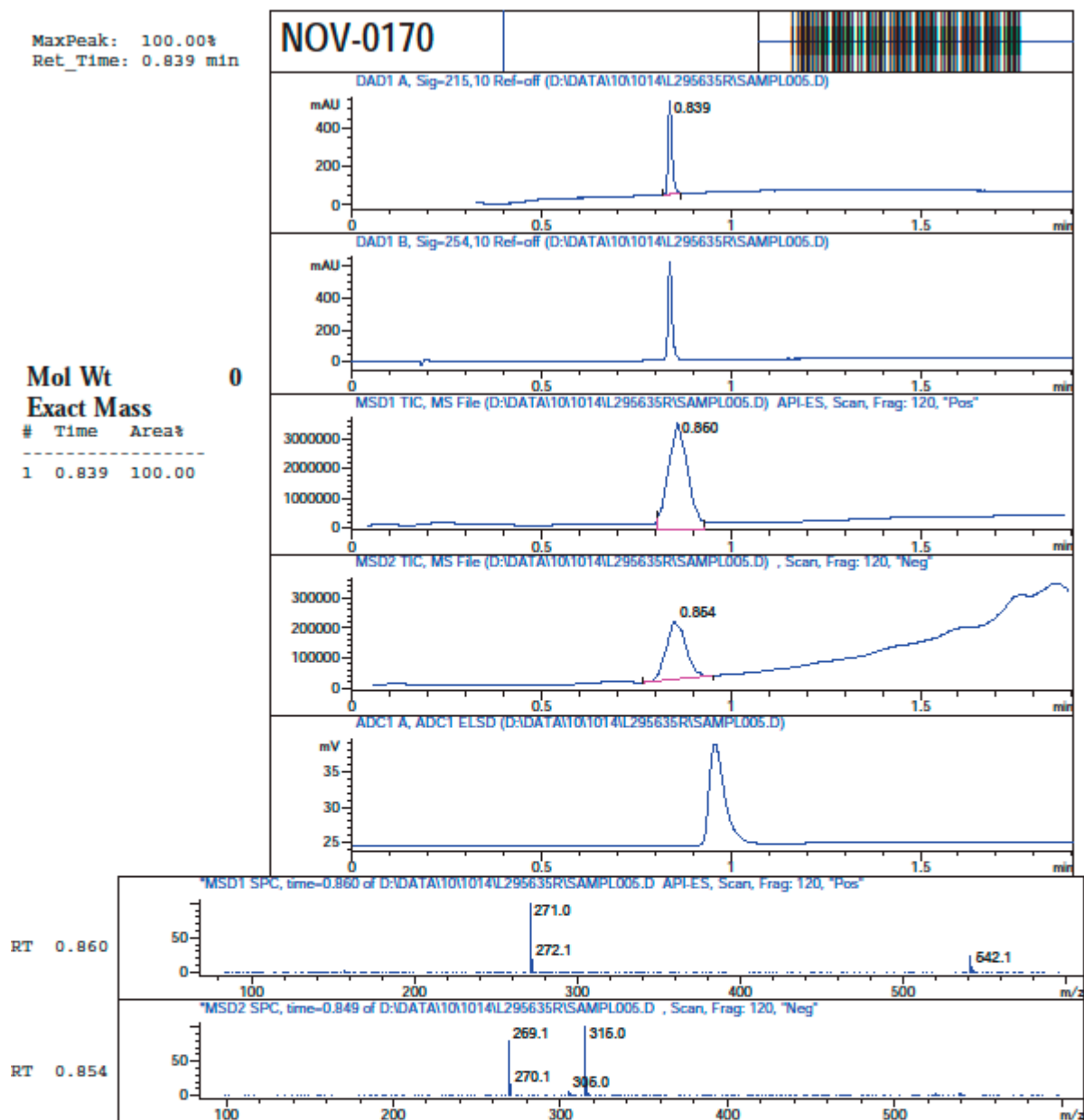


Figure S20.  $^{13}\text{C}$  NMR spectrum of compound **8g**



Molecular Weight:  
270,34

Figure S21. LC-MS spectrum of compound **8g**