



Figure S1. Fungal endophytes colonies isolated from *Alstonia scholaris* (Apocynaceae) and *Euphorbia myrsinites* (Euphorbiaceae). AS in the name of the strains means that the strain was Isolated from *S. cholaris*, and EU means isolated from *E. myrsinites*.

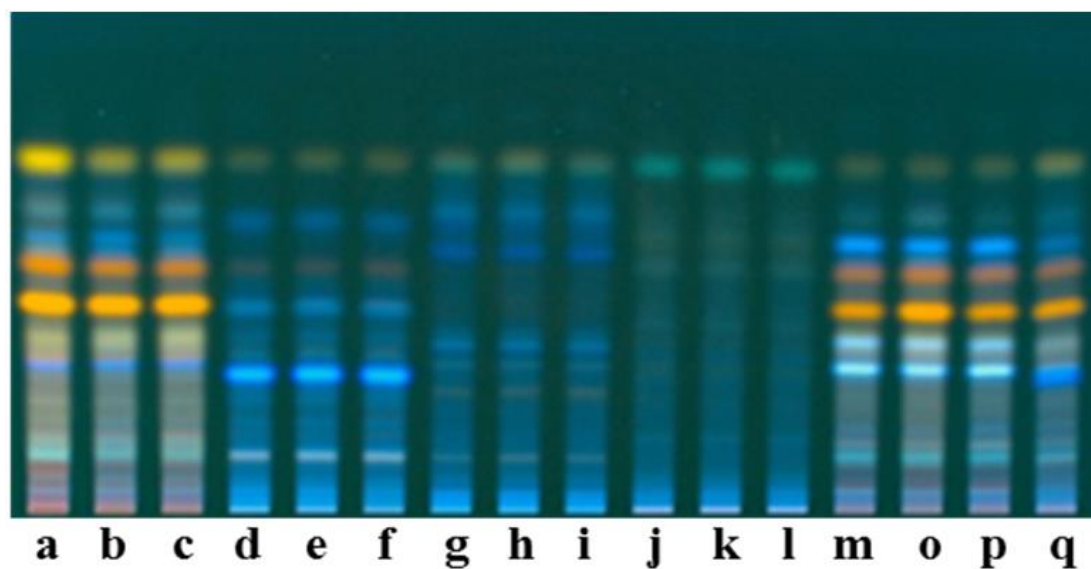


Figure S2. High performance thin layer chromatogram of five fungal endophytic strains. Each three lanes from left to right represent three biological replicates of one endophytic strain cultured on PDA. Lane “q” is a quality control sample consisting of a mix of all the extracts, which was used for further multivariate data analysis.