

Supplementary figures

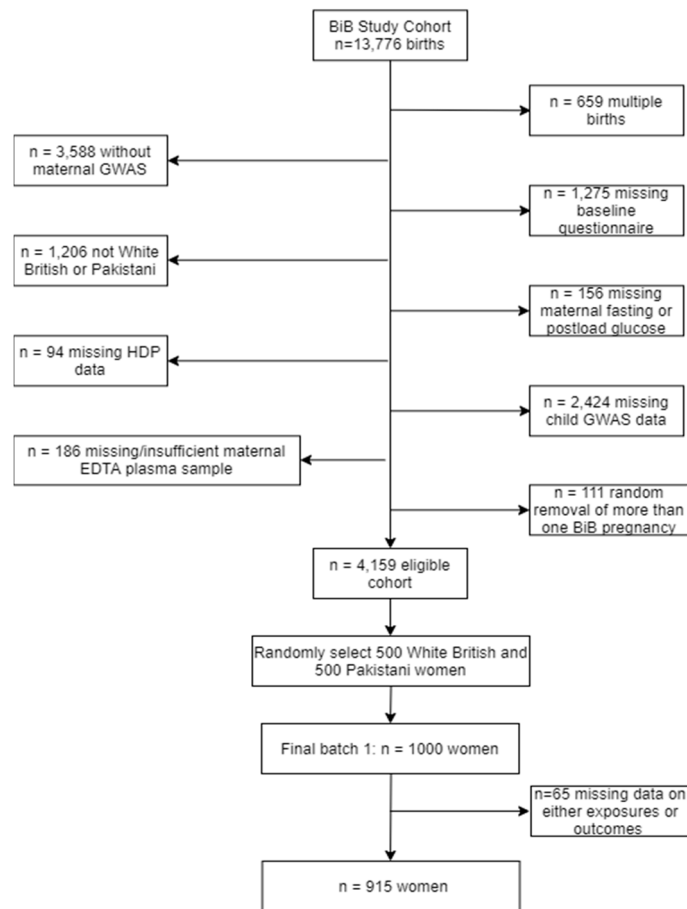


Figure S1a: Born in Bradford 1,000 flow of participants sample selection

Batch 2 - 2000 women (case-cohort design)

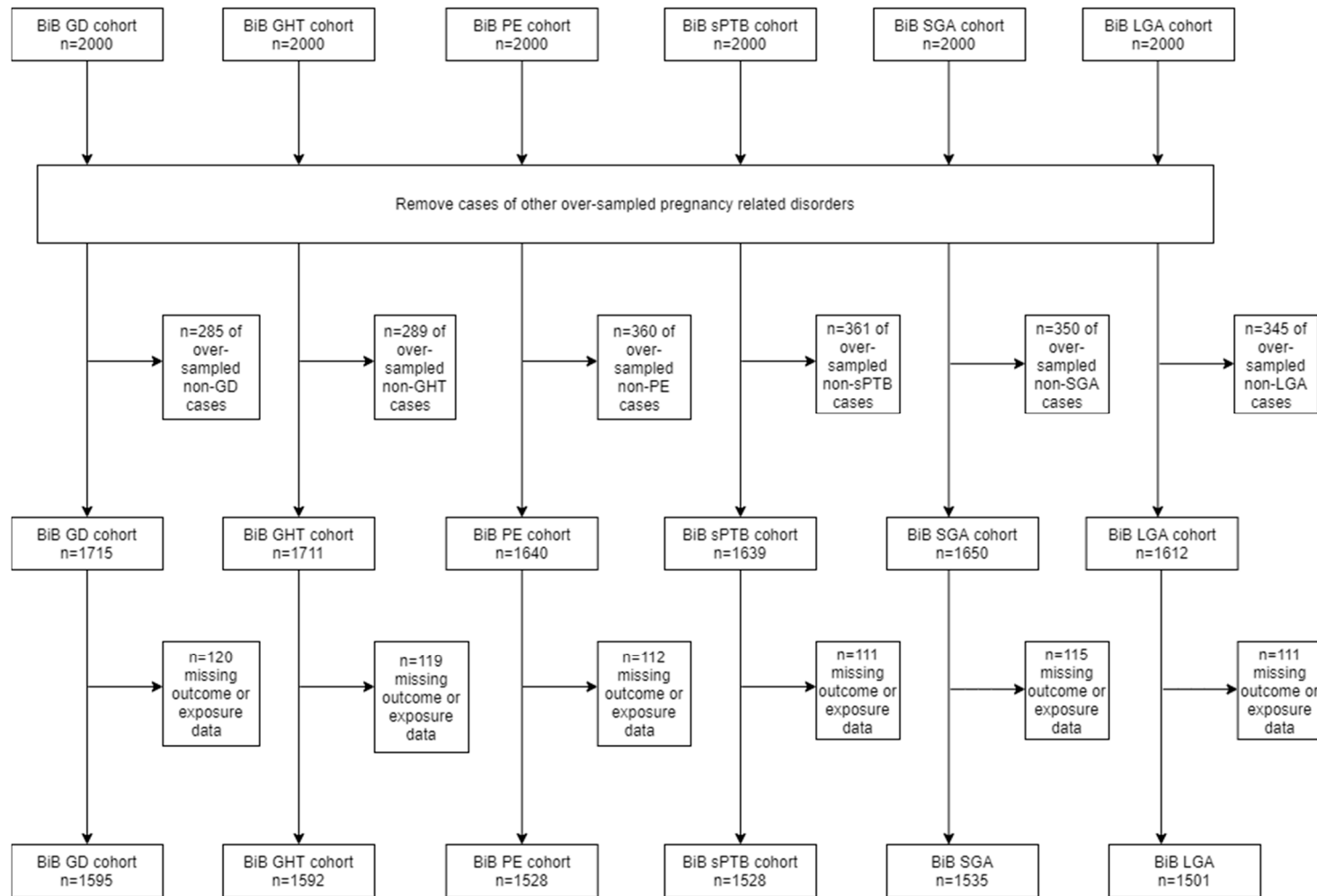


Figure S1b: Born in Bradford 2,000 flow of participants sample selection

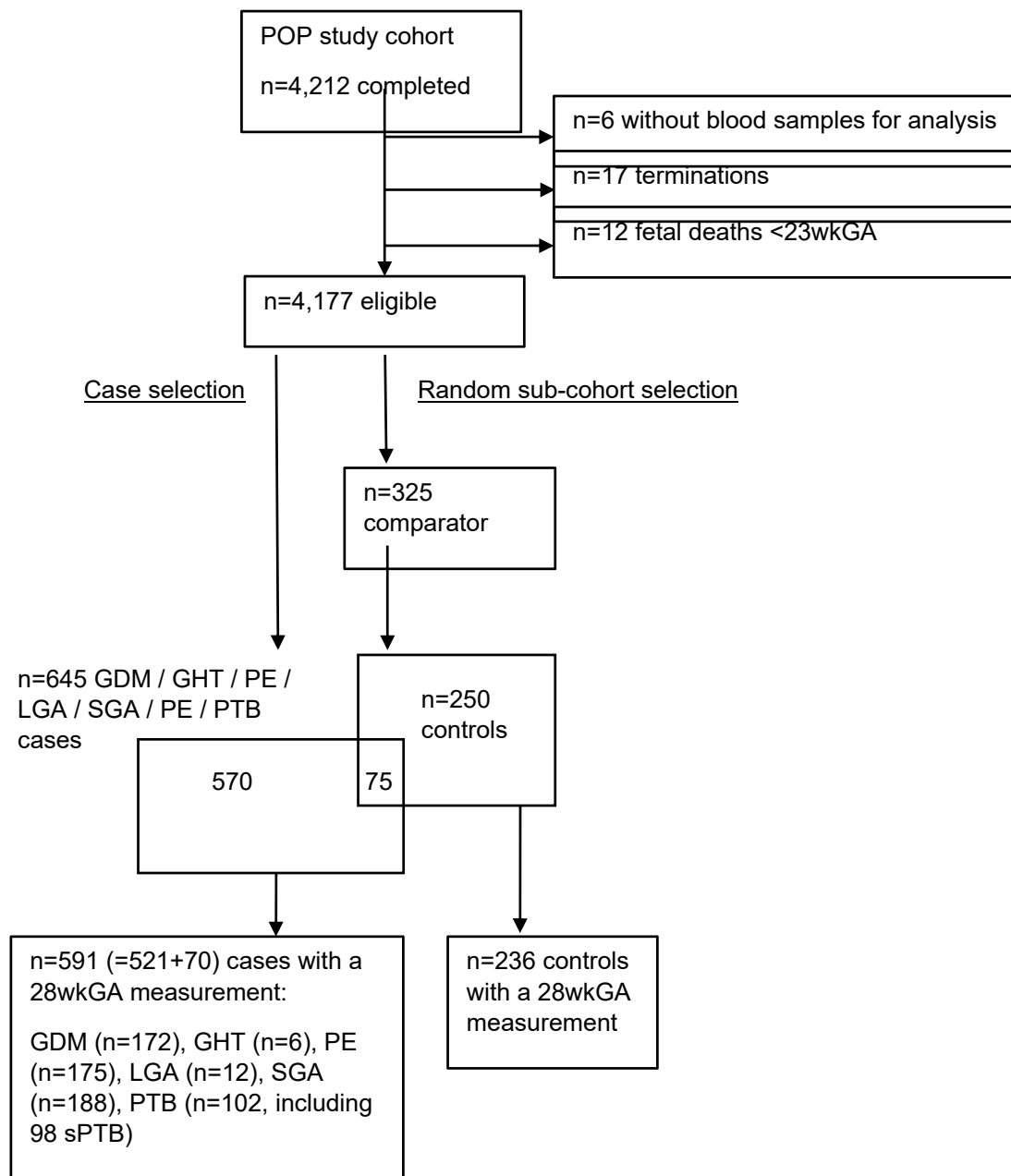


Figure S1c: Pregnancy Outcome Prediction study sample selection.

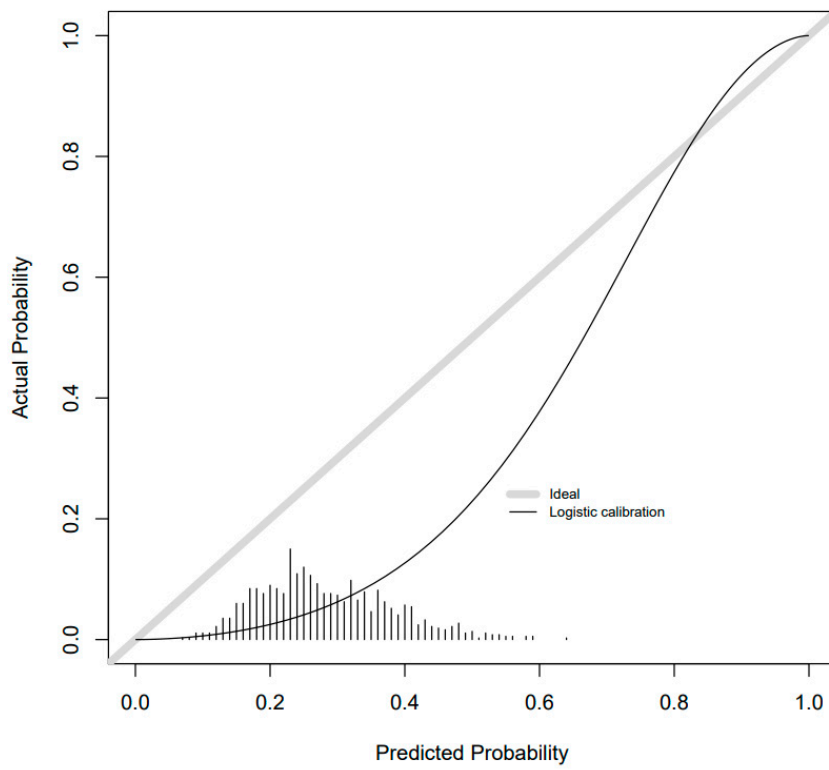


Figure S2: The calibration slope for the combined model of gestational hypertension prediction in the Born in Bradford 1000 cohort

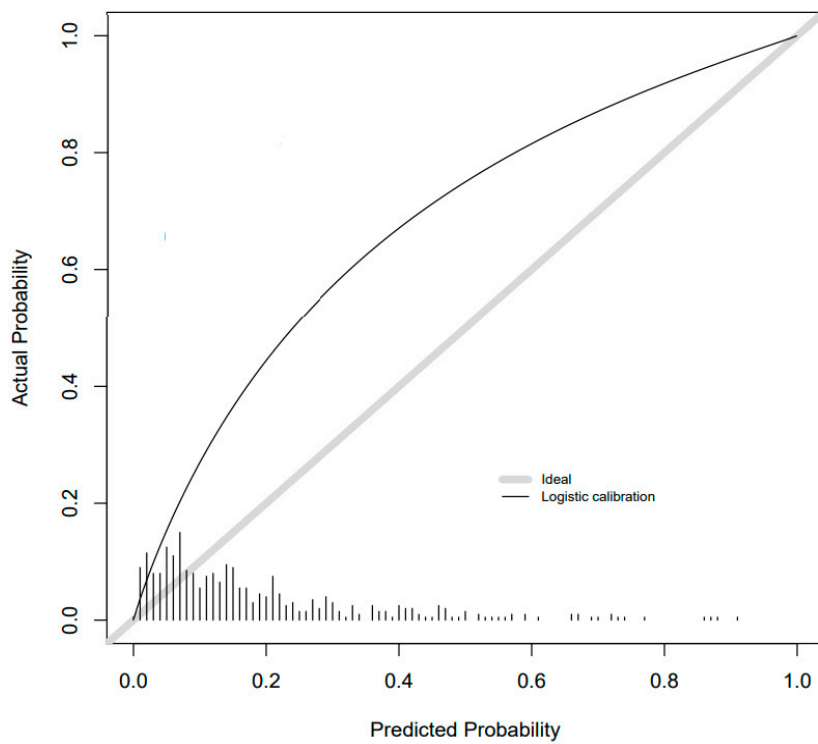


Figure S3: The calibration slope for the combined model of gestational diabetes prediction in the Pregnancy Outcome Prediction study

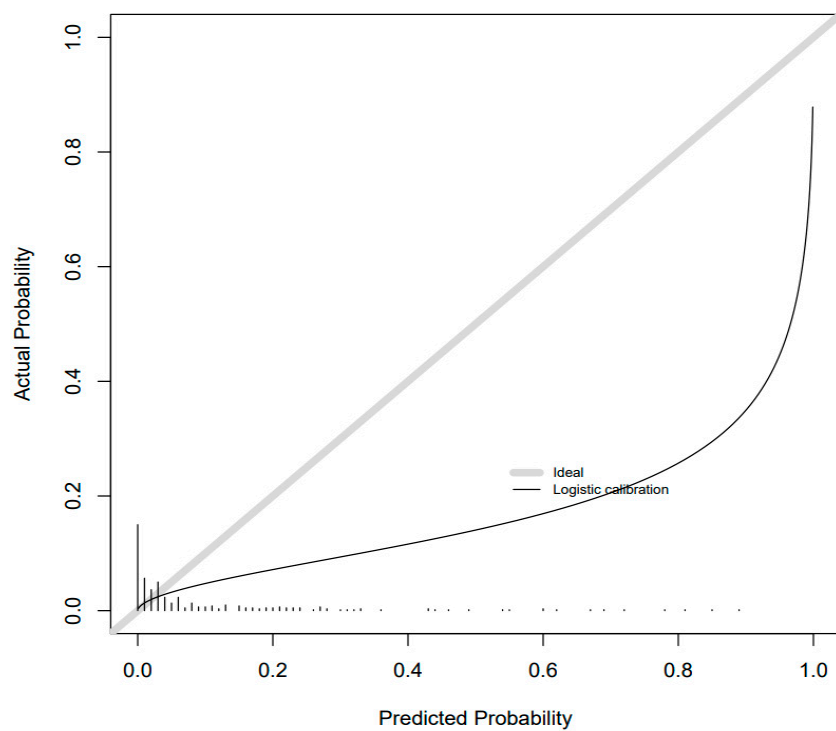


Figure S4: The calibration slope for the combined model of large for gestational age prediction in the Pregnancy Outcome Prediction study

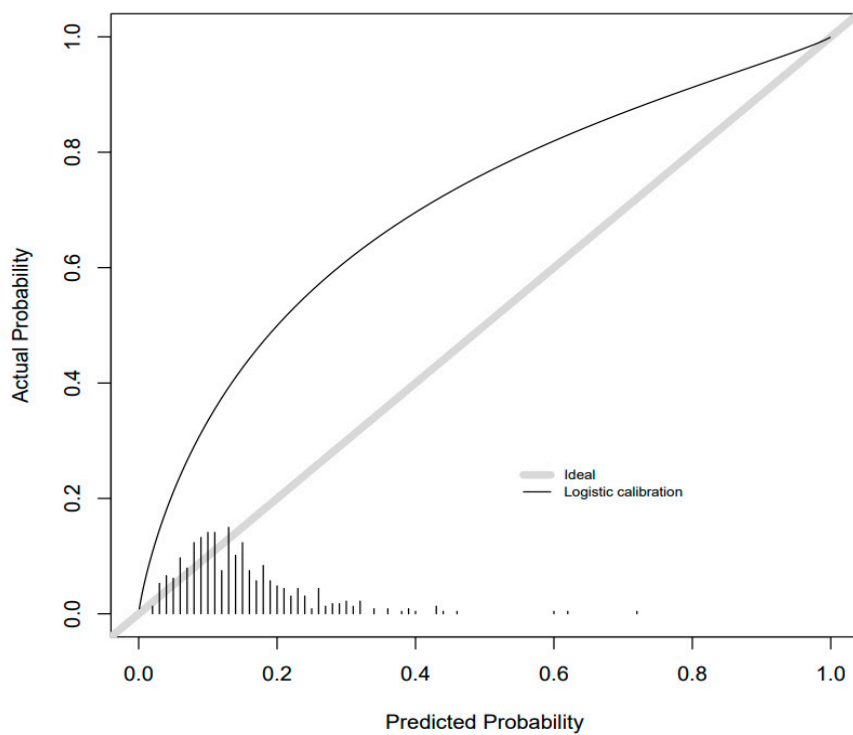


Figure S5: The calibration slope for the combined model of small for gestational age prediction in the Pregnancy Outcome Prediction study

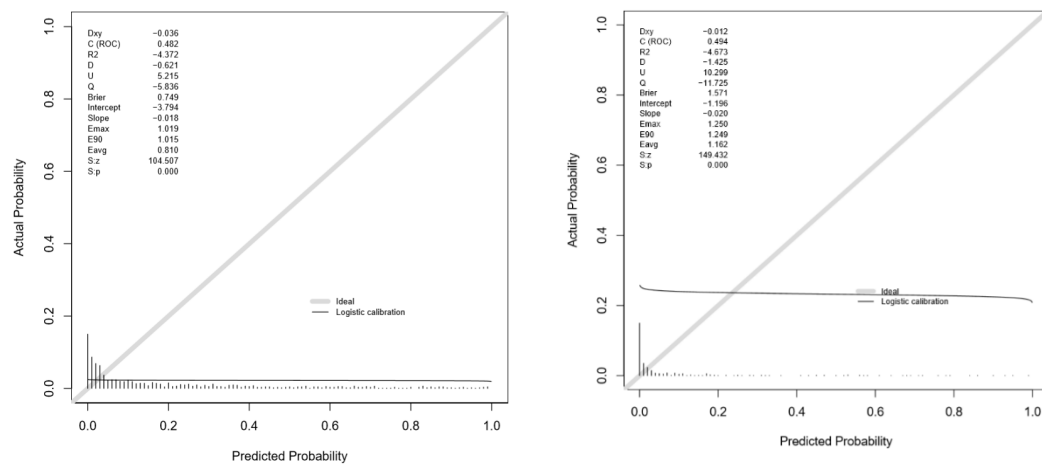


Figure S6: The calibration slope for the combined model of spontaneous preterm birth prediction in the Born in Bradford 1000 cohort and the Pregnancy Outcome Prediction study

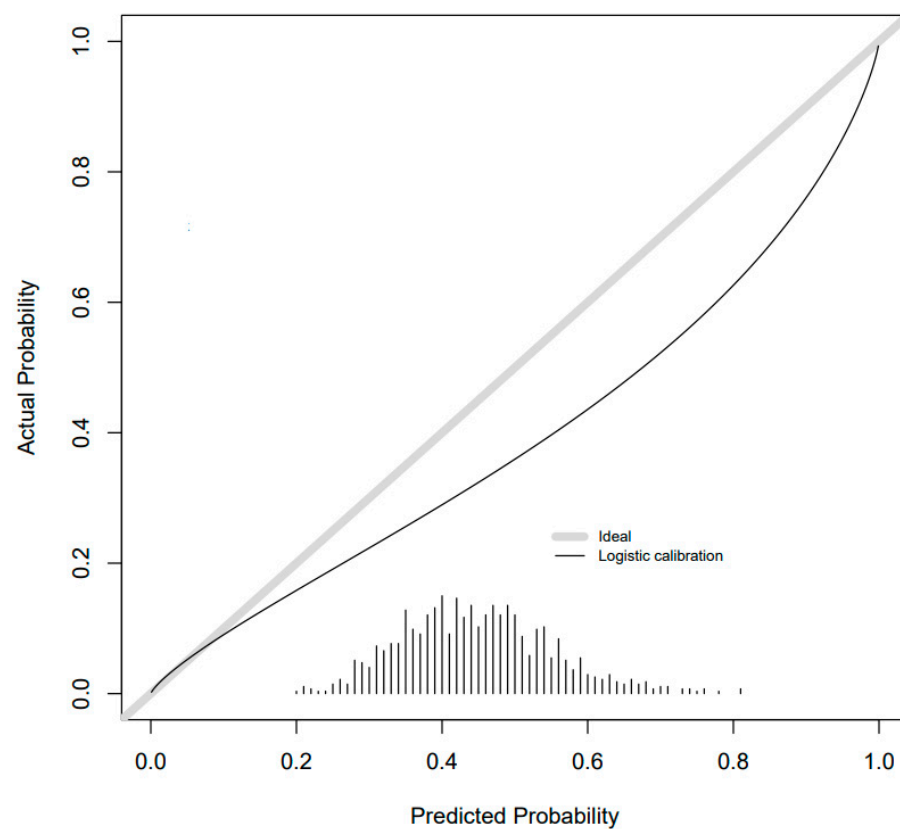


Figure S7: The calibration slope for the combined model of all pregnancy related disorder prediction in the Born in Bradford 1000 cohort