

Table S3. Multivariate analysis of the correlation of clinical variables with overall survival in TETs.

Clinical factors	Variables	P value	HR (95%CI)
WHO type	A/AB/B1 vs B2/B3/C	0.6	0.68 (0.15-3)
Masaoka stage	I/II vs III/IV	0.34	2.3 (0.41-13)
Sex	Male vs Female	0.7	1.4 (0.29-6.5)
Age	≤ 60 vs >60 (years old)	0.089	4.5 (0.8-25)
Cluster	Cluster1 vs Cluster2	0.55	1.7 (0.29-10)
Metabolite score	High score vs Low score	0.028	0.077 (0.0079-0.75)

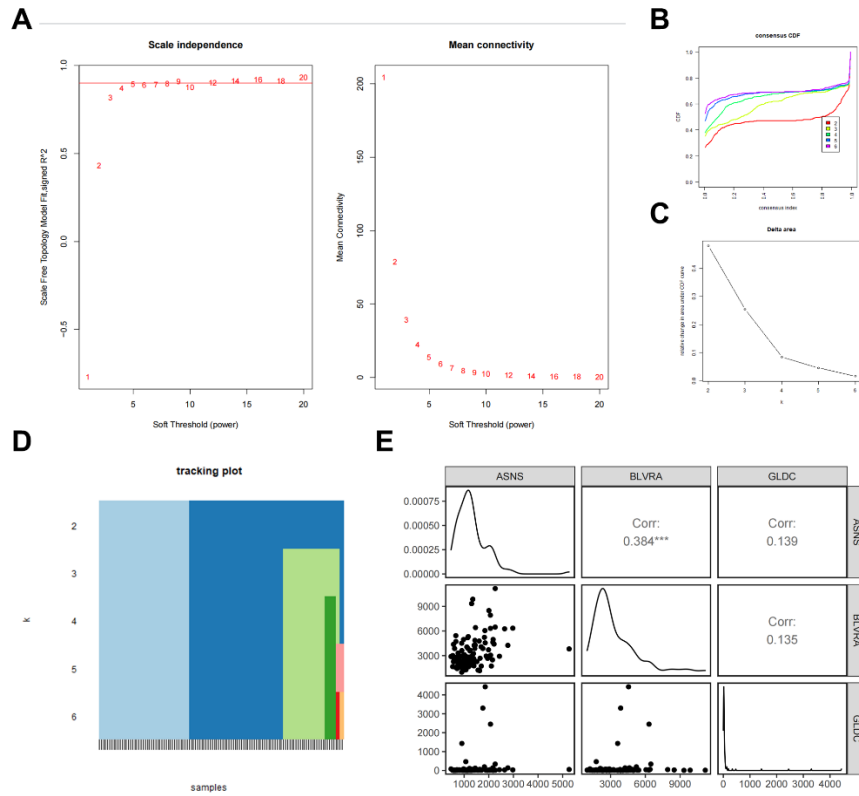


Figure S2. (A) A power of $\beta = 4$ (scale-free $R^2 = 0.87$) was selected as the soft threshold in WGCNA; (B–D): The proportion of expression similarity and ambiguous clustering measures for the 137 TP-MRGs in consensus clustering; (E) Correlation analysis showed no collinear expression existed.

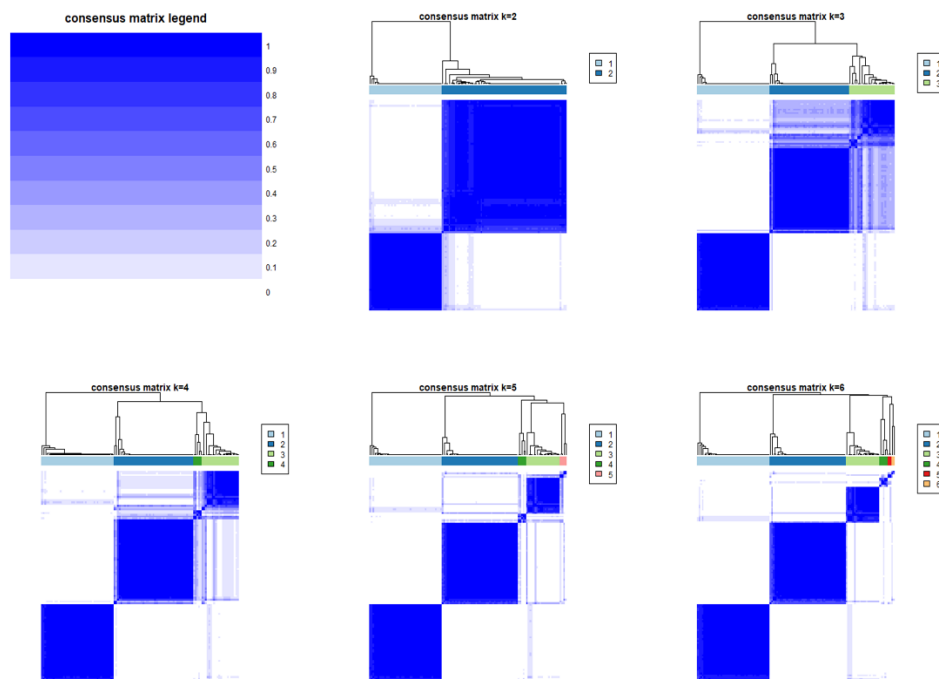


Figure S3. (A) The proportion of expression similarity and ambiguous clustering measures for the 137 TP-MRGs in consensus clustering.

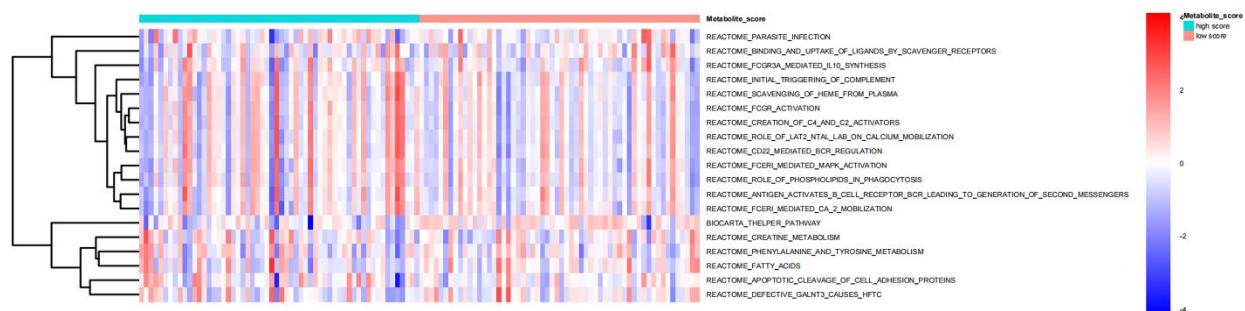


Figure S4. Gene set variation analysis (GSVA) showing the differentially enriched pathways in high- and low-metabolic-score groups.