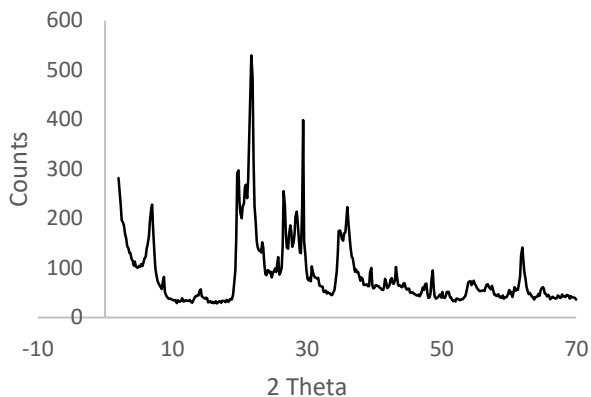
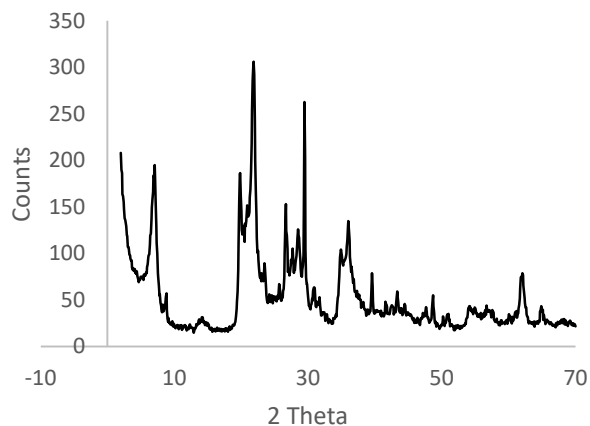
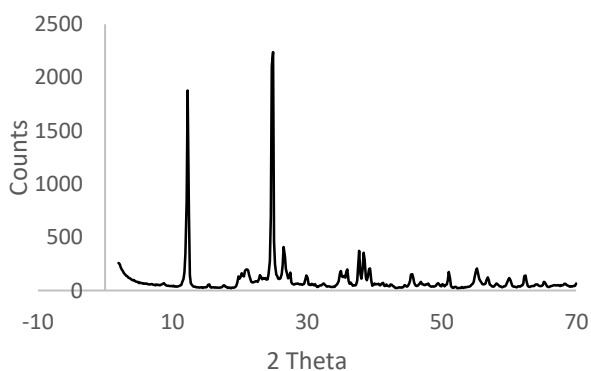
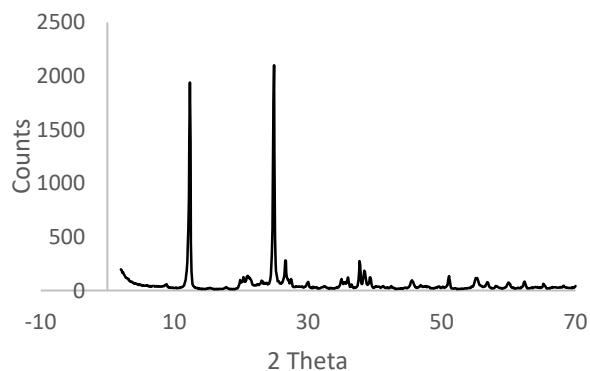


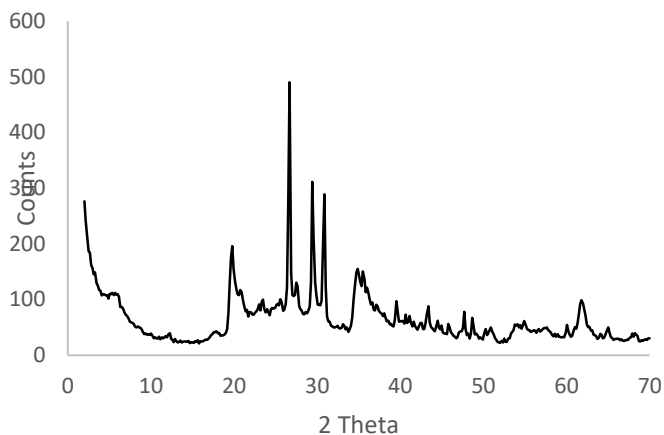
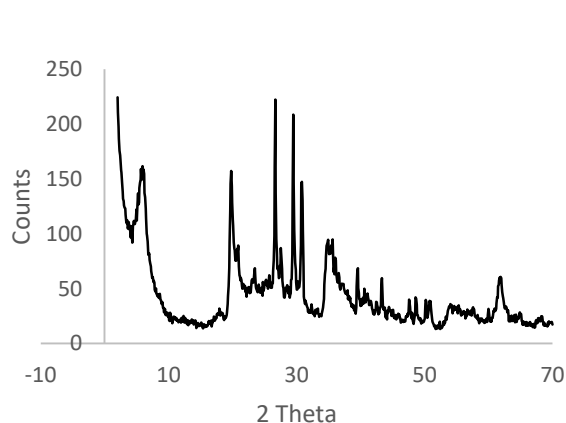
Clay A, analyses 1 and 2: 40% Cristobalite, 20% Montmorillonite, 16% Calcite, 8% Illite, 5% Quartz



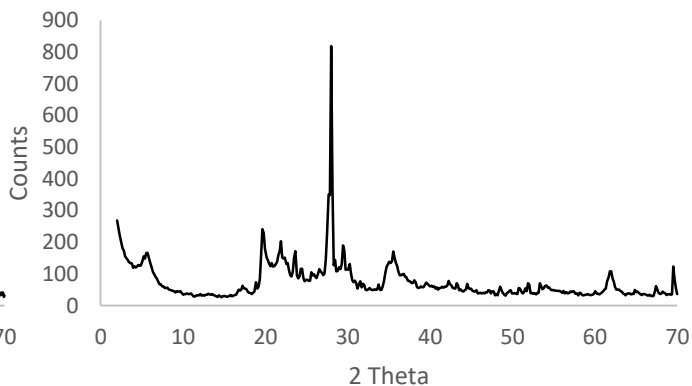
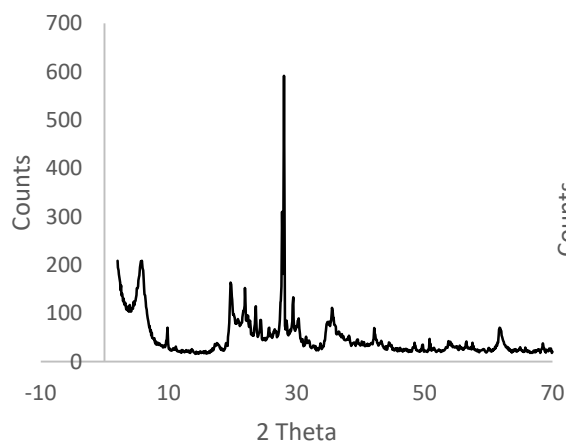
Clay B, analyses 1 and 2: 87% Kaolinite, 10% Quartz, 3% Illite



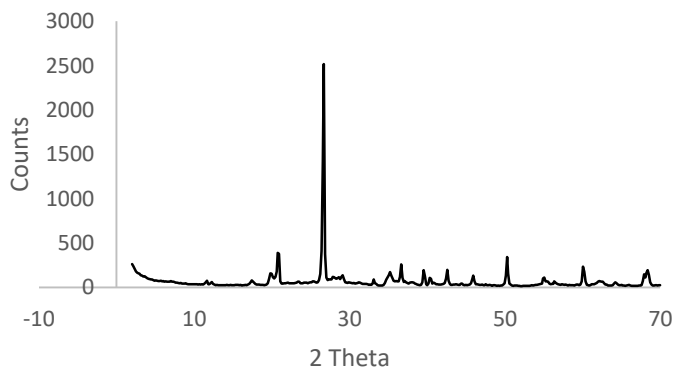
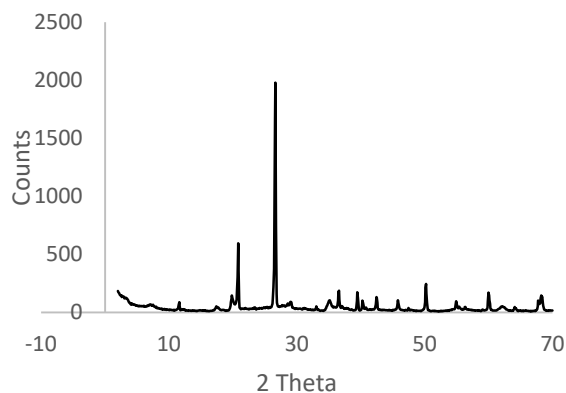
Clay C, analyses 1 and 2: 32% Montmorillonite, 25.5% Quartz, 20% Calcite, 16% Dolomite, 6.5% Kaolinite



Clay D, analyses 1 and 2: 55% Montmorillonite, 31% Anorthoclase, 8% Cristobalite, 6% Calcite



Clay E, analyses 1 and 2: 91% Quartz, 3% Gypsum, 3% Kaolinite, 2% Illite-Smectite



Clay F, analyses 1 and 2: 37% Kaolinite (halloysite), 23% Hematite, 17% Magnetite, 17% Illite, 6% Anorthoclase

