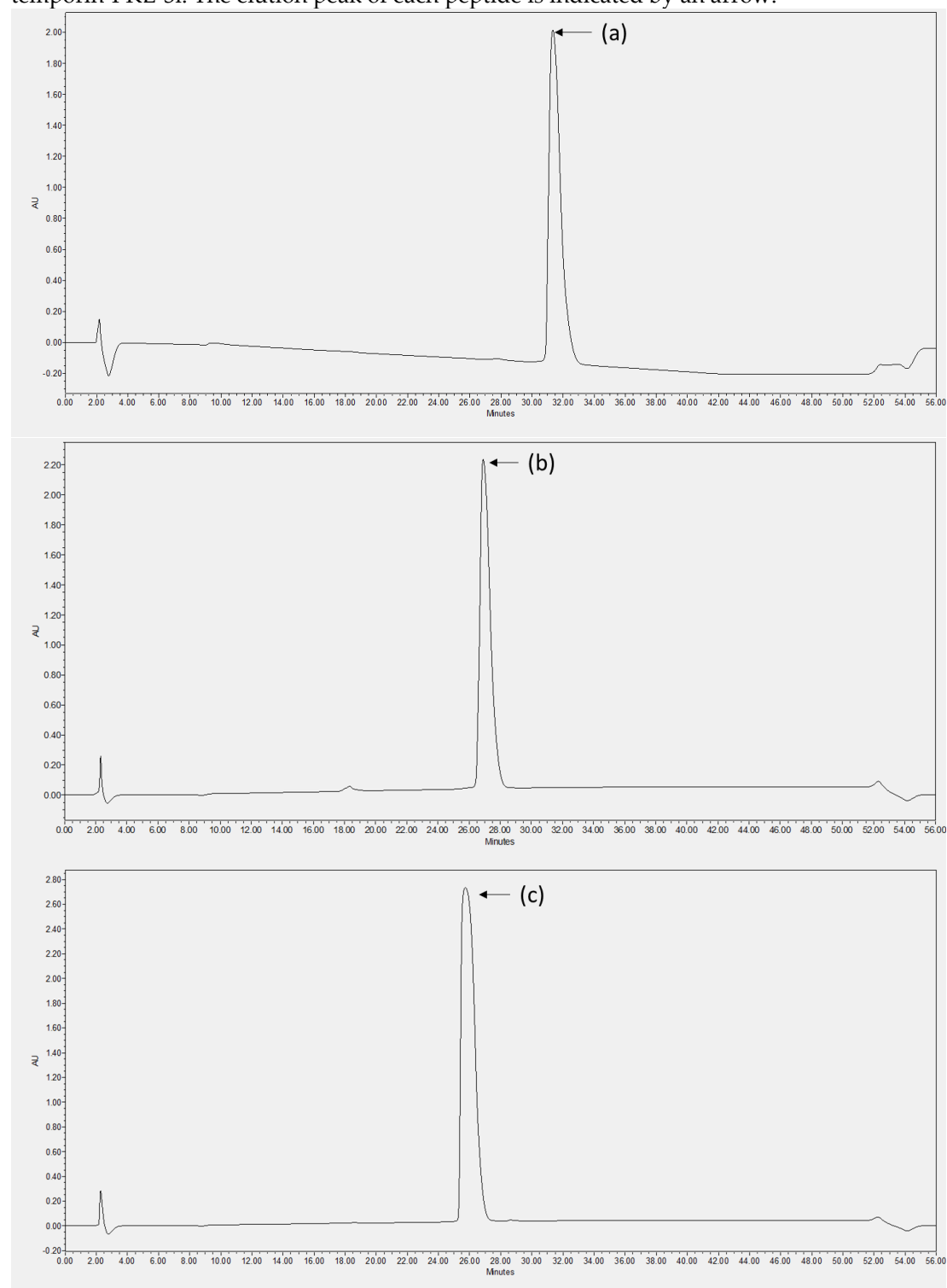
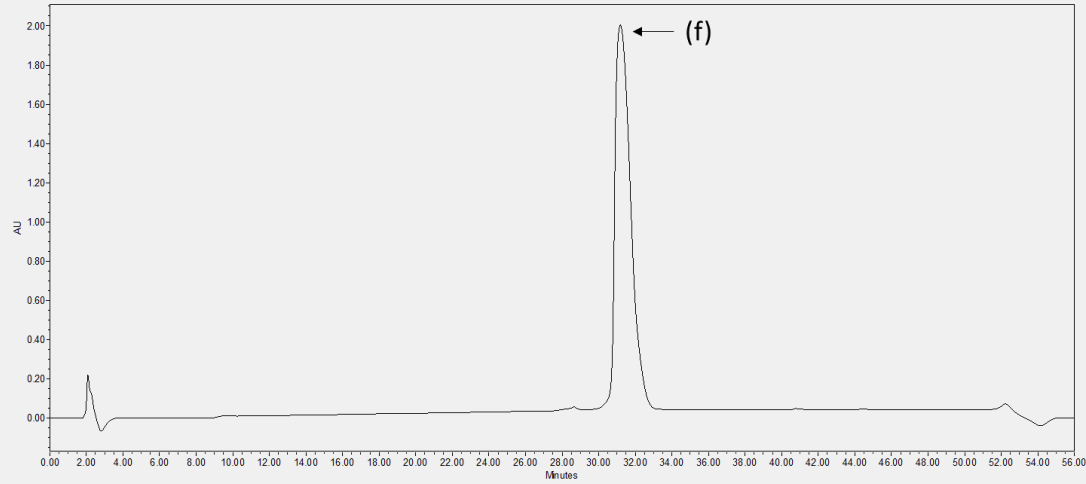
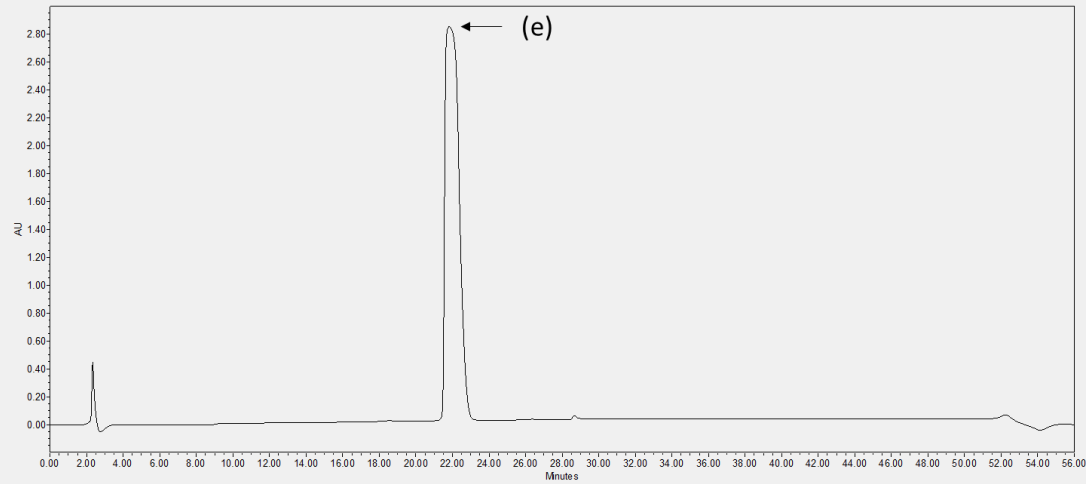
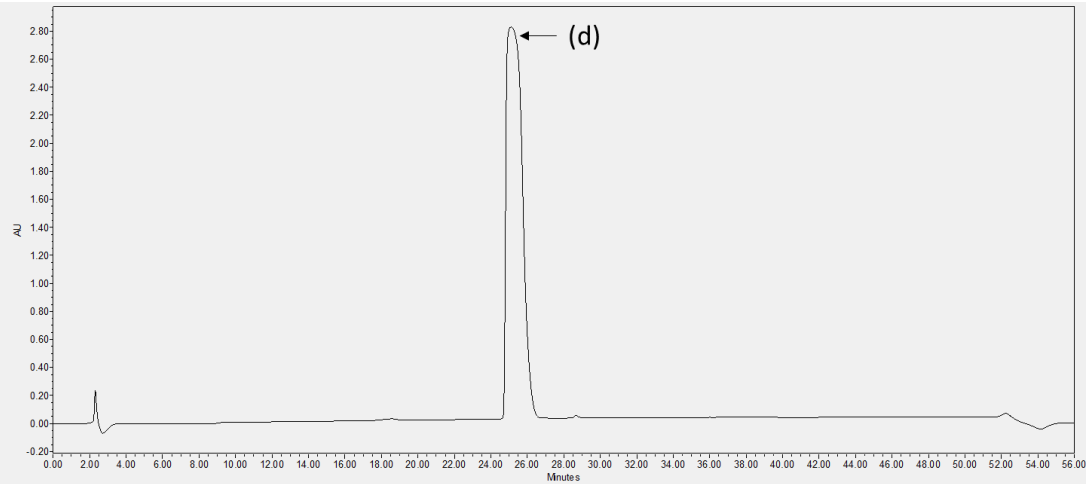


Supplementary Material

Figure S1. The RP-HPLC chromatograms of (a) temporin-PKE, (b) temporin-PKE-2K, (c) temporin-PKE-K₁₂, (d) temporin-PKE-3K, (e) temporin-PKE-4K, (f) temporin-PKE-i and (g) temporin-PKE-3i. The elution peak of each peptide is indicated by an arrow.





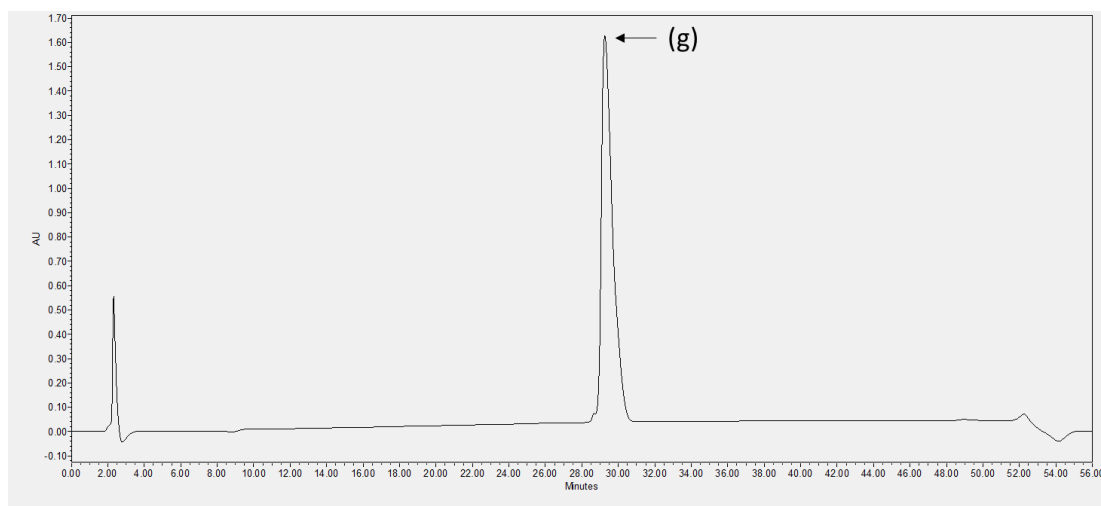


Figure S2. The mass spectra of (a) temporin-PKE, (b) temporin-PKE-2K, (c) temporin-PKE-K₁₂, (d) temporin-PKE-3K, (e) temporin-PKE-4K, (f) temporin-PKE-i and (g) temporin-PKE-3i obtained from MALDI-TOF MS. The observed $[M+H]^+$ ions and the sodium adduct (+Na) and potassium adduct (+K) ions are indicated by arrows.

