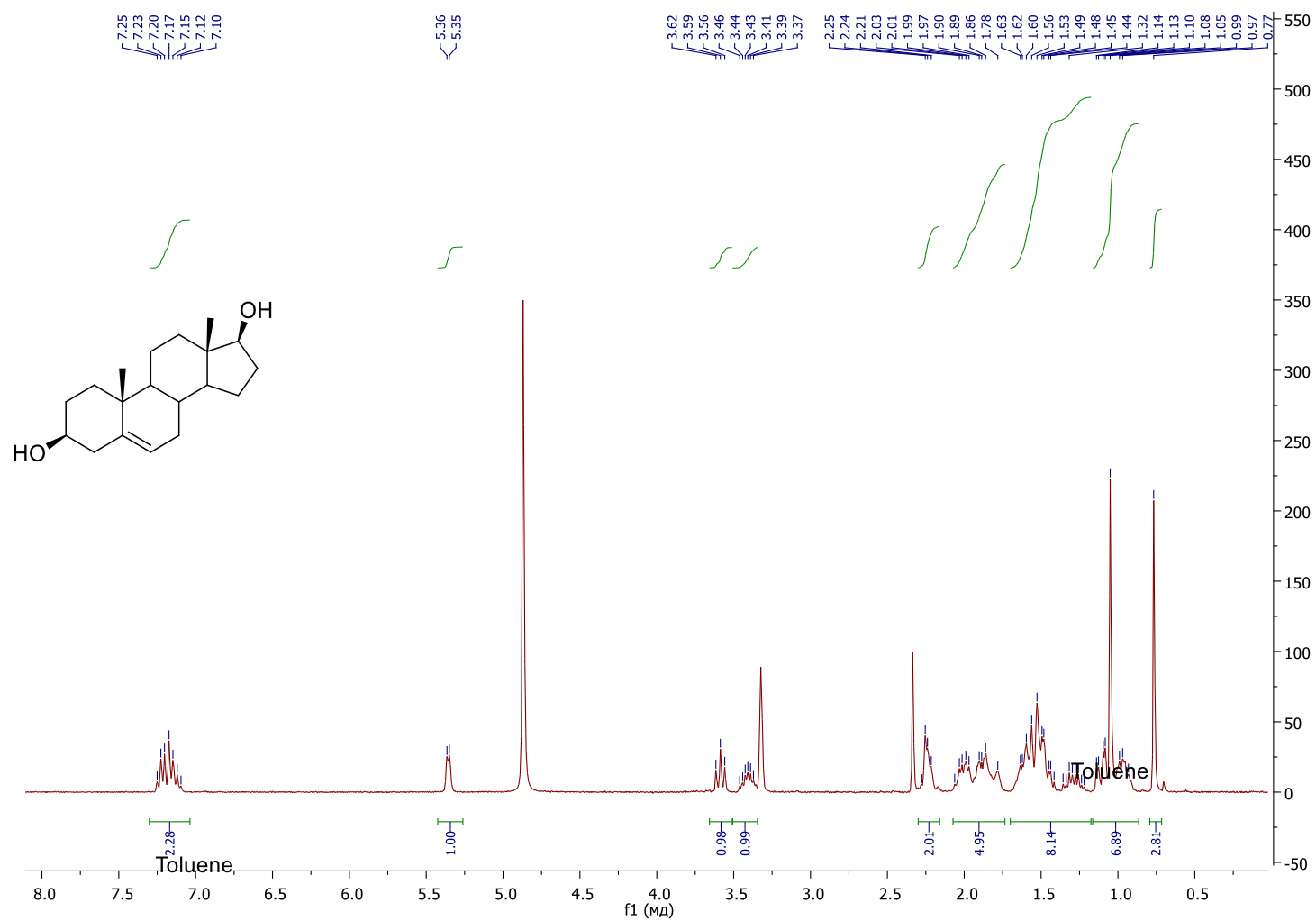


Table S1. Crystal data and details of X-ray analysis.

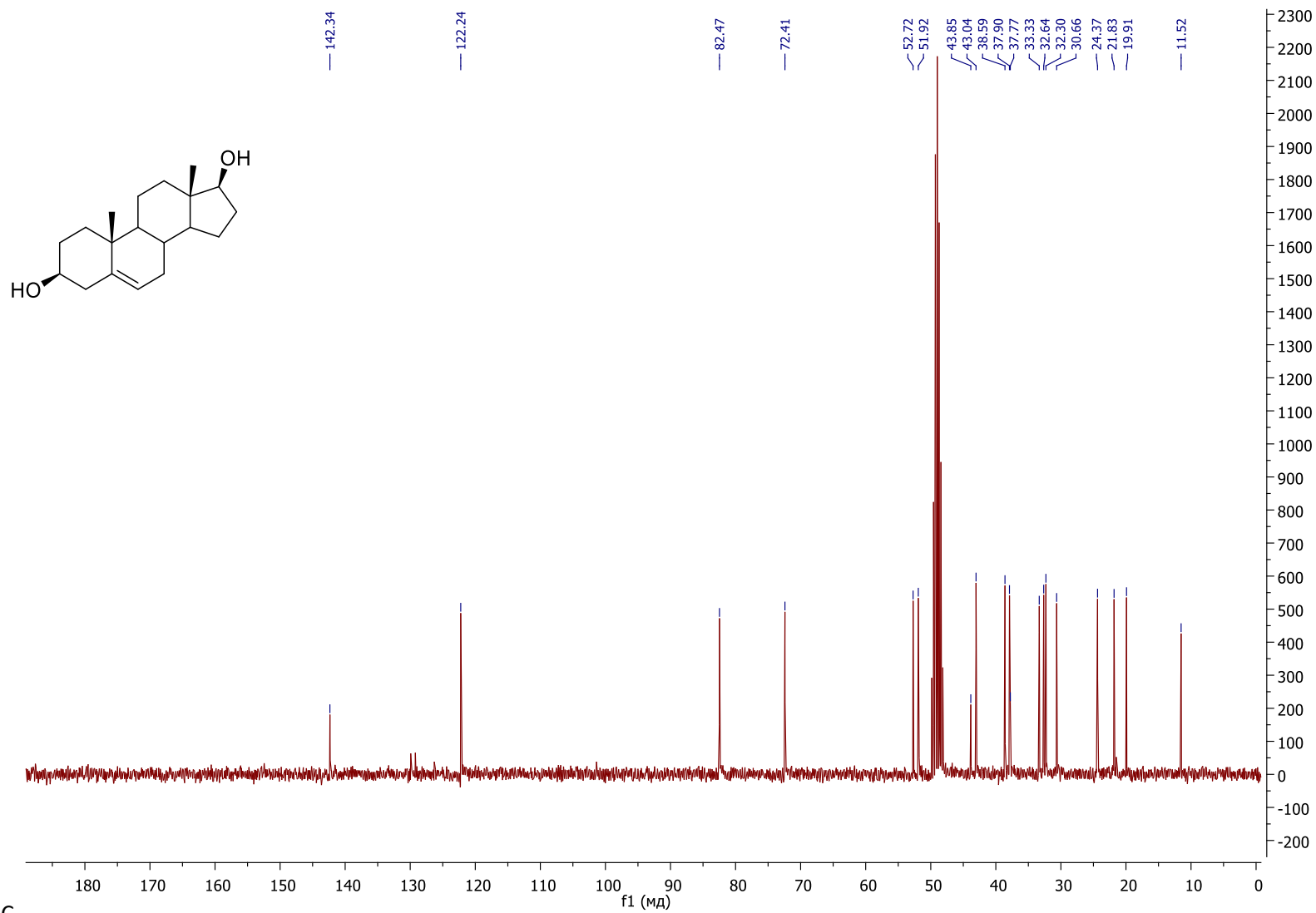
	2	3d
Formula	C ₂₀ H ₃₄ O ₃	C ₂₀ H ₃₀ O ₄ S ₁
<i>F</i> _w	322.47	366.50
colour, habit	colourless, needle	colourless, prism
cryst size (mm)	0.20×0.03×0.02	0.25×0.25×0.20
temperature (K)	100	200
crystal system	orthorhombic	orthorhombic
space group	<i>P</i> 2 ₁ 2 ₁ 2 ₁	<i>P</i> 2 ₁ 2 ₁ 2 ₁
<i>a</i> (Å)	9.1865(5)	10.9534(3)
<i>b</i> (Å)	16.3097(8)	11.2324(3)
<i>c</i> (Å)	23.7715(12)	15.4057(4)
β (deg)	90	90
<i>V</i> (Å ³)	3561.7(3)	1895.41(9)
<i>Z</i>	8	4
<i>D</i> _c (g·cm ⁻³)	1.203	1.284
μ (mm ⁻¹)	0.078	0.192
<i>F</i> (000)	1424	792
θ range (deg)	2.12 to 26.98	2.24 to 28.00
refln collcd	58491	27405
indep reflns / <i>R</i> _{int}	7771 / 0.0536	4563 / 0.0299
reflns <i>I</i> >2 σ (<i>I</i>)	7080	4206
No of param	439	346
GooF on <i>F</i> ²	1.111	1.039
<i>R</i> ₁ (<i>I</i> >2 σ (<i>I</i>))	0.0550	0.0348
<i>wR</i> ₂ (all data)	0.1316	0.0865
Flack parameter	—	0.00(2)
largest diff peak / hole (e·Å ⁻³)	0.38 / -0.29	0.22 / -0.27

^1H and ^{13}C spectra for the synthesized compounds

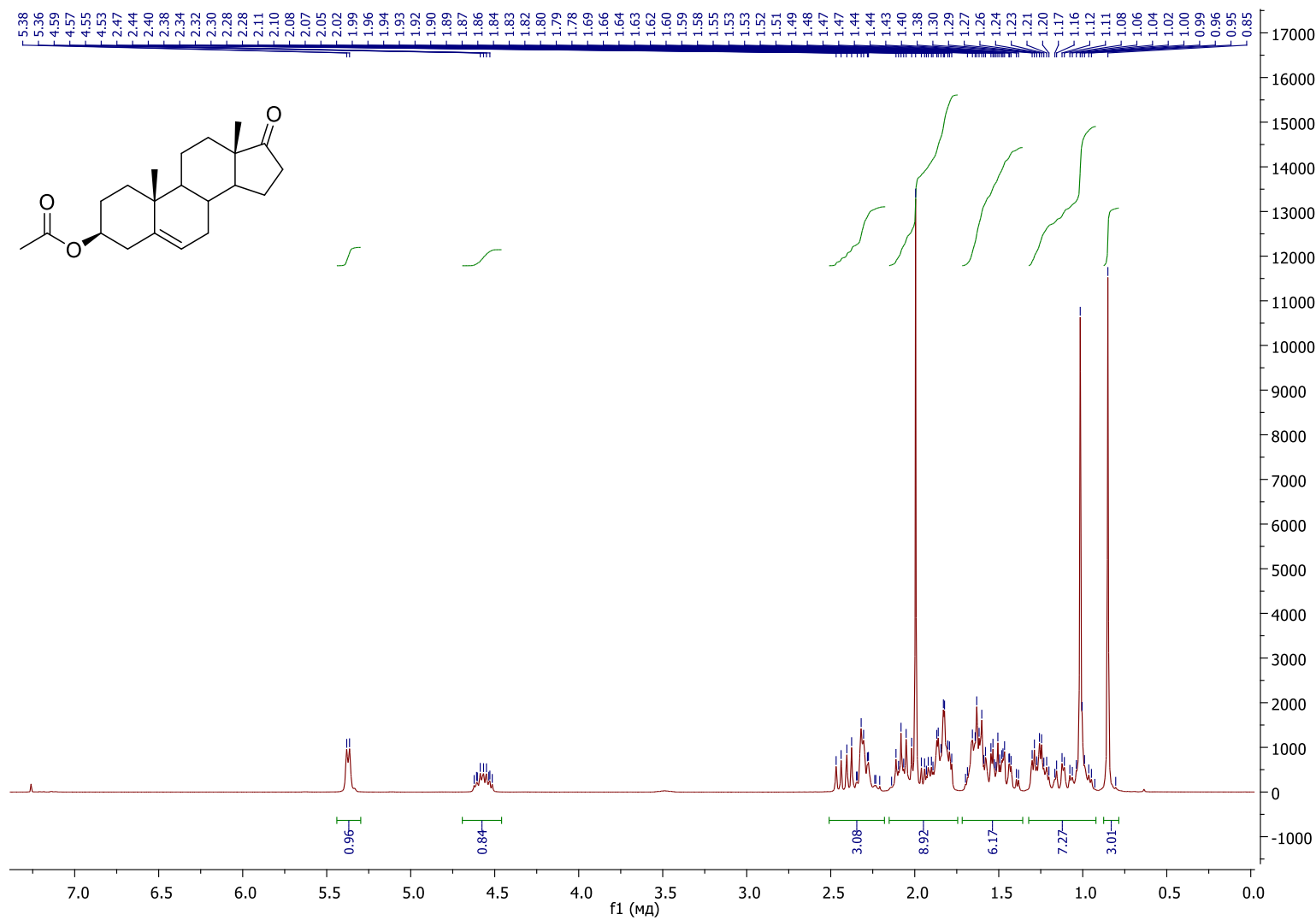
2 ^1H



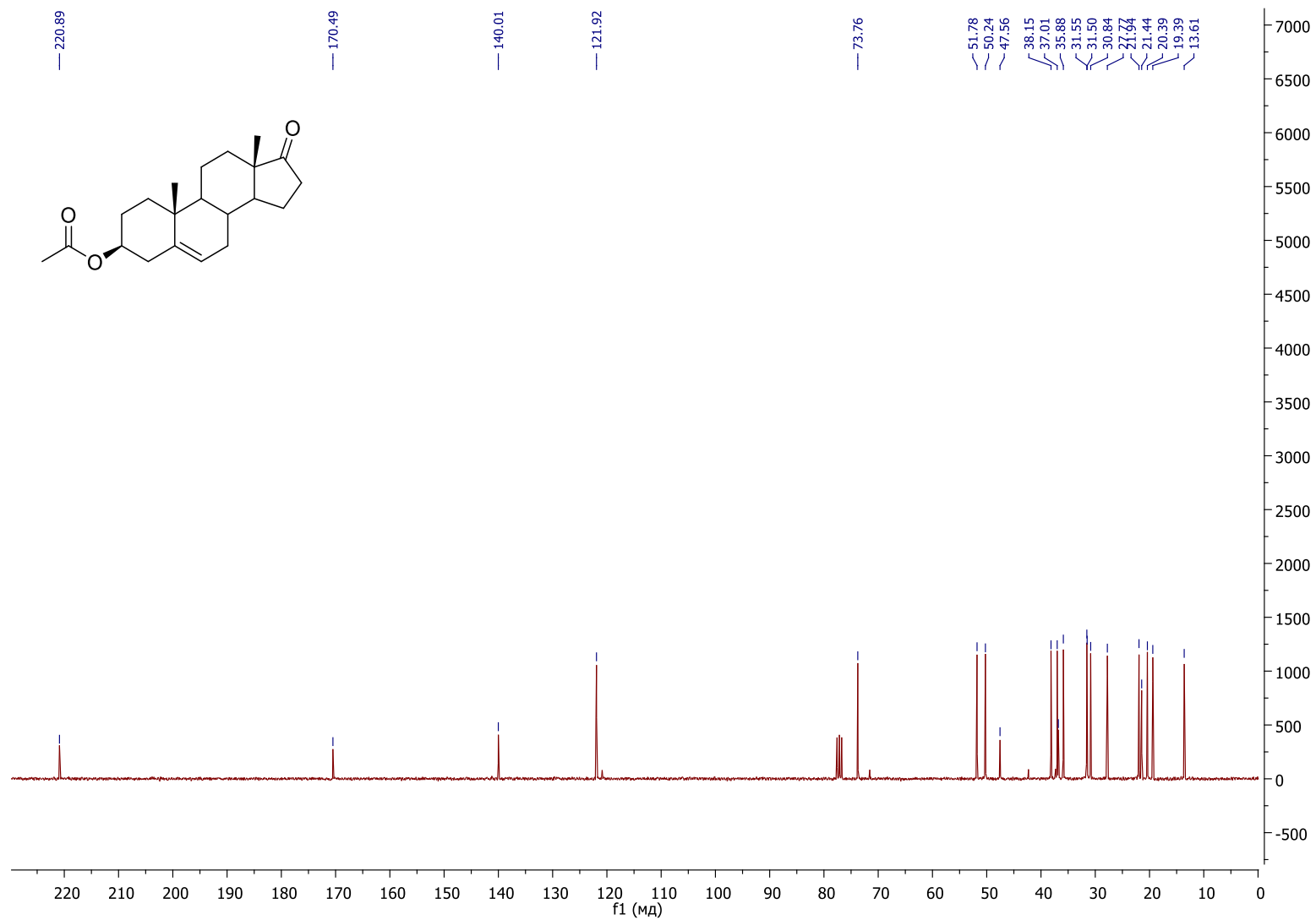
2 ¹³C



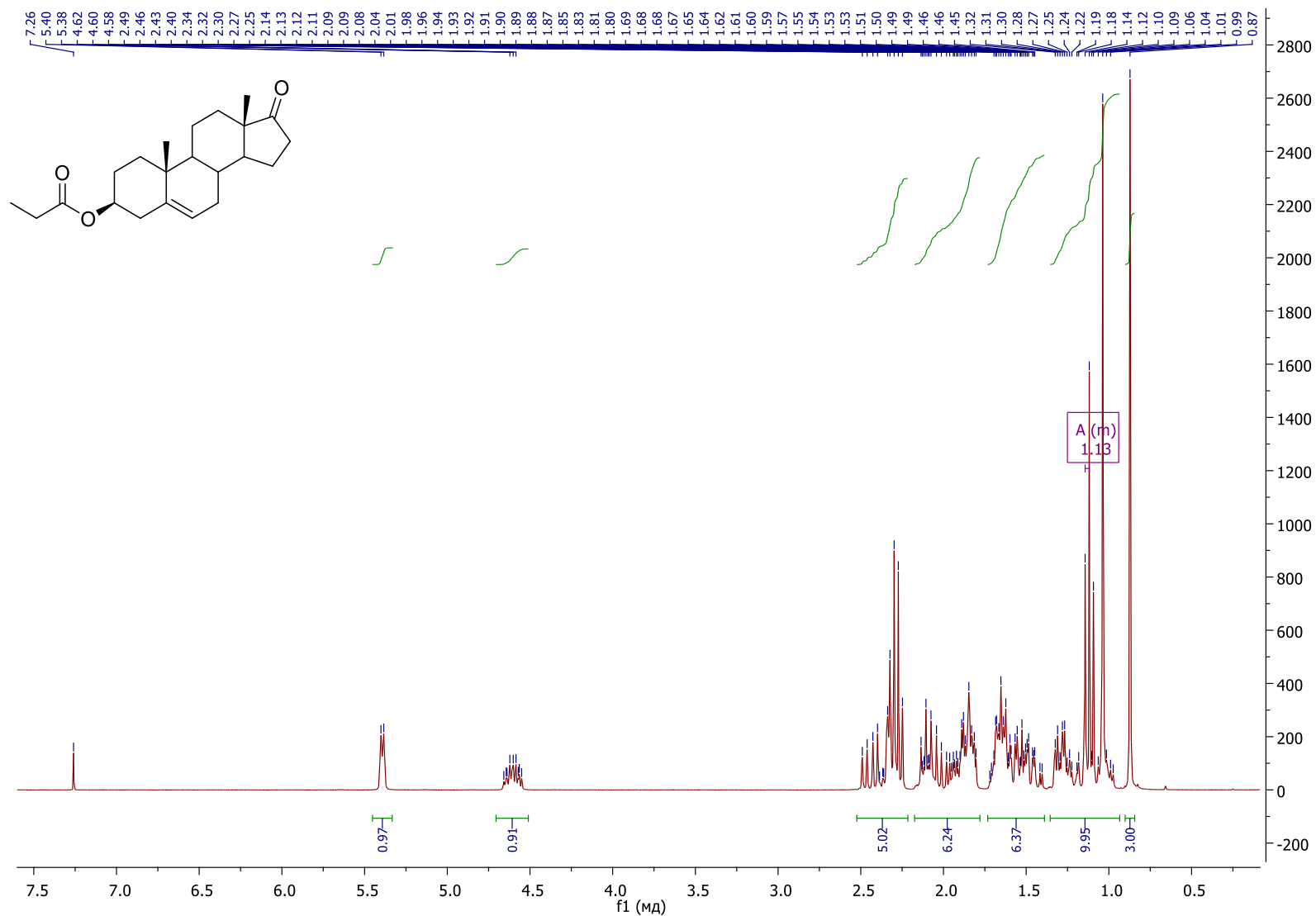
3a ¹H



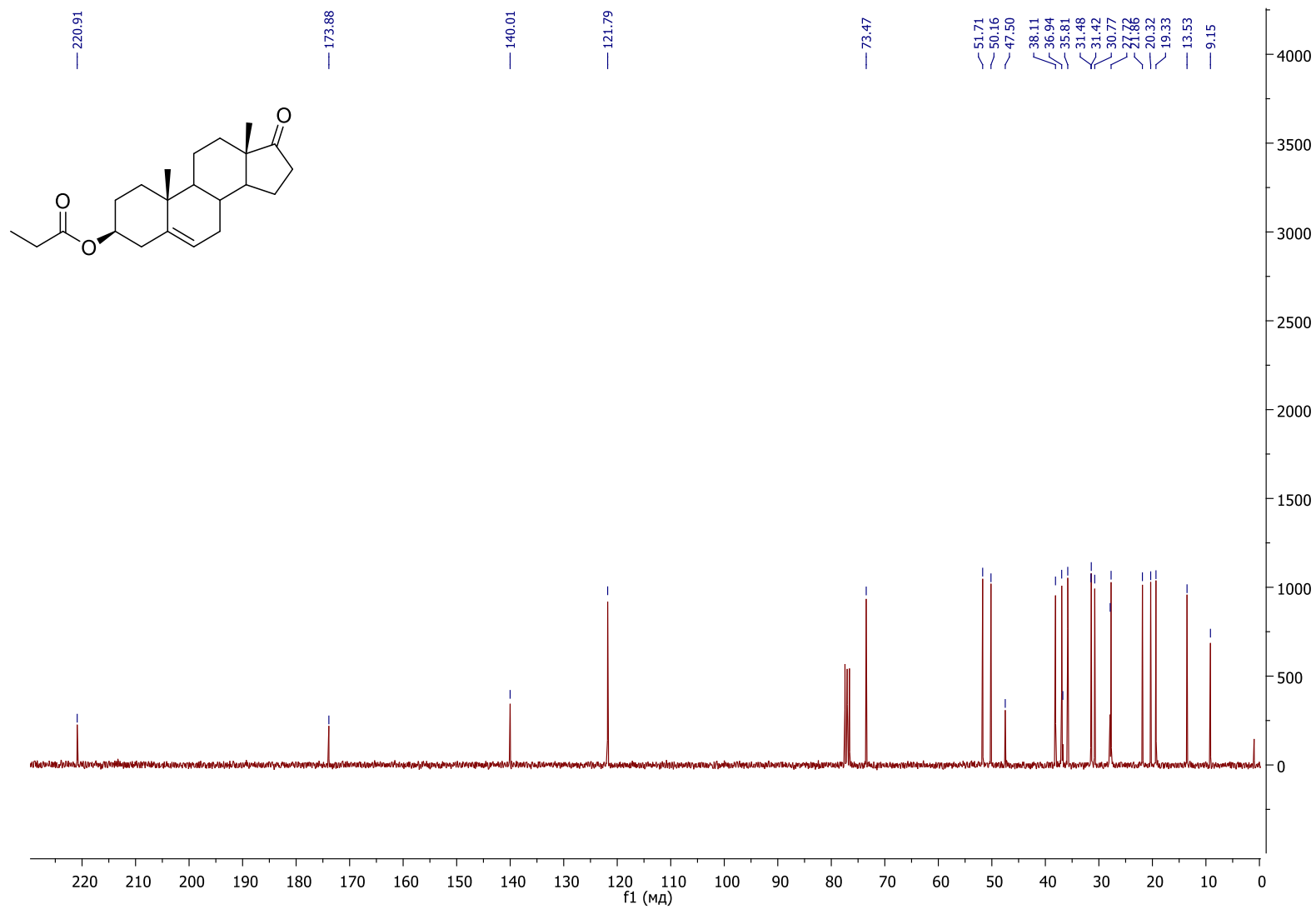
3a 13C



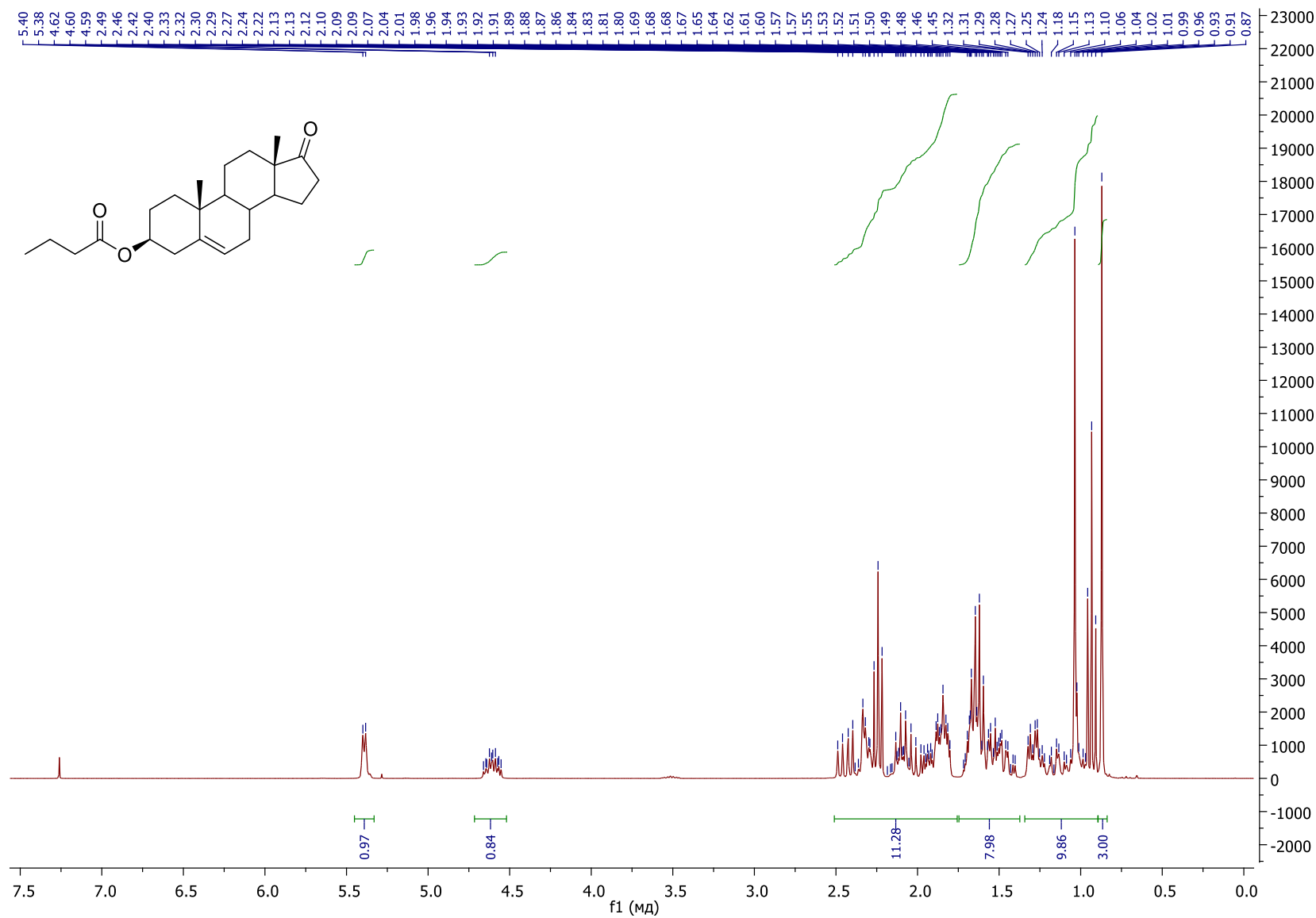
3b ¹H



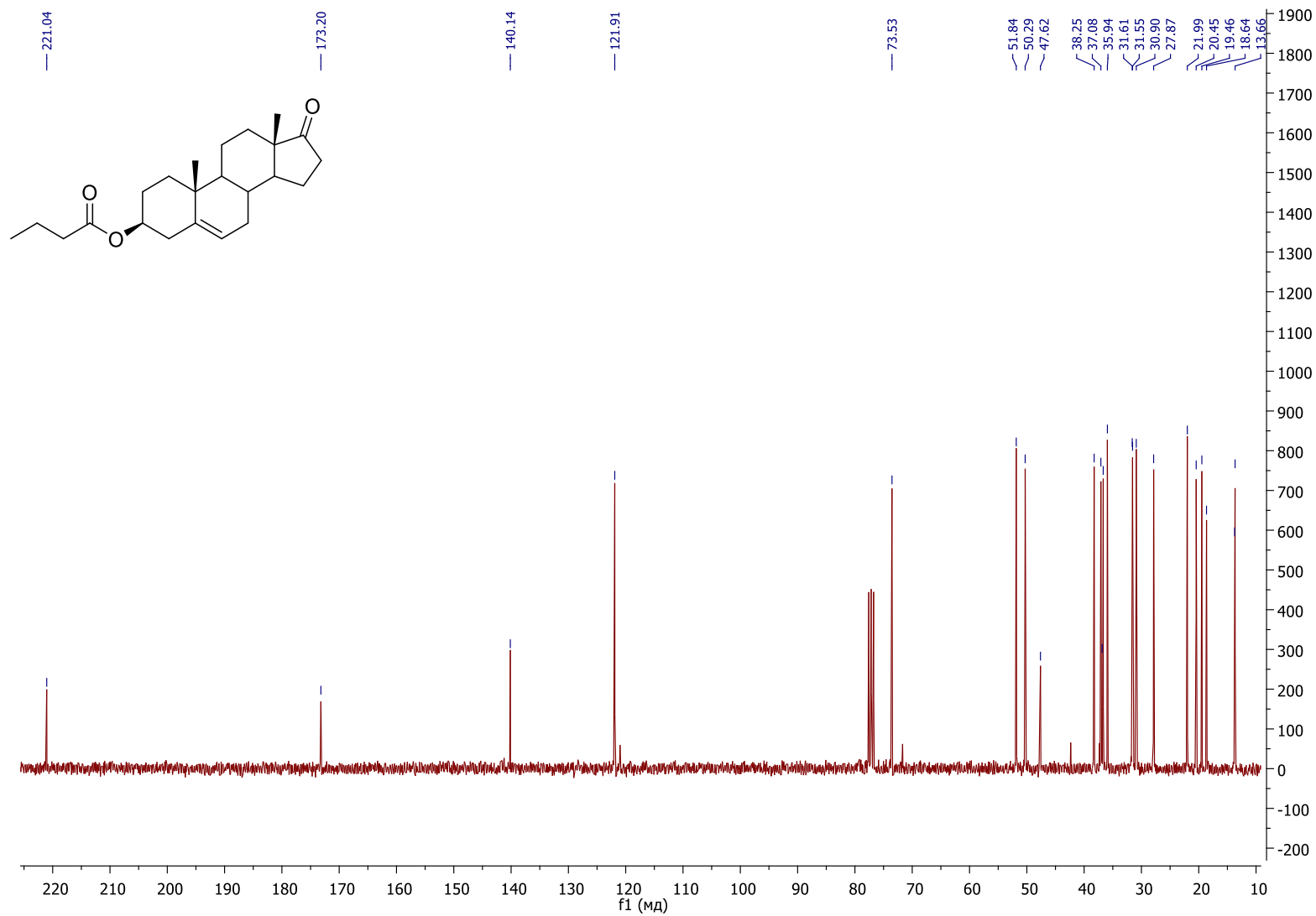
3b ¹³C



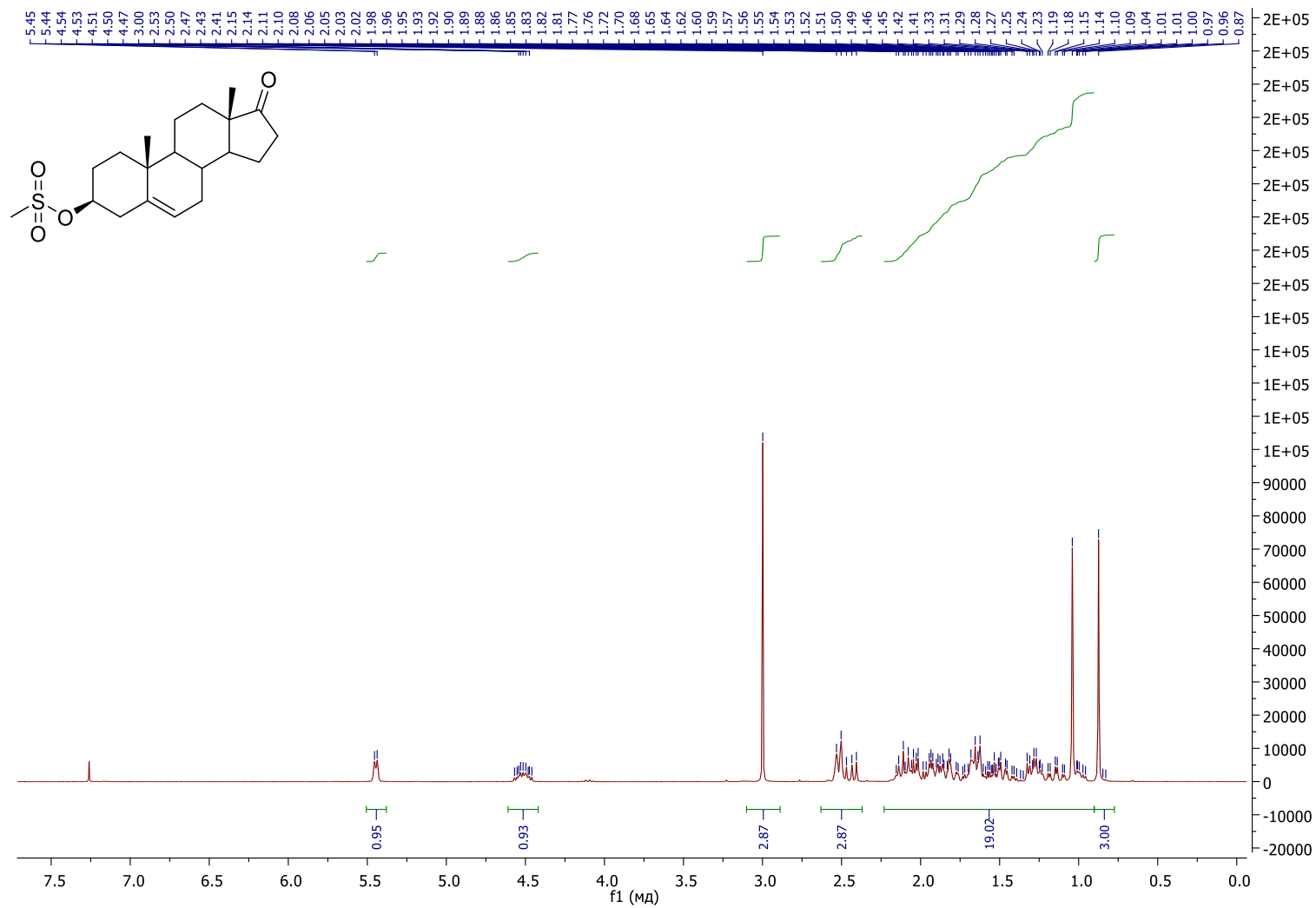
3c 1H



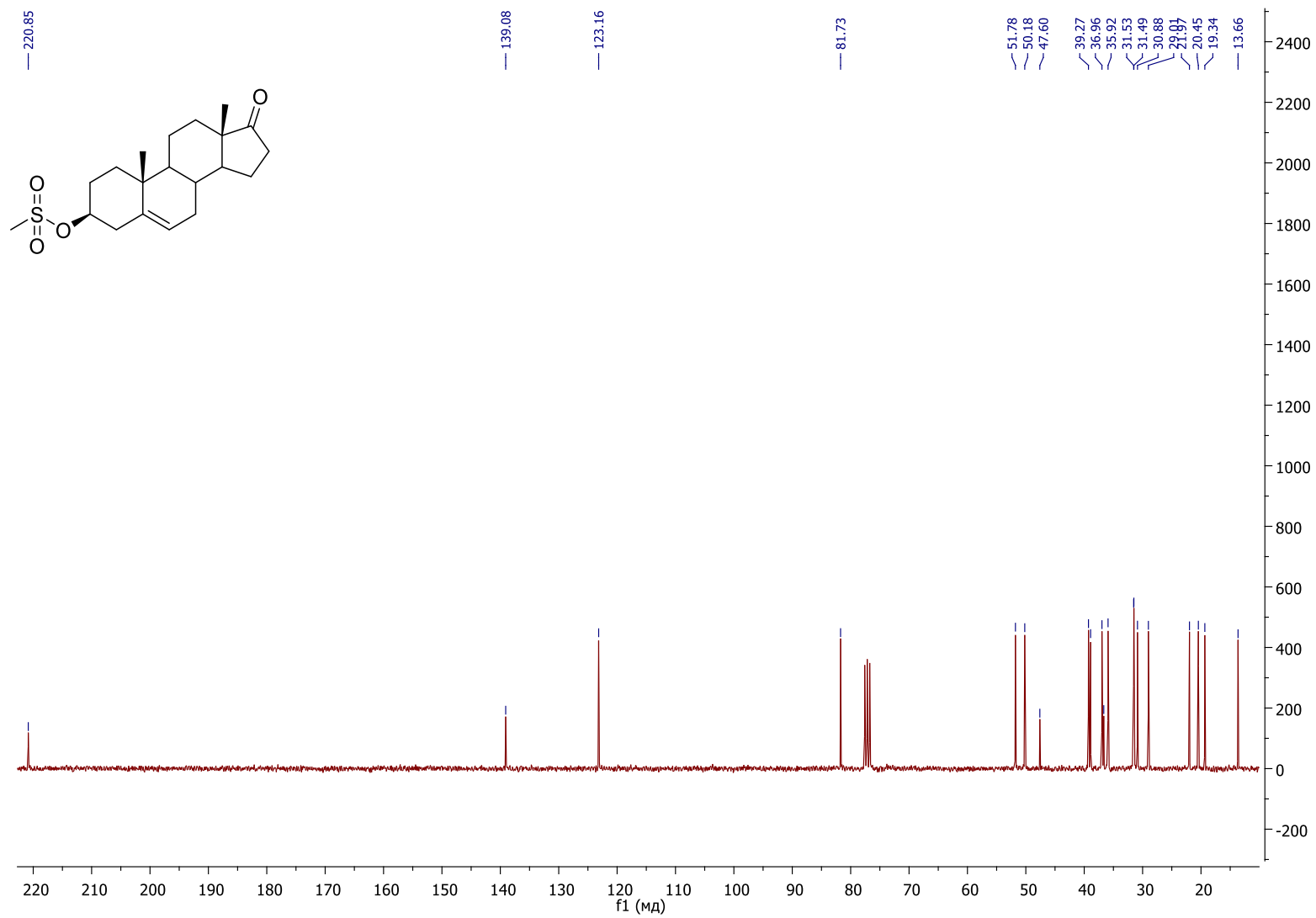
3c ¹³C



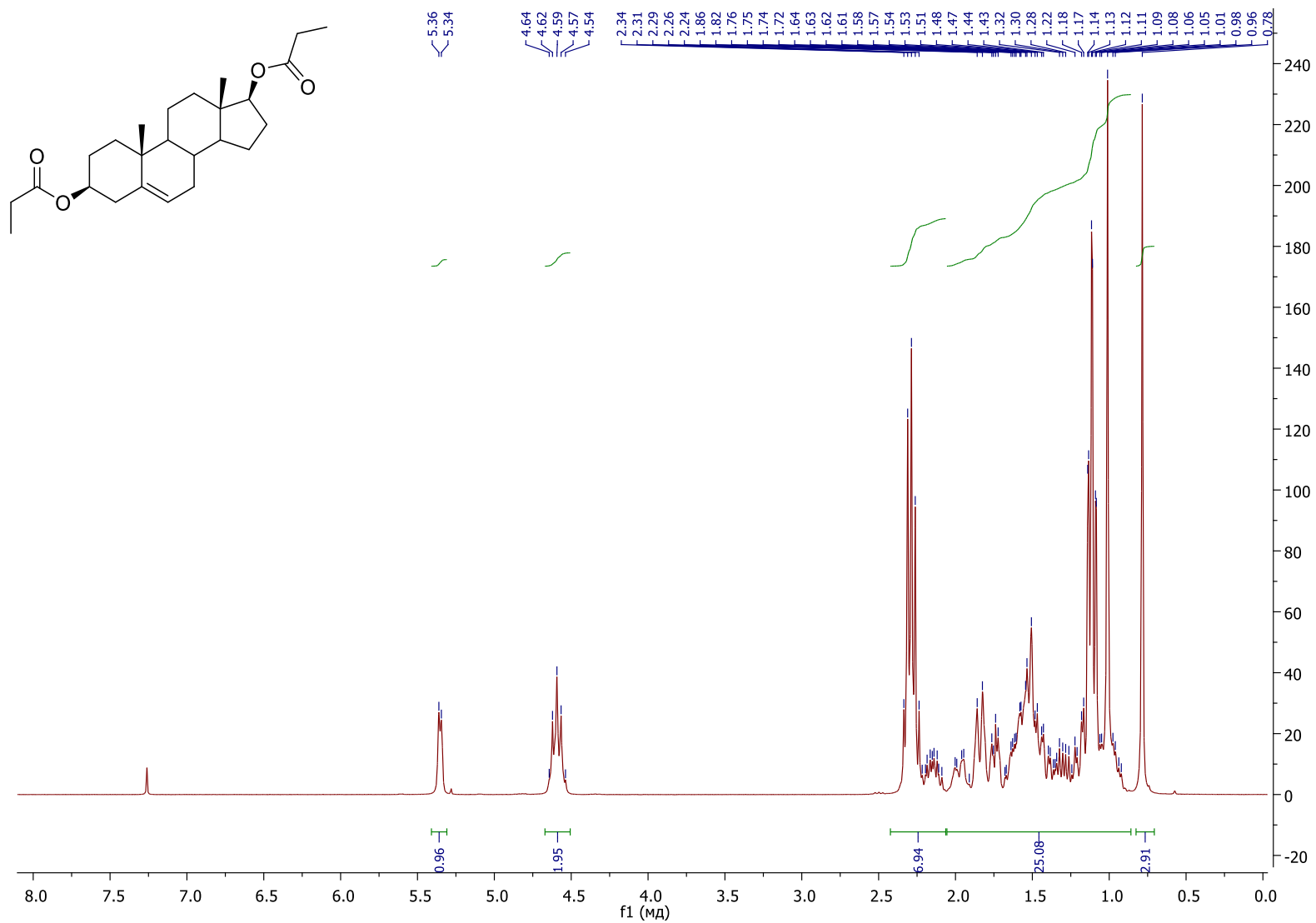
3d ¹H



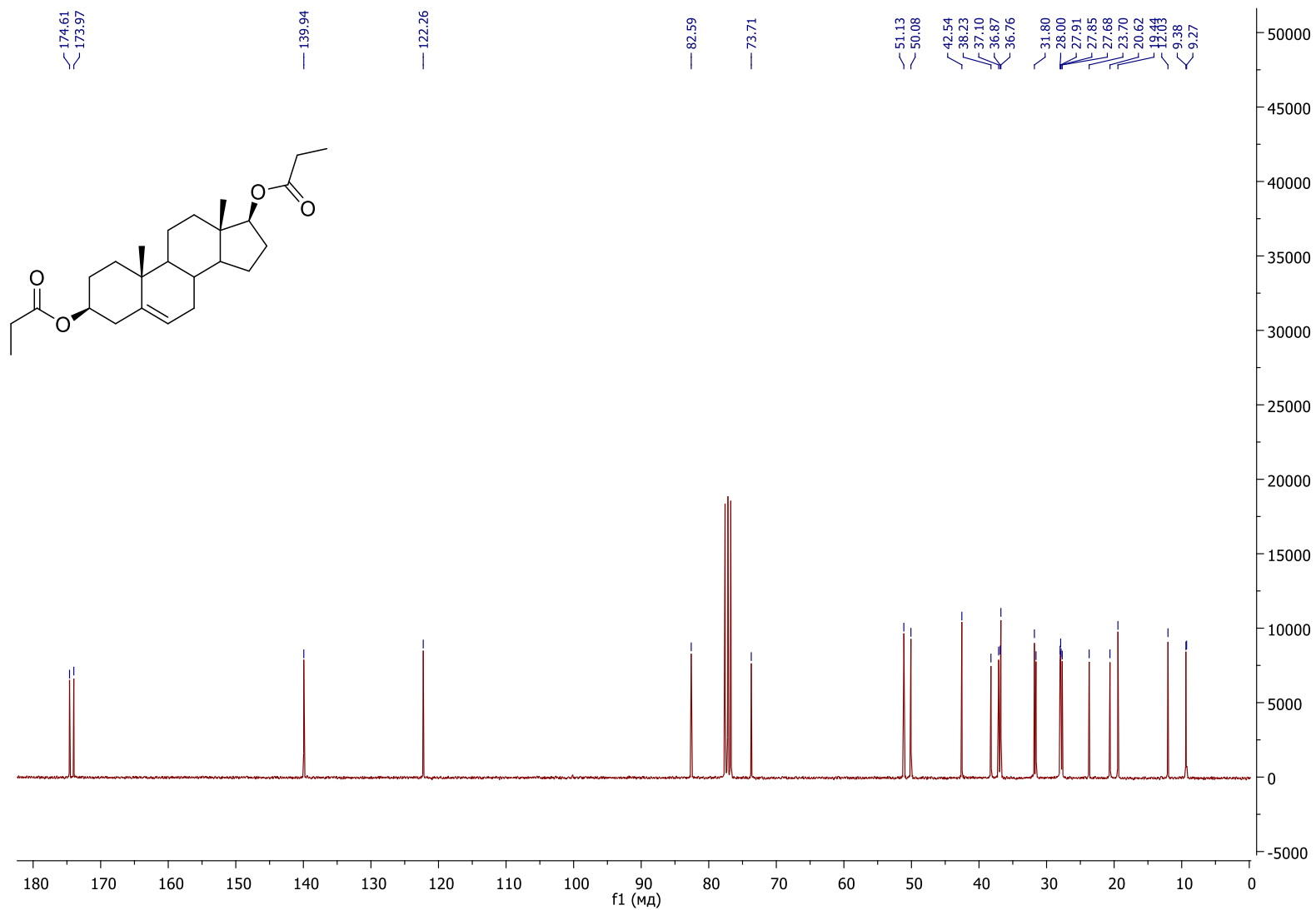
3d 13C



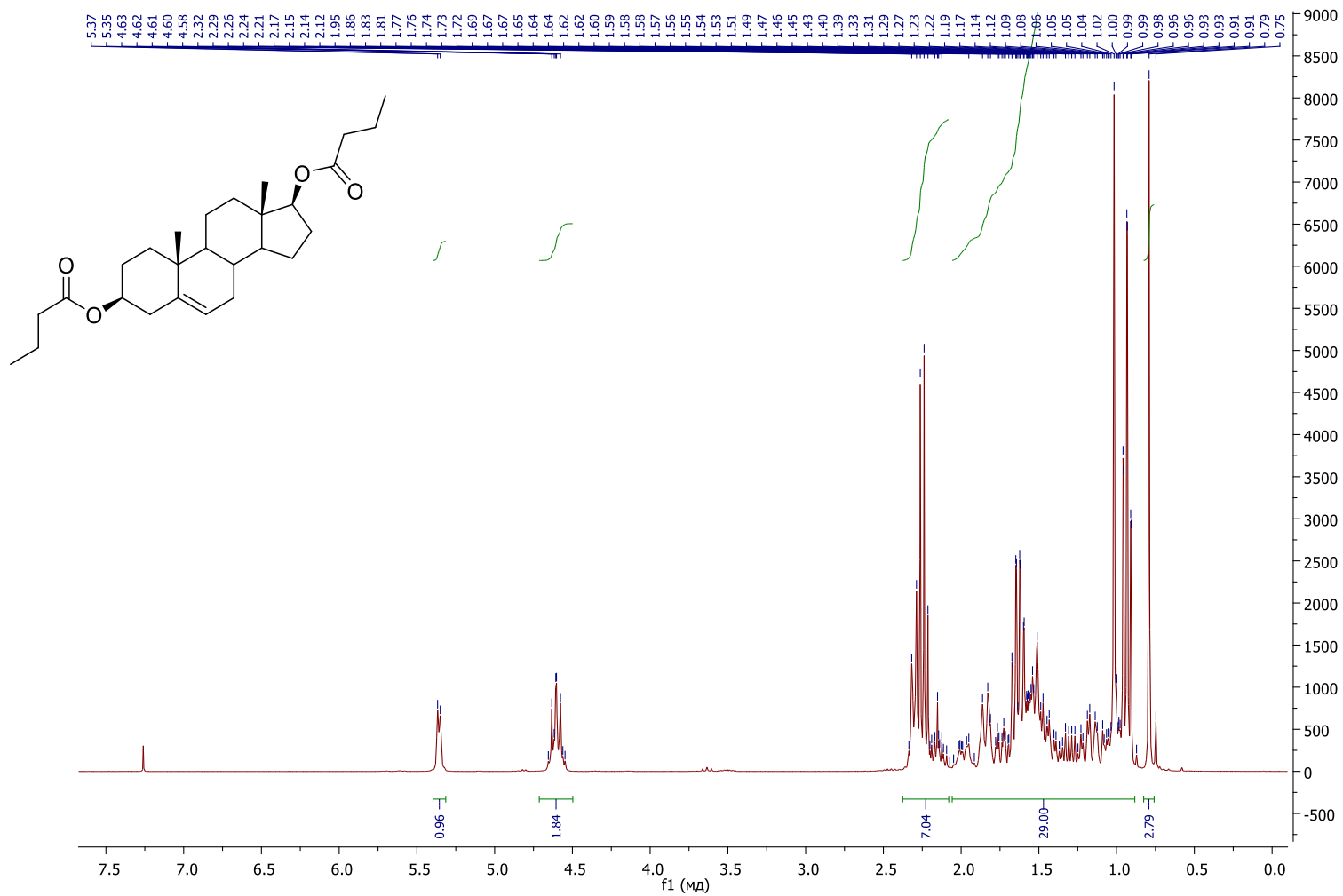
4b ¹H



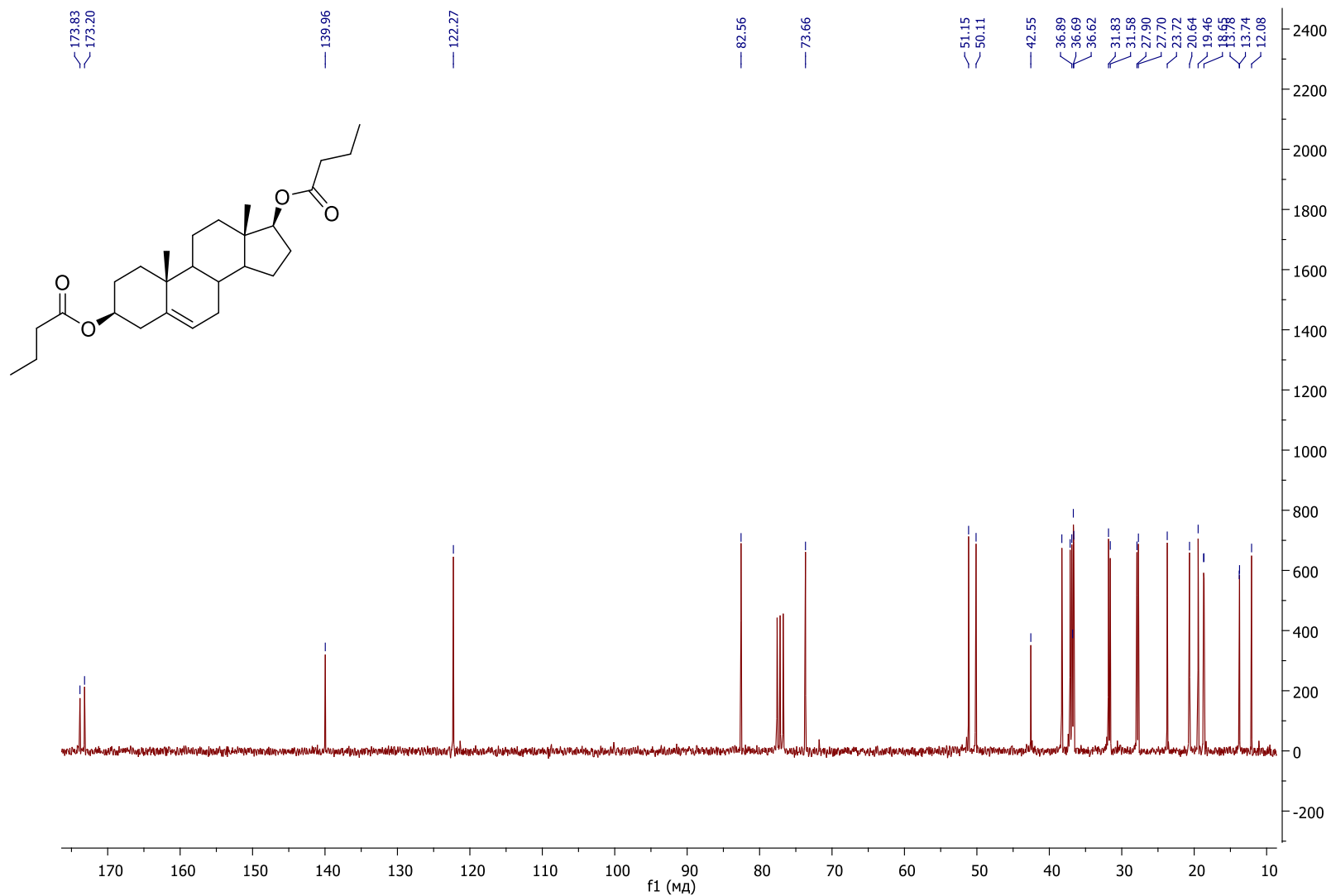
4b 13C



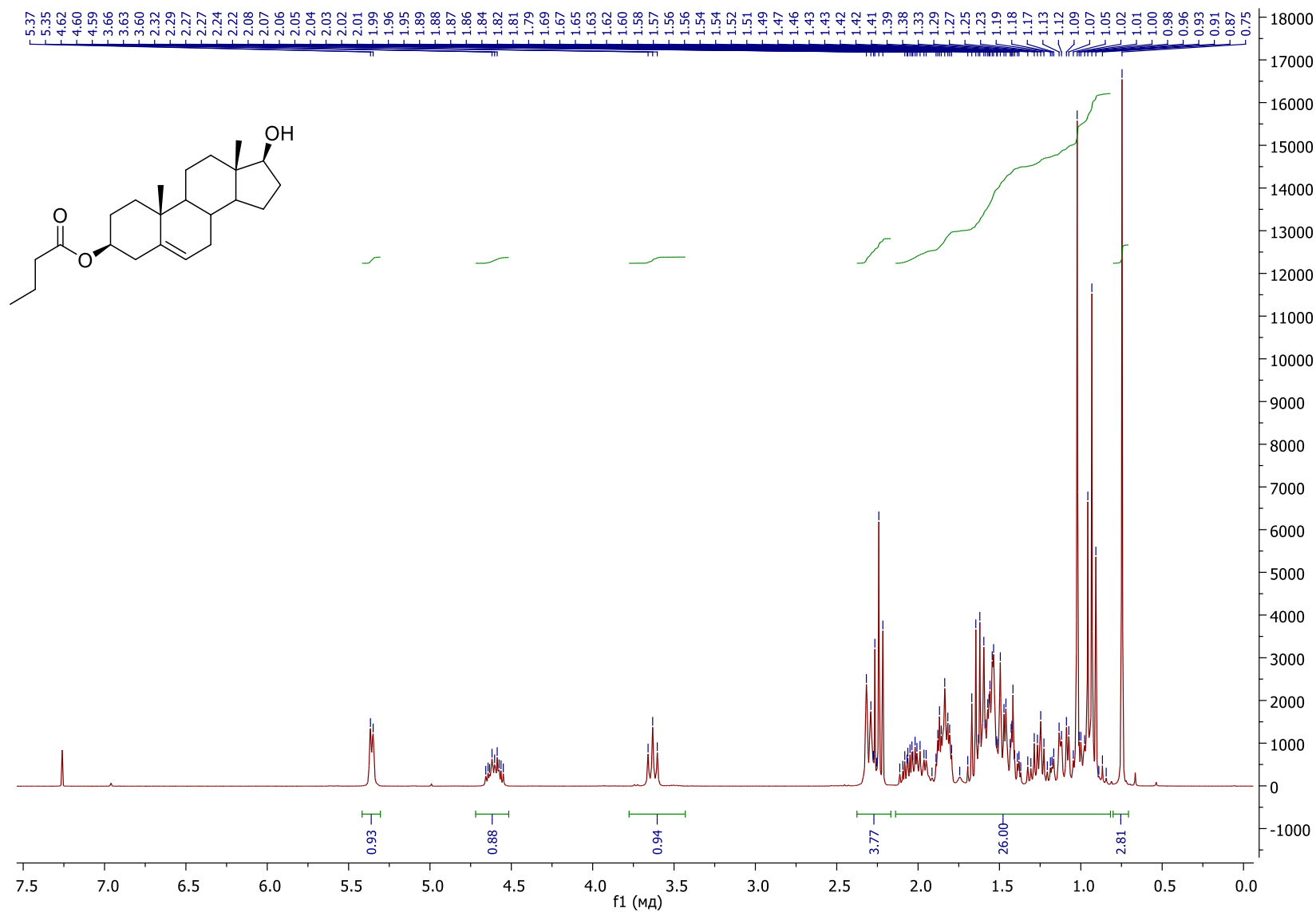
4c ¹H



4c ¹³C



5 1H



5 13C

