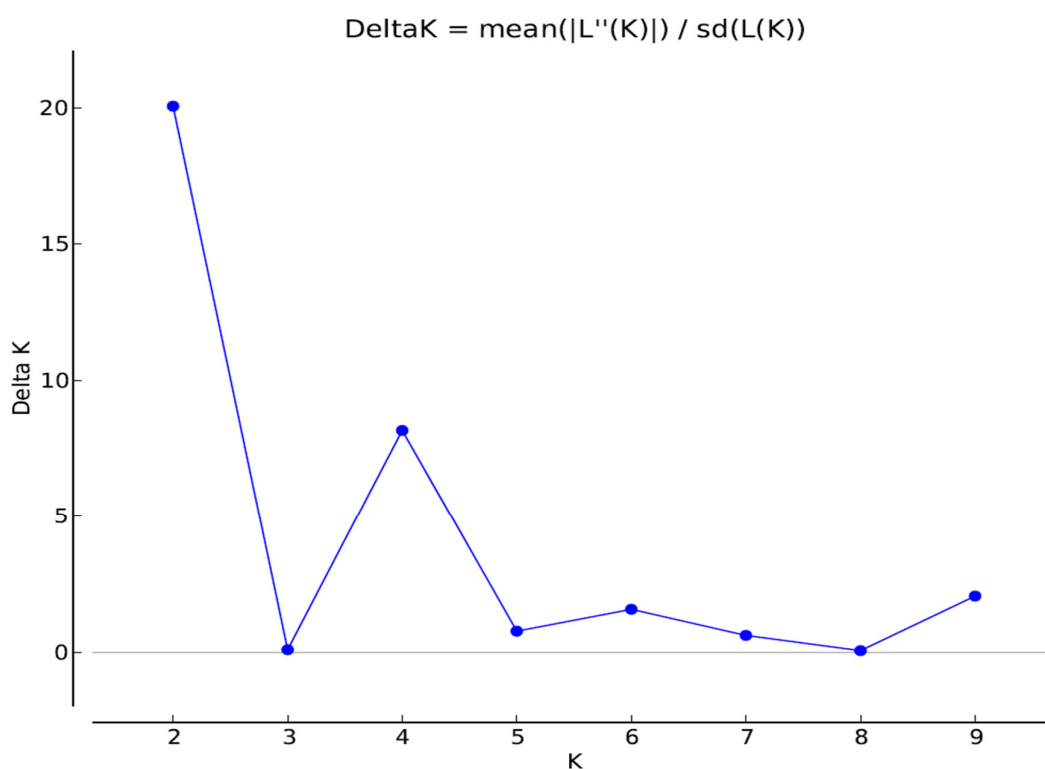


# Genotyping-By-Sequencing Defines Genetic Structure within The “Acquaviva” Red Onion Landrace

## 1. Supplementary Data

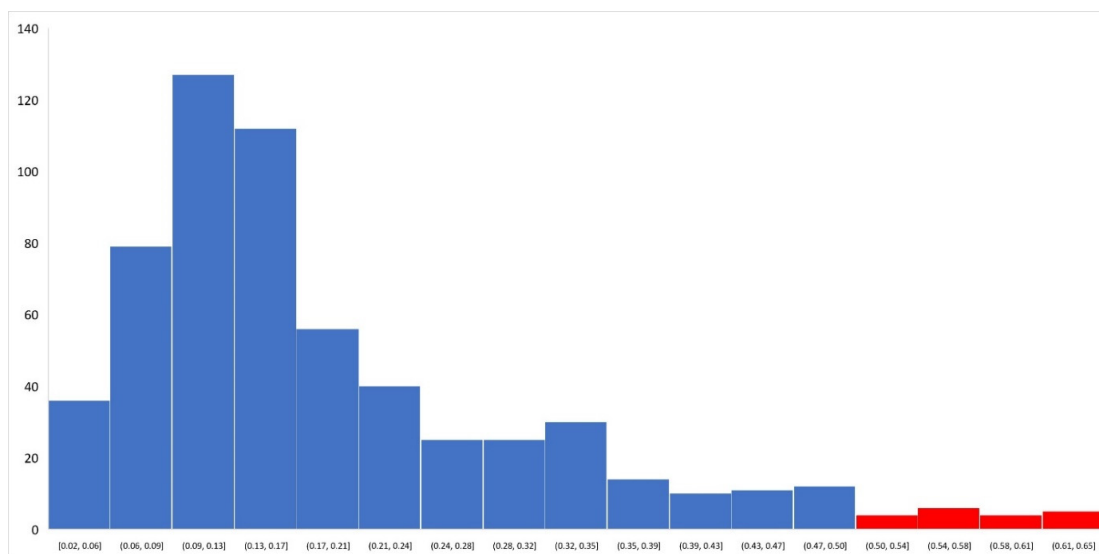
The vcf file analyzed in this study was uploaded in the FigShare repository [<https://www.doi.org/10.6084/m9.figshare.20301198>]

## 2. Supplementary Figures and Tables



**Figure S1.** Evanno's  $\Delta K$  plot associated with STRUCTURE genetic analysis .

## 2.1. Supplementary Figures



**Figure S2.** Frequency distribution of the 596 private alleles distinguishing the ARO K1 population from the M population. Red bins highlight the distribution of private alleles with frequency above 0.5.

## 2.2. Supplementary Table

**Table S1.** Private alleles distinguishing the ARO\_K1 populations from the M population. Only alleles with frequency above 0.5 are shown. Information on the SNP locus name, nucleotide and frequency are reported.

| Locus Name | Nucleotide | Frequency |
|------------|------------|-----------|
| TP261963   | A          | 0.65      |
| TP118650   | T          | 0.64      |
| TP207779   | A          | 0.64      |
| TP167796   | A          | 0.64      |
| TP211157   | T          | 0.63      |
| TP16934    | A          | 0.6       |
| TP307414   | C          | 0.6       |
| TP62851    | A          | 0.6       |
| TP36510    | G          | 0.58      |
| TP105188   | C          | 0.57      |
| TP135073   | T          | 0.57      |
| TP284597   | C          | 0.57      |
| TP286333   | A          | 0.56      |
| TP22187    | A          | 0.55      |
| TP246647   | T          | 0.54      |
| TP151286   | T          | 0.54      |
| TP108000   | G          | 0.53      |
| TP10765    | A          | 0.52      |
| TP25377    | G          | 0.52      |
| TP144838   | G          | 0.5       |
| TP207208   | G          | 0.5       |
| TP227463   | C          | 0.5       |
| TP261711   | A          | 0.5       |
| TP294654   | A          | 0.5       |
| TP6787     | A          | 0.5       |