

## Supplementary information

### Biological Activities and Chemical Profiles of *Kalanchoe fedtschenkoi* extracts

Jorge L. Mejía-Méndez <sup>1,\*</sup>, Horacio Bach <sup>2</sup>, Ana C. Lorenzo-Leal <sup>2</sup>, Diego E. Navarro-López <sup>3</sup>, Edgar R. López-Mena <sup>3</sup>, Luis Ricardo Hernández <sup>1</sup>, and Eugenio Sánchez-Arreola <sup>1,\*</sup>

<sup>1</sup> Laboratory in Phytochemistry Research, Chemical Biological Sciences Department, Universidad de las Américas Puebla, Ex Hacienda Sta. Catarina Mártir S/N, San Andres Cholula 72810, Mexico; luisr.hernandez@udlap.mx

<sup>2</sup> Division of Infectious Diseases, Faculty of Medicine, University of British Columbia, Vancouver, BC V6G 3Z6, Canada; hbach@mail.ubc.ca (H.B.); anacecylole@gmail.com (A.C.L.-L.)

<sup>3</sup> Tecnológico de Monterrey, Escuela de Ingeniería y Ciencias, Campus Guadalajara, Av. Gral. Ramón Corona No 2514, Colonia Nuevo México, Zapopan, 45121 Mexico; diegonl@tec.mx (D.E.N.-L.); edgarl@tec.mx (E.R.L.-M.)

\* Correspondence: jorge.mejiamz@udlap.mx (J.L.M.-M.); eugenio.sanchez@udlap.mx (E.S.-A.)

Figure S1. GC/MS chromatogram of hexane extract from *K. fedtschenkoi*

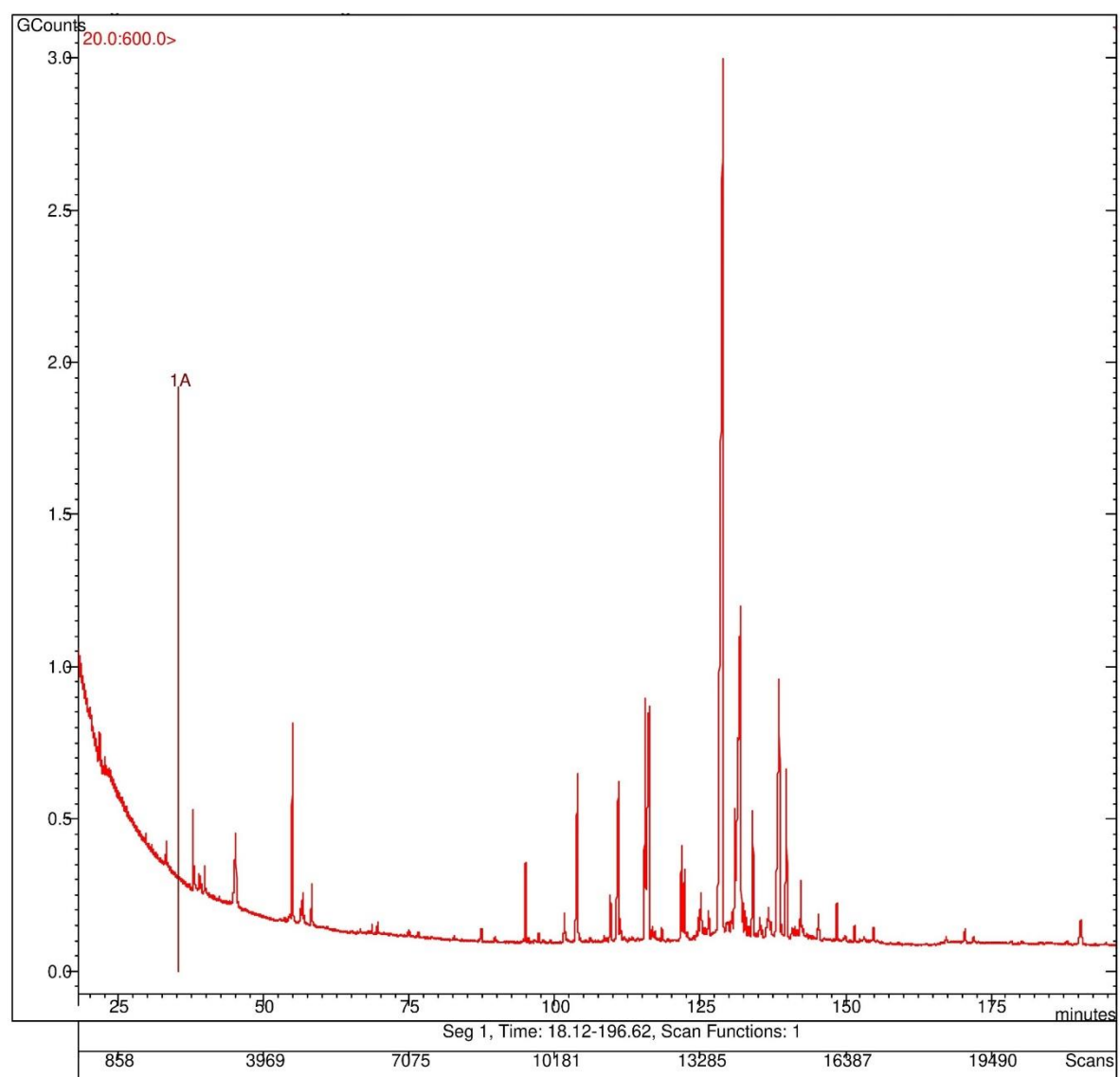


Figure S2. GC/MS chromatogram of chloroform extract from *K. fedtschenkoi*.

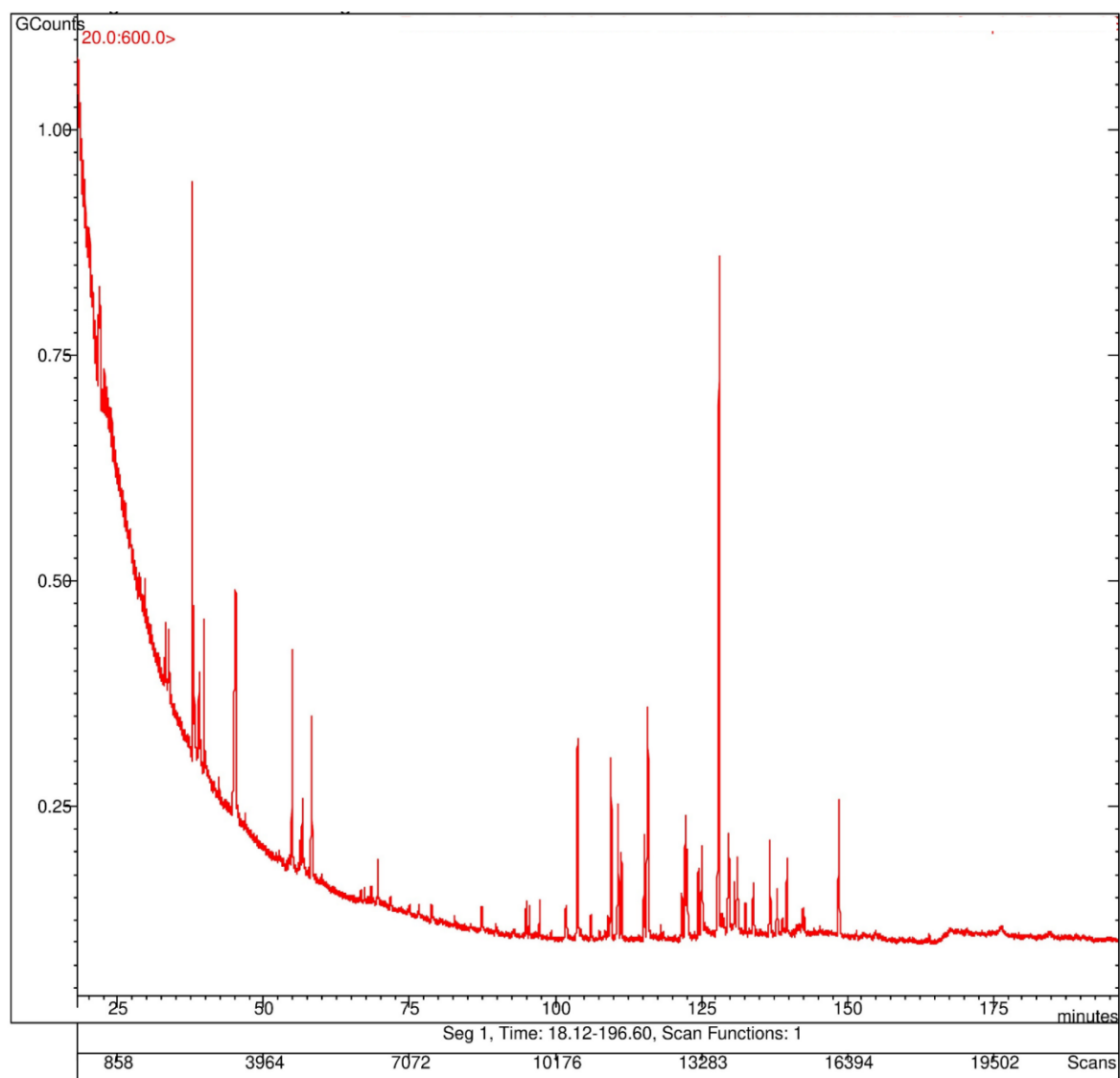


Figure S3. HPLC chromatogram of methanol extract from *K. fedtschenkoi*.

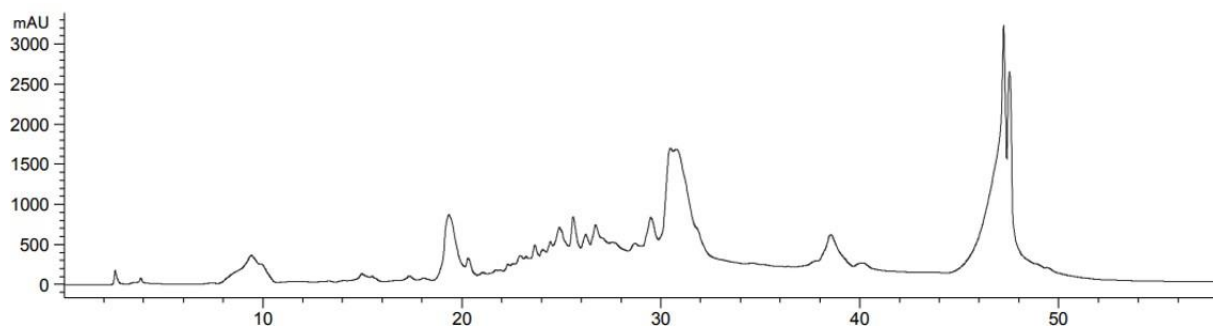


Figure S4. Calibration curve of quercetin used as standard solution.

