

Supplementary Materials:

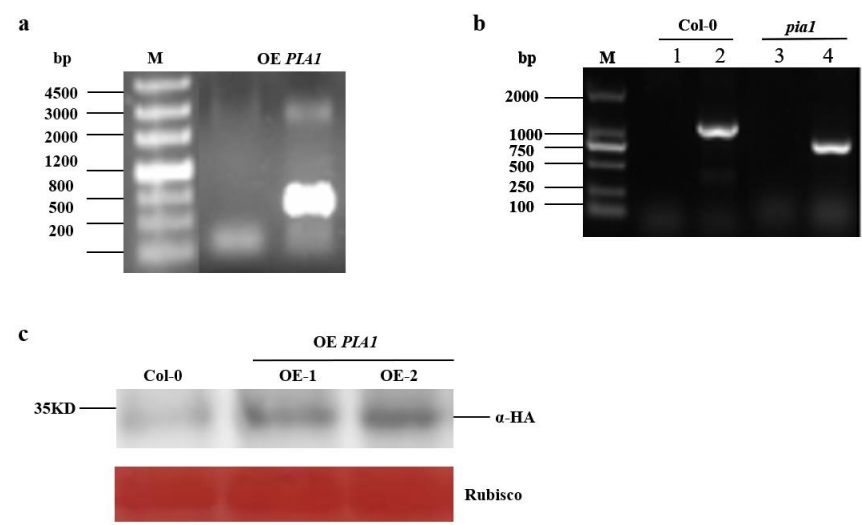


Figure S1. OE *PIA1* and *pia1* mutants identified by PCR and Western blot. **(a)** PCR identification of *PIA1*. **(b)** PCR identification of *pia1* mutant. **(c)** Identification of *PIA1* expression.

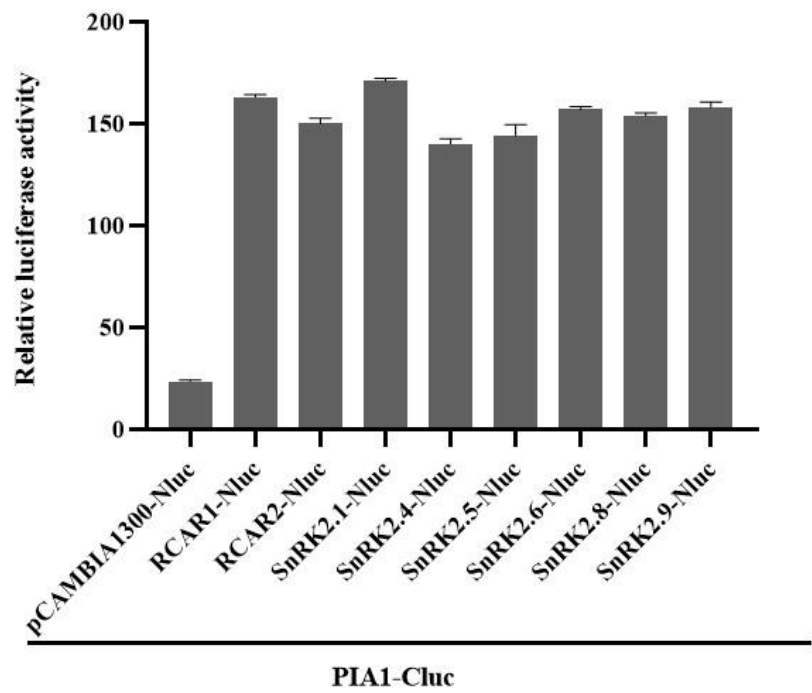


Figure S2. The luciferase activity measurement using a luminometer.

Table S1. Primers information.

Prime name	Primer sequence
<i>pia1</i>	LP: GGCTGCATCAATCAAACAAAC RP: CGGTGTTGCTTCTCAACTCTC BP: ATTTTGCCGATTTCGGAAC
<i>Actin2</i>	FP: CTTGTTCCAGCCCTCGTTTG RP: CAGCGATACCTGAGAACATAGTGG
<i>RD29B</i>	FP: TTCTGACCACACCAAACCCAT RP: CAGCCAGTGCCTCATGTCC
<i>ABI3</i>	FP: CTCCGACGTCAAATGTGGCA RP: CCACATTGCGCCGACGGAGAG
<i>ABI5</i>	FP: CGGGTTTGGATTAGGTTTAG RP: GTAGTAGTAGTAGTAATGGACAGA
<i>ABF4</i>	FP: AACAACTTAGGAGGTGGTGGTC RP: CTTCAGGAGTTCATCCATGTTC
<i>AD-PIA1</i>	FP: GCCATGGAGGCCAGTGAATTCATGGCAGGCAGAGAGA
<i>AD-PIA1</i>	RP: CAGCTCGAGCTCGATGGATCCTCATCTACAATACCTTTCTGAG
<i>Cluc-PIA1</i>	FP: TACGCGTCCCGGGGCGGTACATGGCAGGCAGAGA RP: ACGAAAGCTCTGCAGGTCGACTCATCTACAATACCTTTCT