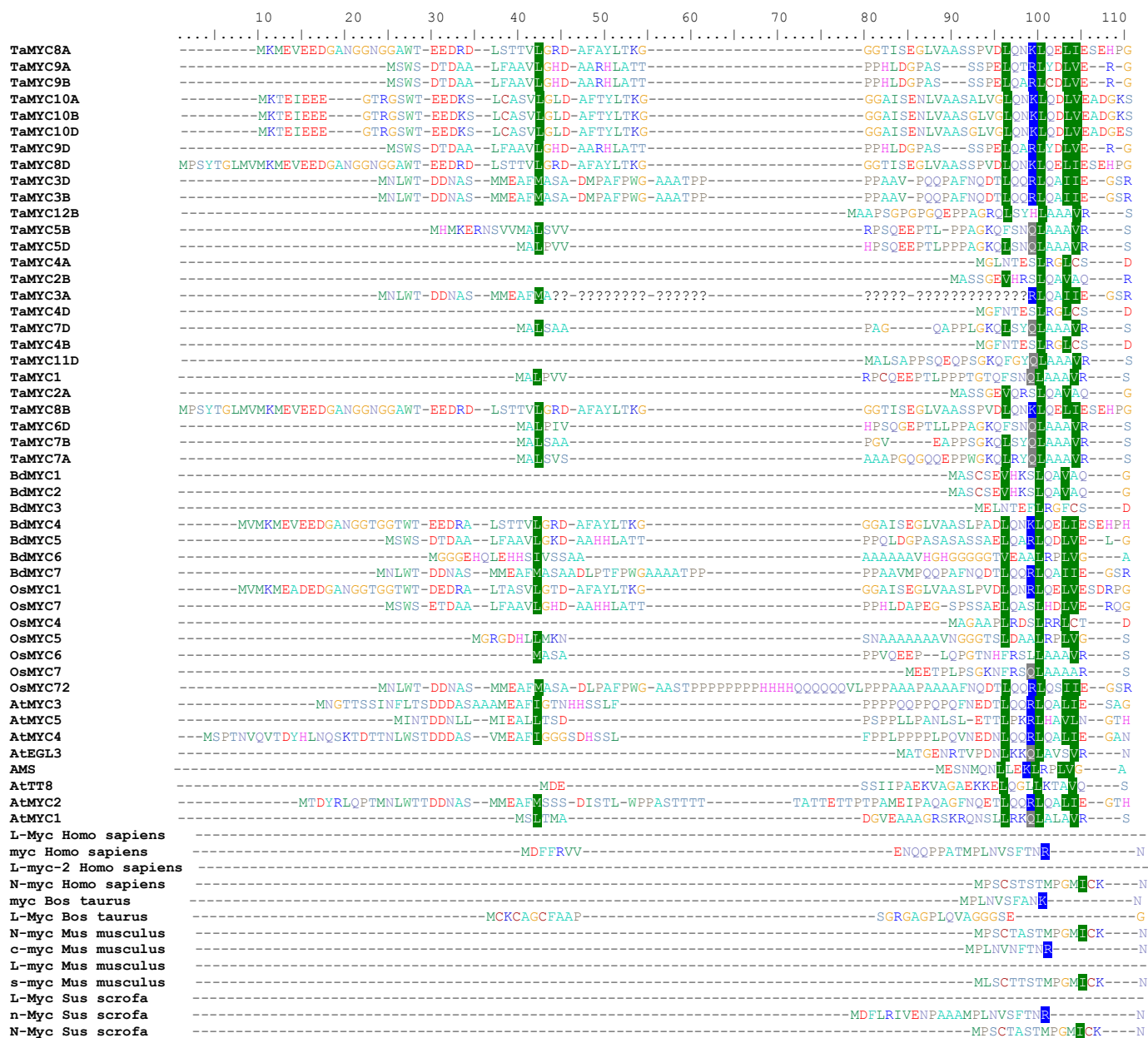


Page 10 of 10



JID

	120	130	140	150	160	170	180	190	200	210	220
TaMYC8A	AGNNVAIFWOLSRTK	S		DLVLGWDGS	CREPND	AEALAAASA		GNDDAQRMKRV	LR	LR	LR
TaMYC9A	GAMTYGIIWQESRAG	AC		VLGWDGH	CRDGP	AEQ		AGTDRSLARKRA	LR	LR	LR
TaMYC9B	GAMTYGIIWQESRAG	AC		GRVLGWDGH	CRDGP	AEQ		ARVTDRLSLARKRA	LR	LR	LR
TaMYC10A	LRNNVAIFWOLSHTK	SC		ELVLGWDGS	CREPHD	NEMNSTTRGDIHD		ASSLSQQRMRKRV	LR	LR	LR
TaMYC10B	LRNNVAIFWOLSHTK	SC		ELVLGWDGS	CREPHD	NEMNSTTRGDIHD		ASSLSQQRMRKRV	LR	LR	LR
TaMYC10D	LRNNVAIFWOLSHTK	SC		ELVLGWDGS	CREPHD	NEMNSTTRGDIHD		ASSLSQQRMRKRV	LR	LR	LR
TaMYC9D	GAMTYGIIWQESR	AC		AVLWGDGH	CRDGP	AEQ		AGAADRLSLARKRA	LR	LR	LR
TaMYC8D	AGNNVAIFWOLSRTK	SC		DLVLGWDGS	CREPND	AEALAAASA		GNDDAQRMKRV	LR	LR	LR
TaMYC3D	ETWTVAIFWQSSDA	C		ASLLGWDGV	YKCCDD	ADKRRQQPT		PASAAEQEHKRV	LR	LR	LR
TaMYC3B	ETWTVAIFWQSSDA	C		ASLLGWDGV	YKCCDD	ADKRRQQPT		PASAAEQEHKRV	LR	LR	LR
TaMYC12B	INNTVAIFWQSSISGP	AC		VLWKKDF	YNGEIK	TRKM		TSSITTTT	ERS	QCL	REL
TaMYC5B	TNWSVAIFWQSSISR	PC		VLWKKDF	YNGEIK	TRKVTSSAD		LSADQLVLQR	SE	QCL	REL
TaMYC5D	INNTVAIFWQSSISR	PC		VLWKKDF	YNGEIK	TRKVTSSAD		LTADQLVLQR	SE	QCL	REL
TaMYC4A	RLMKVAIFWQSSISSEK	HC		ILTWEDGV	VD	KMTKNTRDHYGGP		ADGDNQIIT	FTSN	DGG	QOSY
TaMYC2B	LRNTVAIFWQSSISSEK	HC		ALVWEGDH	YNGEIK	TRKVTQPAVAQAQAPA		PAEAAADQARSR	ROL	KE	ESL
TaMYC3A	ETWTVAIFWQSSDA	C		ASLLGWDGV	YKCCDD	ADKRRQQPT		PASAAEQEHKRV	LR	LR	LR
TaMYC4D	GLMKVAIFWQSSISSEK	HC		ILTWEDGV	VD	KMTKNTRDHYGGP		ADGDNQIIT	FTSN	DGG	QOSY
TaMYC7D	INNTVAIFWQSSISGL	RPPC		VLWKKDF	YNGEIK	TRKVTSSAD		VTANDLILQR	SE	QCL	REL
TaMYC4B	GLMKVAIFWQSSISSEK	HC		ILTWEDGV	VD	KMTKNTRDHYGGP		ADGDNQIIT	FTSN	DGG	QOSY
TaMYC11D	INNTVAIFWQSSISGL	RPPC		VLWKKDF	YNGEIK	TRKVTSSAD		VTANDLILQR	SE	QCL	REL
TaMYC1	INNTVAIFWQSSISR	PC		VLWKKDF	YNGEIK	TRKVTSSAD		ITADQLVLQR	SE	QCL	REL
TaMYC2A	LRNTVAIFWQSSISSEK	HC		ALVWEGDH	YNGEIK	TRKVTQPAVAQAQAPA		PAEAAADQARSR	ROL	KE	ESL
TaMYC8B	AGNNVAIFWOLSRTK	SC		DLVLGWDGS	CREPND	AEALAAASA		GNDDAQRMKRV	LR	LR	LR
TaMYC6D	INNTVAIFWQSSISR	PC		VLWKKDF	YNGEIK	TRKVTSSAD		LTADQLVLQR	SE	QCL	REL
TaMYC7B	INNTVAIFWQSSISGL	RPPC		VLWKKDF	YNGEIK	TRKVTSSAD		VTANDLILQR	SE	QCL	REL
TaMYC7A	INNTVAIFWQSSISGP	PPAC		VLWKKDF	YNGEIK	TRKVTSSAD		PTADNLVLQR	SE	QCL	REL
BdMYC1	LRNTVAIFWQSSISSEK	HC		ALVWEGDH	YNGEIK	TRKVTQPAVAQAQAPA		PAEAAADQARSR	ROL	KE	ESL
BdMYC2	LRNTVAIFWQSSISSEK	HC		ALVWEGDH	YNGEIK	TRKVTQPAVAQAQAPA		PAEAAADQARSR	ROL	KE	ESL
BdMYC3	GLMKVAIFWQSSISSEK	HC		ILTWEDGV	VD	KMTKNTRDHYGGP		ADGDNQIIT	FTSN	DGG	QOSY
BdMYC4	GGNNVAIFWQSSISR	PC		VLWKKDF	YNGEIK	TRKVTSSAD		LTADQLVLQR	SE	QCL	REL
BdMYC5	GAMTYGIIWQESRAG	AC		AVLWGDGH	CRDGP	AEQ		AGAADRLSLARKRA	LR	LR	LR
BdMYC6	DGMDVCIWQLSPDQ			RFLDM	TECCS	EF		SELEA	QV	SA	LD
BdMYC7	ETWTVAIFWQSSDA	GAC		ASLLGWDGV	YKCCDD	ADKRRQQPT		PASAAEQEHKRV	LR	LR	LR
OsMYC1	AGNNVAIFWOLSRTK	SC		DLVLGWDGS	CREPHD	GEAGPAASA		GSDEAKQRMKRV	LR	LR	LR
OsMYC7	GAMTYGIIWQESRAG	GAAS		RAARAVLWGDGH	CRDGA	GHGE		VGAERSVABKRV	LR	LR	LR
OsMYC4	VGWSVAIFWQSSISR	PC		VLWKKDF	YNGEIK	TRKVTSSAD		LTADQLVLQR	SE	QCL	REL
OsMYC5	DGMDVCIWQLSPDQ			RFLDM	TECCS	EF		SELEA	QV	SA	LD
OsMYC6	ISWSVAIFWQSSISR	PC		VLWKKDF	YNGEIK	TRKVTSSAD		LTADQLVLQR	SE	QCL	REL
OsMYC7	INNTVAIFWQSSISR	PC		VLWKKDF	YNGEIK	TRKVTSSAD		LTADQLVLQR	SE	QCL	REL
OsMYC72	ETWTVAIFWQSSDA	STC		ASLLGWDGV	YKCCDD	ADKRRQQPT		PASAAEQEHKRV	LR	LR	LR
AtMYC3	ENMTVAIFWQSSISR	DSST		ENMTVAIFWQSSISR	DSST			ENMTVAIFWQSSISR	DSST		
AtMYC5	EPWSVAIFWQSSISR	FSC		EPWSVAIFWQSSISR	FSC			EPWSVAIFWQSSISR	FSC		
AtMYC4	ENMTVAIFWQSSISR	DSST		ENMTVAIFWQSSISR	DSST			ENMTVAIFWQSSISR	DSST		
AtEGL3	IQWSVAIFWQSSISR	PC		IQWSVAIFWQSSISR	PC			IQWSVAIFWQSSISR	PC		
AMS	RAMDVCIWQLSPDQ			RFLDM	TECCS	EF		SELEA	QV	SA	LD
AtTT8	VDNTVAIFWQSSISR	PC		VDNTVAIFWQSSISR	PC			VDNTVAIFWQSSISR	PC		
AtMYC2	EGMTVAIFWQSSISR	PC		EGMTVAIFWQSSISR	PC			EGMTVAIFWQSSISR	PC		
AtMYC1	VQWSVAIFWQSSISR	PC		VQWSVAIFWQSSISR	PC			VQWSVAIFWQSSISR	PC		
L-Myc Homo sapiens	--MDRDSVQHYFYDY			--MDRDSVQHYFYDY				--MDRDSVQHYFYDY			
myc Homo sapiens	YDLDDSVQPYFYCD			YDLDDSVQPYFYCD				YDLDDSVQPYFYCD			
L-myc-2 Homo sapiens	--MDRDSVQHYFYDY			--MDRDSVQHYFYDY				--MDRDSVQHYFYDY			
N-myc Homo sapiens	PDLEDSLQPCFYPD			PDLEDSLQPCFYPD				PDLEDSLQPCFYPD			
myc Bos taurus	YDLDDSVQPYFYCD			YDLDDSVQPYFYCD				YDLDDSVQPYFYCD			
L-Myc Bos taurus	ADMDDSVQHYFYDY			ADMDDSVQHYFYDY				ADMDDSVQHYFYDY			
N-myc Mus musculus	PDLEDSLQPCFYPD			PDLEDSLQPCFYPD				PDLEDSLQPCFYPD			
c-myc Mus musculus	YDLDDSVQPYFYCD			YDLDDSVQPYFYCD				YDLDDSVQPYFYCD			
L-myc Mus musculus	--MDRDSVQHYFYDY			--MDRDSVQHYFYDY				--MDRDSVQHYFYDY			
s-myc Mus musculus	SDLEDDSLKPCFYFE			SDLEDDSLKPCFYFE				SDLEDDSLKPCFYFE			
L-Myc Sus scrofa	--MDRDSVQHYFYDY			--MDRDSVQHYFYDY				--MDRDSVQHYFYDY			
n-Myc Sus scrofa	YDLDDSVQPYFYCD			YDLDDSVQPYFYCD				YDLDDSVQPYFYCD			
N-Myc Sus scrofa	PDLEDSLQPCFYPD			PDLEDSLQPCFYPD				PDLEDSLQPCFYPD			

	230	240	250	260	270	280	290	300	310	320	330
TaMYC8A	GGADEE	DYAPTIGQ	VTDIEWFELVSMYFAAPRRAGGPGQVFAAGLPH-VV						PNSERNVFP	ANNVYRGYLAQSAQLR	
TaMYC9A	GDEDGA	DYALRLDR	VTVGEMVFLASMYFAAPRRAGGPGQVFAAGLPH-VV						AVDPHLPAA	PGWYVRASLAQSAQLR	
TaMYC9B	GDDDDG	DYALRLDR	VTVGEMVFLASMYFAAPRRAGGPGQVFAAGLPH-VV						VDPHLPASAAA	PGWYVRASLAQSAQLR	
TaMYC10A	AGADEE	DDALRIDQ	VTDIEWFELVSMYFAAPRRAGGPGQVFAAGLPH-VV						PNNPHKVSP	SNYCVRGFLASAAQGR	
TaMYC10B	AGAEDE	DDALRIDQ	VTDIEWFELVSMYFAAPRRAGGPGQVFAAGLPH-VV						PNNPHKVSP	SNYCVRGFLASAAQGR	
TaMYC10D	AGADEE	DDALRIDQ	VTDIEWFELVSMYFAAPRRAGGPGQVFAAGLPH-VV						PNNPHKVSP	SNYCVRGFLASAAQGR	
TaMYC9D	GDEDGA	DYALRLDR	VTVGEMVFLASMYFAAPRRAGGPGQVFAAGLPH-VV						AVDPHLPAS	PGWYVRASLAQSAQLR	
TaMYC8D	DYAPTIGQ	VTDIEWFELVSMYFAAPRRAGGPGQVFAAGLPH-VV							PNSERNVFP	ANNVYRGYLAQSAQLR	
TaMYC3D	AGGAAAE	DEAVEEE	VTDIEWFELVSMYFAAPRRAGGPGQVFAAGLPH-VV						ATGLA	SAPCEARARQAYTFGLR	
TaMYC3B	AGGAAAE	DEAVEEE	VTDIEWFELVSMYFAAPRRAGGPGQVFAAGLPH-VV						ATGLA	SAPCEARARQAYTFGLR	
TaMYC12B	LS	GGNSDR	RARLSPED	LGDAEWYFLVSMYFAAPRRAGGPGQVFAAGLPH-VV					YNAQAD	TKTFQRALLAKTASQ	
TaMYC5B	LSGQCD	HRARRR	AAALSPED	LGDAEWYFLVSMYFAAPRRAGGPGQVFAAGLPH-VV					CNAQCAD	TKTFQRALLAKTASQ	
TaMYC5D	LSGQCD	HRARRR	AAALSPED	LGDAEWYFLVSMYFAAPRRAGGPGQVFAAGLPH-VV					CNAQCAD	TKTFQRALLAKTASQ	
TaMYC4A			P	FCPTAALRMSHSMVSLGEBIIKKVAIMQHC-WI					SSS	DLRSTLVVKKYHEDWQFOFAAQIK	
TaMYC2B	DVHGCA	QEARRR	SAALAPED	LGDAEWYFLVSMYFAAPRRAGGPGQVFAAGLPH-VV					SRANEVD	SKVFSRAILAKSASQ	
TaMYC3A	AG	GGAAG	DEAVEEE	VTDIEWFELVSMYFAAPRRAGGPGQVFAAGLPH-VV					ATGLA	SAPCEARARQAYTFGLR	
TaMYC4D			P	FCPTAALRMSHSMVSLGEBIIKKVAIMQHC-WI					SSS	DLRSTLVVKKYHEDWQFOFAAQIK	
TaMYC7D	LSGKAD	HRGRRR	AAALSPED	LGDAEWYFLVSMYFAAPRRAGGPGQVFAAGLPH-VV					YNAQAD	TKTFQRALLAKTASQ	
TaMYC4B			P	FCPTAALRMSHSMVSLGEBIIKKVAIMQHC-WI					SSS	DLRSTLVVKKYHEDWQFOFAAQIK	
TaMYC11D	LPGNSN	NRARRR	AAALSPED	LGDAEWYFLVSMYFAAPRRAGGPGQVFAAGLPH-VV					YNAQAD	TKTFQRALLAKTASQ	
TaMYC1	LSGQCD	HRARRR	AAALSPED	LGDAEWYFLVSMYFAAPRRAGGPGQVFAAGLPH-VV					CNAQCAD	TKTFQRALLAKTASQ	
TaMYC2A	DVHGCA	QEARRR	SAALAPED	LGDAEWYFLVSMYFAAPRRAGGPGQVFAAGLPH-VV					SRANEVD	SKVFSRAILAKSASQ	
TaMYC8B	GGADEE	DYAPTIGQ	VTDIEWFELVSMYFAAPRRAGGPGQVFAAGLPH-VV						PNSERNVFP	ANNVYRGYLAQSAQLR	
TaMYC6D	LSGQCD	HRARRR	AAALSPED	LGDAEWYFLVSMYFAAPRRAGGPGQVFAAGLPH-VV					CNAQCAD	TKTFQRALLAKTASQ	
TaMYC7B	LSGKAD	HRARRR	AAALSPED	LGDAEWYFLVSMYFAAPRRAGGPGQVFAAGLPH-VV					YNAQAD	TKTFQRALLAKTASQ	
TaMYC7A	SGGNSD	RRARRR	AAALSPED	LGDAEWYFLVSMYFAAPRRAGGPGQVFAAGLPH-VV					CNAQCAD	TKTFQRALLAKTASQ	
BdMYC1	TGCRAEAVQ	EASARRR	TAALAPED	LGDAEWYFLVSMYFAAPRRAGGPGQVFAAGLPH-VV					CRANEVD	SKVFSRAILAKSASQ	
BdMYC2	DAVQAE	SAARRR	TAALAPED	LGDAEWYFLVSMYFAAPRRAGGPGQVFAAGLPH-VV					CRANEVD	SKVFSRAILAKSASQ	
BdMYC3			P	FCPTAALRMSHSMVSLGEBIIKKVAIMQHC-WI					SAND	FRSTLMYKYHEDWQFOFAAQIK	
BdMYC4		GGADEE	DYAPTIGQ	VTDIEWFELVSMYFAAPRRAGGPGQVFAAGLPH-VV					PNTDRNVFP	VNVCYRGYLAQSAQLR	
BdMYC5		GGEDEE	DYALRLDR	VTVGEMVFLASMYFAAPRRAGGPGQVFAAGLPH-VV					AVDDPRR	PGWYVRASLAQSAQLR	
BdMYC6			PLD						SSSI	MMHACALLNQPI-WI	
BdMYC7	AG	GGAAG	DEAVEEE	VTDIEWFELVSMYFAAPRRAGGPGQVFAAGLPH-VV					ASGLA	SAPCEARARQAYTFGLR	
OsMYC1	GGVDEE	DYAPTIGQ	VTDIEWFELVSMYFAAPRRAGGPGQVFAAGLPH-VV						PNTDRNVFP	VNVCYRGYLAQSAQLR	
OsMYC7	GG	GDEDGA	DYALRLDR	VTVGEMVFLASMYFAAPRRAGGPGQVFAAGLPH-VV					DVDPHPSGSGSAP	PGWYVRASLAQSAQLR	
OsMYC4	GTGRGG	GGGEGH	AADGAAGHSHDRVDAVHKAMAQQVHVHVEVIAQALSLHR-WI						VHDIVDECEE	DLVLEMKQFOFAAQIK	
OsMYC5			PLD						SSSEEE	EAD	GGGAK
OsMYC6	LSGEC	HRARRR	AAALSPED	LGDAEWYFLVSMYFAAPRRAGGPGQVFAAGLPH-VV					RNAQAD	SKTFQRALLAKTASQ	
OsMYC7	LSGEC	HRARRR	AAALSPED	LGDAEWYFLVSMYFAAPRRAGGPGQVFAAGLPH-VV					TNAQAD	RKLFHRAILAKSASQ	
OsMYC72	A	GAGAG	DEAVEEE	VTDIEWFELVSMYFAAPRRAGGPGQVFAAGLPH-VV					ATGLS	SAPCEARARQAYTFGLR	
AtMYC3	SGGIGV	SDESNDDE	VTDIEWFELVSMYFAAPRRAGGPGQVFAAGLPH-VV						SGSGALT	GSGCEARARQAYTFGLR	
AtMYC5		SGEAFV	VEDDVSDDDDVEVTDIEWFELVSMYFAAPRRAGGPGQVFAAGLPH-VV						TGSDLIY	GSGCEARARQAYTFGLR	
AtMYC4		SGGVGG	GDEAGDEE	VTDIEWFELVSMYFAAPRRAGGPGQVFAAGLPH-VV					SGSNALA	GSGCEARARQAYTFGLR	
AtEGL3	ASGSSQ	VTRRAS	AAALSPED	LGDAEWYFLVSMYFAAPRRAGGPGQVFAAGLPH-VV					CNAETAD	SKVFSRAILAKSASQ	
AMS				PRTKSCFELSLPASIPLDSTVAFELLNQTC-WI						SSSEES	FWETIC
AtTT8	LAGE	TSEARA	CTALSPED	LGDAEWYFLVSMYFAAPRRAGGPGQVFAAGLPH-VV					SCANEVD	SKVFSRAILAKSASQ	
AtMYC2		SGGVAE	SDDAVDEE	VTDIEWFELVSMYFAAPRRAGGPGQVFAAGLPH-VV					SGSDQLS	GSGCEARARQAYTFGLR	
AtMYC1	TVSTTHDNLNDDDDNCHSTSM	SPDD	LSDEWYFLVSMYFAAPRRAGGPGQVFAAGLPH-VV						CNAQYAE	NKLFHRAILAKSASQ	
L-Myc Homo sapiens		PSPPTS	PWGLGPGA	CDPAPGLPPEEPFGGCTG-DEABSRHSGKMG					RNYASII	PRDCMWSGFSAREKLE	
myc Homo sapiens			TPPLSPSR-RSGLCSPSVAVTETSLRGDNDGGGCSSTADOLEMVT						TELLGGDMVNQSFICDPDDETFIKNII	PRDCMWSGFSAREKLE	
L-myc-2 Homo sapiens			PWGLGPGA	GNPALSFGLEFPVFCAGDETESQDYWKA-WI					ANYASLI	PRDCMWSGFSAREKLE	
N-myc Homo sapiens			TPPLSPSR-RSGLCSPSVAVTETSLRGDNDGGGCSSTADOLEMVT						TELLGGDMVNQSFICDPDDETFIKNII	PRDCMWSGFSAREKLE	
myc Bos taurus			TPPLSPSR-RSGLCSPSVAVTETSLRGDNDGGGCSSTADOLEMVT						TELLGGDMVNQSFICDPDDETFIKNII	PRDCMWSGFSAREKLE	
L-Myc Bos taurus			PWGLGPGA	GNPALSFGLEFPVFCAGDETESQDYWKA-WI					ANYASLI	PRDCMWSGFSAREKLE	
N-myc Mus musculus			TPPLSPSR-RSGLCSPSVAVTETSLRGDNDGGGCSSTADOLEMVT						TELLGGDMVNQSFICDPDDETFIKNII	PRDCMWSGFSAREKLE	
c-myc Mus musculus			TPPLSPSR-RSGLCSPSVAVTETSLRGDNDGGGCSSTADOLEMVT						TELLGGDMVNQSFICDPDDETFIKNII	PRDCMWSGFSAREKLE	
L-myc Mus musculus			PWGLGPGA	GNPALSFGLEFPVFCAGDETESQDYWKA-WI					ANYASLI	PRDCMWSGFSAREKLE	
s-myc Mus musculus			TPPLSPSR-RSGLCSPSVAVTETSLRGDNDGGGCSSTADOLEMVT						TELLGGDMVNQSFICDPDDETFIKNII	PRDCMWSGFSAREKLE	
L-Myc Sus scrofa			PWGLGPGA	GNPALSFGLEFPVFCAGDETESQDYWKA-WI					ANYASII	PRDCMWSGFSAREKLE	
n-Myc Sus scrofa			TPPLSPSR-RSGLCSPSVAVTETSLRGDNDGGGCSSTADOLEMVT						TELLGGDMVNQSFICDPDDETFIKNII	PRDCMWSGFSAREKLE	
N-Myc Sus scrofa			TPPLSPSR-RSGLCSPSVAVTETSLRGDNDGGGCSSTADOLEMVT						TELLGGDMVNQSFICDPDDETFIKNII	PRDCMWSGFSAREKLE	

[illegible]

	450	460	470	480	490	500	510	520	530	540	550	
TaMYC8A	IER										SPGLAKIF	GK
TaMYC9A	AVA										PDDRMRI	GK
TaMYC9B	AVA										PDDRMRI	GK
TaMYC10A	AQI										SPGLAKIF	GK
TaMYC10B	AQI										SPGLAKIF	GK
TaMYC10D	AQI										SPGLAKIF	GK
TaMYC9D	AVA										PDDRMRI	GK
TaMYC8D	IER										SPGLAKIF	GK
TaMYC3D	AET										DPSVLWLA	DA
TaMYC3B	AET										DPSVLWLA	DA
TaMYC12B	SLAN										DTSEAGIM	LE
TaMYC5B	SAD										DTGDADIV	FE
TaMYC5D	SAD										DTGDADIV	FE
TaMYC4A	KKPTADVSLDPADVLAHDLFDVINNSAQLFTIEHLSLPHPFTPSEFFPMLEDVITGAY							DIGLTTCSDES	DLWTVNEAPSELTHCKTLV		PEMKNLS	FM
TaMYC2B	SHI										EPNKFDE	YE
TaMYC3A	AET										DPSVLWLA	DA
TaMYC4D	KKPAADVSVDPADVLAHDLFDVINNSAQLFTIEHLSLPHPFTPSEFFPMLEDVITGAYNVGLTTCSD							ETFDANES	DLWTVNEAPSELTHCKTLV		PEMKNLS	FM
TaMYC7D	STNEIG										NGEVDIVV	FE
TaMYC4B	KKPTADISVDPADVLAHDLFDVINNSAQLFTIEHLSLPHPFTPSEFFPMLEDVITGAYDIGLTTCS							DETFDANES	DLWTVNEAPSELTHCKTLV		PEMKNLS	FM
TaMYC11D	SANDT										REATDILL	FE
TaMYC1	SVD										DTGDADIV	FD
TaMYC2A	SHIDQQSFQTRKPTTGQPKP										EPNKFNE	YE
TaMYC8B	IER										SPGLAKIF	GK
TaMYC6D	SAD										DAGEADIV	FE
TaMYC7B	STNETR										RDVEITIV	FE
TaMYC7A	SLAK										RTGEADM	FE
BdMYC1	RKI										HAGQDNEM	EH
BdMYC2	RKI										HAGQDNEM	EH
BdMYC3	KKPTANVSVDPADVLAHDLFDLINSSAQLLTIDHLSIPHPLTMSEFFPMLEDVITIGA							CPDETFDANES	DLWTVNEVPSELTC	SKKVV	PEMKNLS	FM
BdMYC4	IEK										SPGLAKIF	GK
BdMYC5											PNDYMRIF	GK
BdMYC6											GHGWQL	QQ
BdMYC7	GGDQDET										DPSVLWLA	DA
OsMYC1	TDK										SPGLAKIF	GK
OsMYC7											PEDFMRIF	GK
OsMYC4	TSSHSEDLAGGGNTYNDDMINHQFRHCKSPASTIQSFNPVQQFYAGPTFCRPVTIASRCDLFQPDHGSTFTLNSQSE							DNSTALLKNSV	SHKTSNDAFS	HA	FN	
OsMYC5											TPSFQWDG	GA
OsMYC6	PNE										TEADADIV	EG
OsMYC7											AGDADIVV	FE
OsMYC72											DPSVLWLA	DA
AtMYC3	DQG										ENDPALWI	SE
AtMYC5											SKYF	
AtMYC4	DQG										ENDPGLWI	SE
AtEGL3	FDPLS										DDKYTFVF	IT
AMS											ESKPYGML	SG
AtTT8	EVHE										EADEEEV	EE
AtMYC2	DQG										ENDPSMWI	ND
AtMYC1											ERKMEIKI	SE
L-Myc Homo sapiens											EPKTQACS	GS
myc Homo sapiens	LND										SSSPKSCA	SQ
L-myc-2 Homo sapiens											EPKIQACS	RS
N-myc Homo sapiens	ECV										DPAVVFPFPVNKREPA	
myc Bos taurus	LND										SSSPKPCA	SP
L-Myc Bos taurus											EPKTQACS	GS
N-myc Mus musculus	ECV										DPAVVFPFPVNKRESA	
c-myc Mus musculus	LND										SSSPKSCSSDSTAFS	
L-myc Mus musculus											EPKTQACS	GS
s-myc Mus musculus	ECV										DPAVVFFP	AN
L-Myc Sus scrofa											EPKTQACS	GS
n-Myc Sus scrofa	LND										SSSPKPCA	SP
N-Myc Sus scrofa	ECV										DPAVVFPFPVNKREPA	

560 570 580 590 600 610 620 630 640 650 660

TaMYC8A DLNLG-----RSSAGPVIQVSKVDERPWE-Q-RTAGGGSSLLPVPKG-----LQSFT---WSQARGLNSHHQKF

TaMYC9A DVSR-----PPLPPVQTTGSDASWALR-LGGQAKQEAATAKPK-----LQSFT---WSQARGLNSHHQKF

TaMYC9B DVSR-----PPLPPVQTTGSDASWALR-LGGQAKQEAATAKPK-----LQSFT---WSQARGLNSHHQKF

TaMYC10A DLNLS-----RPLVNTGAVPLKMNERSWDMQ-KNCGGESLLLPVRKG-----LQNFT---WSQARGLNSHHQKF

TaMYC10B DLNLS-----RPLVNTGAVPLKMNERSWDMQ-KNCGGESLLLPVRKG-----LQNFT---WSQARGLNSHHQKF

TaMYC10D DLNLS-----RPLVNTGAVPLKMNERSWDMQ-KNCGGESLLLPVRKG-----LQNFT---WSQARGLNSHHQKF

TaMYC9D DVSR-----PPLPPVQTTGSDASWALR-LGGQAKQEAATAKPK-----LQSFT---WSQARGLNSHHQKF

TaMYC8D DLNLG-----RSSAGPVIQVSKVDERPWE-Q-RTAGGGSSLLPVPKG-----LQSFT---WSQARGLNSHHQKF

TaMYC3D PAGDMKESPPSVEISV---SKP-----PPQPPQIHHFENGSTSTLTENPSLSVHAQQPPPPQAAAAAQQRNQ---HQOQLQHQLQLQHQNQGPFRRRLNF

TaMYC3B PAGDMKESPPSVEISV---SKP-----PPQPPQIHHFENGSTSTLTENPSLSVHAQQPPPPQAAAAAQQRNQ---HQOQLQHQLQLQHQNQGPFRRRLNF

TaMYC12B DLNHN-----AIEGMISELREVECLSDVNLECVTKE---MDEFQFLEGLDSCAL---EDLESFM---W---HGRLKQEST

TaMYC5B DLNHE-----SIAAIIPEGELGEVECLSDGNLEIRITKE---INGFYGLCDELDVSCAL---EDLESFM---W---HGRLKQEST

TaMYC5D DLNHN-----TMATMMPGELELGEVECLSDGNLEIRITKE---INGFYGLCDELDVSCAL---EDLESFM---W---HGRLKQEST

TaMYC4A OKLINSNSKLSCTSVI---NIQDADYNNIDDFILAYMAQEYQHTCGSTTVLNDVVTS-D-SSISHKMKDLDAIPR---EDLESFM---W---HGRLKQEST

TaMYC3B DDEMEYDDDEIDAGC---TS-----GSASHDDHATHNAGSSELQVMSERVR-DGCSNNDDEIRKMLV---CQ---NGTSDHNSLHGQDE

TaMYC3A PAGDMKESPPSVEISV---SKP-----PPQPPQIHHFENGSTSTLTENPSLSVHAQQPPPPQAAAAAQQRNQ---HQOQLQHQLQLQHQNQGPFRRRLNF

TaMYC4D OKLINSNSKLSCTSVI---NIQDADYNNIDDFILAYMAQEYQHTCGSTTVLNDVVTS-N-SSISHKMKDLDAIPR---EDLESFM---W---HGRLKQEST

TaMYC7D DLNHN-----VAERFISELGEVESMSDANINCATKE---VDDFYDIEELDVCAL---EDLESFM---W---HGRLKQEST

TaMYC4B OKLINSNSKLSCTSVI---NIQDADYNNIDDFILAYMAQEYQHTCGSTTVLNDVVTS-N-SSISHKMKDLDAIPR---EDLESFM---W---HGRLKQEST

TaMYC11D DFDHN-----DTVEGVTSEQREVECLSDGNLEIRITKE---INGFYGLCDELDVSCAL---EDLESFM---W---HGRLKQEST

TaMYC1 VLNHN-----TMAMMIPGELELGEVECLSDGNLEIRITKE---INGFYGLCDELDVSCAL---EDLESFM---W---HGRLKQEST

TaMYC2A DDEMEYDDDEIDAECA---S-----GSASHDDHATHNAGSSELQVMSERVR-DGCSNNDDEIRKMLV---CQNSTDDHNSLHGQNE

TaMYC8B DLNLG-----RSSAGPVIQVSKVDERPWE-Q-RTAGGGSSLLPVPKG-----LQSFT---WSQARGLNSHHQKF

TaMYC6D DLNHN-----TMATMMPGELELGEVECLSDGNLEIRITKE---INGFYGLCDELDVSCAL---EDLESFM---W---HGRLKQEST

TaMYC7B DLNHN-----AIEGMISELREVECLSDGNLEIRITKE---INGFYGLCDELDVSCAL---EDLESFM---W---HGRLKQEST

TaMYC7A DLNHN-----TIEGMISELREVECLSDGNLEIRITKE---INGFYGLCDELDVSCAL---EDLESFM---W---HGRLKQEST

BdMYC1 DDDDI---GAECASGSGTNTGRNYSRDAPLNIIVGNTDDQATPNAGSSELQVMSERVR-DGCSNNDDEIRKMLV---CQNSNDQSDFRQDEPYE

BdMYC2 DDDDI---GAECASGSG---TNAGRNYSQDTPLNIIVGNTDDQATPNAGSSELQVMSERVR-DGCSNNDDEIRKMLV---CQNSNDQSDFRQDEPCD

BdMYC3 OKLINSNSKLSCTSVI---NIQDADYNNIDDFILAYMAQEYQHTCGSTTVLNDVVTS-N-SSISHKMKDLDAIPR---EDLESFM---W---HGRLKQEST

BdMYC4 DLNLG-----RPSAAPVIGVPGKDEERSWEQR-AAGAGVGSLLPVPKG-----LQNFT---WSQARGLNSHHQKF

BdMYC5 ELSRG-----AAQTGCQATWAAAP---LRLGGQAMAATRFAPK-----LQNFT---WSQARGLNSHHQKF

BdMYC6 QQPAM-----AAAEQEFYAATSVASLNLFDGSGGGAGGDDQFLAA-----LQNFT---WSQARGLNSHHQKF

BdMYC7 PVGDMKESPPSVEISV---SKP-----PPQPPQIHHFENGSTSTLTENPSLSVHAQQPPPPQAAAAAQQRNQ---HQOQLQHQLQLQHQNQGPFRRRLNF

OsMYC1 DLNLG-----RPSAAPVIGVPGKDEERSWEQR-AAGAGVGSLLPVPKG-----LQNFT---WSQARGLNSHHQKF

OsMYC7 ELSPG-----RPSQPMGCDAPWTPR-----LVQTT-----LQNFT---WSQARGLNSHHQKF

OsMYC4 PLNPNVNSISGRREC---SIEQHGSCRNEMETITGRASSSTGKTNINKVDLLSQCLVGCQASNATSVIRKFTQMSIVDNTKLQDGS---YAIPIHAALVDSTQY

OsMYC5 DAQRL-----MYGSSSLNLDAAADDDPFLGGGGGDAVGEAATAA-----LQNFT---WSQARGLNSHHQKF

OsMYC6 LITHN-----AIEEGQMVVSDECVSNANRDPITM-E-IDELYSIYEDLDMDMD-----LQNFT---WSQARGLNSHHQKF

OsMYC7 LDHGNAAVEATTTTV---PG-----EPHAGVAGGEVACEPNSDNLEIQTMD---IGELYSICEELDVRP-----LQNFT---WSQARGLNSHHQKF

OsMYC72 PFMDMKDSISAADISV---SKP-----PPQPPQIHHFENGSTSTLTENPSLSVHAQQPPPPQAAAAAQQRNQ---HQOQLQHQLQLQHQNQGPFRRRLNF

AtMYC3 PTNTG-----IESPARVNNGNNSNSKSDSHQISKLE-KNDISSVENQNRQSSC-----LQNFT---WSQARGLNSHHQKF

AtMYC5 -----SGAPNSNELFPFQLE---SSCSSTVTGNPSPSPV-----LQNFT---WSQARGLNSHHQKF

AtMYC4 PNGVD-----SGLVAAPVMNNGNDSTNSDSQPIIS-KLCNGSSVENPDKVL-----LQNFT---WSQARGLNSHHQKF

AtEGL3 APTPTTSTSGFEQEP---DHDSFINDGASQVQSWQFVGEIISNCIHQSLNSSDCVSTQF---VGTGTRACDPRKSRI-----LQNFT---WSQARGLNSHHQKF

AMS DIQK-----GSKEDMMNLFPSSYDIS---ADQIRLNLFLPCMSDY-----LQNFT---WSQARGLNSHHQKF

AtTT8 EMTMS-----EEMRLGSPDDEDVSNQNLHSDLE---IESTHTLDTHMDMNL-----LQNFT---WSQARGLNSHHQKF

AtMYC2 PIGTP-----GSNEPGNAGPSSSSQLFSKSIQFE---NGSSSTLTENPNDPT-----LQNFT---WSQARGLNSHHQKF

AtMYC1 EKHL-----PLGISDEDLHYKRTISTVLNYSADRSG-KNDKNIRHROPILVTS-----LQNFT---WSQARGLNSHHQKF

L-Myc Homo sapiens BSPSD-----SENEEIDVVTVEKRQSLG---IRKPVTITVRADPLD-----LQNFT---WSQARGLNSHHQKF

myc Homo sapiens SSASFSPSSD-----LLSSTESSPQGSPEPLVLEETPTTSSD-SEEEQEDEEEDVVS-----LQNFT---WSQARGLNSHHQKF

L-myc-2 Homo sapiens BSPSD-----SENEEIDVVTVEKRQSLG---IRKPVTITVRADPLD-----LQNFT---WSQARGLNSHHQKF

N-myc Homo sapiens PVPAPASAPAAAGPAVASGAGIAPAGAPVAPPRPGGRQTSGGDHKALSTSGEDTLDSDDEDEDEEEDVVTV-----LQNFT---WSQARGLNSHHQKF

myc Bos taurus STAFSPSSD-----LLSSAESSPRASPEPLALHEETPTTSSD-SEEEQEDEEEDVVS-----LQNFT---WSQARGLNSHHQKF

L-Myc Bos taurus BSPSD-----SENEEIDVVTVEKRQSLG---IRKPVTITVRADPLD-----LQNFT---WSQARGLNSHHQKF

N-myc Mus musculus SVPAAPTSAPATSAAV---TSVSVPATAPVAAPARAGGRPASSGEAKALSTSGEDTLDSDDEDEDEEEDVVTV-----LQNFT---WSQARGLNSHHQKF

c-myc Mus musculus PSSDS-----LLSSAESSPRASPEPLVLEETPTTSSD-SEEEQEDEEEDVVS-----LQNFT---WSQARGLNSHHQKF

L-myc Mus musculus BSPSD-----SENEEIDVVTVEKRQSLG---IRKPVTITVRADPLD-----LQNFT---WSQARGLNSHHQKF

s-myc Mus musculus KREPM-----PVPTIPTSTGSAISLGHQGLSSLEDPLNSGSGVEEGGEETVVMLEETQ-----LQNFT---WSQARGLNSHHQKF

L-Myc Sus scrofa BSPSD-----SENEEIDVVTVEKRQSLG---IRKPVTITVRADPLD-----LQNFT---WSQARGLNSHHQKF

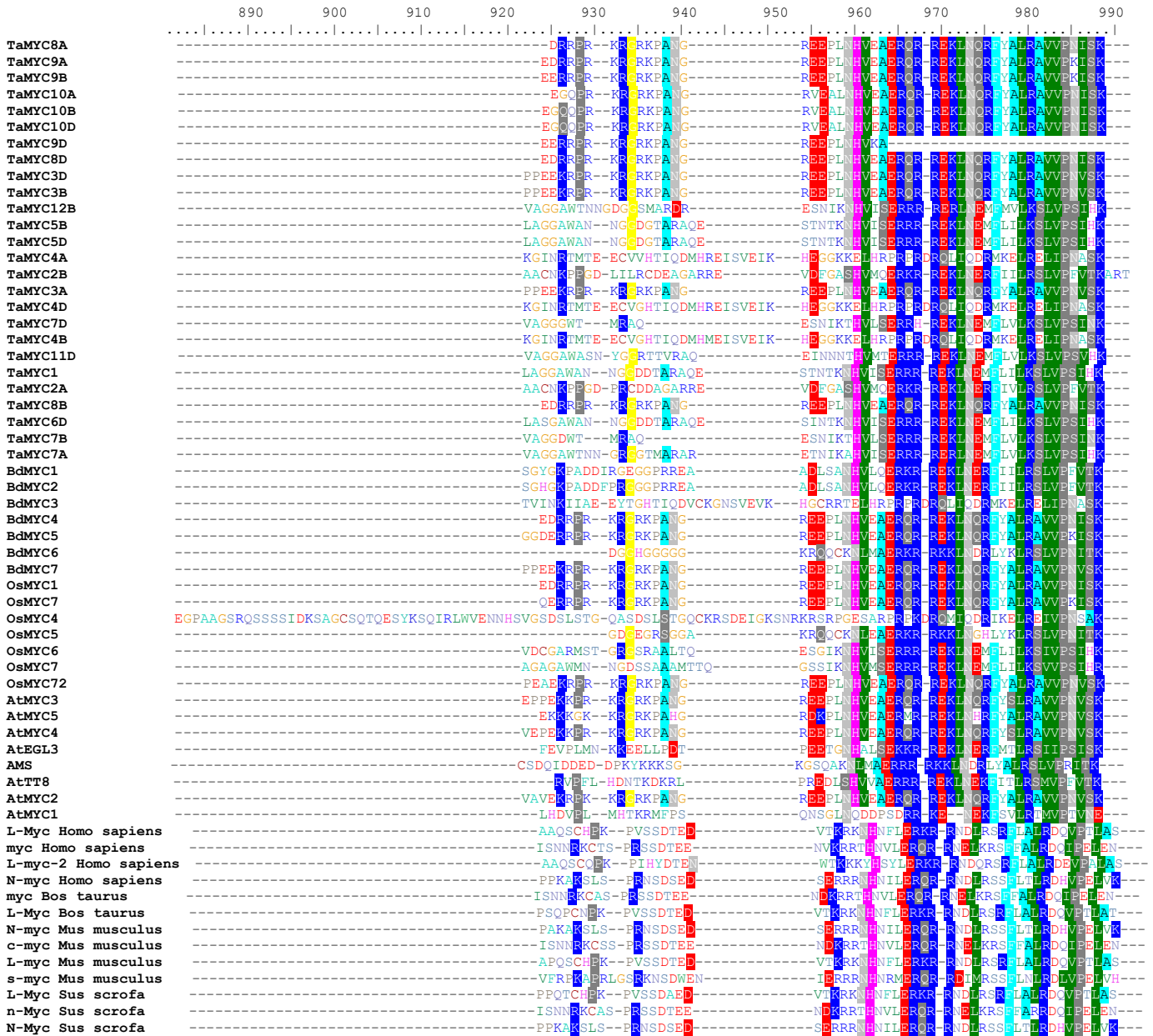
n-Myc Sus scrofa STAFSPSSD-----LLSSAESSPRASPEPLALHEETPTTSSD-SEEEQEDEEEDVVS-----LQNFT---WSQARGLNSHHQKF

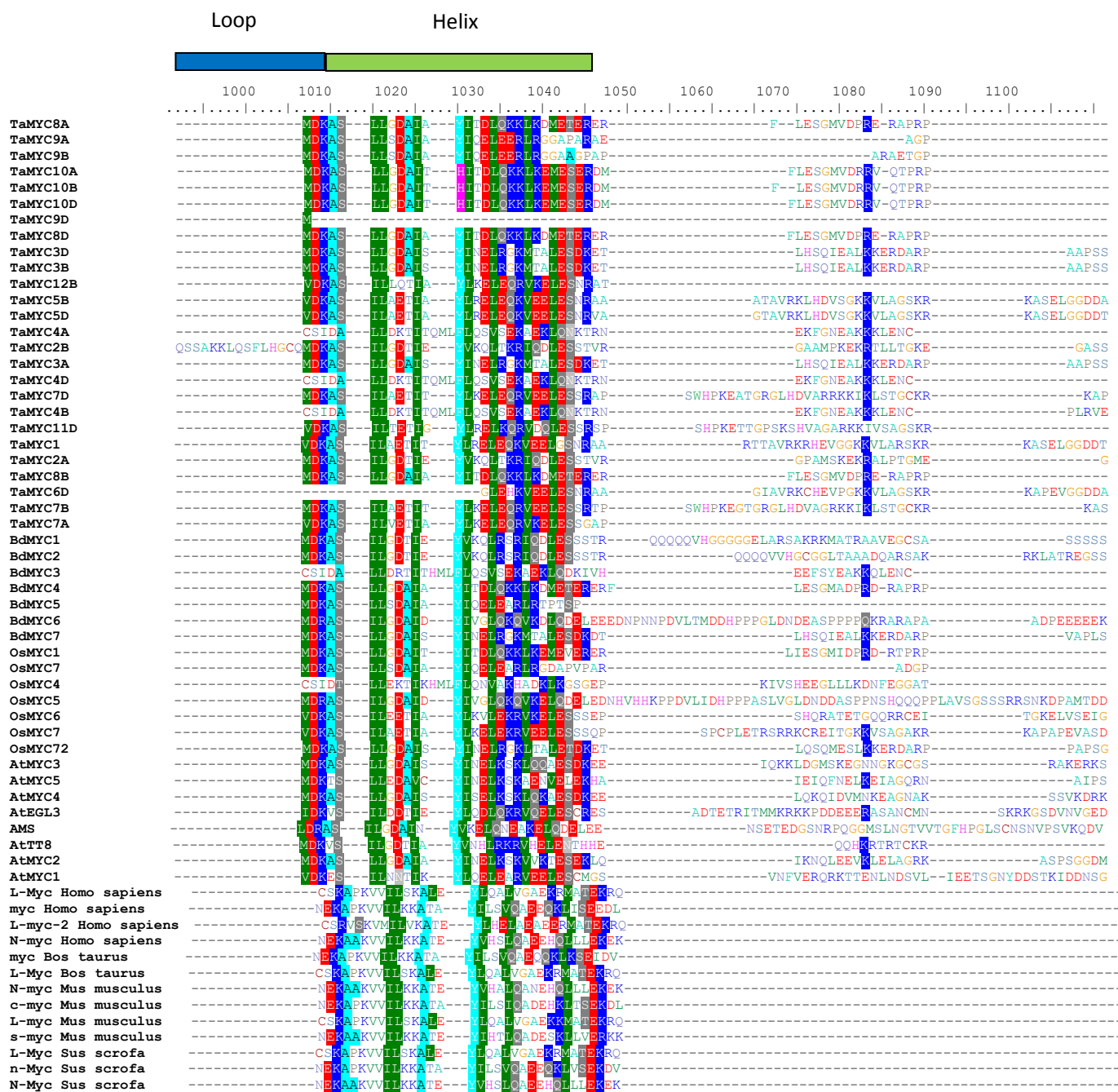
N-Myc Sus scrofa PAPAAPAVAPAACTVIVSGASAAAPAGAPVAALRPGGRPASGDHAKALSTSGEDTLDSDDEDEDEEEDVVTV-----LQNFT---WSQARGLNSHHQKF

	670	680	690	700	710	720	730	740	750	760	770	
TaMYC8A	NGGILIVSNEATHGNNRTADSS	TTTQFQLQKAPQLQKLP	LLQKPPQLVKPLQMVNQQL									QPQAPRCIDFSAGTS--
TaMYC9A												QQEPPKTISSFNNAVQ--
TaMYC9B												QQEPPKTISSFNKAVD--
TaMYC10A	NGGILVVKNETSQRSNGAAHSPGLSPFQ	LQNSQQILTQPPP										QSQTPRHIDFSVSGSS--
TaMYC10B	NGGILVVKSETSQRSNGAAHSPGLSPFQ	LQNSQQILTQPPP										QSQTPRHIDFSVSGSS--
TaMYC10D	NGGILVVKSETSQRSNGAAHSPGLSPFQ	IRNSQQILTQPPP										QSQTPRHIDFSVSGSS--
TaMYC9D												QQEPPKTISSFSDD--
TaMYC8D	NGGILIVSNEATHGNNRTADSS	TTTQFQLQKAPQLQKLP	LLQKPPQLVKPLQMVNQQL									QPQAPRCIDFSAGTS--
TaMYC3D	SDFASNASVTVPFFPKPESGEILNFGADST	SRNPSAPPAAATASLT	TAPGSLFSQHTATVTAPSNDAKNNPKRSM	EATSRASNTNHHQN								ATANEGLMISFSSAPT--
TaMYC3B	SDFASNASVTVPFFPKPESGEILNFGADST	SRNPSAPPAAATASLT	TAPGSLFSQHTATVTAPSNDAKNNPKRSM	EATSRASNTNHHQT								ATANEGLMISFSSAPT--
TaMYC12B												PCTEDVIVITLSSSVQG--
TaMYC5B												DGTTDGAVTFSFVFEF--
TaMYC5D												DGTTDGAVTFSFVFEF--
TaMYC4A	SHSLQANGNKAYSYSHLE	TNDYAEFLVDAITNQVGNIPNSCSYHSTDS										STSSSETQTQREDHALRL
TaMYC2A	AWHFLYEELCSGYPQSSAAGEN											LRQANGLNTRSYLAV--
TaMYC3A	SDFASNASVTVPFFPKPESGEILNFGADST	SRNPSAPPAAATASLT	TAPGSLFSQHTATVTAPSNDAKNNPKRSM	EATSRASNTNHHQT								ATANEGLMISFSSAPT--
TaMYC4D	SHSLQANGNKAYSYSHLE	TNDYAEFLVDAITNQVGNIPNSCSYHSTDS										STSSSETQTQREDHALRF
TaMYC7D												LRIDDDNTITLSSVNG--
TaMYC3D	SHSLQANGNKAYSYSHLE	TNDYAEFLVDAITNQVGNIPNSCSYHSTDS										STSSSETQTQREDHPLRL
TaMYC11D												PSTDVVIVITLSSRSEG--
TaMYC1												NGITNGAVTILSSVEF--
TaMYC2A	AWHFLYEELCSGYPQSS											LRQGGGLNTGSLYAV--
TaMYC8B	NGGILIVSNEATHGNNRAADSS	TTTQFQLQKAPQLQKLP	LLQKPPQLVKPLQMVNQQL									QPQAPRCIDFSAGTS--
TaMYC6D												GLEEIMGLCRSVAAP--
TaMYC7B												PRIDDDNTITLSSVNG--
TaMYC7A												PCTEDVNVITLSSVEG--
BdMYC1	SWHFLYEELCSGYPQSSGENQDIV											RRQAASTNTRSYVAA--
BdMYC2	SWHFLYEELCSGYPQSSAGENQDM											RRQAASTNTRSYVAA--
BdMYC3	SHSLRQANGSKTYFYSHLENADYTE	FLLDALTNQVGNIPNSD										SSHSTDYTSCETPIQR
BdMYC4	NGGILIVSNEVPH-NNGAADSPTTAQ	FQLQKATQLQKLP	QLQKPPQLVKPLQMVNQQL									QAQAPRCIDFSAGTS--
BdMYC5												EPSPKRSINFIQQPD--
BdMYC6												AAHEQQQLYSGGAAAAA
BdMYC7	SDFATNASVTVPFFPKPESGEILNFGADST	SRNPSAPPAAAAASLT	TAPGSLFSQHTATVTAPTNEAKNNPKRSM	EATSRASNTNHHPS								ATANEGLMISFSSAPT--
OsMYC1	NGGILIVSNEATPRNNGVDSS	TATQFQLQKAPPLQKLP	QLQKSHQLVKPQQILVSSQQQL									QPQAPRCIDFSAGTS--
OsMYC7												PVRPAKSLDFSKAN--
OsMYC4	SDCFQSLGLTIQSSSSSNSNAIHVD	TSHNAVHCKSNFCPLGDRNAANSSDLAELLASPI										LELTGGNDLFDVLQLQG
OsMYC5												PSVAVAQEQMOHAAAGG
OsMYC6												TEAVAAAAAADVDGVA
OsMYC7												DDVVAAADSSSIDGSC
OsMYC72	SDFASN-GGAAAPFFKPE	TGEILNFGNDSSSRNPSAPPAAATASLT	TAPGSLFSQHTPTLTAAANDAKSNNQKRSM	EATSRASNTNHHPS								ATANEGLMISFSSAPT--
AtMYC3												SNNDEGMLSFSTVVR--
AtMYC5												LARAPCGDVLSEGEN--
AtMYC4												SNNDEGMLSFSTVLP-C
AtEGL3												LILGPQFQNF--
AMS												NKEMGMNPNFTVEE--
AtTT8												SLSDSVSTYSYIQS--
AtMYC2												SSGNPDPSYSGQTQFE
AtMYC1												
L-Myc Homo sapiens												ARFPPESCSQEEASERG
myc Homo sapiens												PPHSPVLVKRCHVS--
L-myc-2 Homo sapiens												ARFPPESCFQEGAPKRM
N-myc Homo sapiens												RAQSSSELTKRCVPI--
myc Bos taurus												PPHSPVLVKRCHVS--
L-Myc Bos taurus												ARFPPESCSQGAPBPG
N-myc Mus musculus												RAQPGELTKRCVPI--
c-myc Mus musculus												PPHSPVLVKRCHVS--
L-myc Mus musculus												ARFPPESCSQEGDPEPG
s-myc Mus musculus												CAQSSSELTKRYDLI--
L-Myc Sus scrofa												ARFPPESCSQGAPBPG
n-Myc Sus scrofa												PPHSPVLVKRCHVS--
N-Myc Sus scrofa												RAPAGELTKRCVPI--

	780	790	800	810	820	830	840	850	860	870	880
TaMYC8A	-SKSGVLV	TR--AAVL	DGDSSEV	NGLCKEEG	TFVLE						
TaMYC9A	-AKQAGG										
TaMYC9B	-AKQAGG										
TaMYC10A	-SKSGVLT	SQ--AALL	GGENG	VDGLCKEQVAPAM							
TaMYC10B	-SKSGVLT	SQ--AALL	GGENG	VDGLCKEQVAPAM							
TaMYC10D	-SKSGVLT	SQ--AALL	GGENG	VDGLCKEQVAPAM							
TaMYC9D	-AKQAGG										
TaMYC8D	-SKSGVLV	TR--AAVL	DGDSSEV	NGLCKEEG	TFVLE						
TaMYC3D	-TRPSTGT	GA--PAKSE	SDHSDLEASVREVE	SSRVVP							
TaMYC3B	-TRPSTGT	GA--PAKSE	SDHSDLEASVREVE	SSRVVP							
TaMYC12B	-TRPSCFI	AW--RRSLE	LKDMVVRVTDTEES	SKLLKKI							
TaMYC5B	-SRSSCFT	AW--KRSLD	STEDVDTSVAGES	SKLLKKV							
TaMYC5D	-SRSSCFT	AW--KRSLD	STKDVAASVAGES	SKLLKKV							
TaMYC4A	DSSTSCGTQIQREDHALRLEESAIPDPF	GGREFSLTSVEEGFMTSKMTVSLP									
TaMYC2B	-SHQSSFS	RW--DAGIH	GRRTVAQGTTRQKMKSVLLFFS								
TaMYC3A	-TRPSTGT	GA--PAKSE	SDHSDLEASVREVE	SSRVVP							
TaMYC4D	DSSTSCGTQIQREDHALSLEESTIPDPS	GGREFSPTSVEEGFMTSKMTVSLP									
TaMYC7D	-SRPSCFT	VW--KRSSD	WEDMDVRDLGES	SKLLKKV							
TaMYC4B	DSSTSCGTQIQREDHALRLEESAIPDPF	GGREFSPASVKEGFMTSKMTVSLP									
TaMYC11D	-SRPSCFT	AW--KGSSE	LKYVPGQVVGES	SKLLTKV							
TaMYC1	-SRSSCFT	AW--KRSWD	SAEDMATLVARE	SKLLKKA							
TaMYC2A	-SLQSSFS	RW--DAGIH	GRRTVAQGTTRQKMKSVLLFFS								
TaMYC8B	-SKSGVLV	TR--AAVL	DGDSSEV	NGLCKEEG	TFVLE						
TaMYC6D											
TaMYC7B	-SRPSCFT	VW--KRSSD	WEDMDVRDPGES	SKLLKKV							
TaMYC7A	-TRPSCFI	AW--RRSTE	SKEADARVTEES	SKLLKKI							
BdMYC1	-SHQSSFS	TW--HPTML	QQGRTATGAGGTTQORMLGSLFNNA	AAAA							
BdMYC2	-SHQSSFS	TW--HPTML	QQGRTATGAGGTTQORMLRVLFNNA	AAAA							
BdMYC3	EDHSLRLLE	EWVSP	DPSGGQEFSPISVNEGFTSPKINLSFP								
BdMYC4	-SKSGVLV	AR--TAVLD	GESSEV	NGLCKEEG	APPLI						
BdMYC5	-AKQAGG										
BdMYC6	RAESGSGEG										
BdMYC7	-TRPSTGT	GA--PAKSE	SDHSDLEASVREVE	SSRVVP							
OsMYC1	-SKPGVLT	KK--PAGID	GDGA	EV	DGLCKDEGPPPAL						
OsMYC7	-VPEQAGG										
OsMYC4	KPNGSNNSEVNNRQSMYPYGSEQAVKSLIG	CVDDFTGLITEADPDQLLDAIVSKIITGHKQNVDT	SASCSTTVAGFDRPLHSDCHLYTTGPSSGPIFCNFASVAPVAIKT								
OsMYC5	VAESGSGEG										
OsMYC6	NSQVSCFM	AW--KSAKS	NEMAVPVVTGIES	SKLLKKV							
OsMYC7	RSPSSSFV	AW--KRTAD	SDEVQAVPLISGEPP	SKLLKKAV							
OsMYC72	-TRPSTGT	GA--PAKSE	SDHSDLEASVREVE	SSRVVAPP							
AtMYC3											
AtMYC5	-VKQSFEEN										
AtMYC4	DSNHSDLE										
AtEGL3	-DKRSSFT	RW--KRSSS	VKTLGEKSKMIKKIL								
AMS	-DGIPVIG										
AtTT8											
AtMYC2	NKKRSMV	LNEDK	VLSFGDKTAGESDHS	DLASVYKE							
AtMYC1	-EPGSSFL	RW--KQCE	QQVSGFVQKKKSNVLRKI								
L-Myc Homo sapiens	-PQEEVLE										
myc Homo sapiens	-HQHNYA										
L-myc-2 Homo sapiens	PRKEALER										
N-myc Homo sapiens	-HQHNYA	AP--SPY	VESEDAPPQKKIKSEASEP	PKSVI							
myc Bos taurus	-HQHNYA										
L-Myc Bos taurus	PREDGLE										
N-myc Mus musculus	-HQHNYA	AP--SPY	VESEDAPPQKKIKSEASEP	PKSVV							
c-myc Mus musculus	-HQHNYA										
L-myc Mus musculus	PQEEAPEI										
s-myc Mus musculus	-QEQHNYA										
L-Myc Sus scrofa	-PQAEPL										
n-Myc Sus scrofa	-HQHNYA										
N-Myc Sus scrofa	-HQHNYA	AP--SPY	VESEDAPPQKKIKSEASEP	PKSVV							

Basic Helix





Leucine zipper

	1110	1120	1130	1140	1150	1160	1170	1180	1190	1200	1210	
TaMYC8A	-----	-EVDIQVV-	QDEVLRVMSPL	NHPVKKVFEAFEE-	ADVRVGESKLT	GNNGTVVHSFII	-----	KCPGSEQ-QTREK	VIAMSRAMSSV--			
TaMYC9A	-----	-SVEVKAM-	QDEVVLRVSTPLD	AHPISGFLSAMRD-	SQLEVVASSMAVA	DDTVHTTLVV	-----	RSAGPER-LTAE	AVLAATSRGVMSAT			
TaMYC9B	-----	-SVEVKAM-	QDEVVLRVSTPLD	AHPISGFLSAMRD-	SQLEVVASSMAVA	DDTVHTTLVV	-----	RSAGPER-LTAE	TVLAATSRGVMSAT			
TaMYC10A	-----	-EVDIQVV-	QDEVLRVMSPM	DNYPIANNVFOAFEE-	AEVRVGESKLT	SNNGKVMHSFVI	-----	KSPGSEQ-QTREK	LIAMSRAMNSM--			
TaMYC10B	-----	-EVDIQVV-	QDEVLRVMSPM	DNYPIANNVFOAFEE-	AEVRVGESKLT	SNNGKVMHSFVI	-----	KSPGSEQ-QTREK	LIAMSRAMNSM--			
TaMYC10D	-----	-EVDIQVV-	QDEVLRVMSPM	DNYPIANNVFOAFEE-	AEVRVGESKLT	SNNGKVMHSFVI	-----	KSPGSEQ-QTREK	LIAMSRAMNSM--			
TaMYC9D	-----	-EVDIQVV-	QDEVVLRVSTPLD	AHPISGFLSAMRD-	SQLEVVASSMAVA	DDTVHTTLVV	-----	RSAGPER-LTAE	TVLAATSRGVMSAT			
TaMYC8D	-----	-EVDIQVV-	QDEVLRVMSPL	NHPVKKVFEAFEE-	ADVRVGESKLT	GNNGTVVHSFII	-----	KCPGSEQ-QTREK	VIAMSRAMSSV--			
TaMYC3D	GMHDNGARCHAVEIEAKII	-----	GDEAMIRVQCH	KRNHPAAKIMTALRE-	LDLVYHASVSVVK	DMIQQQVAV	-----	KMATRVYSQDQ	LNAAIYGRDAEPGT			
TaMYC3B	GMHDNGARCHAVEIEAKII	-----	GDEAMIRVQCH	KRNHPAAKIMTALRE-	LDLVYHASVSVVK	DMIQQQVAV	-----	KMATRVYSQDQ	LNAAIYGRDAEPGT			
TaMYC12B	-----	-EVDIQVV-	QDEVLRVMSPL	NHPVKKVFEAFEE-	ADVRVGESKLT	GNNGTVVHSFII	-----	KCPGSEQ-QTREK	VIAMSRAMSSV--			
TaMYC5B	DRVLSKEDVPSNVVNVVT	-----	EKEVLLVQCR	WKELIMTQVFDATKS-	LRLEVLVSRAST	PDGLLALKIRA	-----	QFAGPAA-VEPG	MISEALQKATRRR--			
TaMYC5D	ERVLPKDDGSPNIVNVVT	-----	DKEVLLVQCR	WKELIMTQVFDATKS-	LRLEVLVSRAST	PDGLLALKIRA	-----	QFAGPGA-VEPG	MISEALQKATRRR--			
TaMYC4A	-----	-FLRVEEL-	EEPGHLLIEL	CKEYD-VFFETAHLFKG-	DEVSILKGELE	HRSGQLWARFVV	-----	EASKCSNQMQ	ILCPMHLLQRR--			
TaMYC2B	SSGSSSSAPLATDVGVSTII	-----	ESDALLELR	CPDRRGILVTIMQAL	DEQRLVTSVQAS	DHGVLAEMRA	-----	-----	KVQFLVVRSSV--			
TaMYC3A	GMHDNGARCHAVEIEAKII	-----	GDEAMIRVQCH	KRNHPAAKIMTALRE-	LDLVYHASVSVVK	DMIQQQVAV	-----	KMATRVYSQDQ	LNAAIYGRDAEPGT			
TaMYC4D	-----	-FLRVEEL-	EEPGHLLIEL	CKEYD-VFFETAHLFKG-	DEVSILKGELE	HRSGQLWARFVV	-----	EASKCSNQMQ	ILCPMHLLQRR--			
TaMYC7D	ESEREDDDGPTNVVNVVMM	-----	DNEVILEVQCR	WKELIMTQVFDATKS-	LRLEIVSVHT	STPGGILELKIRATH	QVSTSPPPSKVAAGSGTVAPGMITEALQKATGNRWQ	-----	-----			
TaMYC4B	ELE	-----	EPGHLLIEL	CKEYD-VFFETAHLFKG-	DEVSILKGELE	HRSGQLWARFVV	-----	EASKCSNQMQ	ILCPMHLLQRR--			
TaMYC11D	-----	-KAPGLESP	SNVANVMM	-----	DKVVLLEVQCR	WKELIMTQVFDATKS-	LRLEIVSVQASTSGGRLDLKIRANQ	-----	QLAAGSAIVAPGATEALQKAT			
TaMYC1	ERVLPKDDGLSSVINNVVT	-----	DNEVILEVQCR	WKELIMTQVFDATKS-	LRLEVLVSRAST	PDGLLALKIRA	-----	QFAGPGV-VETG	MISEALQKATRRP--			
TaMYC2A	-----	-EVDIQVV-	QDEVLRVMSPL	NHPVKKVFEAFEE-	ADVRVGESKLT	GNNGTVVHSFII	-----	KCPGSEQ-QTREK	VIAMSRAMSSV--			
TaMYC8B	-----	-EVDIQVV-	QDEVLRVMSPL	NHPVKKVFEAFEE-	ADVRVGESKLT	GNNGTVVHSFII	-----	KCPGSEQ-QTREK	VIAMSRAMSSV--			
TaMYC6D	ERVLTKDDGLSSVINNVVT	-----	DKEVLLVQCR	WKELIMTQVFDATKS-	LRLEVLVSRAVR	-----	VVIMVYDF	-----	-----			
TaMYC7B	ESEREDDGSPNIVVNVMM	-----	DNEVILEVQCR	WKELIMTQVFDATKS-	LRLEIVSVHT	STPGGILELKIRATH	-----	QVAGFATVAPGMITEALQKATGNRWQ	-----			
TaMYC7A	-----	-SPR	-----	-----	-----	-----	-----	-----	-----			
BdMYC1	SAPPSSSLAAAAEIVGVSTII	-----	ESDALLELR	CPDRRGILVTIMQAL	DEQRLVTSVQAS	DHGVLAELRA-K	-----	VREYHGRSSIS	EVKRAIALIITSSG--			
BdMYC2	ASSSSGSPVPATDVGVSTII	-----	ESDALLELR	CPDRRGILVTIMQAL	DEQRLVTSVQAS	DHGVLAELRA-K	-----	VREYHGRSSIS	EVKRAIALIITSSG--			
BdMYC3	-----	-FLRVEEL-	EEPGHLLIEL	CKEYD-VFFETAHLFKG-	DEVSILKGELE	HRSGQLWARFVV	-----	EAPQGLKQM	ILCPMHLLQRR--			
BdMYC4	-----	-EVDIQVV-	QDEVLRVMSPL	NHPVKKVFEAFEE-	ADVRVGESKLT	GNNGTVVHSFII	-----	KCPGSEQ-QTREK	VIAMSRAMNSV--			
BdMYC5	-----	-SVEVKAM-	QDEVVLRVSTPLD	AHPISGFLSAMRD-	SQLEVVASSMAVA	DDTVHTTLVV	-----	RSAGPDR-LTAE	TVLAATSRGVMSAT			
BdMYC6	GEQEEQEQDMEPQVVRVQVGGGSEFFLQVLCSHKEGRFVIMDEIAA	-----	GLQVTVNVNTSY	NKLVLNVFRA	-----	-----	-----	VMRENEAAV	PADRVDRSLLEVTRYMYG			
BdMYC7	GVHDGSGPRCHAVEIEAKII	-----	GDEAMIRVQCH	KRNHPAAKIMTALRE-	LDLVYHASVSVVK	DMIQQQVAV	-----	KMPNRVYSQDQ	LNAAIYGRDAEPGA			
OsMYC1	-----	-EVDIQVV-	QDEVLRVMSPL	NHPVKKVFEAFEE-	ADVRVGESKLT	GNNGTVVHSFII	-----	KCPGSEQ-QTREK	VIAMSRAMNSG--			
OsMYC7	-----	-AVGVKAM-	QDEVVLRVSTPLD	AHPISGFLSAMRD-	SQLEVVASSMAVA	DDTVHTTLVV	-----	RSAGPER-LTAE	TVLAATSRGVMSAT			
OsMYC4	WAFEVGTRSMTCIIIVEDI	-----	NPPROMLVN	MDCKERS-IFLEIADQIRG-	GLDLILKGV	MEVRKDKINARFAV	-----	EANKDVT	RMIEFLSVHILEPSTG			
OsMYC5	KVGGGGGGGHRMEPQLEVRQVQGNEL	-----	LVQVLWEH	KPGGFVRMDAMNA	-----	GLQVTVNVNTSY	NKLVLNVFRA	-----	MVRDSEVAVQADRVDRSLLEVTRYMYG			
OsMYC6	VSGGGDAGREHHHVNVTVT	-----	DKVVLLEVQCR	WKELIMTQVFDATKS-	LRLEVLVSQAST	PDGLLGLKIQ	-----	KFACSGS-VAPG	MISEALQKATGG--			
OsMYC7	DDTDGERRRHCVSNVNVVMM	-----	DNEVILEVQCR	WKELIMTQVFDATKS-	LRLEVLVSQAST	PDGLLGLKIQ	-----	KFASSAA-VEPG	-----			
OsMYC72	GGGDDGARCHAVEIEAKII	-----	GDEAMIRVQCH	KRNHPAAKIMTALRE-	LDLVYHASVSVVK	DMIQQQVAV	-----	KMASRVYSQDQ	LNAAIYGRDAEPGT			
AtMYC3	SNQDSTASSIEMEIVDKII	-----	GWDVMIRVQCH	KRNHPAAKIMTALRE-	LDLVNHNASLS	VVNDLMIQQATV	-----	KMGSOFFNH	QDLKVALTEKVGEC			
AtMYC5	VCKYEEKASEMMKIEVKIM	-----	ESDDAMVRV	ESRKDHHPGARIMNALMD	-----	LDLVNHNASLS	VVNDLMIQQATV	-----	KMLRIYKQEL	LRDLMSKIS		
AtMYC4	CLNQESSVLIEMEIVDKII	-----	GWDVMIRVQCH	KRNHPAAKIMTALRE-	LDLVNHNASLS	VVNDLMIQQATV	-----	KMGNOFFTQ	DLKVALTEKVGEC			
AtEGL3	EPADIGYAGLTDLNIRHSL	-----	GNEVVIEVRC	AWREGILLETMDVISD	-----	LNDDSHSVQ	SSDGDGLCLTVNC	-----	KHKGTKI-ATTG	MIQEAQORVAWIC		
AMS	DLENSNDKGQEMEPQVQVQDLGRFFVVKVIEYKPGGFTRLEAIDS	-----	LGLEVNANT	RYLSIVSNVFKV	-----	-----	-----	EKNDNEMVQ	AEHVRNLSLEITRNTSR			
AtTT8	-----	-KTSEEVE	SVSTII	-----	ENDVLEVMRC	BYRGLLILQVLE	HE	-----	KVRGKKA	-----	SIAEVKRAHQVHLHDTN	
AtMYC2	SSSCSSIKFPVGMIEIVDKII	-----	GWDVMIRVQCH	KRNHPAAKIMTALRE-	LDLVNHNASLS	VVNDLMIQQATV	-----	KMGFRIYTQ	DLKVALTEKVGEC			
AtMYC1	ETEQTVTFVRDKTHLRVKEK	-----	ETEVEVIEVRC	SYRQYIVADIMETLSN	-----	LNDDAFSVRS	HTLNKFLTLNLKA	-----	KFRGAHV-ASVGM	IKREARRVIGDLF		
L-Myc Homo sapiens	-----	-----	-----	LRCRQQQ	-----	-----	LOKRIAYLTGY	-----	-----			
myc Homo sapiens	-----	-----	-----	LRKRREQ	-----	-----	LKHKEQLRNSCA	-----	-----			
L-myc-2 Homo sapiens	-----	-----	-----	LRCRQQQ	-----	-----	LOKRIAYLSSY	-----	-----			
N-myc Homo sapiens	-----	-----	-----	LRARQQQ	-----	-----	LKKKEBHARTC	-----	-----			
myc Bos taurus	-----	-----	-----	LOKRREQ	-----	-----	LKHKEQLRNSCA	-----	-----			
L-Myc Bos taurus	-----	-----	-----	LRCRQQQ	-----	-----	LOKRIAYLSGY	-----	-----			
N-myc Mus musculus	-----	-----	-----	LRARQQQ	-----	-----	LKKKEBHARTC	-----	-----			
c-myc Mus musculus	-----	-----	-----	LRKRREQ	-----	-----	LKHKEQLRNSCA	-----	-----			
L-myc Mus musculus	-----	-----	-----	LRCRQQQ	-----	-----	LOKRIAYLSGY	-----	-----			
s-myc Mus musculus	-----	-----	-----	LRARQQQ	-----	-----	LKKKEBHARTC	-----	-----			
L-Myc Sus scrofa	-----	-----	-----	LRARQQQ	-----	-----	LKKKEBHARTC	-----	-----			
n-Myc Sus scrofa	-----	-----	-----	LRKRREQ	-----	-----	LKHKEQLRNSCA	-----	-----			
N-Myc Sus scrofa	-----	-----	-----	LRARQQQ	-----	-----	LKKKEBHARTC	-----	-----			

	1220	1230	1240	1250	1260	1270
TaMYC8A
TaMYC9A	PSP-----	-----	-----	-----	-----	-----
TaMYC9B	PSP-----	-----	-----	-----	-----	-----
TaMYC10A	-----	-----	-----	-----	-----	-----
TaMYC10B	-----	-----	-----	-----	-----	-----
TaMYC10D	-----	-----	-----	-----	-----	-----
TaMYC9D	PSP-----	-----	-----	-----	-----	-----
TaMYC8D	-----	-----	-----	-----	-----	-----
TaMYC3D	AMQIR-----	-----	-----	-----	-----	-----
TaMYC3B	AMQIR-----	-----	-----	-----	-----	-----
TaMYC12B	-----	-----	-----	-----	-----	-----
TaMYC5B	-----	-----	-----	-----	-----	-----
TaMYC5D	-----	-----	-----	-----	-----	-----
TaMYC4A	-----	-----	-----	-----	-----	-----
TaMYC2B	-----	-----	-----	-----	-----	-----
TaMYC3A	AMQIR-----	-----	-----	-----	-----	-----
TaMYC4D	-----	-----	-----	-----	-----	-----
TaMYC7D	N-----	-----	-----	-----	-----	-----
TaMYC4B	-----	-----	-----	-----	-----	-----
TaMYC11D	-----	-----	-----	-----	-----	-----
TaMYC1	-----	-----	-----	-----	-----	-----
TaMYC2A	-----	-----	-----	-----	-----	-----
TaMYC8B	-----	-----	-----	-----	-----	-----
TaMYC6D	-----	-----	-----	-----	-----	-----
TaMYC7B	N-----	-----	-----	-----	-----	-----
TaMYC7A	-----	-----	-----	-----	-----	-----
BdMYC1	-----	-----	-----	-----	-----	-----
BdMYC2	-----	-----	-----	-----	-----	-----
BdMYC3	-----	-----	-----	-----	-----	-----
BdMYC4	-----	-----	-----	-----	-----	-----
BdMYC5	PSP-----	-----	-----	-----	-----	-----
BdMYC6	AGGVWPAAMAPLPAMEAPMMVMAAEAKLDGGGEAGEHHYQLQQQQLLGGYHQQQLLYYLGLD					
BdMYC7	PVPIR-----	-----	-----	-----	-----	-----
OsMYC1	-----	-----	-----	-----	-----	-----
OsMYC7	SP-----	-----	-----	-----	-----	-----
OsMYC4	SSILSAGVENTSLPRDSFFPSSIIPASGFSNCL-----					
OsMYC5	GVWPSPQEEEDDAKFDDGGDGGQAAAAAAGGGEHYHDEVGGGYHOHLHYLAFD-----					
OsMYC6	-----	-----	-----	-----	-----	-----
OsMYC7	-----	-----	-----	-----	-----	-----
OsMYC72	AAR-----	-----	-----	-----	-----	-----
AtMYC3	-----	-----	-----	-----	-----	-----
AtMYC5	-----	-----	-----	-----	-----	-----
AtMYC4	-----	-----	-----	-----	-----	-----
AtEGL3	-----	-----	-----	-----	-----	-----
AMS	GWQDDQMATGSMQNEKNEVDYQHYYDDHQHHNGHHHPFDHQMNQSAHHHHHHQHINHYHNQ--					
AtTT8	L-----	-----	-----	-----	-----	-----
AtMYC2	-----	-----	-----	-----	-----	-----
AtMYC1	-----	-----	-----	-----	-----	-----
L-Myc Homo sapiens	-----	-----	-----	-----	-----	-----
myc Homo sapiens	-----	-----	-----	-----	-----	-----
L-myc-2 Homo sapiens	-----	-----	-----	-----	-----	-----
N-myc Homo sapiens	-----	-----	-----	-----	-----	-----
myc Bos taurus	-----	-----	-----	-----	-----	-----
L-Myc Bos taurus	-----	-----	-----	-----	-----	-----
N-myc Mus musculus	-----	-----	-----	-----	-----	-----
c-myc Mus musculus	-----	-----	-----	-----	-----	-----
L-myc Mus musculus	-----	-----	-----	-----	-----	-----
s-myc Mus musculus	-----	-----	-----	-----	-----	-----
L-Myc Sus scrofa	-----	-----	-----	-----	-----	-----
n-Myc Sus scrofa	-----	-----	-----	-----	-----	-----
N-Myc Sus scrofa	-----	-----	-----	-----	-----	-----