

Supplementary material

**Effects of cadmium stress on growth,  
physiological characteristics, and metabolic  
profiling in rice (*Oryza sativa* L.) by using HPLC-  
QTOF/MS.**

Zhenni Lan<sup>1 †</sup>, Qing He<sup>1 †</sup>, Mingxia Zhang<sup>2</sup>, Huahong Liu<sup>1</sup>, Liusen Fang<sup>1</sup>, Jinfang Nie<sup>1,\*</sup>

<sup>1</sup> College of Chemical and Bioengineering, Guilin University of Technology,  
Guilin 541004, China; lanzhenni2023@126.com (Z.L.); 1020200733@glut.edu.cn  
(Q.H.); liuhuahong1999@126.com (H.L.); fls6568@sina.com (L.F.)

<sup>2</sup> Department of Ecology, College of Life Science and Technology, Jinan  
University, Guangzhou, 510632 China; zhangmingxia@stu2022.jnu.edu.cn

\* Correspondence: [niejinfang@glut.edu.cn](mailto:niejinfang@glut.edu.cn)

<sup>†</sup>These authors contributed equally to this work.

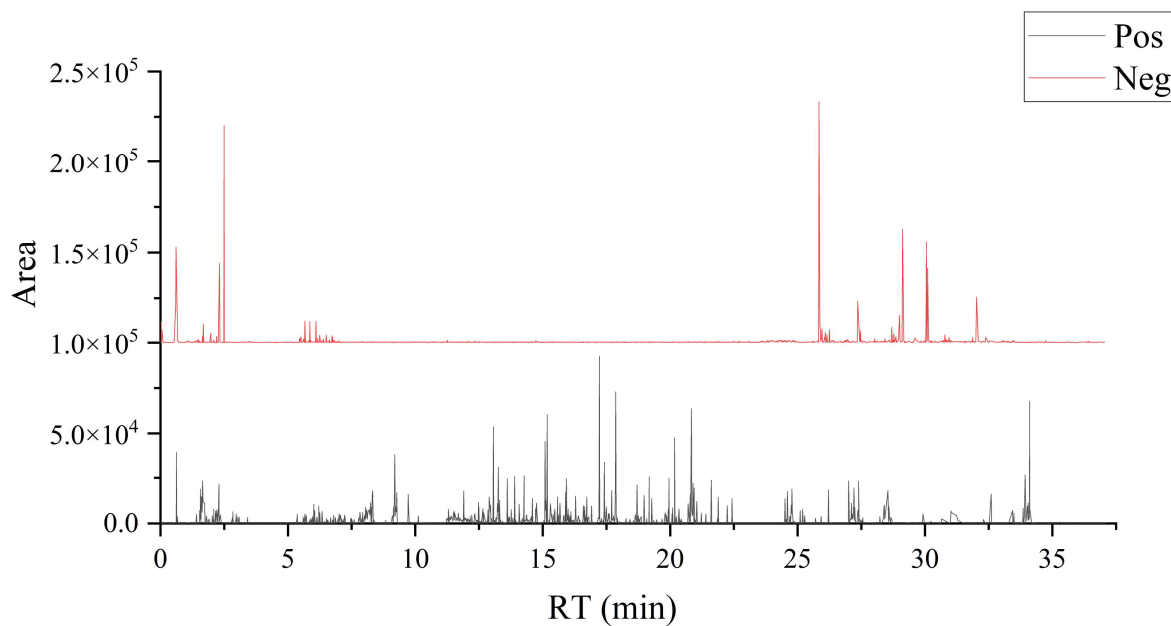


Figure S1. Total ion flow chromatogram of QC samples.

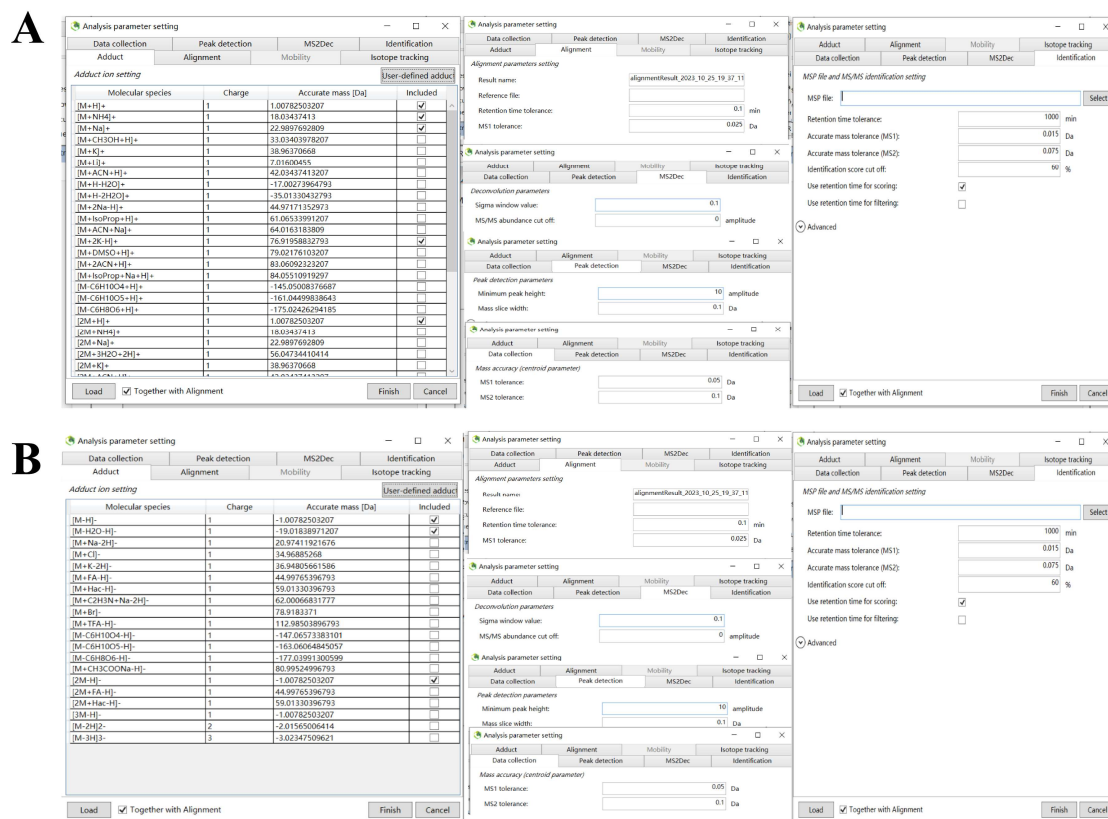


Figure S2. MSDIAL data processing parameter settings for positive (A) and negative (B) ions.

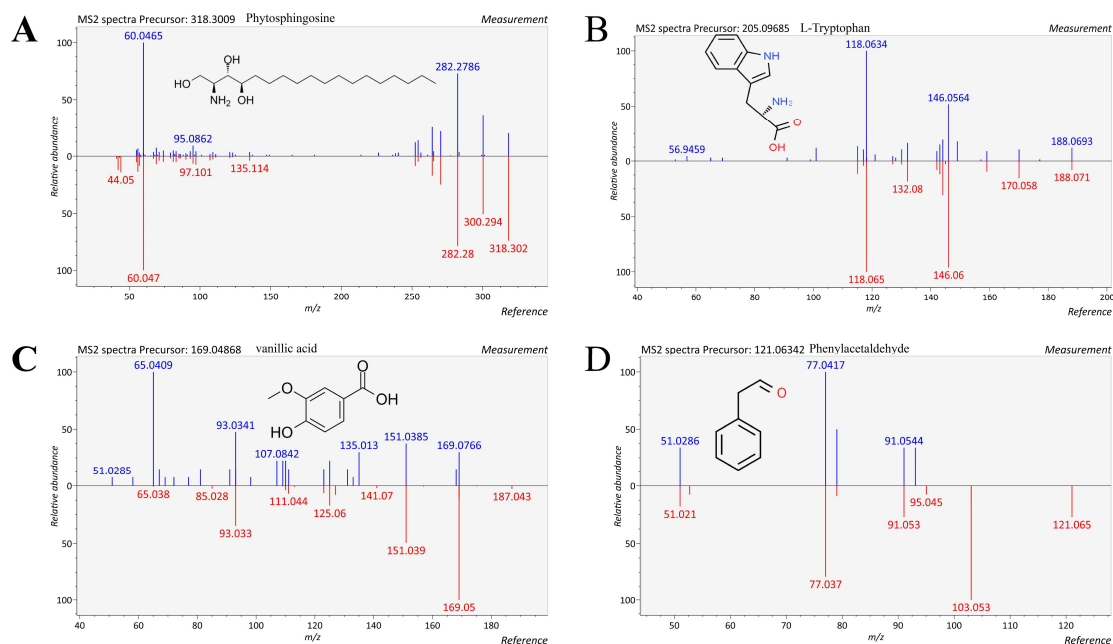


Figure S3. Identification information for the four metabolites with the highest (A, B) and lowest (C, D) matching degrees to the references. The red and blue colors represent references and measurements, respectively.

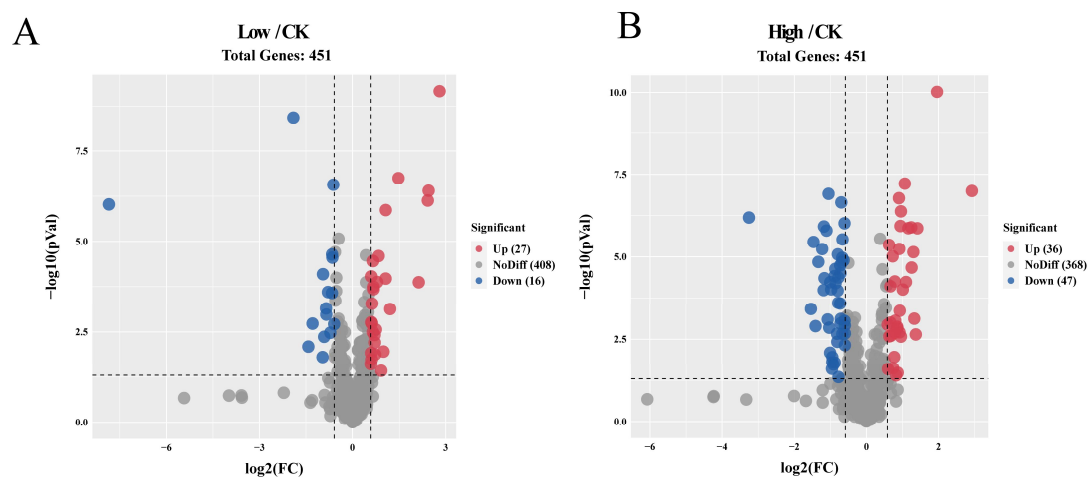


Figure S4. Rice root tissue differential metabolites volcano plots in the Low-group (A) and High-group (B) compared with the CK group. CK: control; Low: 2 mg kg<sup>-1</sup>; High: 10 mg kg<sup>-1</sup>, respectively.

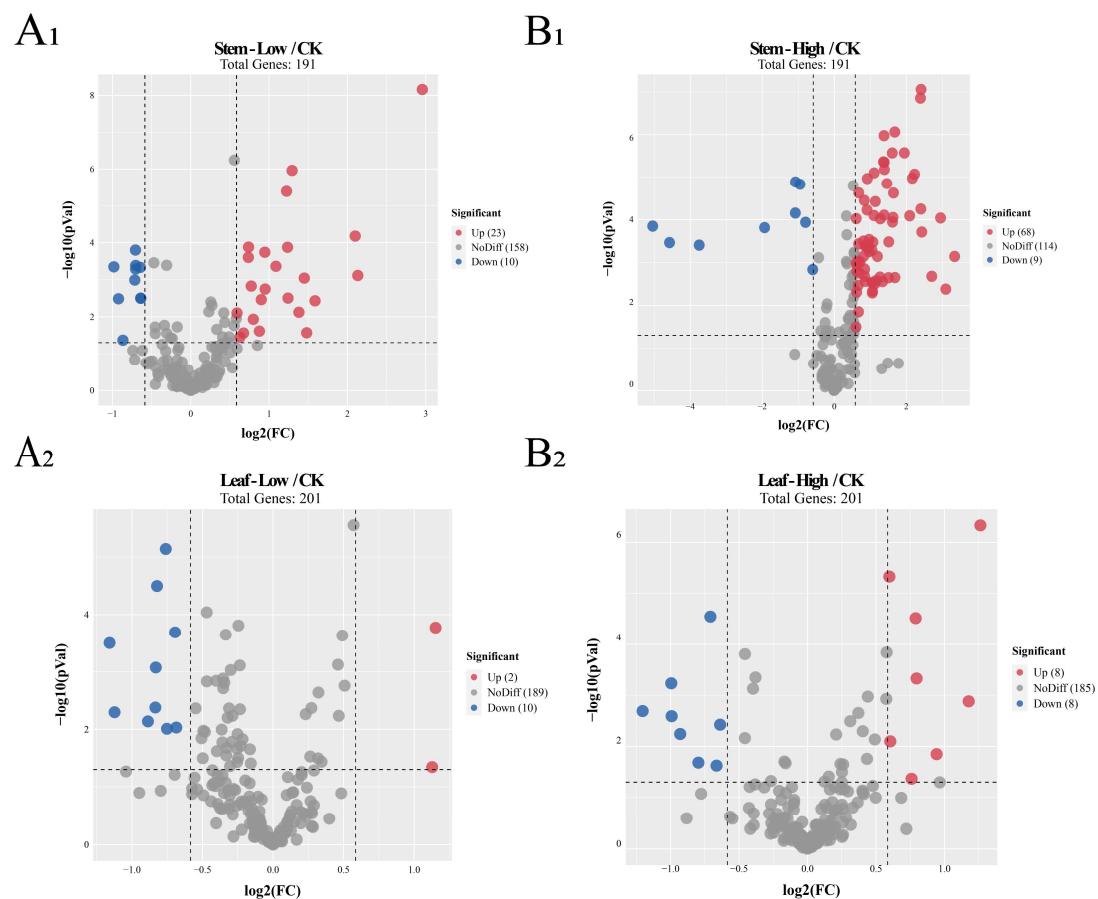


Figure S5. Differential metabolites volcano plots in the Low-group (A) and High-group (B) compared with the CK group, CK: control; Low: 2 mg kg<sup>-1</sup>; High: 10 mg kg<sup>-1</sup>; 1 and 2 represent stems and leaves respectively.