

Supporting information for

## **Pyrene-Based Fluorescent probe for "Off-On-Off" Sequential Detection of Cu<sup>2+</sup> and CN<sup>-</sup> with HeLa Cells Imaging**

Muthaiah Shellaiah<sup>1†</sup>, Parthiban Venkatesan<sup>1†</sup>, Natesan Thirumalaivasan<sup>2\*</sup>, Shu-Pao Wu<sup>1\*</sup>, Kien Wen Sun<sup>1\*</sup>

1. Department of Applied Chemistry, National Yang Ming Chiao Tung University, Hsinchu 300, Taiwan

2. Department of periodontics, Saveetha Dental College and Hospitals, Saveetha Institute of Medical and Technical Sciences (SIMATS), Chennai, Tamil Nadu, India.

†These authors contributed equally to this work.

\* Correspondence: [kwsun@nycu.edu.tw](mailto:kwsun@nycu.edu.tw)<sup>1</sup>, [natesant.sdc@saveetaha.com](mailto:natesant.sdc@saveetaha.com)<sup>2</sup>, [spwu@mail.nctu.edu.tw](mailto:spwu@mail.nctu.edu.tw)<sup>1</sup>

## Table of contents

**Fig. S1.**  $^1\text{H}$  NMR (300 MHz, DMSO) spectrum of probe L. (Page 3)

**Fig. S2.**  $^{13}\text{C}$  NMR (300 MHz, DMSO) spectrum of probe L. (Page 3)

**Fig. S3.** EI Mass spectrum of probe L. (Page 4)

**Fig. S4.** Fluorescence spectra changes of probe L (10  $\mu\text{M}$ ) (a) in absence of  $\text{Cu}^{2+}$  (b) after addition of  $\text{Cu}^{2+}$  in different solvent. (Page 4)

**Fig. S5.** Job plot of the  $\text{Cu}^{2+}$ -L complexes in an ethanol-water ( $v/v = 7/3$ , 5 mM HEPES, pH 7.0) solution. The total concentration of Probe L and  $\text{Cu}^{2+}$  was 5  $\mu\text{M}$ . (Page 5)

**Fig. S6.** Detection limit for titration of  $\text{Cu}^{2+}$  (0~5  $\mu\text{M}$ , respectively) against ratio of fluorescence response for probe L (10  $\mu\text{M}$ ) in ethanol-water ( $v/v = 7/3$ , 5 mM HEPES, pH 7.0). (Page 5)

**Fig. S7.** Fluorescence response of Probe L (10  $\mu\text{M}$ ) to  $\text{CN}^-$  (15  $\mu\text{M}$ ) or 100  $\mu\text{M}$  of other anions (the red bar portion) and to the mixture of other anions (40  $\mu\text{M}$ ) with  $\text{CN}^-$  (15  $\mu\text{M}$ ) (the black bar portion) in ethanol-water ( $v/v = 7/3$ , 5 mM HEPES, pH 7.0) solutions. (Page 6)

**Fig. S8.** Detection limit for titration of  $\text{CN}^-$  (0~15  $\mu\text{M}$ , respectively) against ratio of fluorescence response for L-  $\text{Cu}^{2+}$  (10  $\mu\text{M}$ ) in ethanol-water ( $v/v = 7/3$ , 5 mM HEPES, pH 7.0). (Page 6)

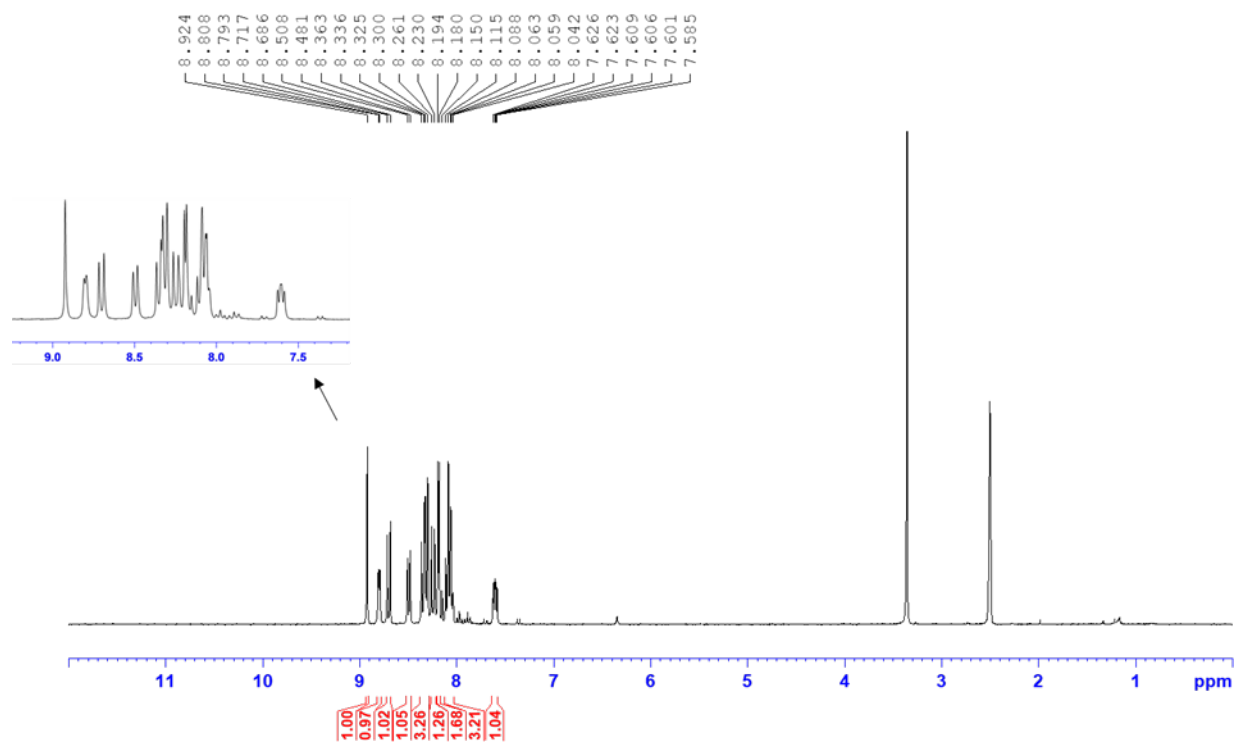
**Fig. S9.**  $^1\text{H}$  NMR (300 MHz) spectra of probe L in the presence of  $\text{Cu}^{2+}$  in  $\text{DMSO-d}_6$  titrated with (0–0.5) equiv. of  $\text{Cu}^{2+}$  in  $\text{D}_2\text{O}$ . (Page 7)

**Fig. S10.** EI Mass spectrum of probe L+ $\text{Cu}^{2+}$  complex. (Page 8)

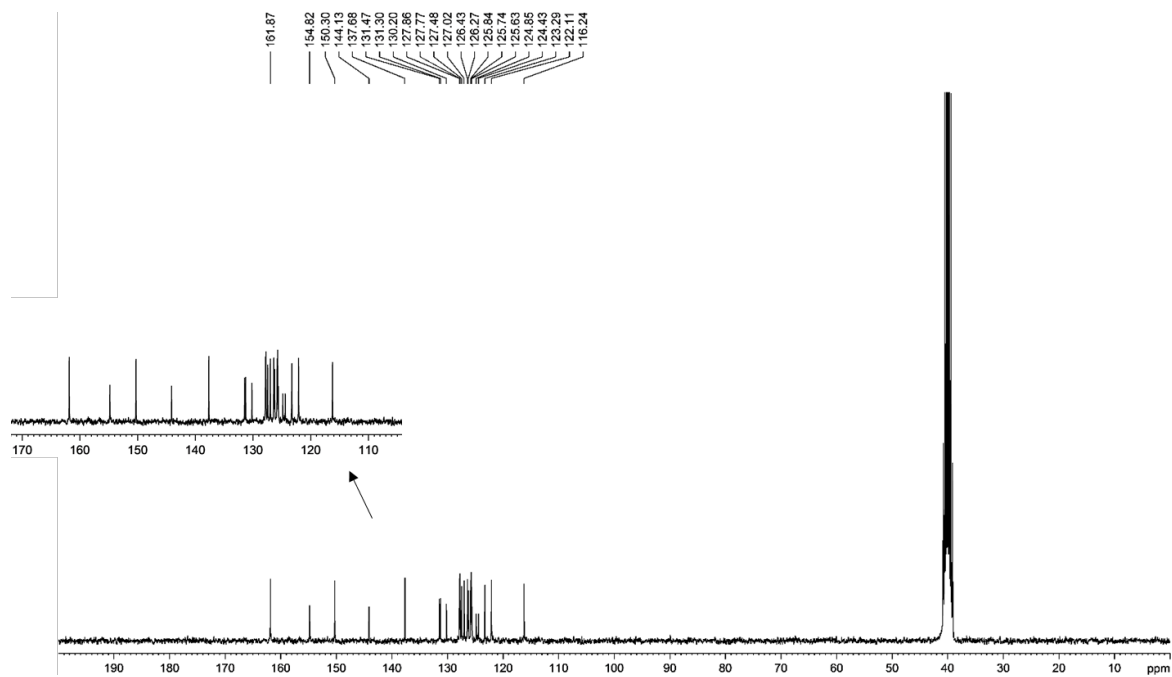
**Fig. S11.**  $^1\text{H}$  NMR (300 MHz) spectra of probe L + $\text{Cu}^{2+}$  in the presence of  $\text{CN}^-$  ions in  $\text{DMSO-d}_6$  titrated with (0–2) equiv. of  $\text{CN}^-$  ions in  $\text{D}_2\text{O}$ . (Page 9)

**Fig. S12.** EI Mass spectrum of probe L+ $\text{Cu}^{2+}$ + $\text{CN}^-$ . (Page 10)

**Fig. S13.** Cell viability values (%) estimated by an MTT assay versus incubation concentrations of Probe L. HeLa cells were cultured in the presence of Probe L (0–50  $\mu\text{M}$ ) at 37  $^\circ\text{C}$  for 24 h. (Page 11)

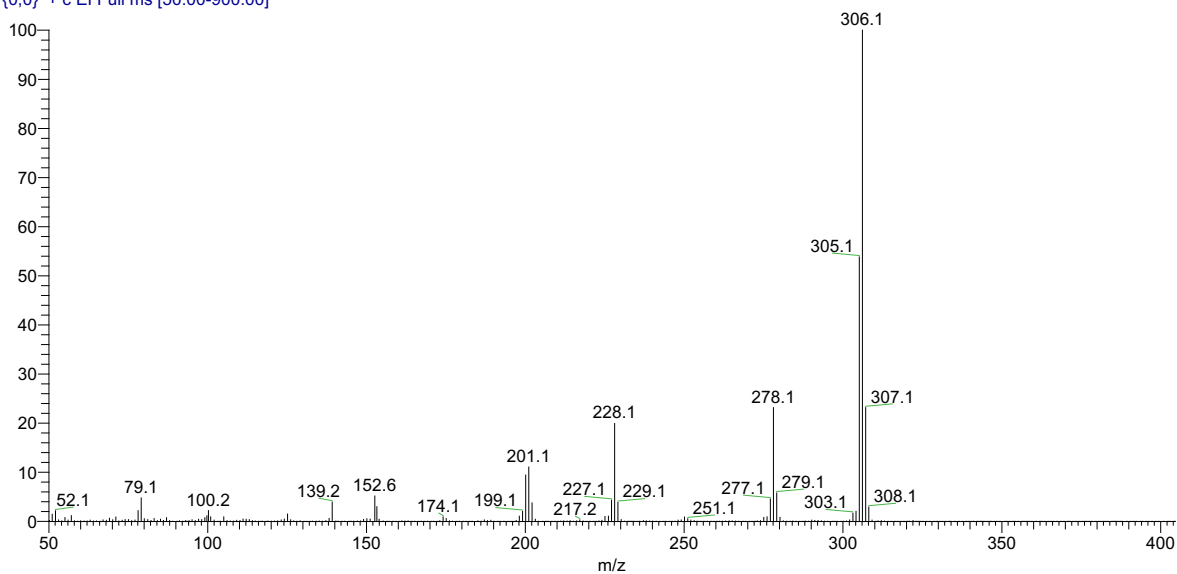


**Fig. S1.** <sup>1</sup>H NMR (300 MHz, DMSO) spectrum of probe L.

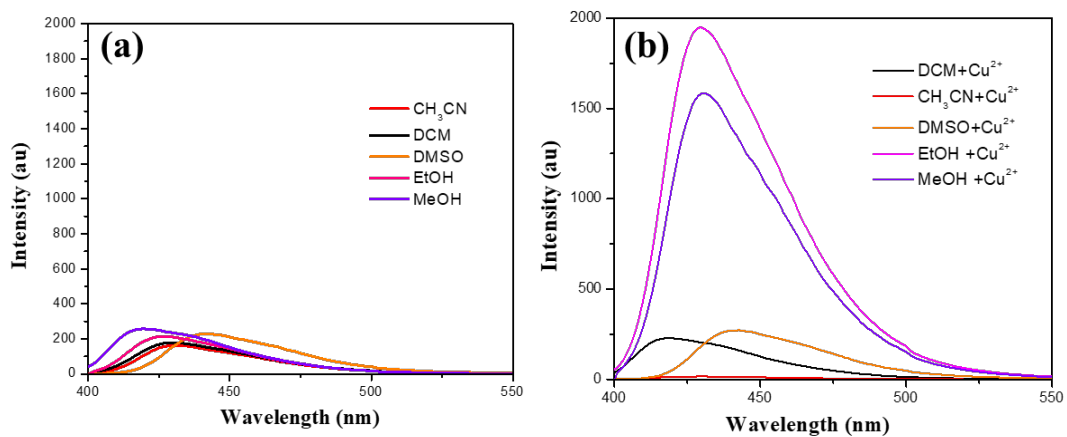


**Fig. S2.** <sup>13</sup>C NMR (300 MHz, DMSO) spectrum of probe L.

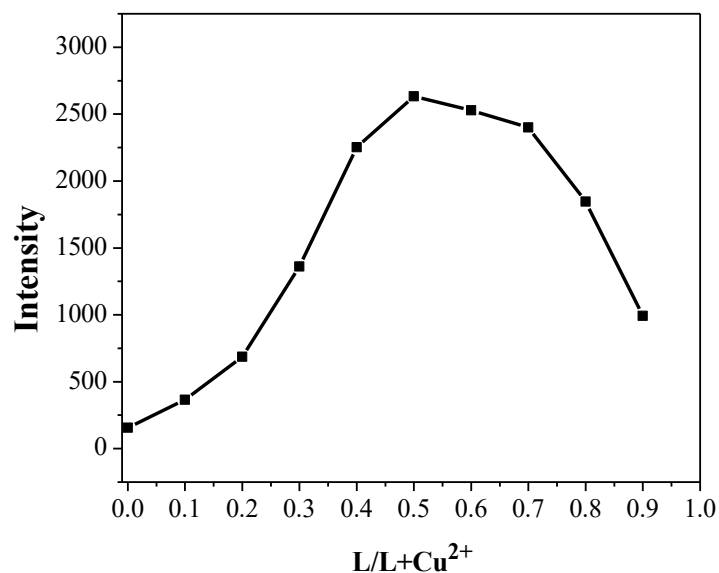
2014082103\_Py #310 RT: 1.09 AV: 1 NL: 4  
T: {0,0} + c EI Full ms [50.00-900.00]



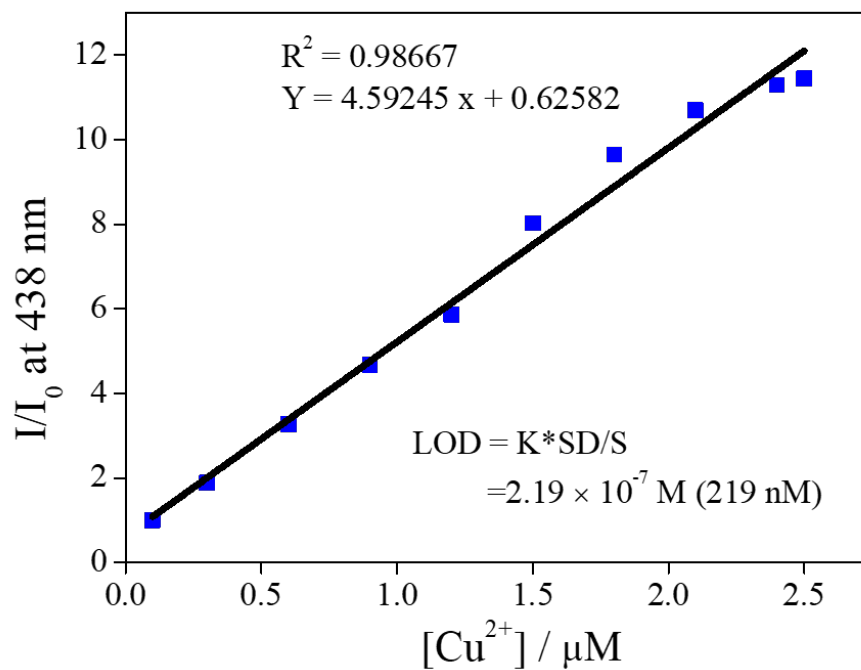
**Fig. S3.** EI Mass spectrum of probe L.



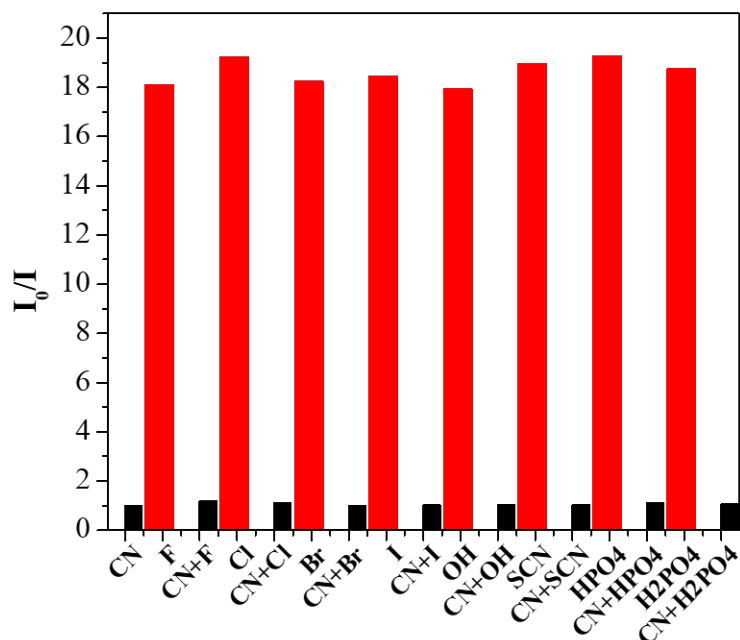
**Fig. S4.** Fluorescence spectra changes of probe L (10  $\mu$ M) (a) in absence of  $\text{Cu}^{2+}$  (b) after addition of  $\text{Cu}^{2+}$  in different solvent. The excitation wavelength was at  $\lambda_{\text{ex}} = 380$  nm with emission and excitation slit = 5 nm.



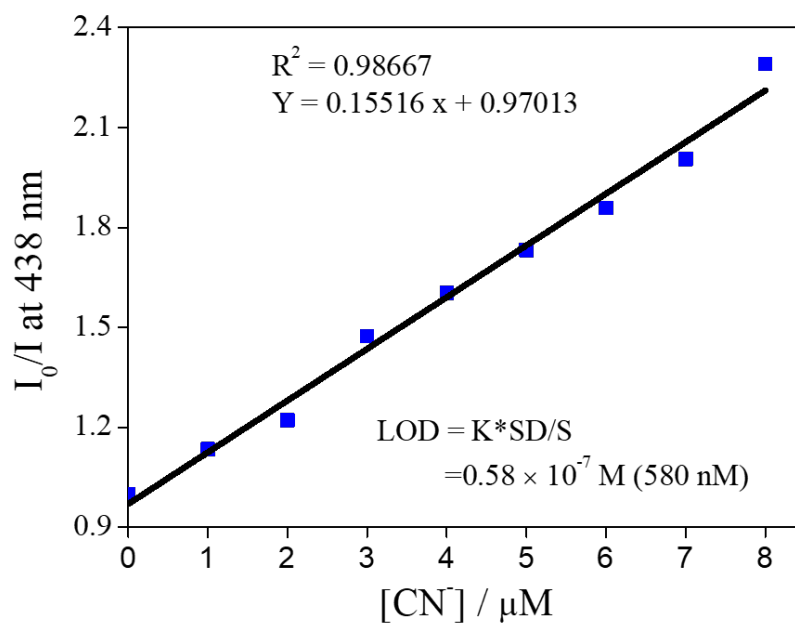
**Fig. S5.** Job plot of the Cu<sup>2+</sup>-L complexes in an ethanol-water (v/v = 7/3, 5 mM HEPES, pH 7.0) solution. The total concentration of Probe L and Cu<sup>2+</sup> was 5  $\mu$ M.



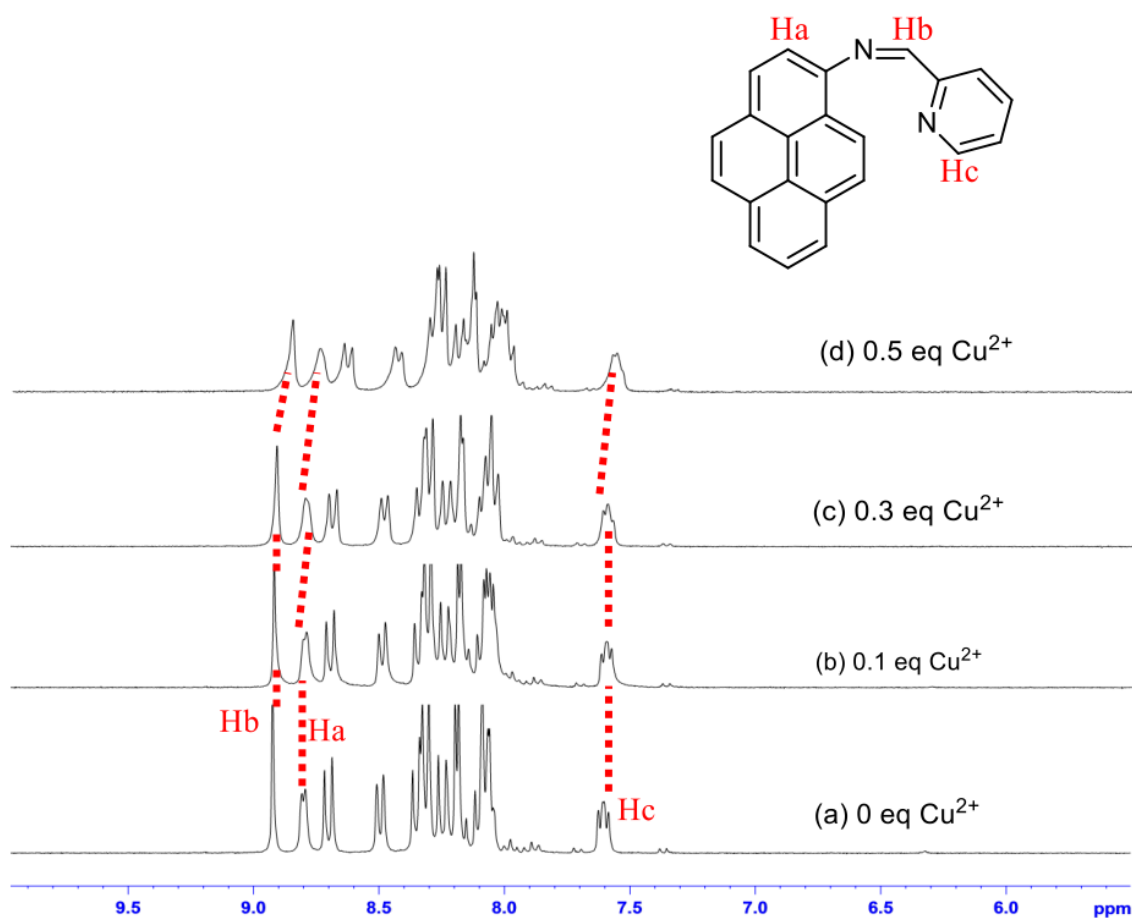
**Fig. S6.** Detection limit for titration of Cu<sup>2+</sup> (0~5  $\mu$ M, respectively) against ratio of fluorescence response for probe L (10  $\mu$ M) in ethanol-water (v/v = 7/3, 5 mM HEPES, pH 7.0).



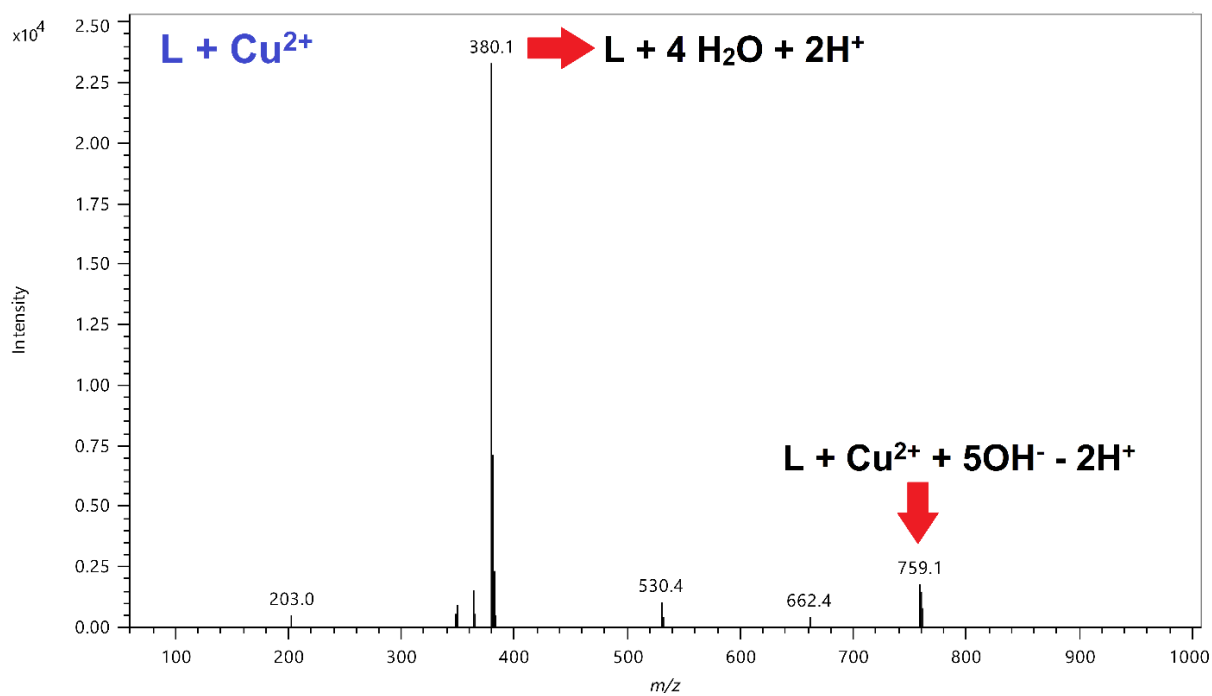
**Fig. S7.** Fluorescence response of Probe L (10  $\mu\text{M}$ ) to  $\text{CN}^-$  (15  $\mu\text{M}$ ) or 100  $\mu\text{M}$  of other anions (the red bar portion) and to the mixture of other anions (40  $\mu\text{M}$ ) with  $\text{CN}^-$  (15  $\mu\text{M}$ ) (the black bar portion) in ethanol-water ( $v/v = 7/3$ , 5 mM HEPES, pH 7.0) solutions.



**Fig. S8.** Detection limit for titration of  $\text{CN}^-$  (0~15  $\mu\text{M}$ , respectively) against ratio of fluorescence response for L-  $\text{Cu}^{2+}$  (10  $\mu\text{M}$ ) in ethanol-water ( $v/v = 7/3$ , 5 mM HEPES, pH 7.0).

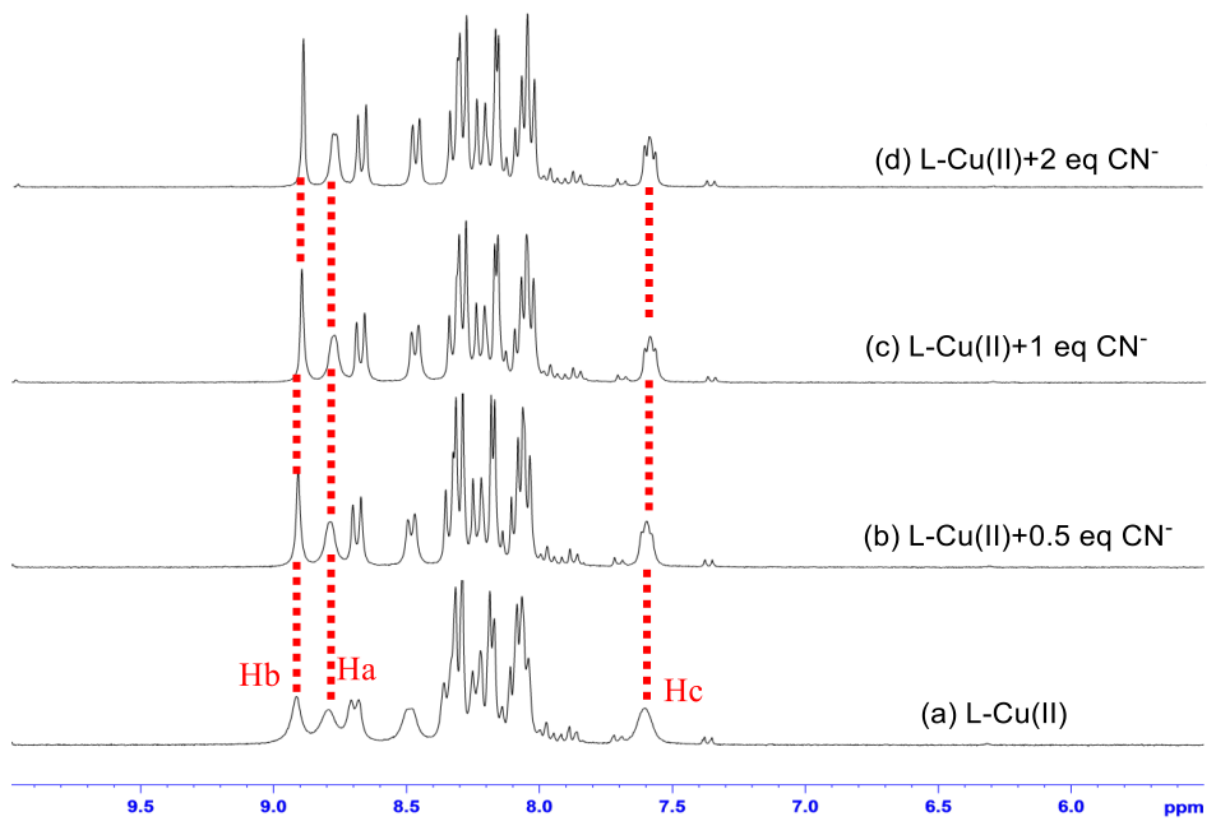


**Fig. S9.** <sup>1</sup>H NMR (300 MHz) spectra of probe L in the presence of Cu<sup>2+</sup> in DMSO-d<sub>6</sub> titrated with (0–0.5) equiv. of Cu<sup>2+</sup> in D<sub>2</sub>O.

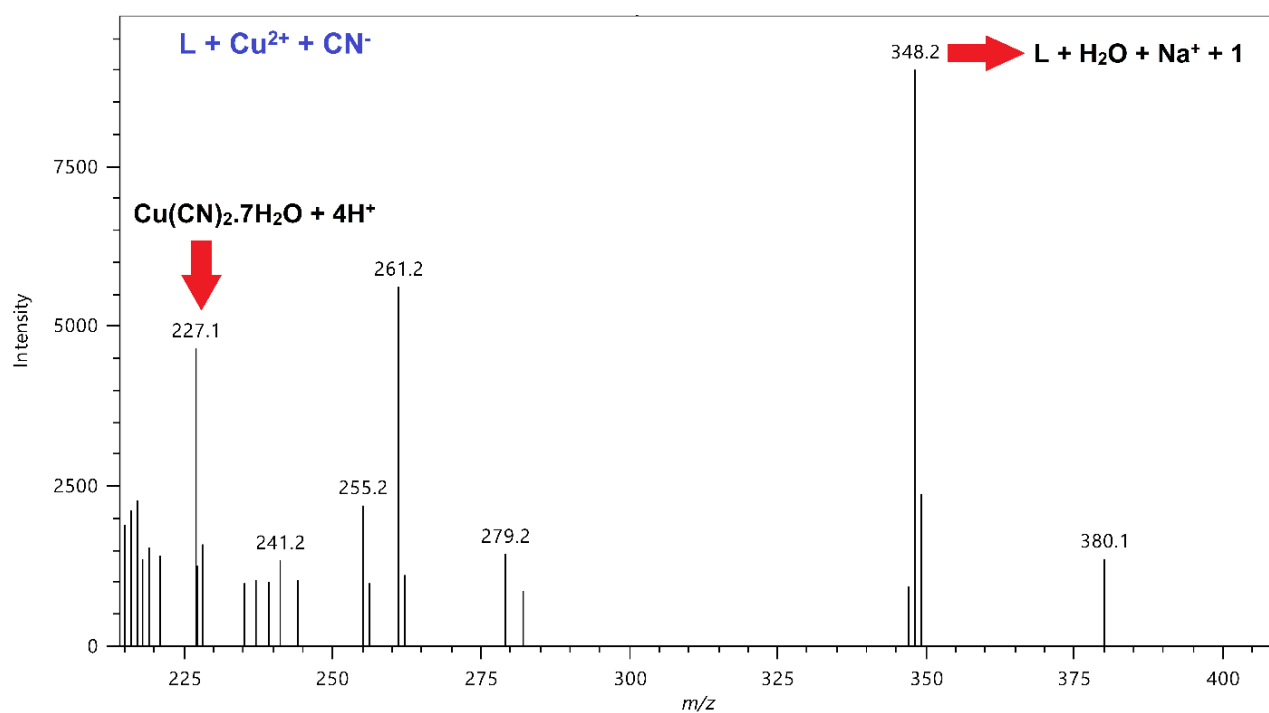


**Fig. S10.** EI Mass spectrum of probe L+Cu<sup>2+</sup> complex.

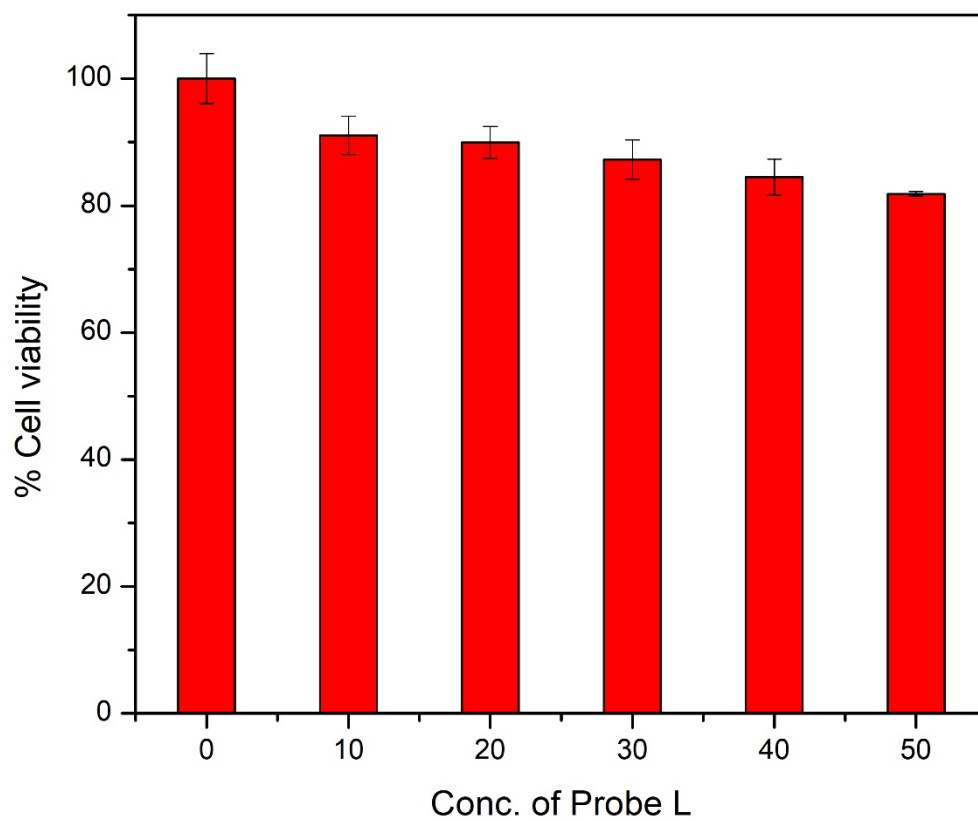




**Fig. S11.**  $^1\text{H}$  NMR (300 MHz) spectra of probe L +  $\text{Cu}^{2+}$  in the presence of  $\text{CN}^-$  ions in  $\text{DMSO-d}_6$  titrated with (0–2) equiv. of  $\text{CN}^-$  ions in  $\text{D}_2\text{O}$ .



**Fig. S12.** EI Mass spectrum of probe  $L-Cu^{2+}+CN^-$ .



**Fig. S13.** Cell viability values (%) estimated by an MTT assay versus incubation concentrations of Probe L. HeLa cells were cultured in the presence of Probe L (0–50  $\mu$ M) at 37  $^{\circ}$ C for 24 h, individually (n=3).