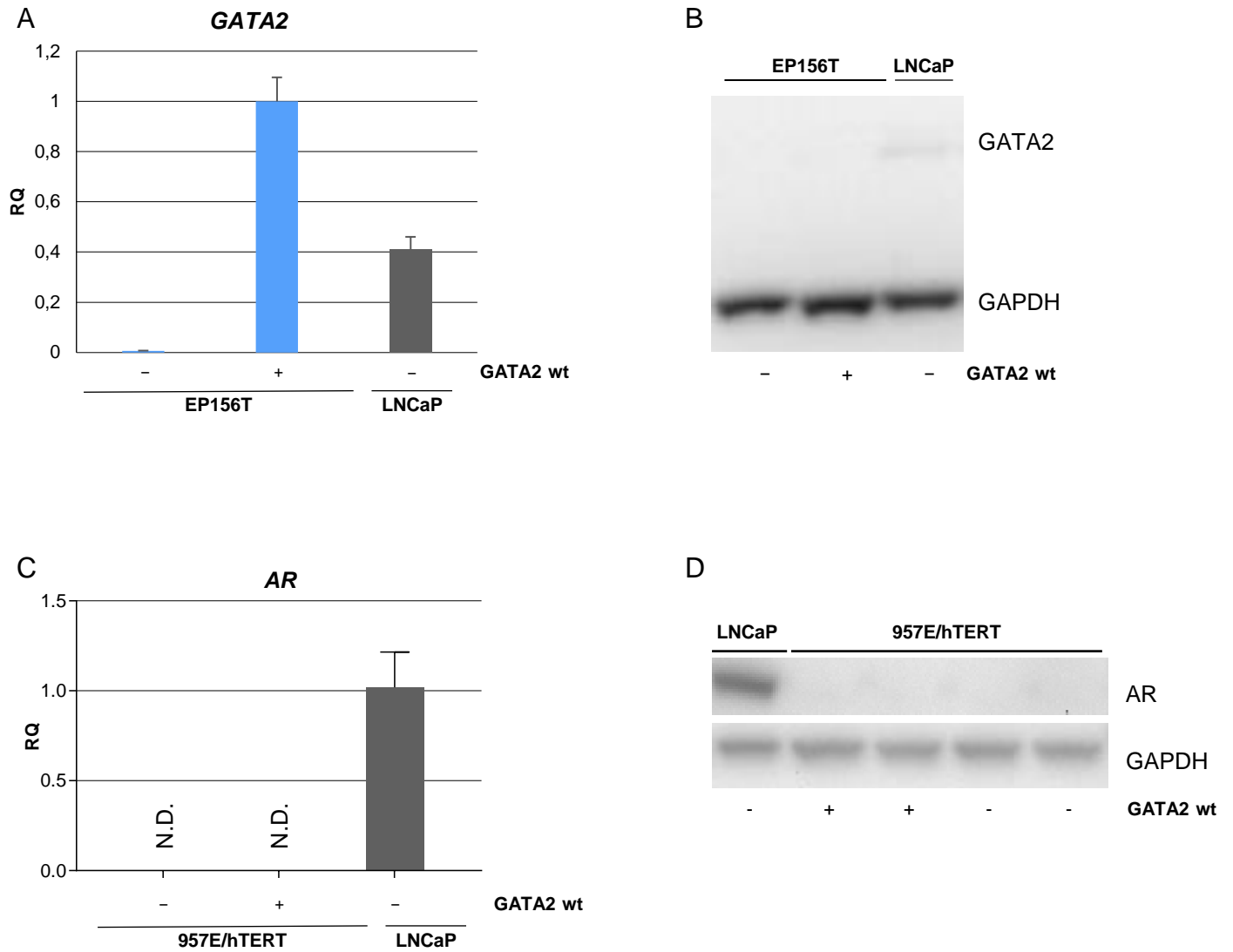
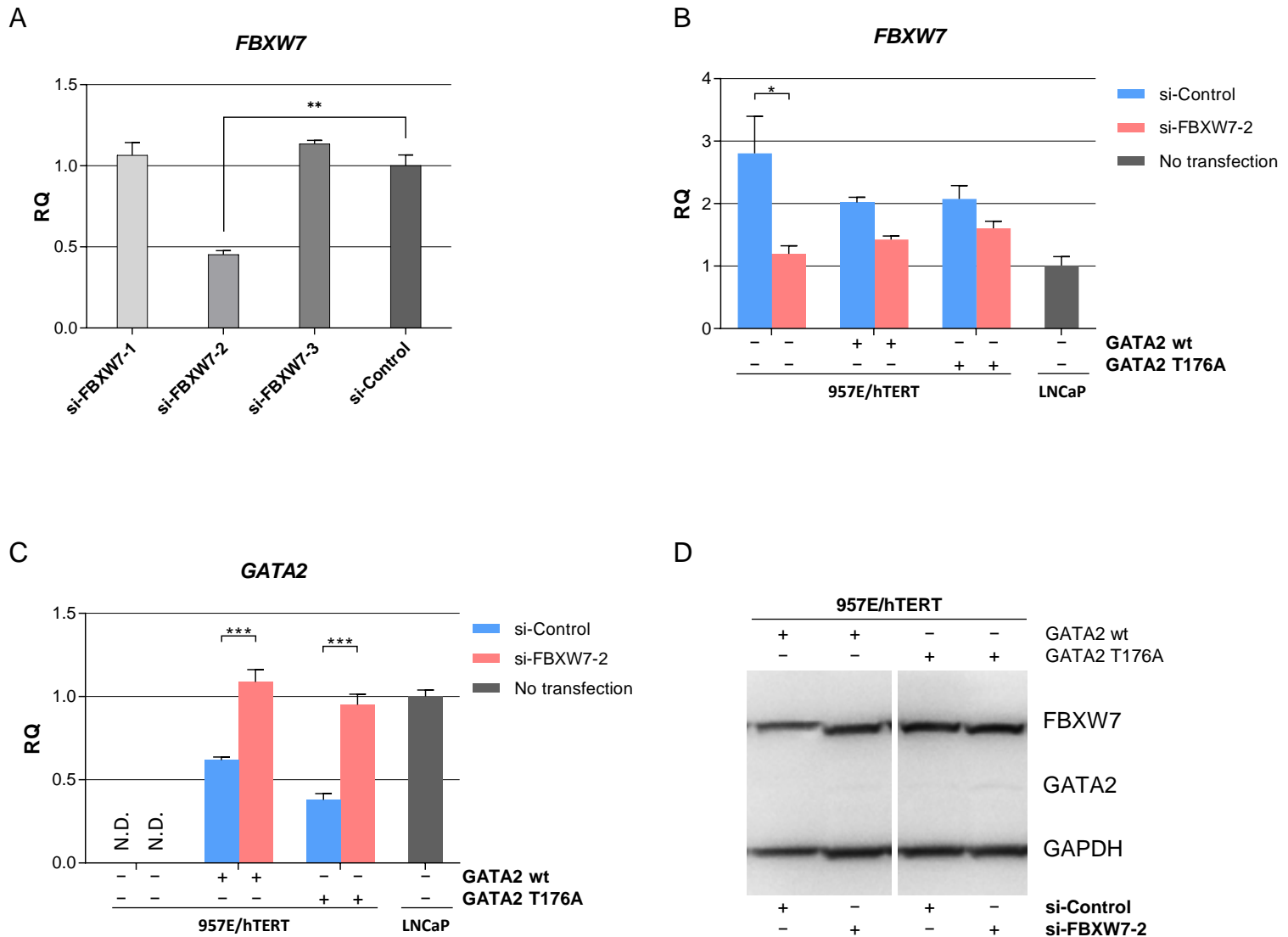


## Supplementary Materials



**Figure S1.** A) RT-qPCR and B) Western blot of exogenous GATA2 in EP156T cells. C) RT-qPCR and D) Western blot of AR in 957E/hTERT-GATA2 cells. Error bars represent standard error of the mean expression level (RQ) based on the RQmin/max of 95% confidence level. N.D. = not detected.



**Figure S2.** A) qPCR of 957E/hTERT cells transfected with siRNAs for FBXW7 or control siRNA (si-control) for 24 hours. B) and C) 957E/hTERT cells with stable transduction of GATA2 wt or GATA2 T176A and transfected with siRNA for FBXW7 (si-FBXW7-2) or control siRNA (si-control) for 48 hours. D) Western blot of 957E/hTERT cells with stable transduction of GATA2 wt or GATA2 T176A and transfected with siRNA for FBXW7 (si-FBXW7-2) or control siRNA (si-control) for 48 hours. Error bars represent standard error of the mean expression level (RQ) based on the RQmin/max of 95% confidence level. N.D.= not detected. \* $p \leq 0.05$ , \*\* $p \leq 0.01$ , \*\*\* $p \leq 0.001$  by using one-way ANOVA followed by Sidak's multiple comparisons test with 95% confidence interval.