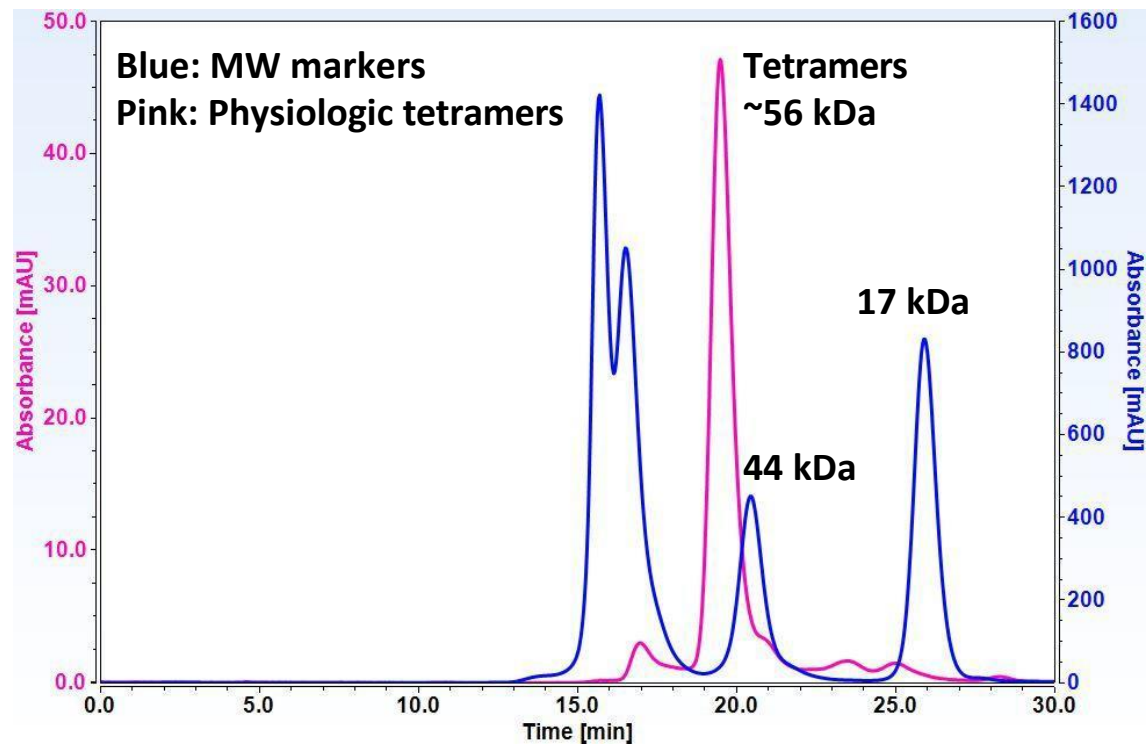
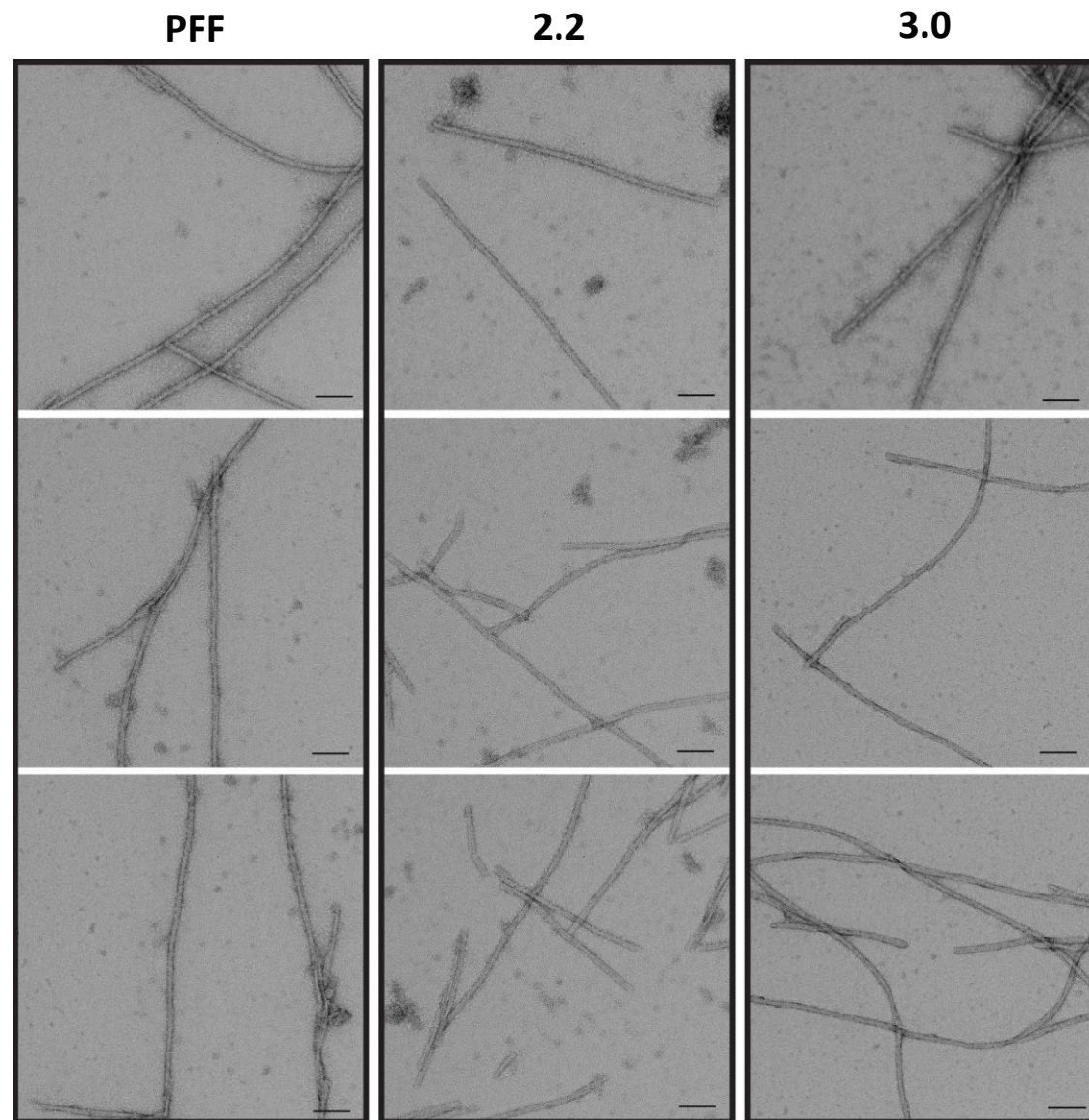


Supplemental Figure S1. SEC of oligomer preparations with demonstrated *in vitro* toxicity shows predominance of tetramers.



Supplemental Figure S2. SEC of physiologic tetramer preparations shows predominance of tetramers.



Supplemental Figure S3. Electron microscopic analysis of α -syn fibrils. Representative images of the negative stained fibril specimens acquired at 45,000x using a Ceta CMOS camera on a Talos L120C transmission electron microscope. The overall morphology and widths of the fibrils seeded by peptide scaffolds resemble that of fibrils seeded by PFFs. Scaffold 2.2 = cyclo(CG GK TKEGG), scaffold 3.0 = cyclo(CG GEK TKGGG). Scale bar = 100 nm.