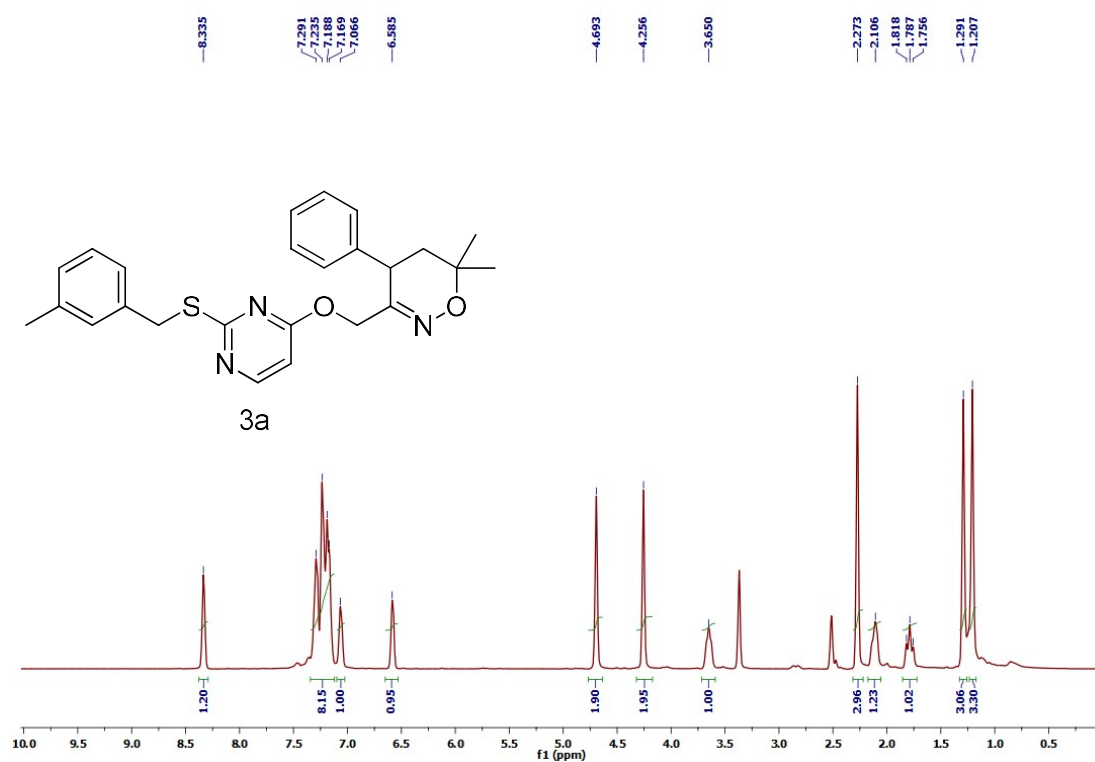
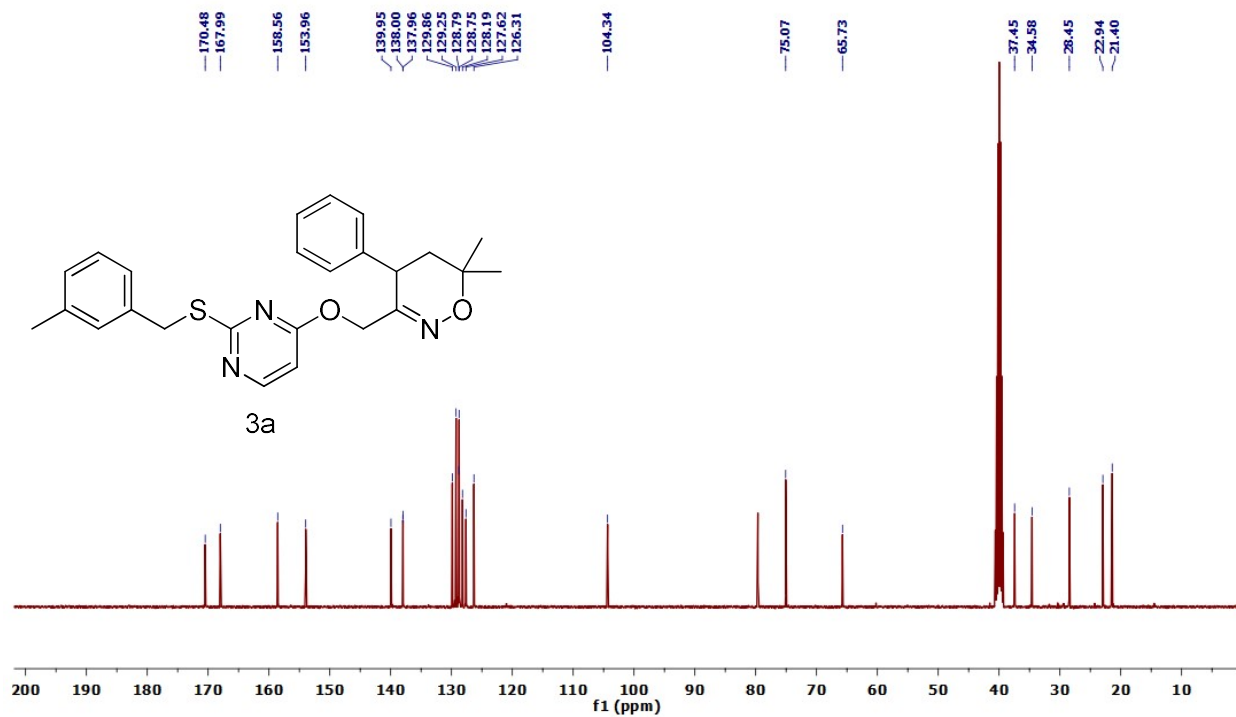


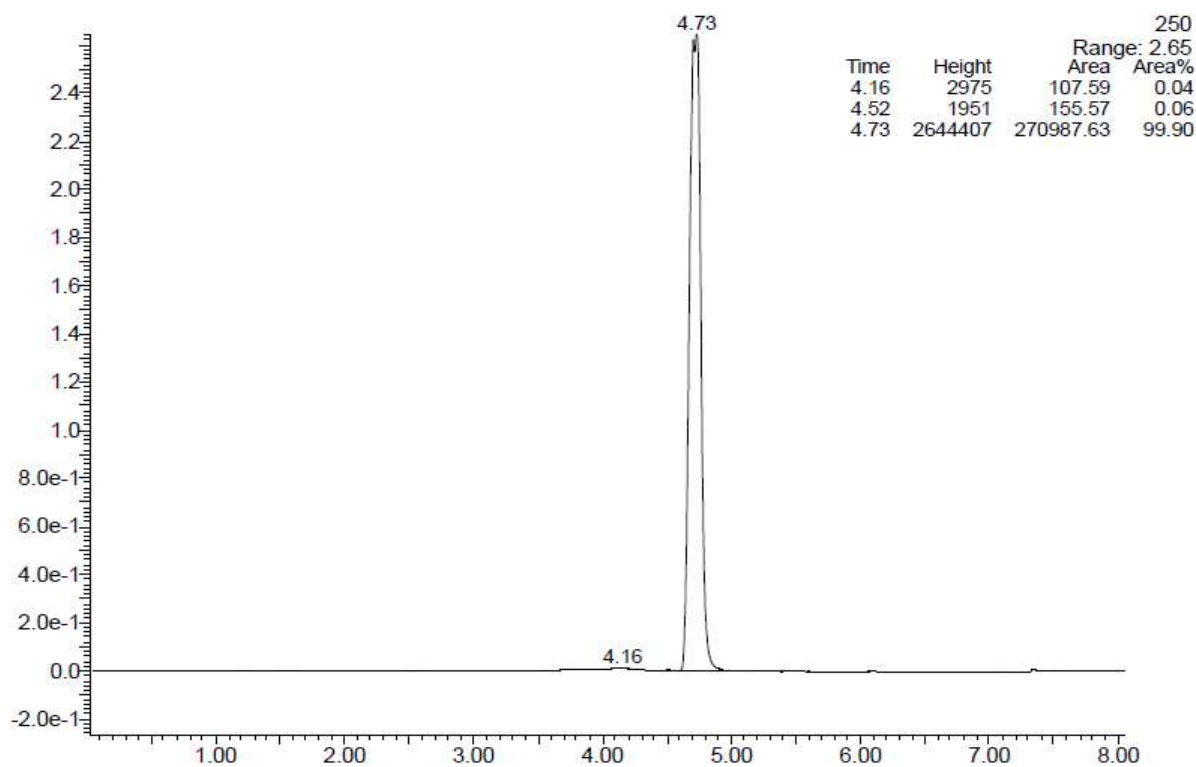
PAGES	CONTENT
S2-S23	^1H and ^{13}C NMR of 3(a-l)
S24-S40	H and ^{13}C NMR of 5(a-p)
S41-S43	IC ₅₀ of 3(a-l) against MCF-7
S44-S48	IC ₅₀ of 5(a-p) against MCF-7
S49	IC ₅₀ of 3a against MDA-MB-231, BT-549, SUM159PT
S50	IC ₅₀ of 5b against MDA-MB-231, BT-549, SUM159PT
S51	Original blots of western blot analysis



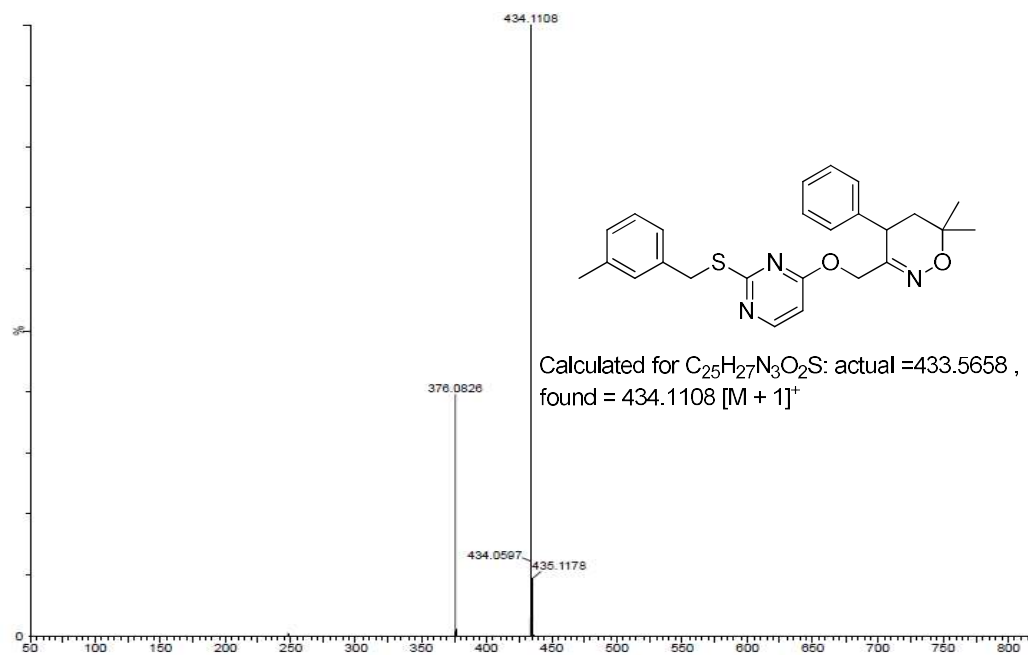
^1H NMR OF **3a**



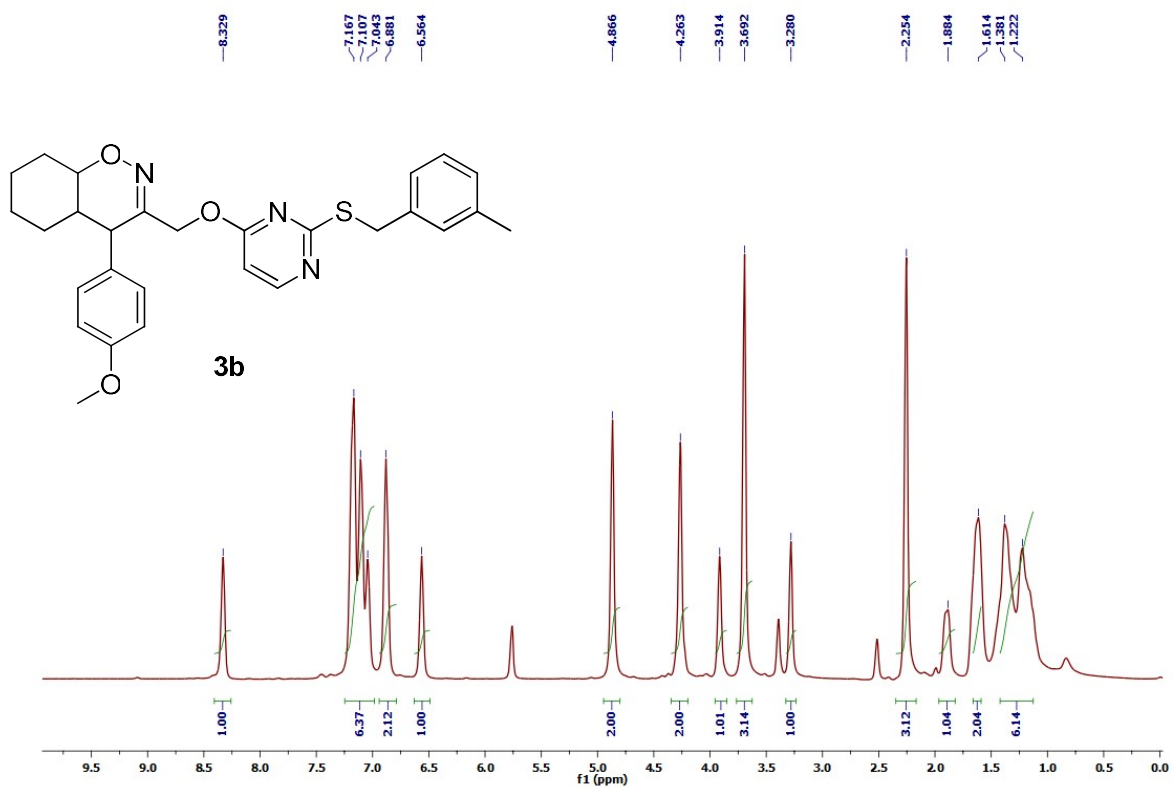
¹³C NMR OF 3a



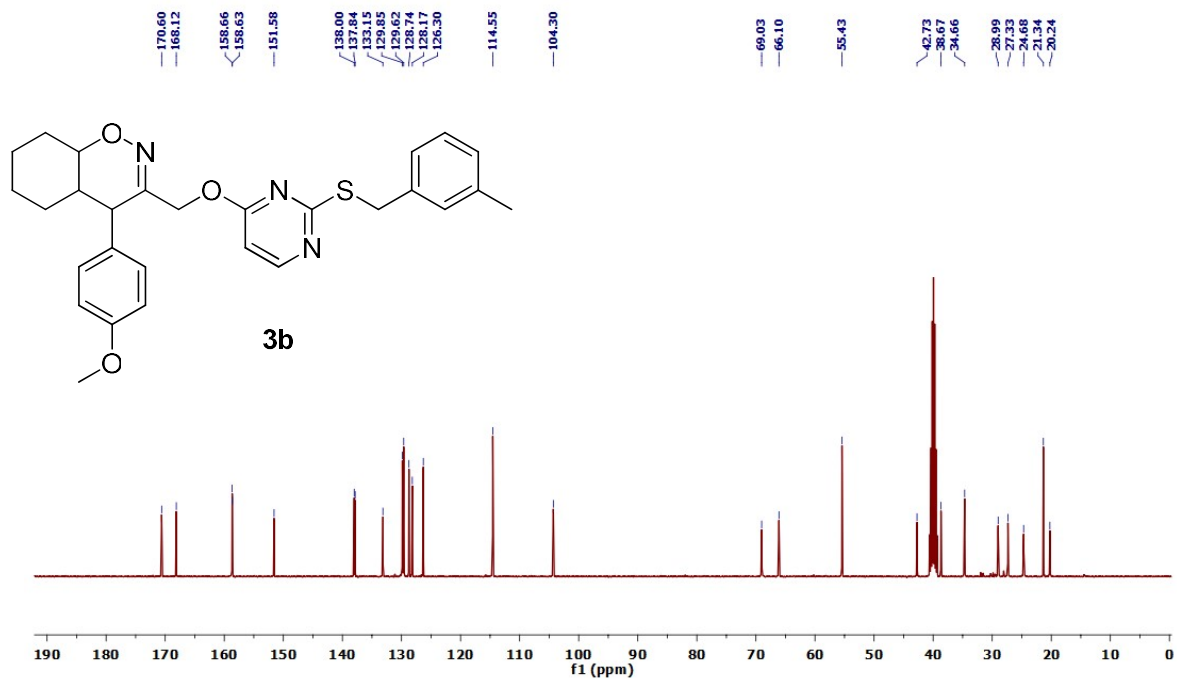
Liquid chromatogram of 3a



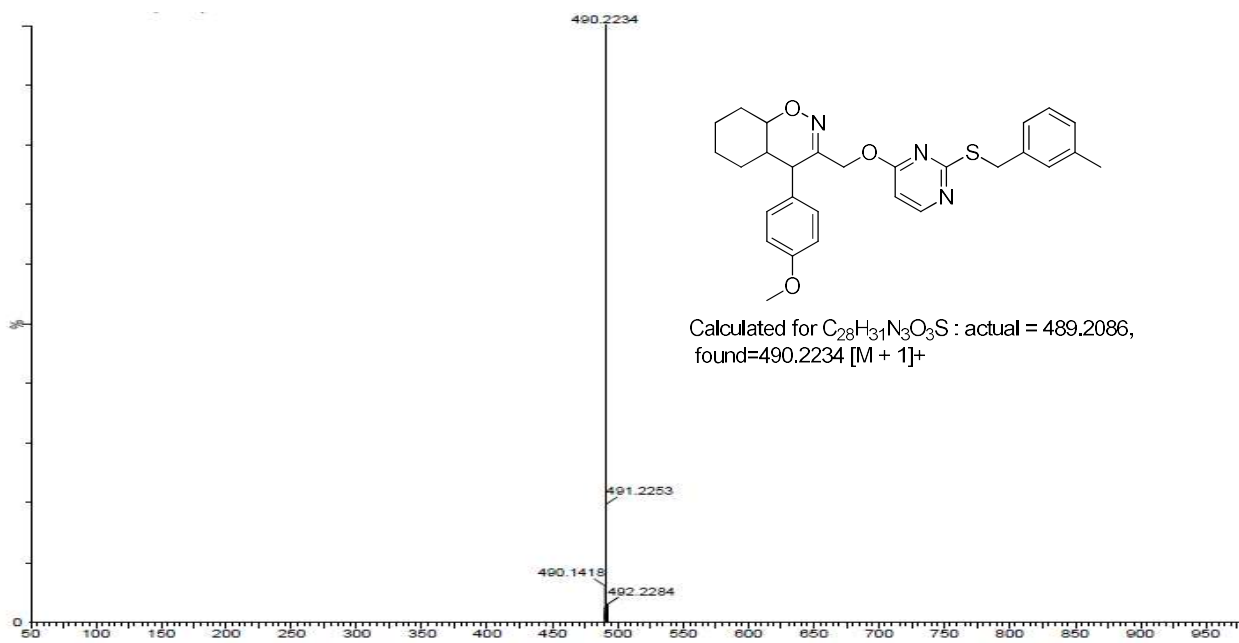
Mass spectra of 3a



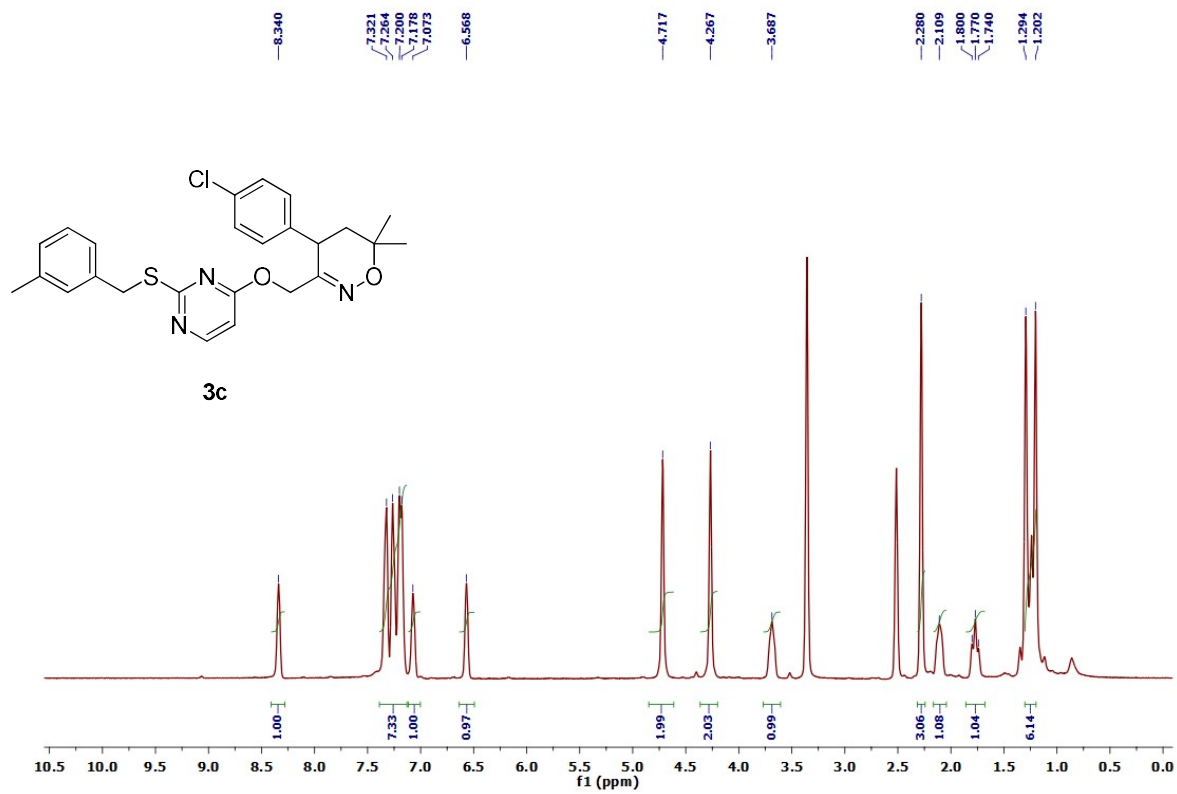
1H NMR OF 3b



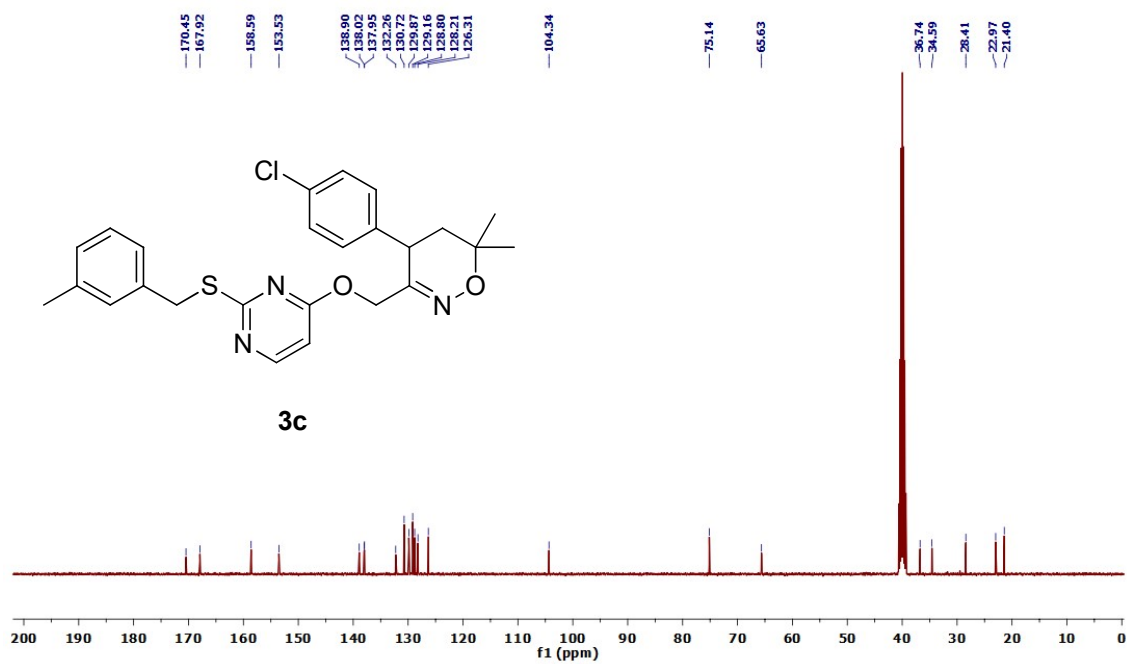
¹³C NMR OF **3b**



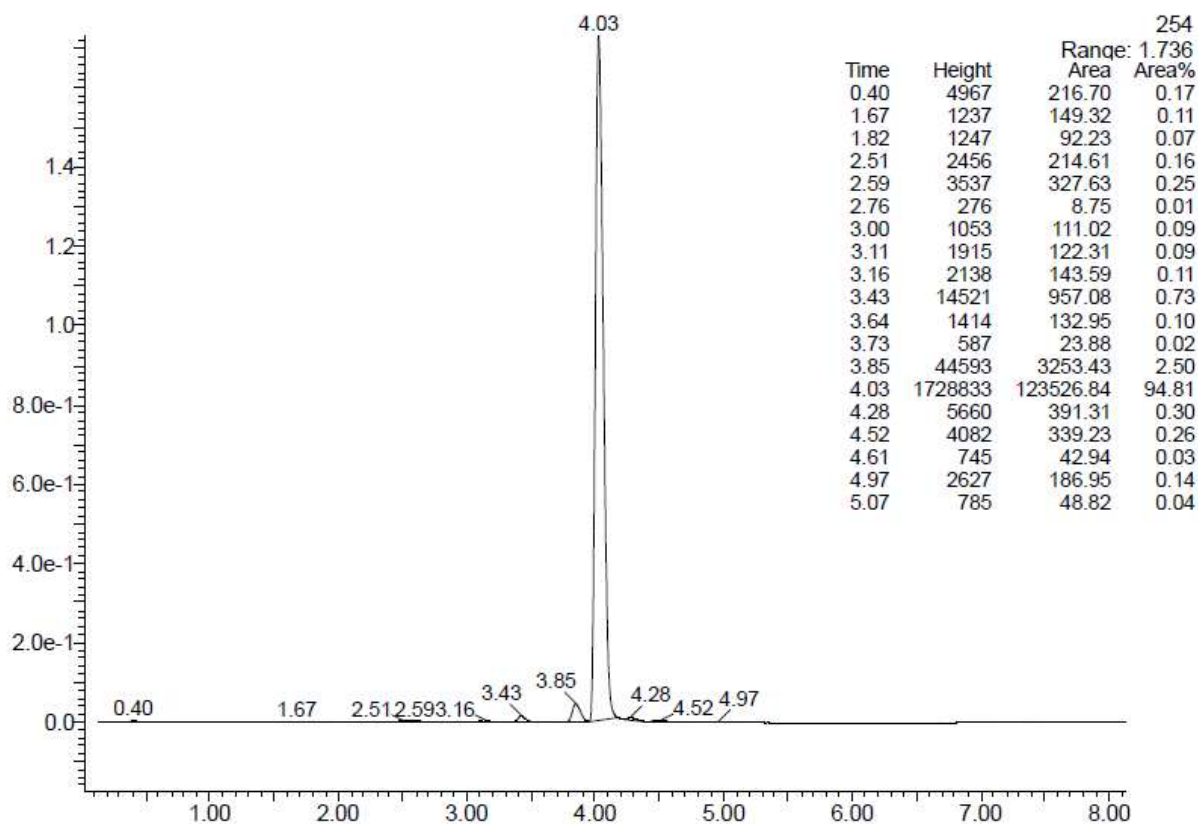
Mass spectra of **3b**



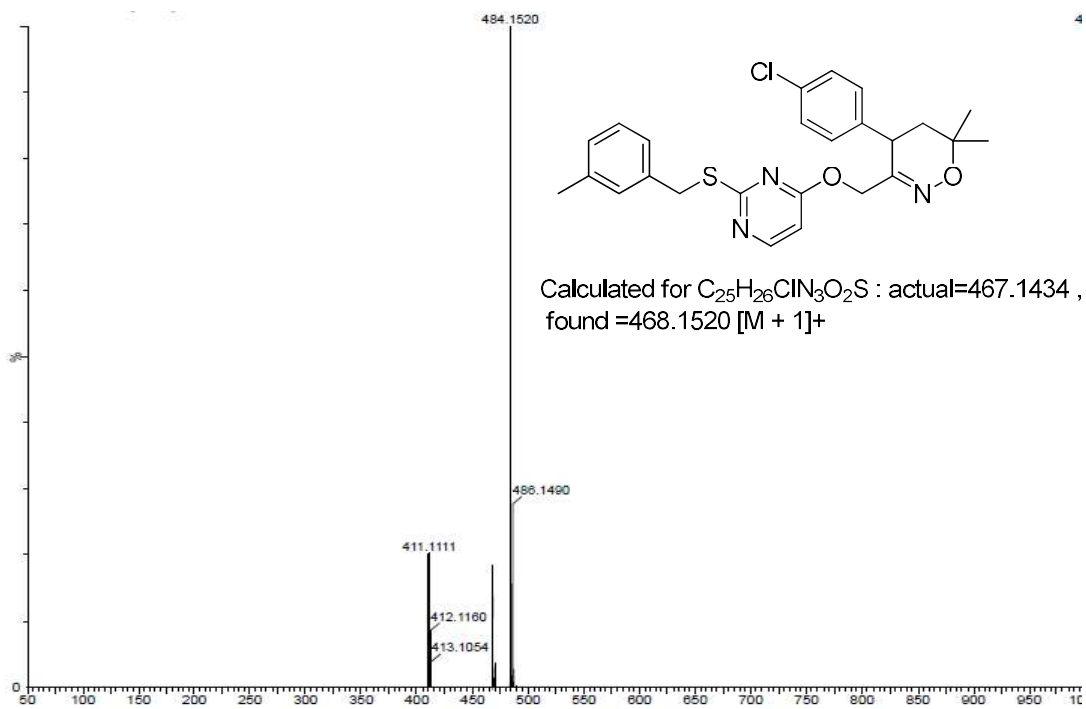
^1H NMR OF **3c**



^{13}C NMR OF **3c**

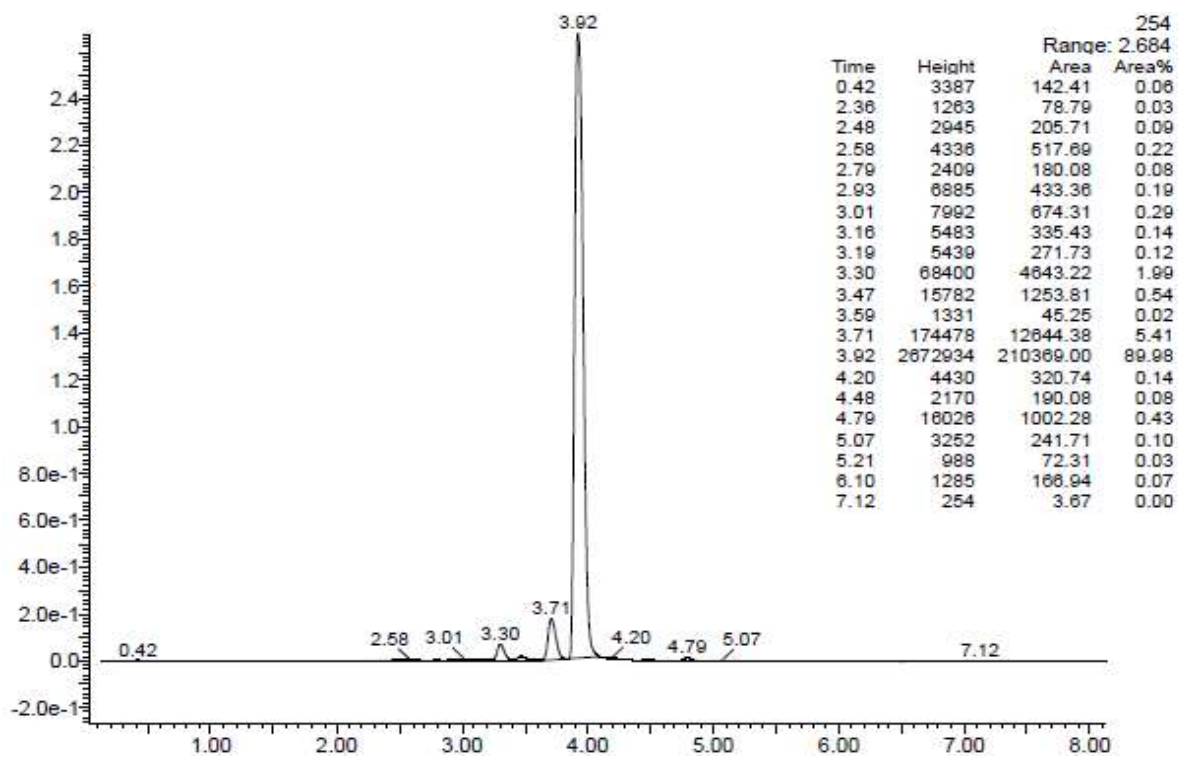


Liquid chromatogram of TRX-03(3c)

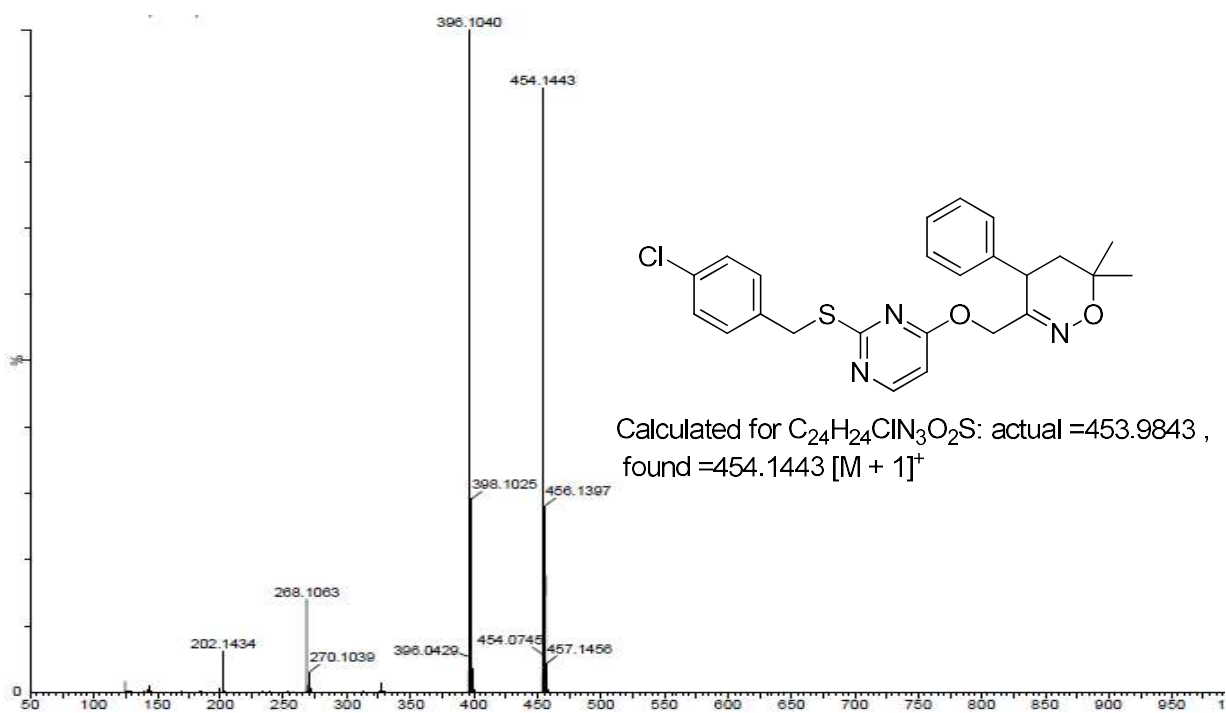


Mass spectra of 3c

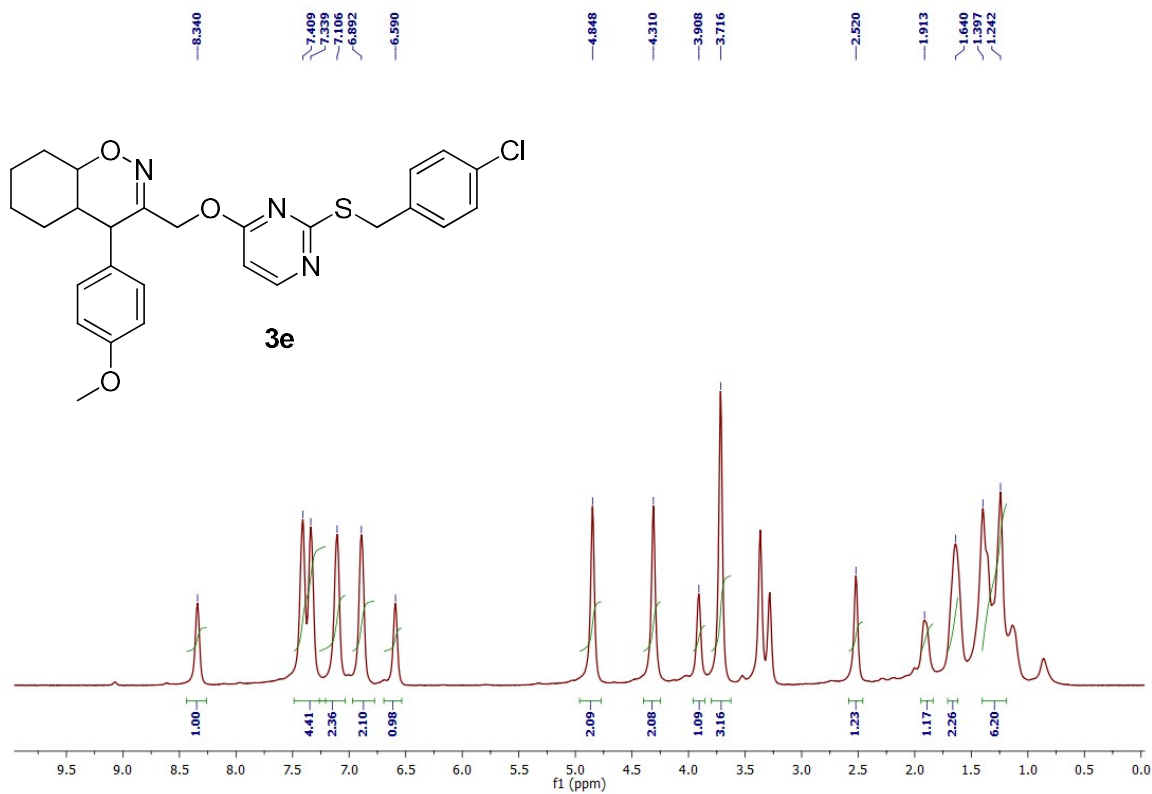




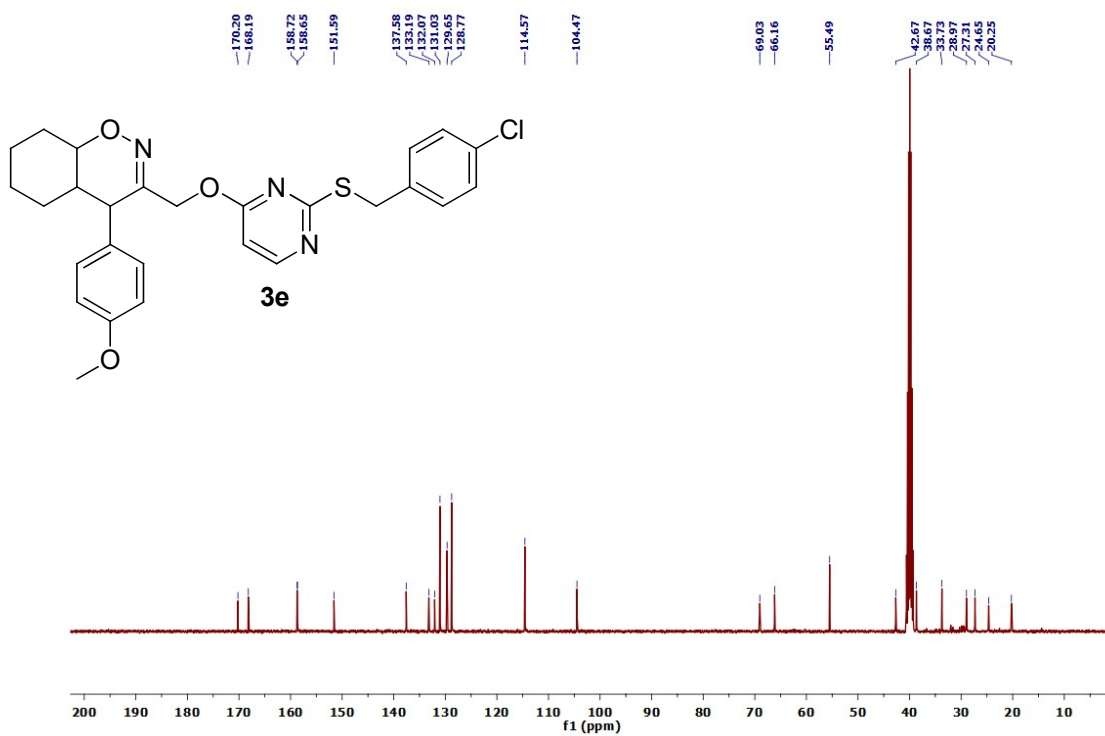
Liquid chromatogram of 3d



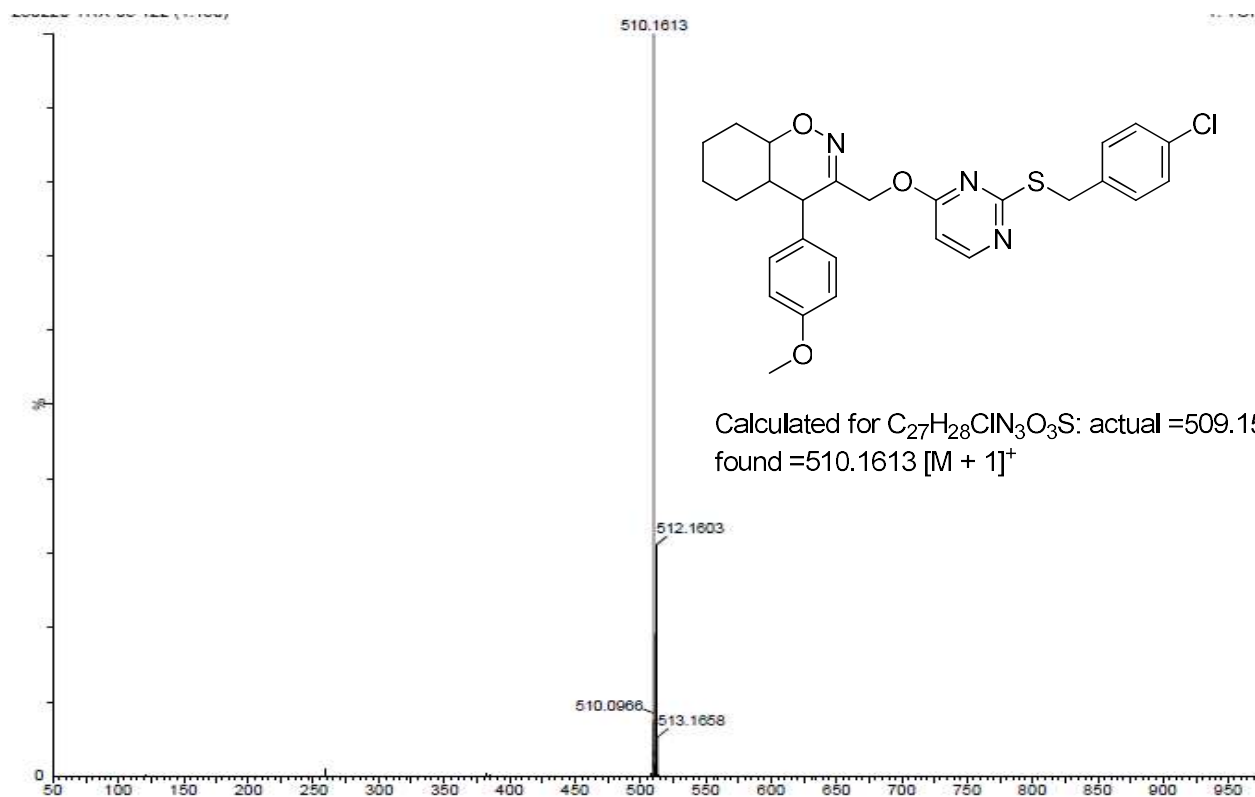
Mass spectra of 3d



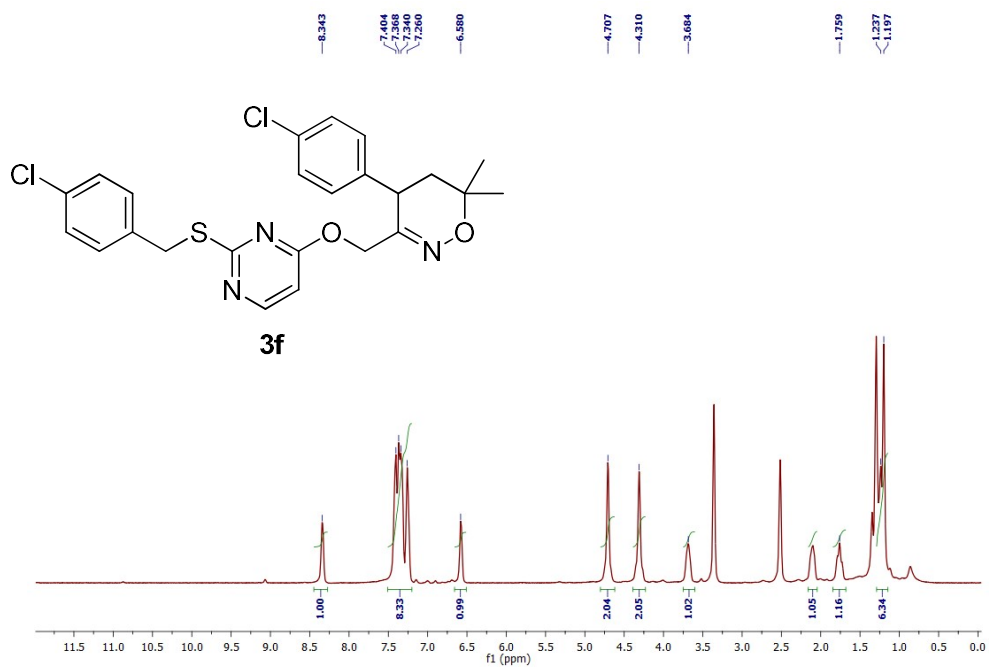
^1H NMR OF **3e**



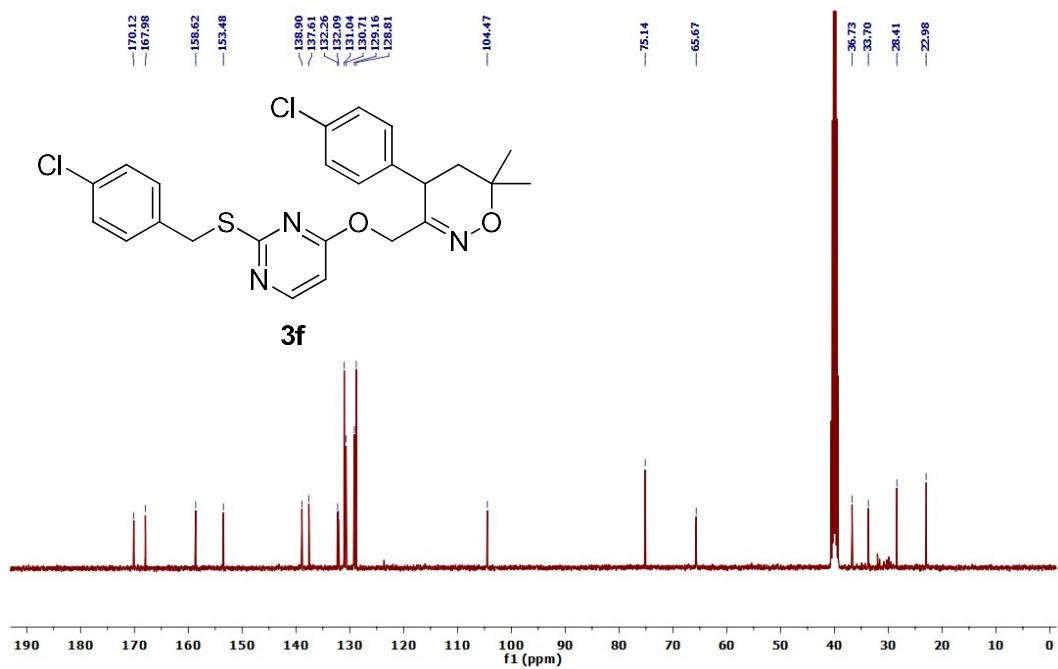
^{13}C NMR OF **3e**



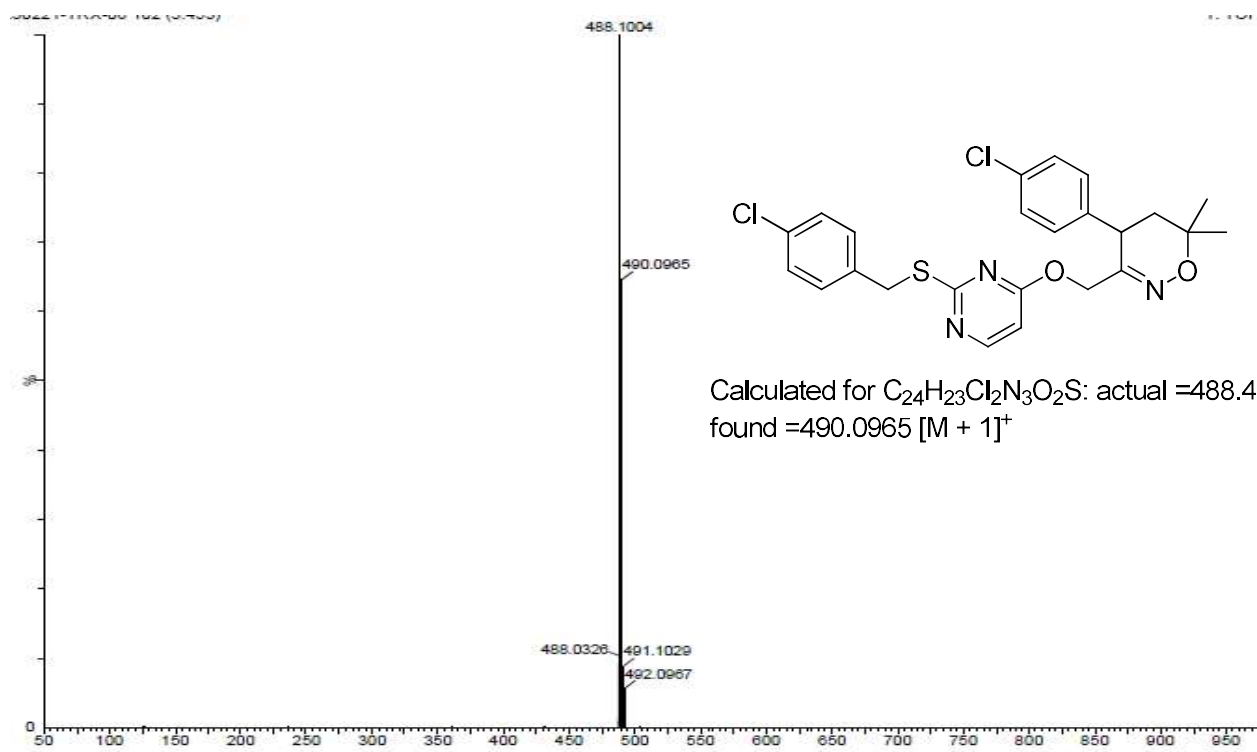
Mass spectra of **3e**



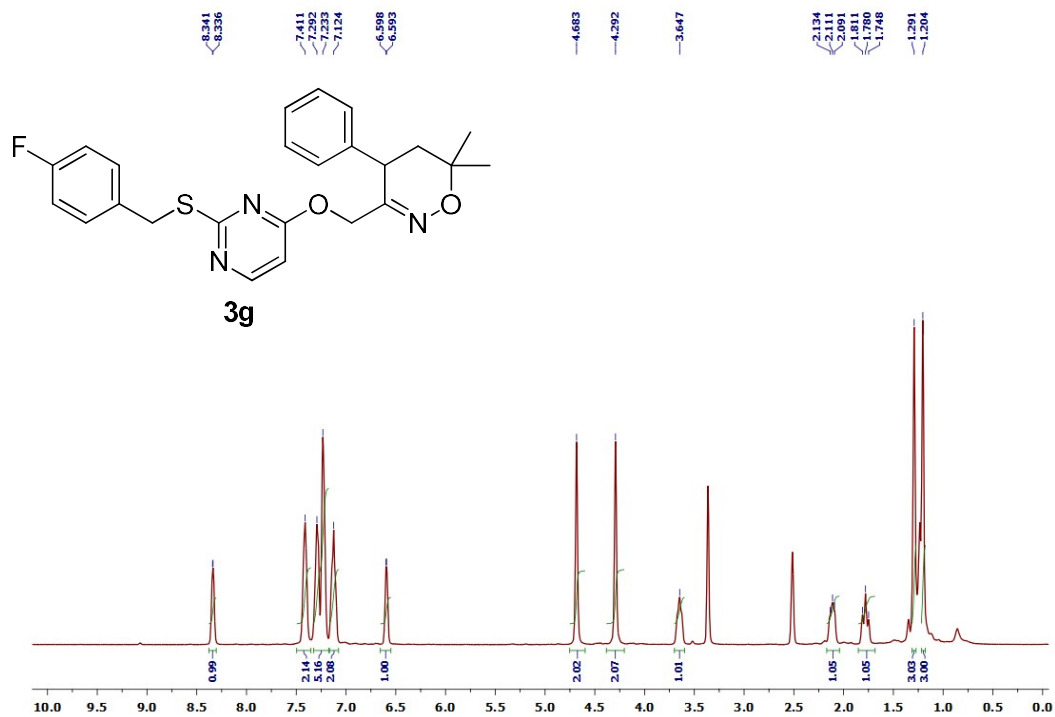
1H NMR OF **3f**



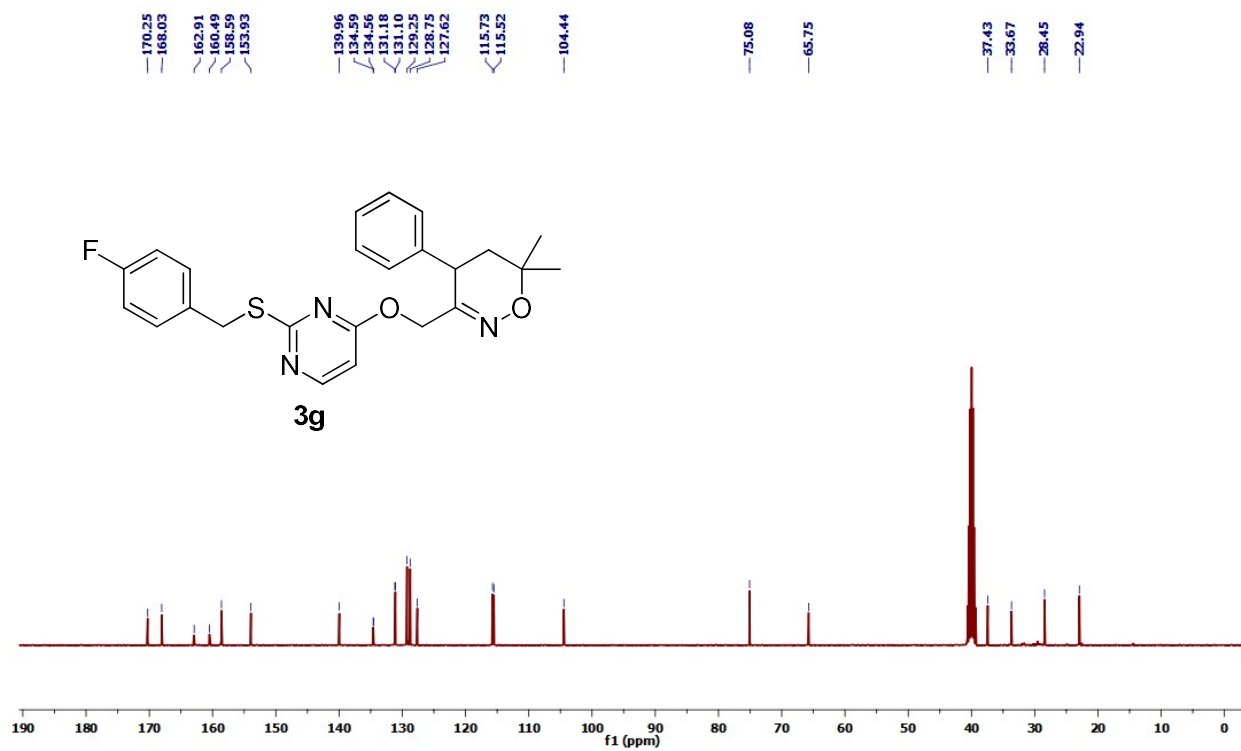
^{13}C NMR OF **3f**



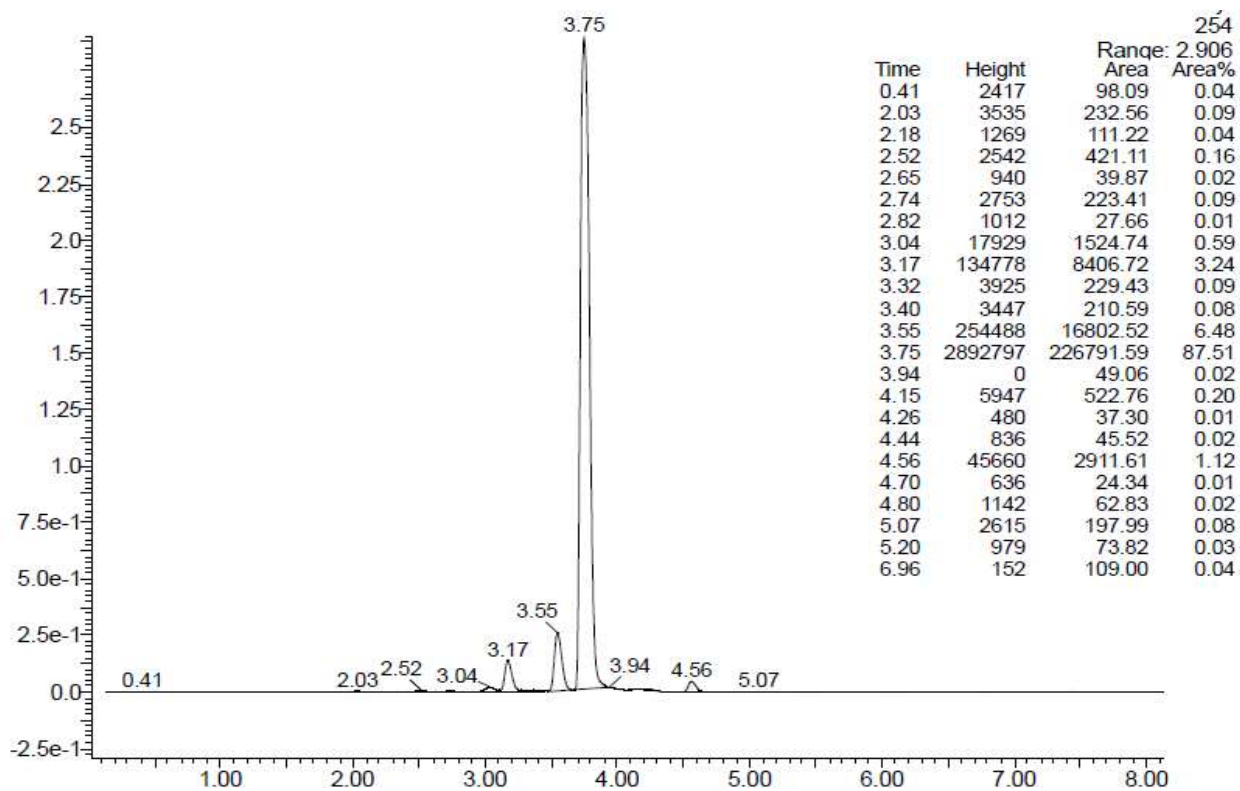
Mass spectra of TRX-05 (**3f**)



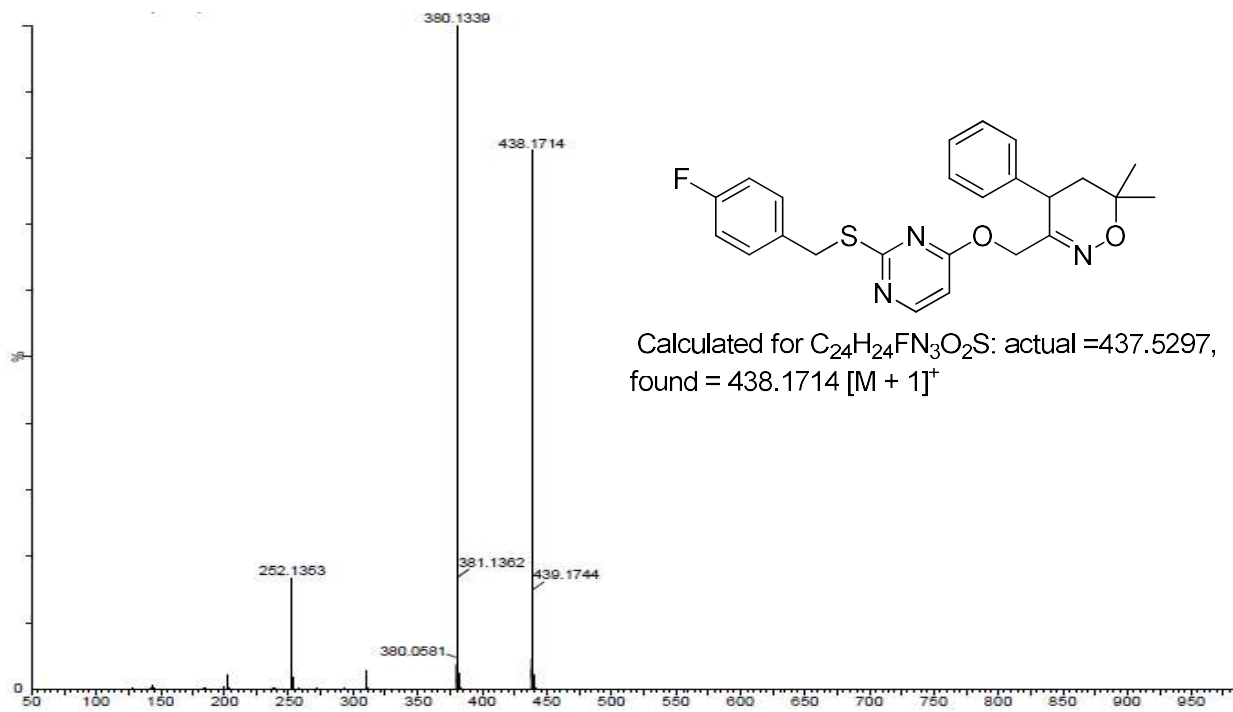
^1H NMR OF **3g**



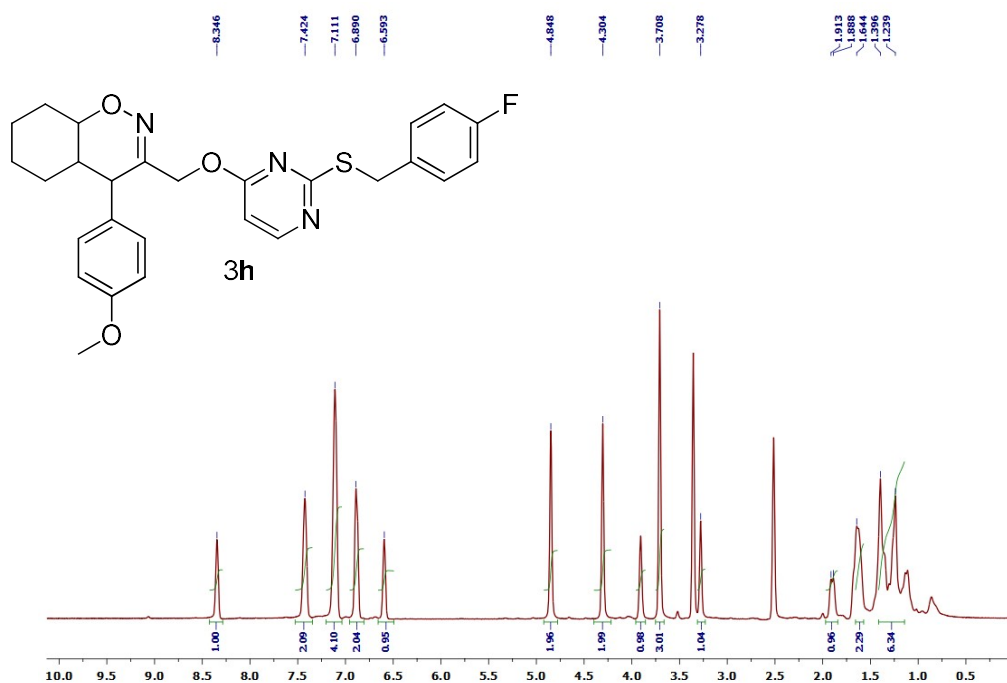
^{13}C NMR OF **3g**



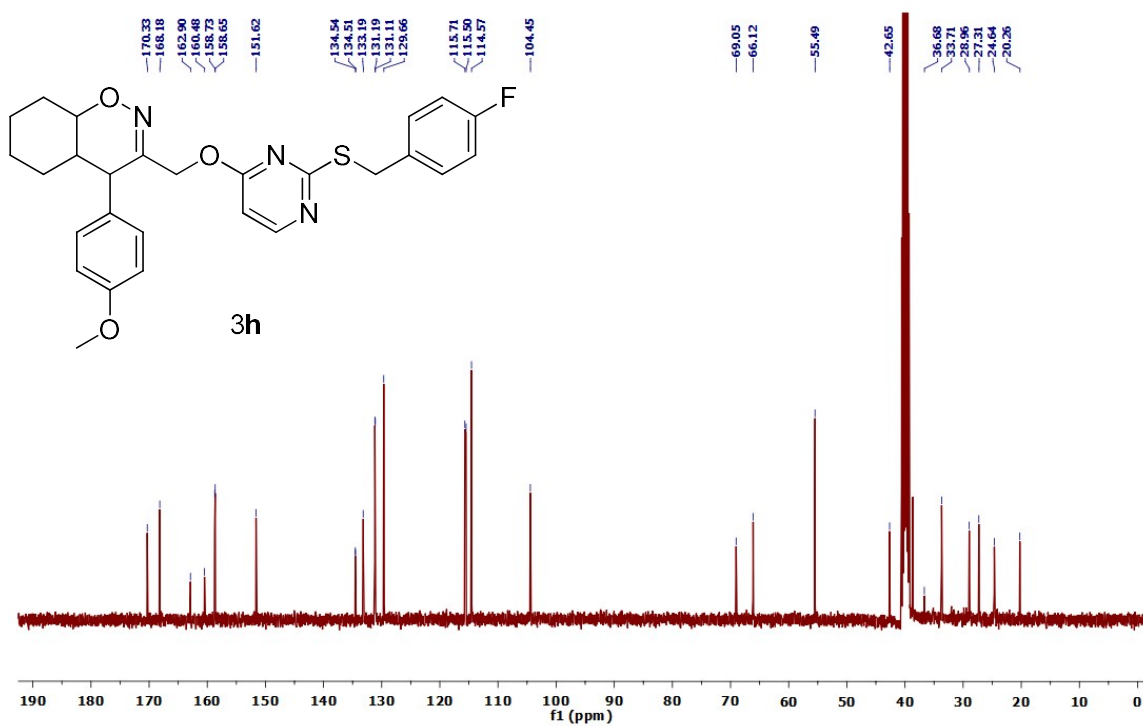
Liquid chromatogram of **3g**



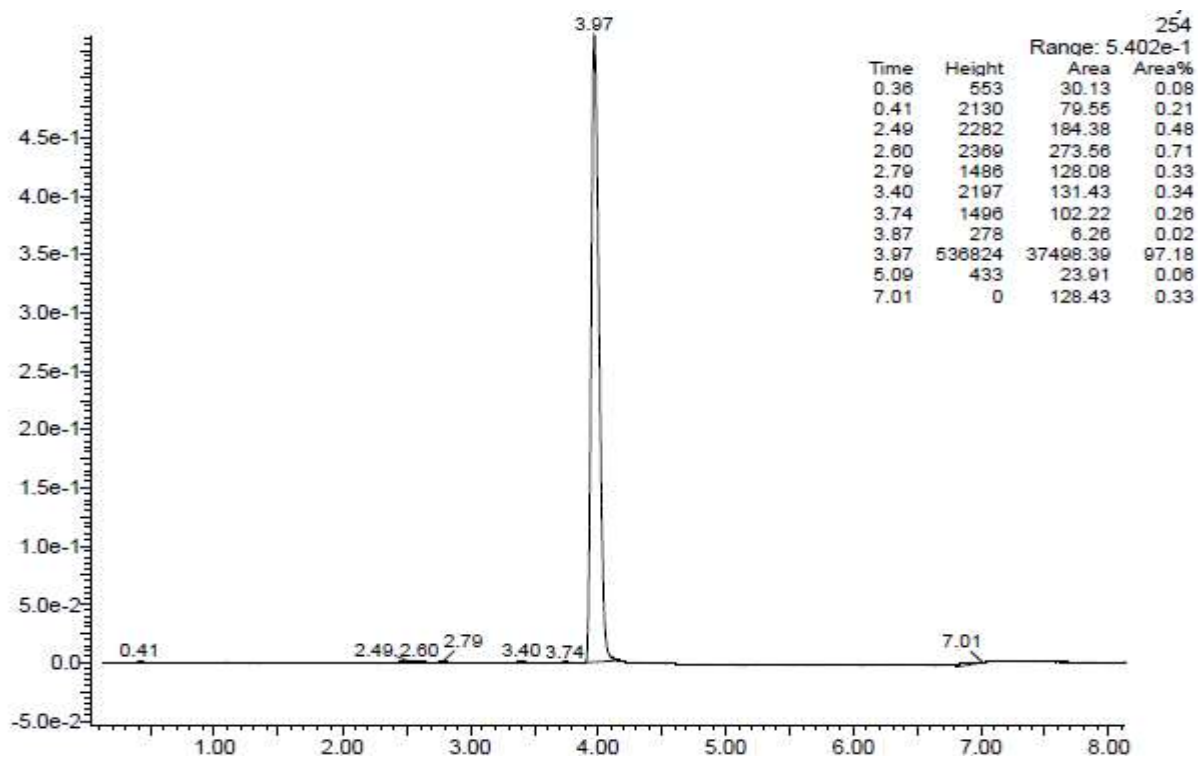
Mass spectra of **3g**



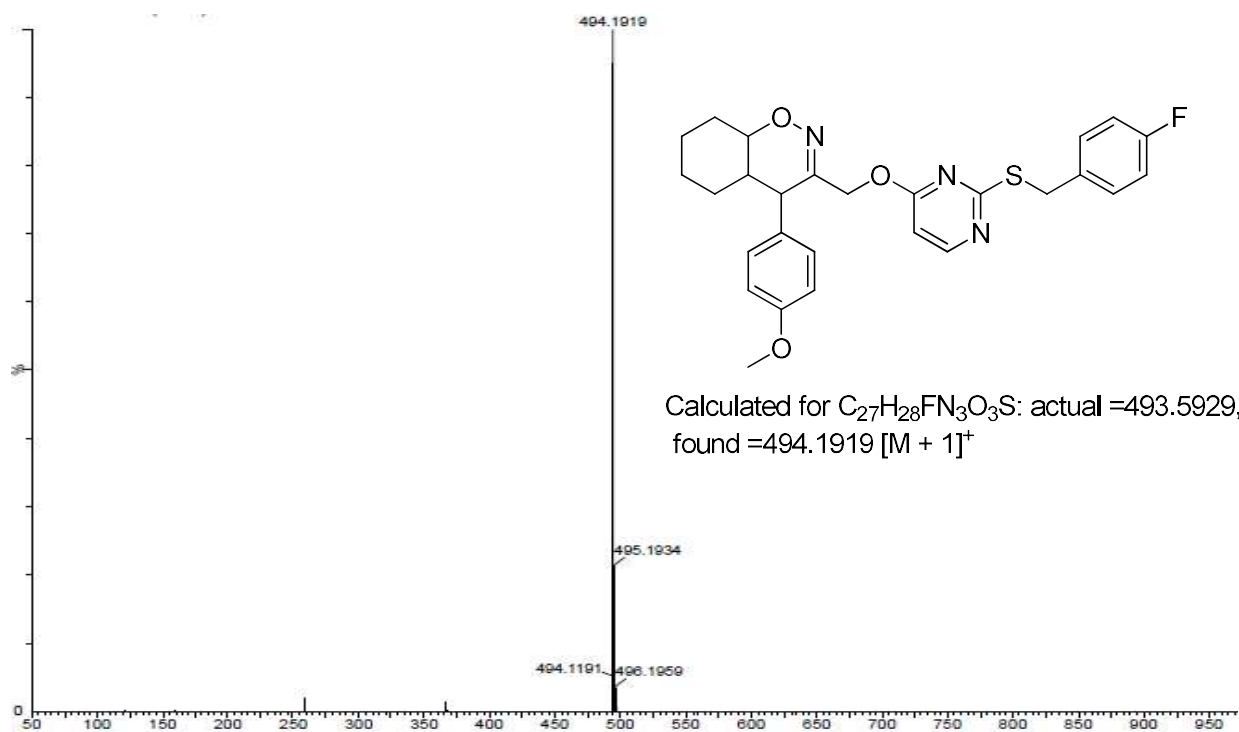
^1H NMR OF **3h**



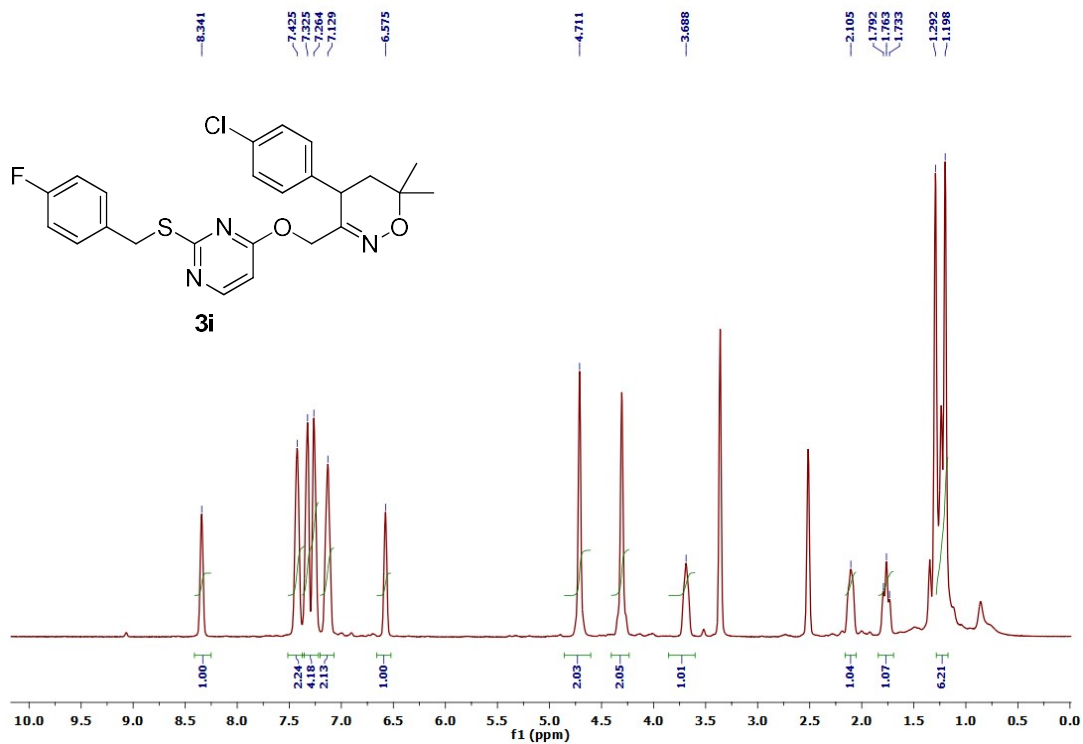
^{13}C NMR OF **3h**



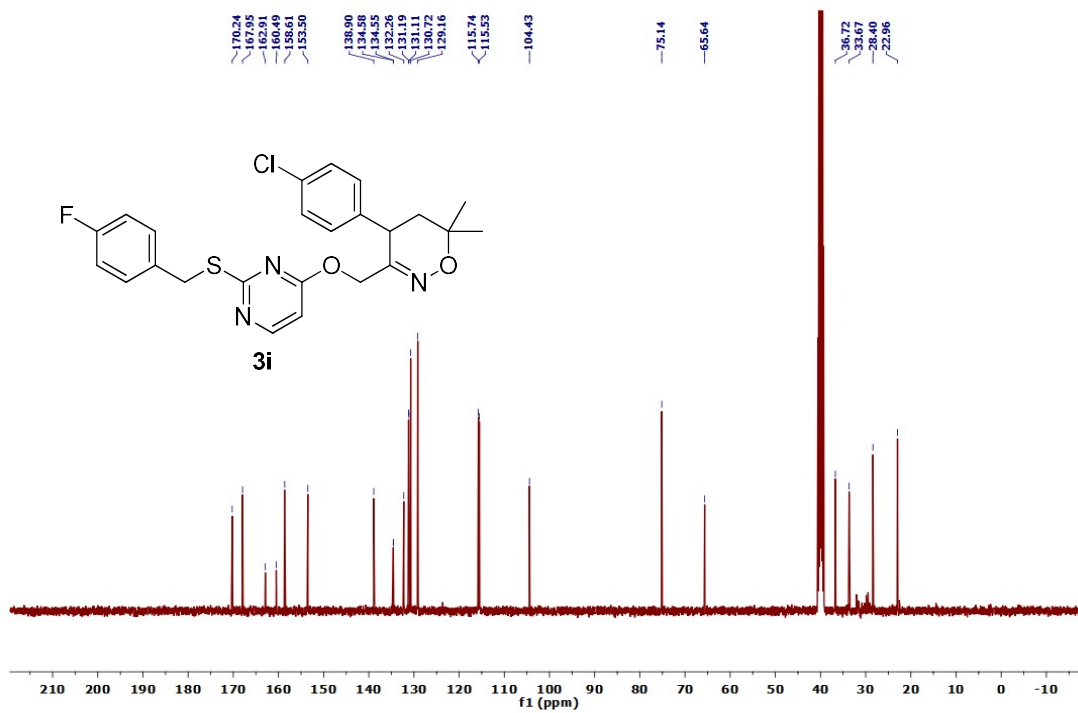
Liquid chromatogram of (3h)



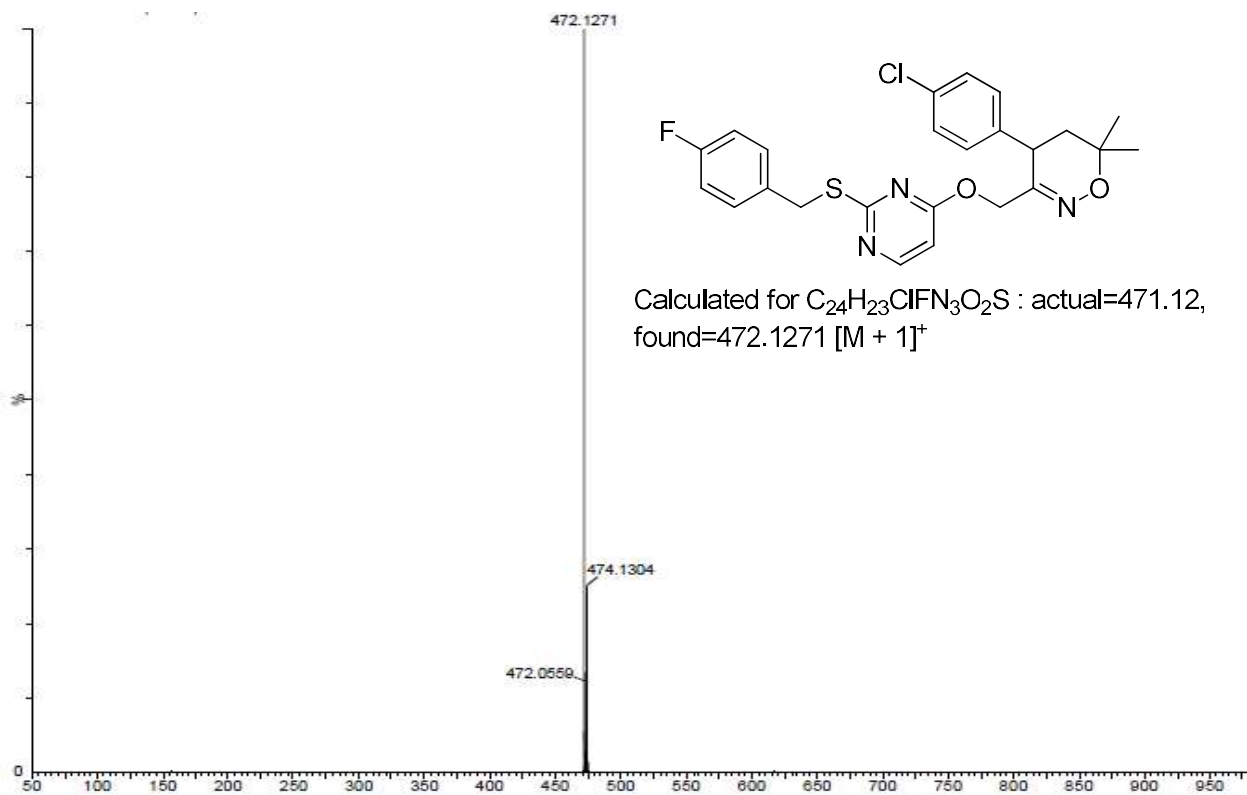
Mass spectra of 3h



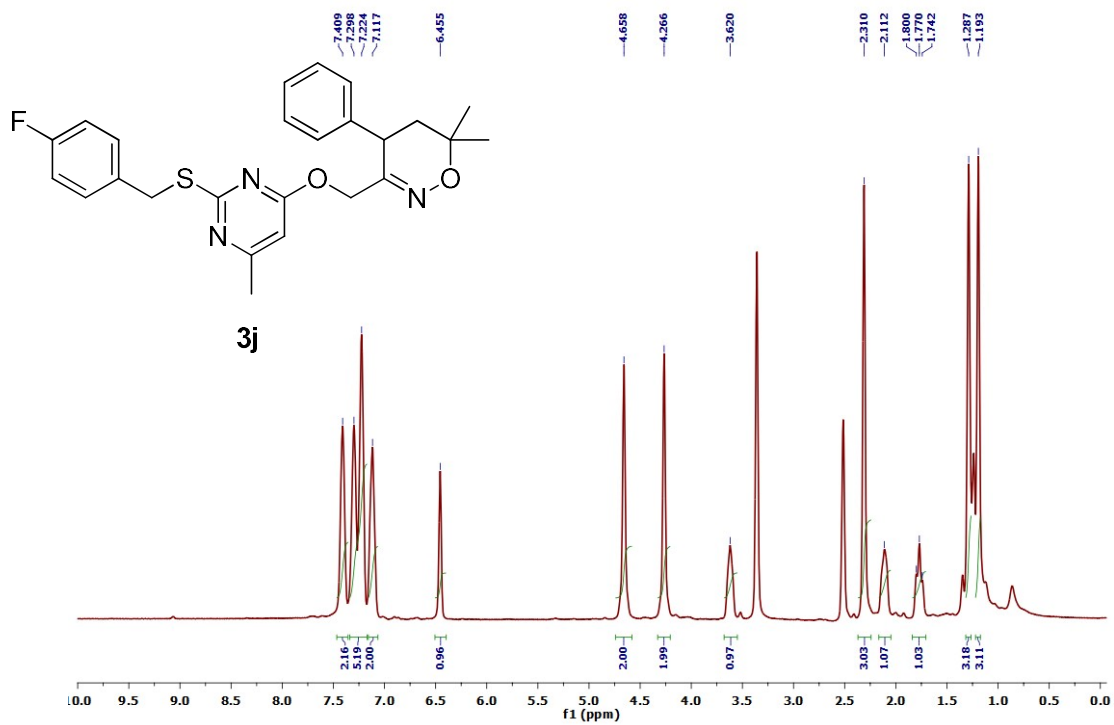
^1H NMR OF **3i**



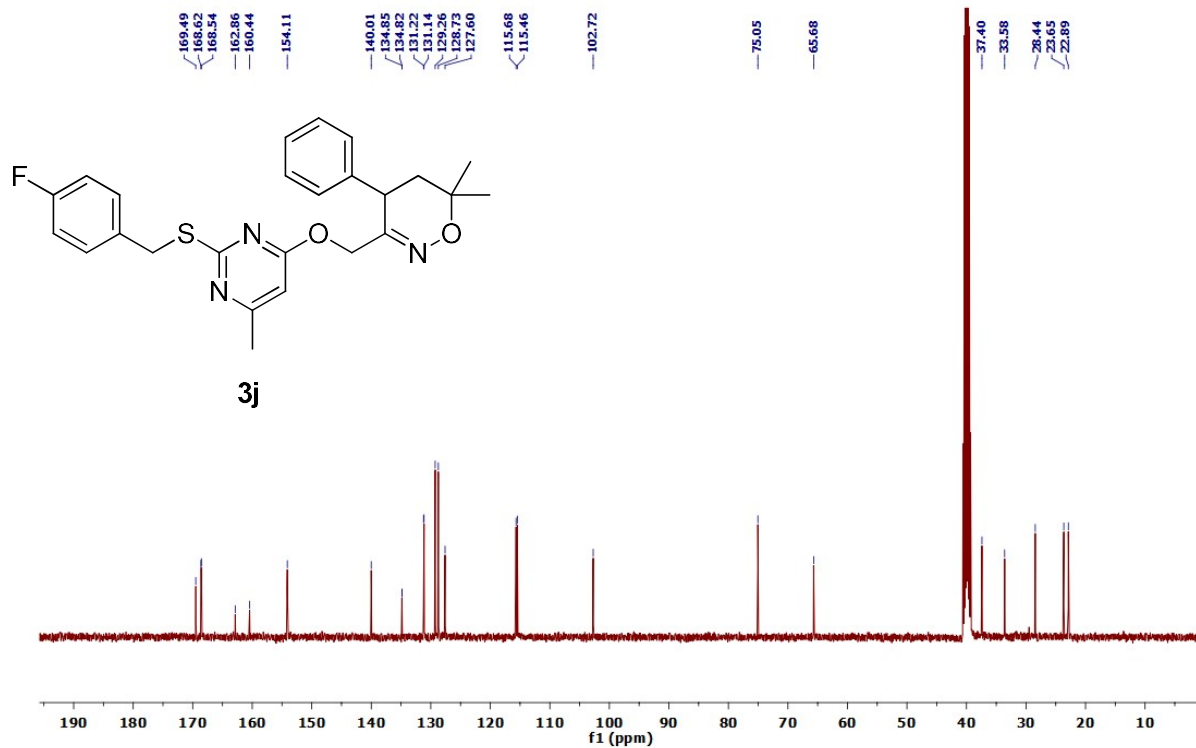
^{13}C NMR OF **3i**



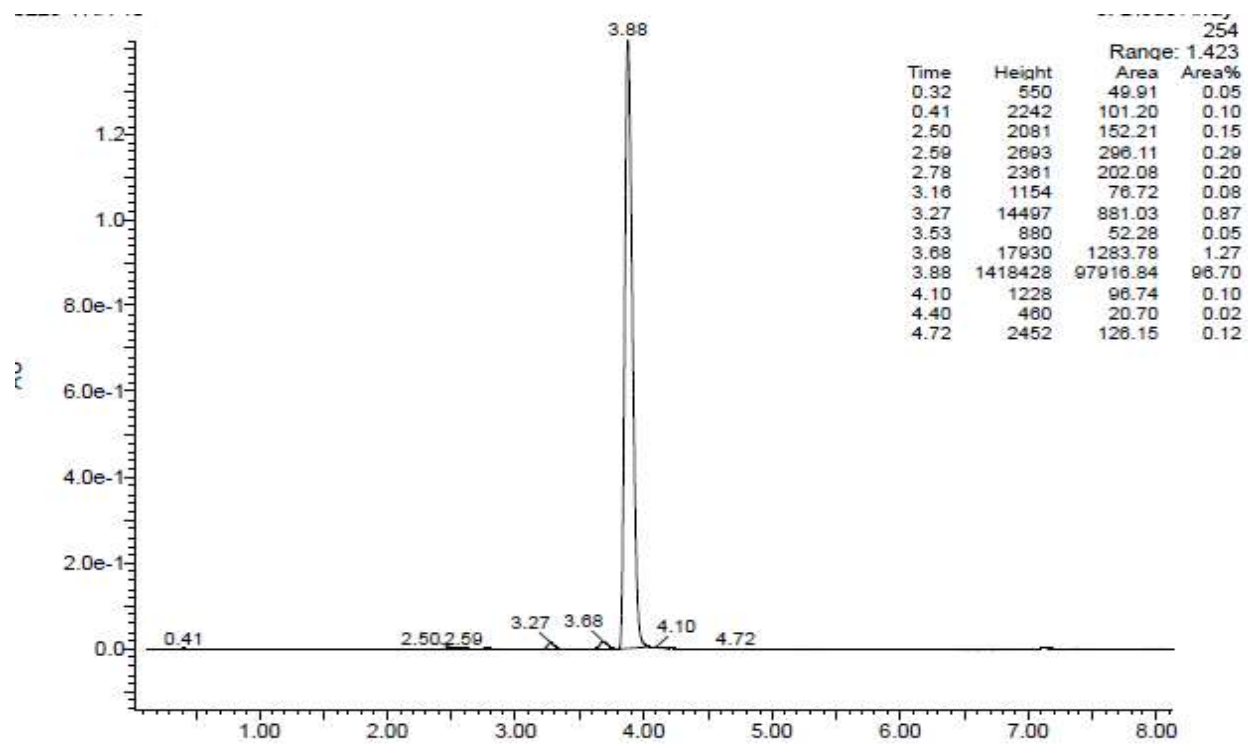
Mass spectra of 3i



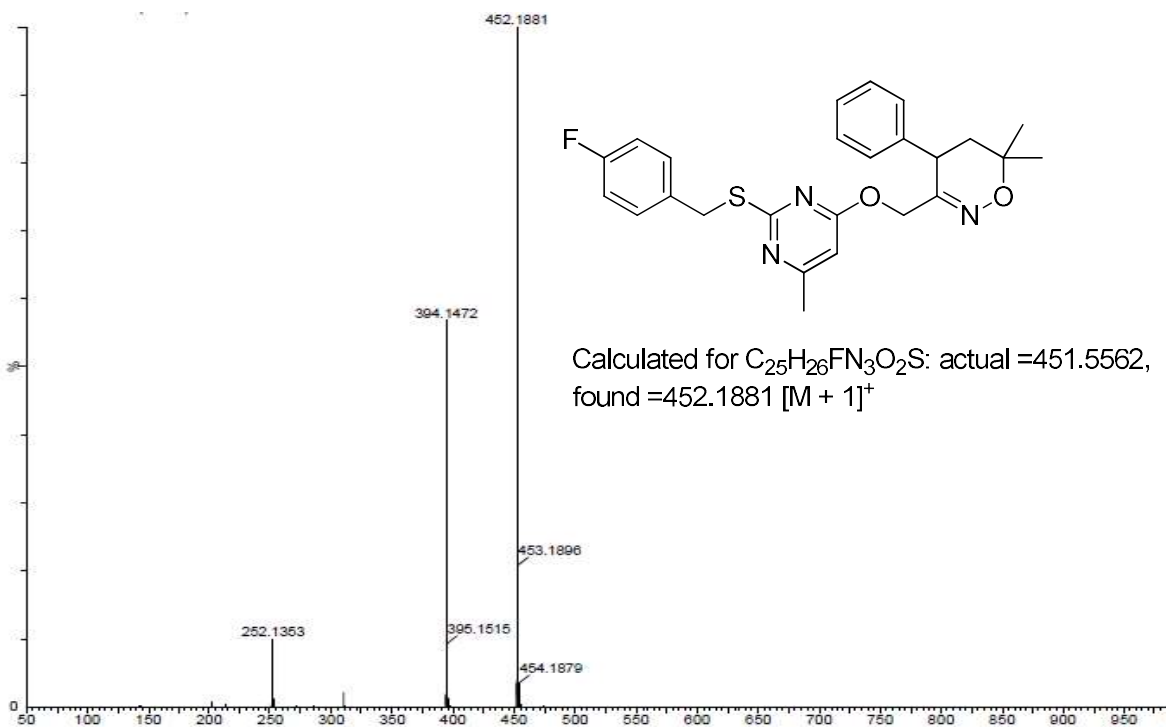
1H NMR OF 3j



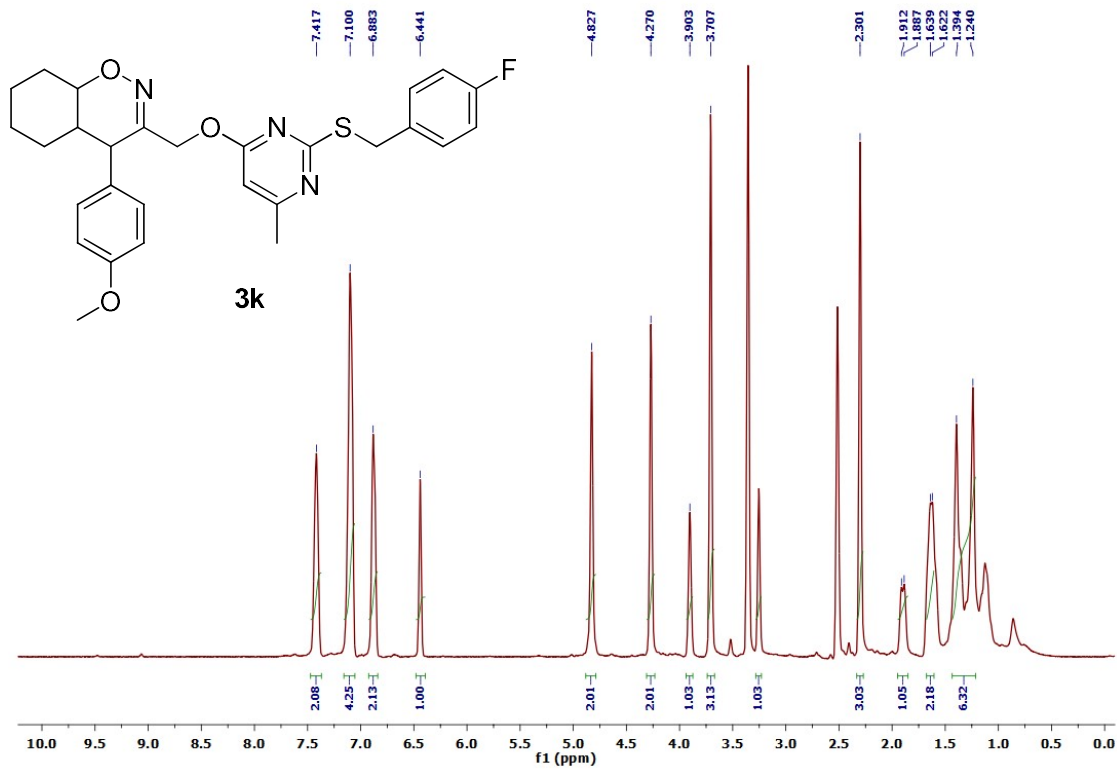
^{13}C NMR OF **3j**



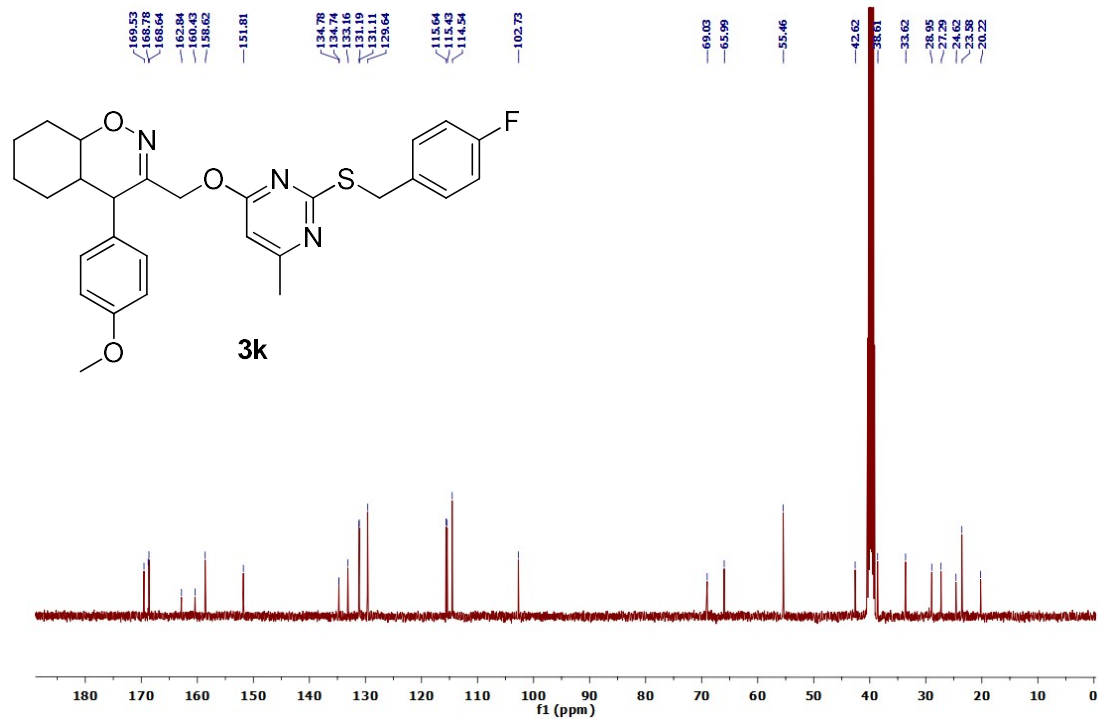
Liquid chromatogram of **3j**



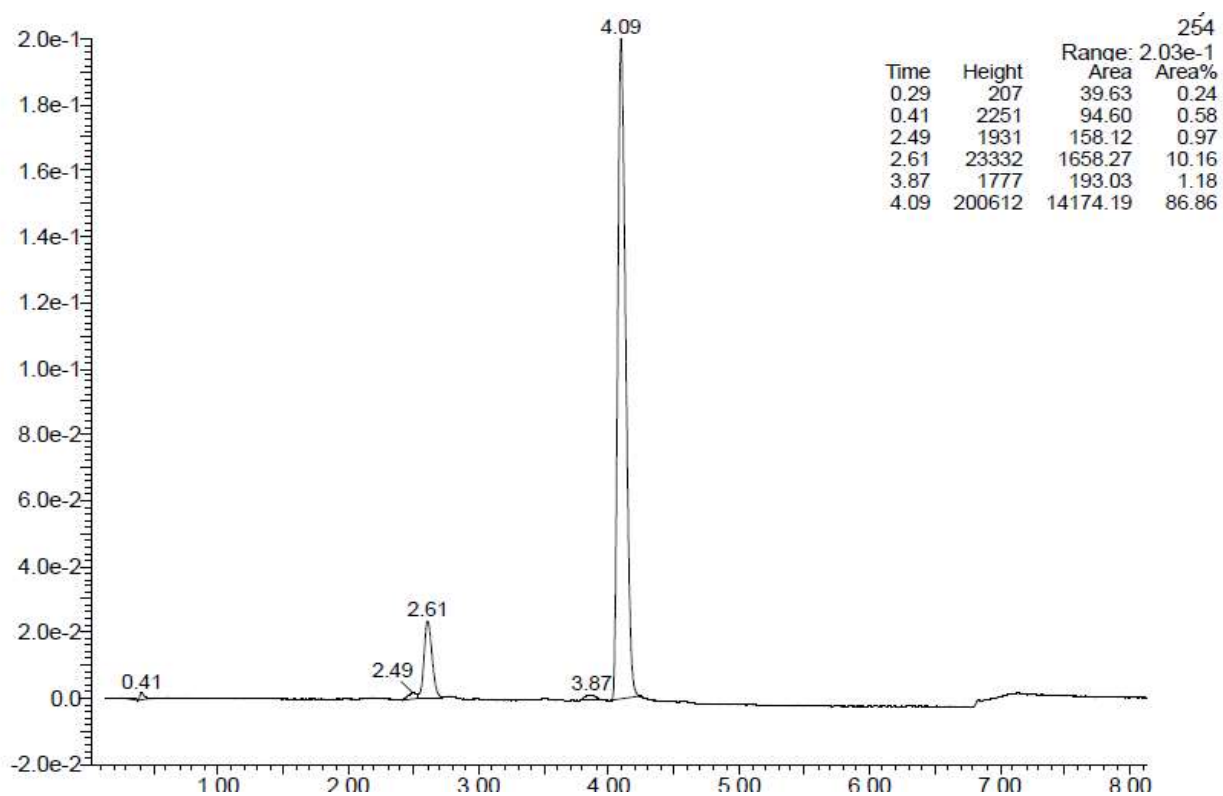
Mass spectra of **3j**



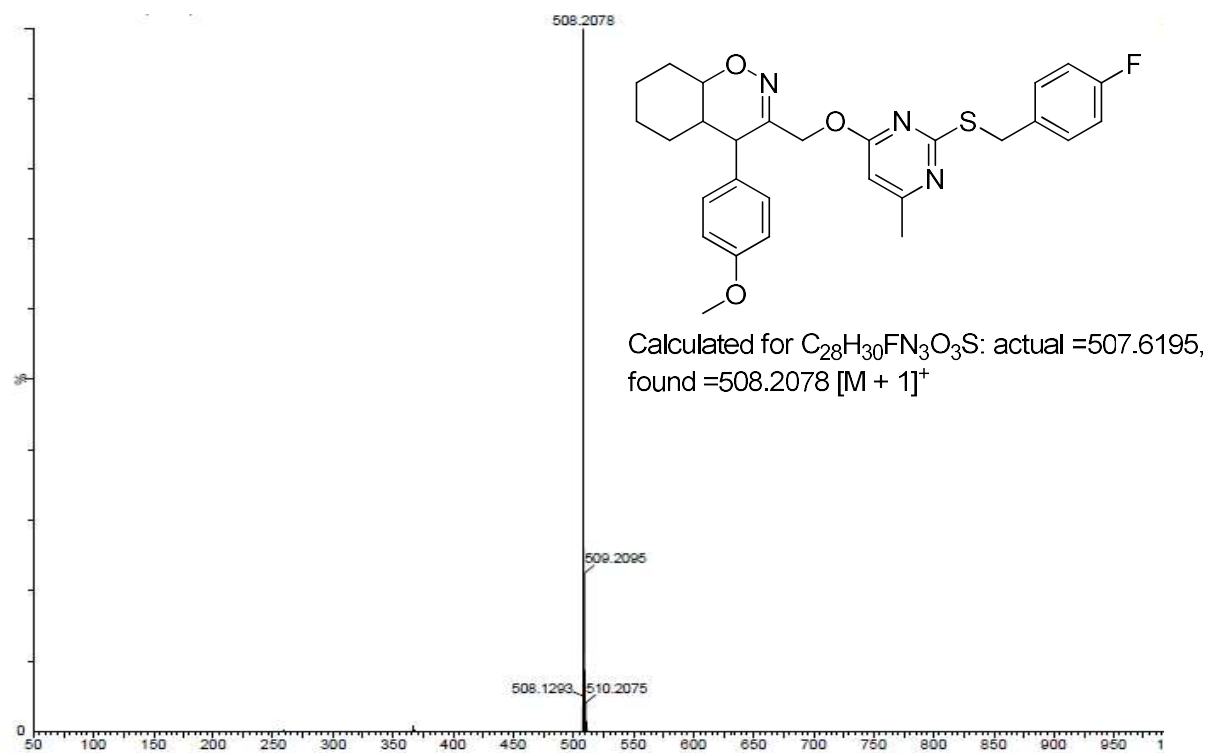
1H NMR OF **3k**



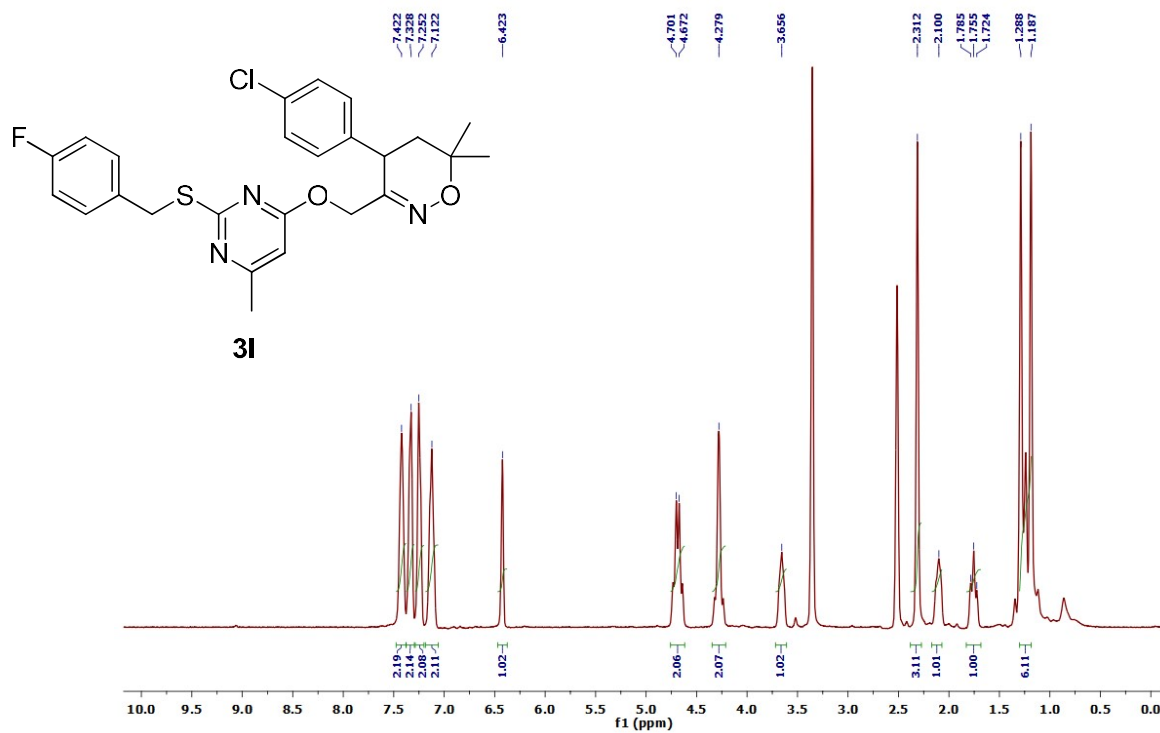
^{13}C NMR OF **3k**



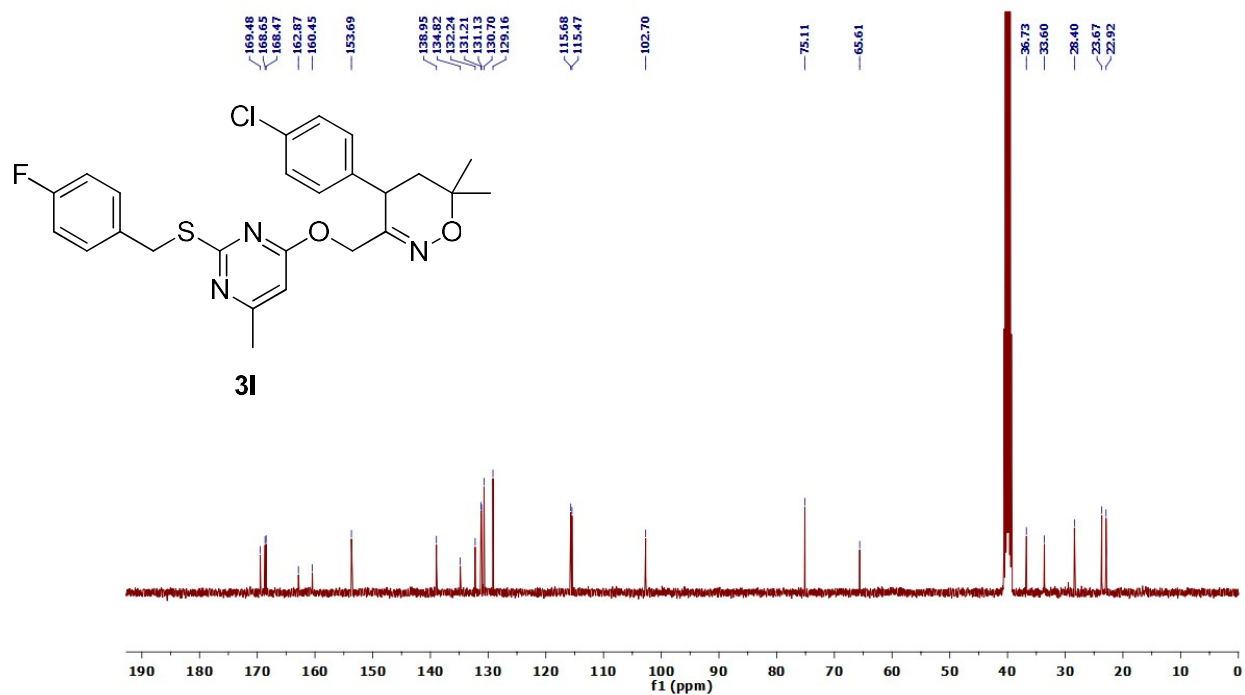
Liquid chromatogram of **3k**



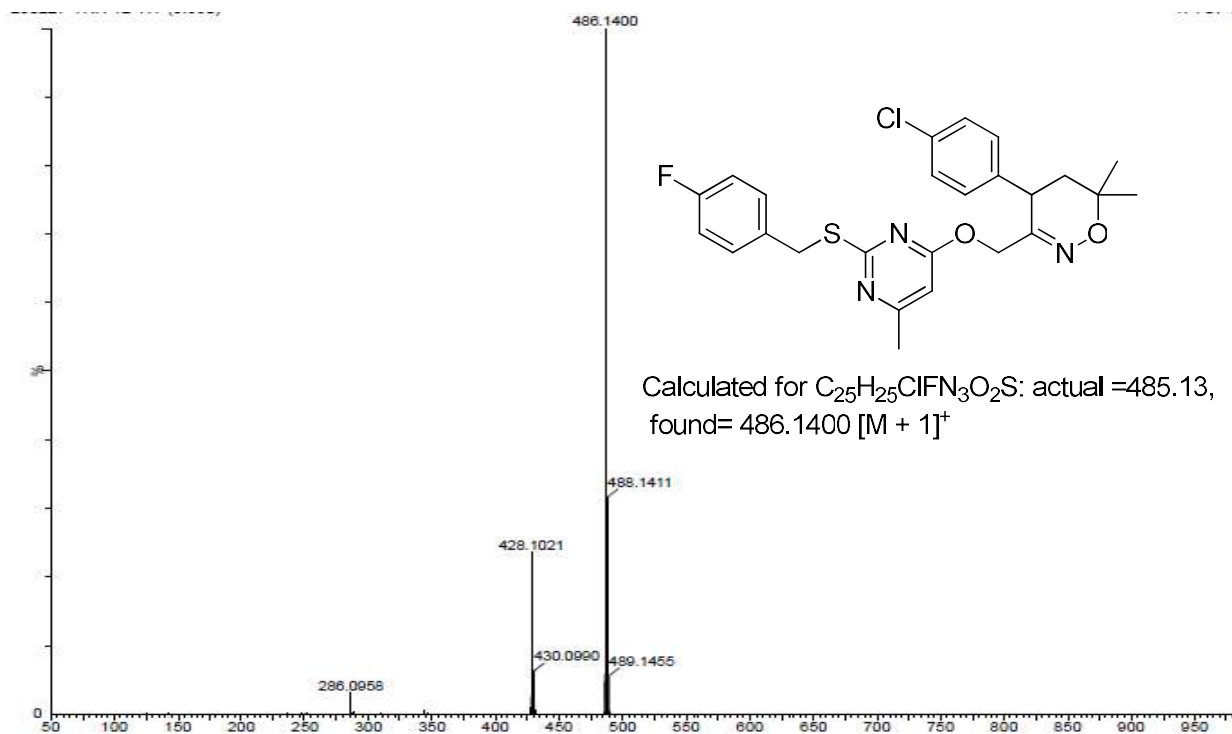
Mass spectra of **3k**



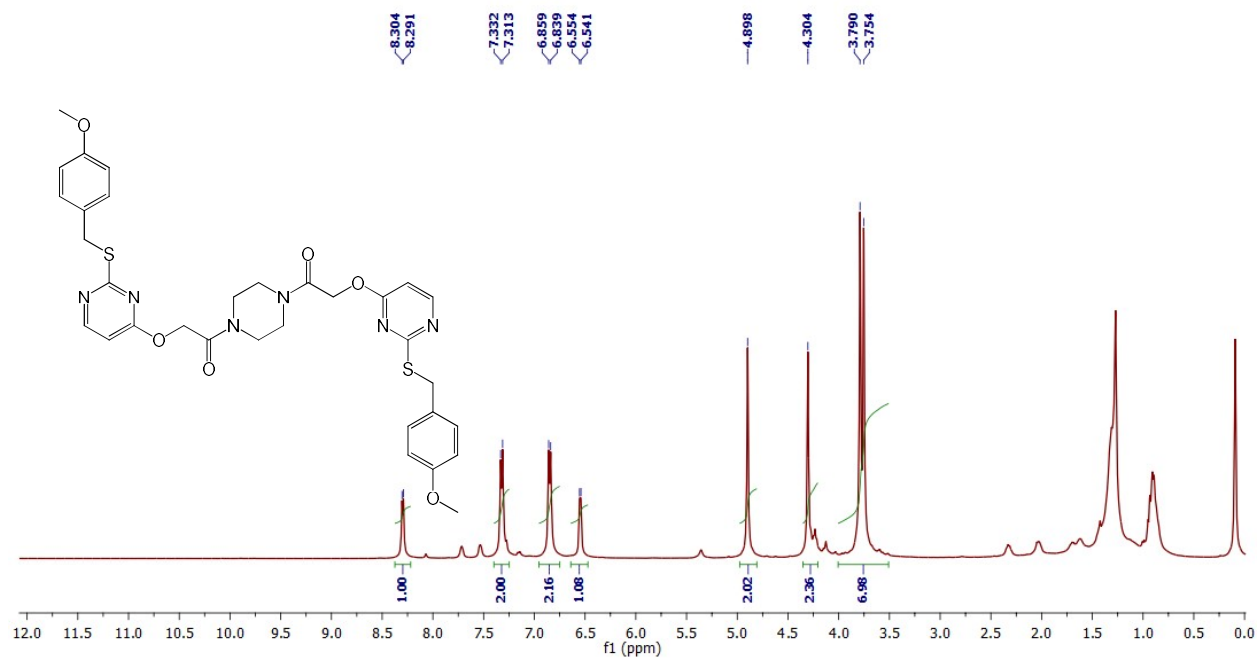
1H NMR OF **3l**



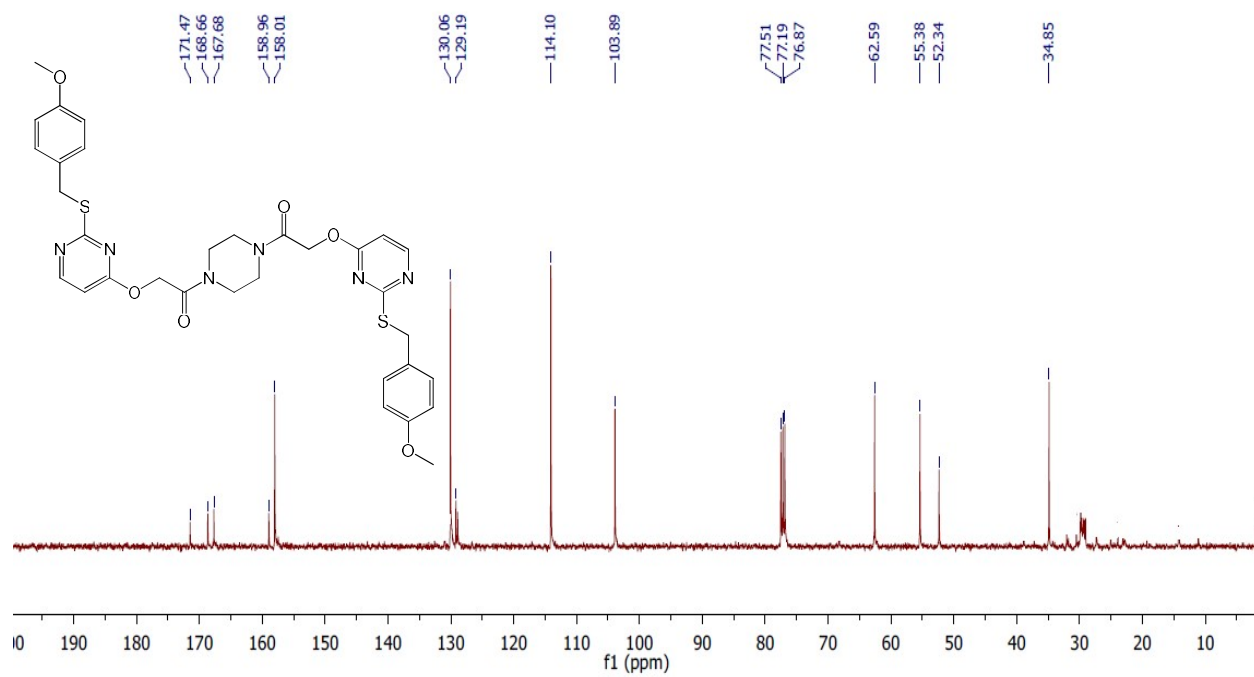
¹³C NMR OF 31



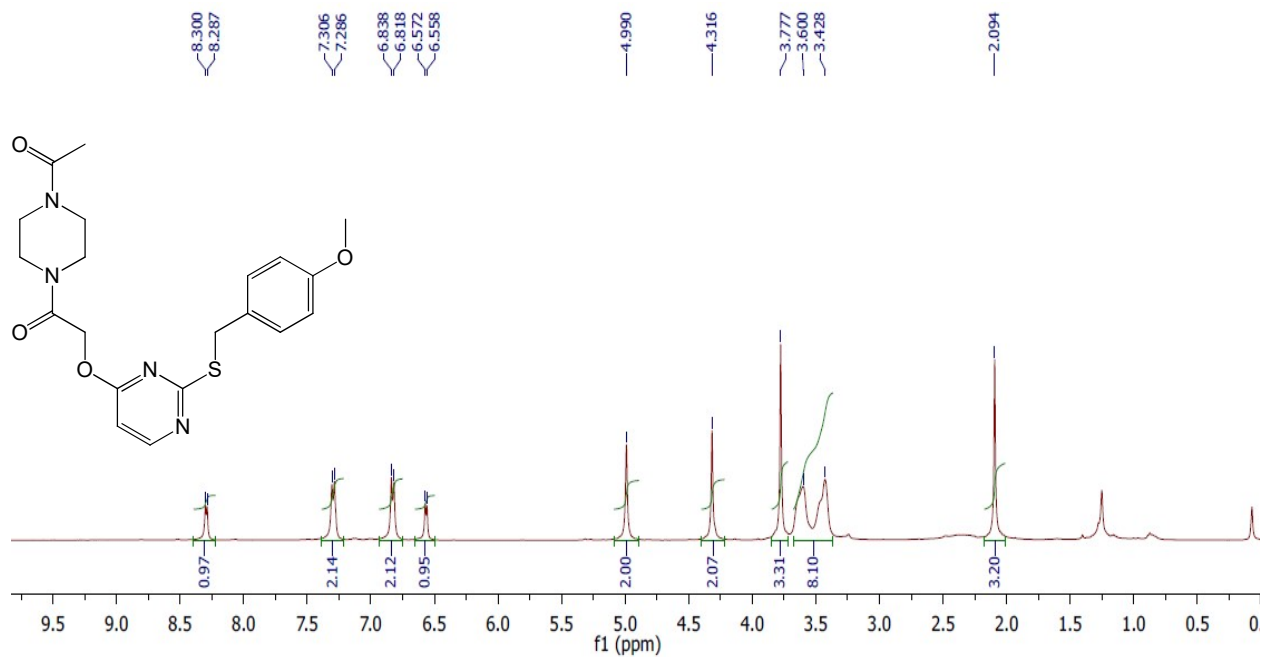
Mass spectra of 31



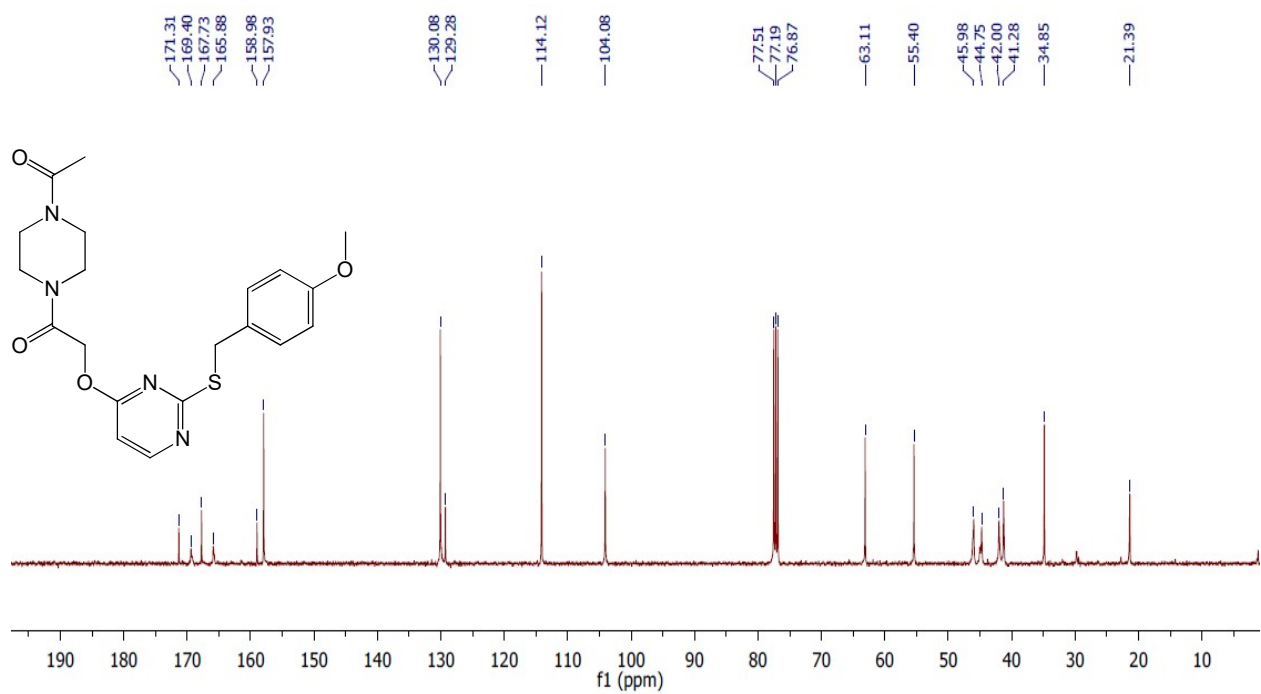
¹H NMR of **5a**



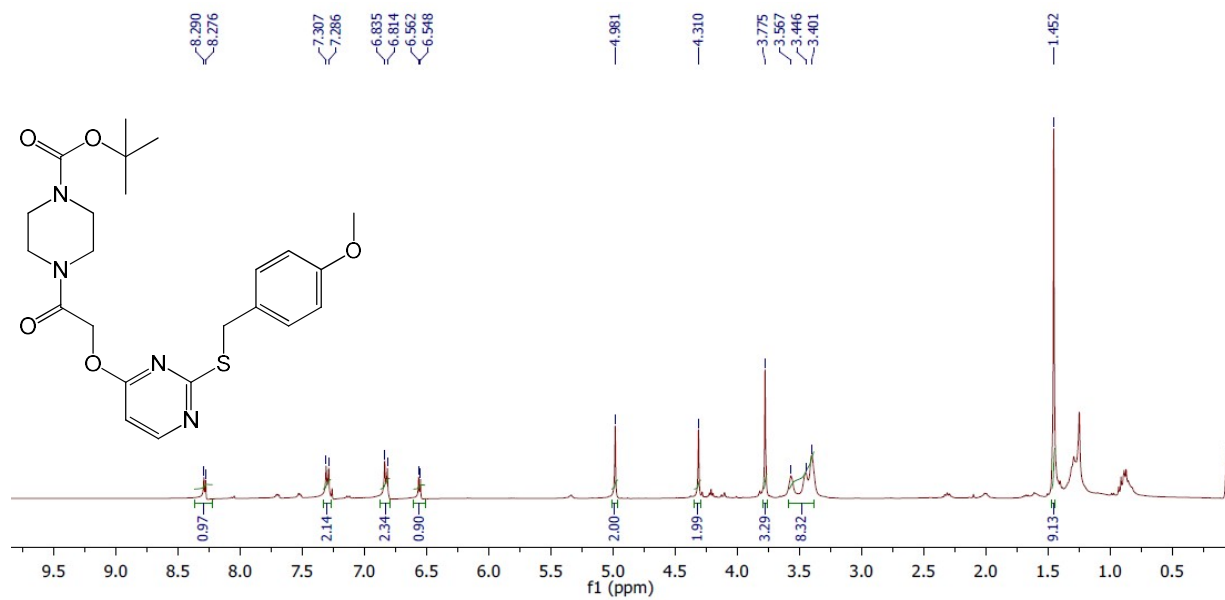
¹³C NMR of **5a**



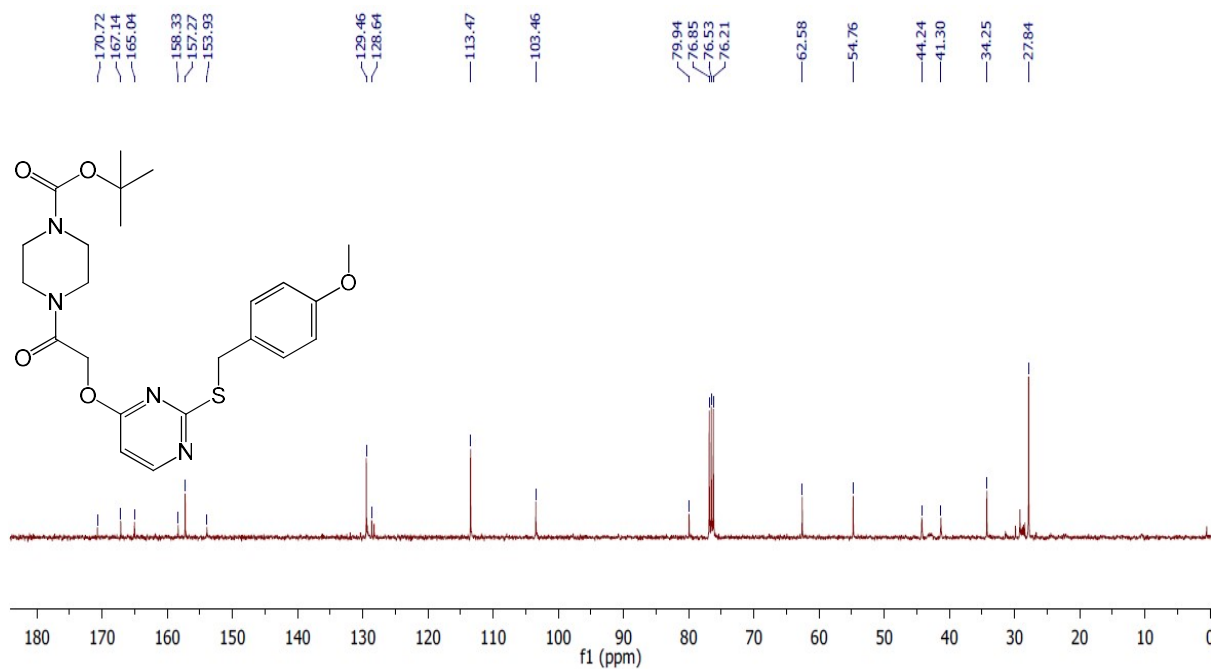
¹H NMR of **5b**



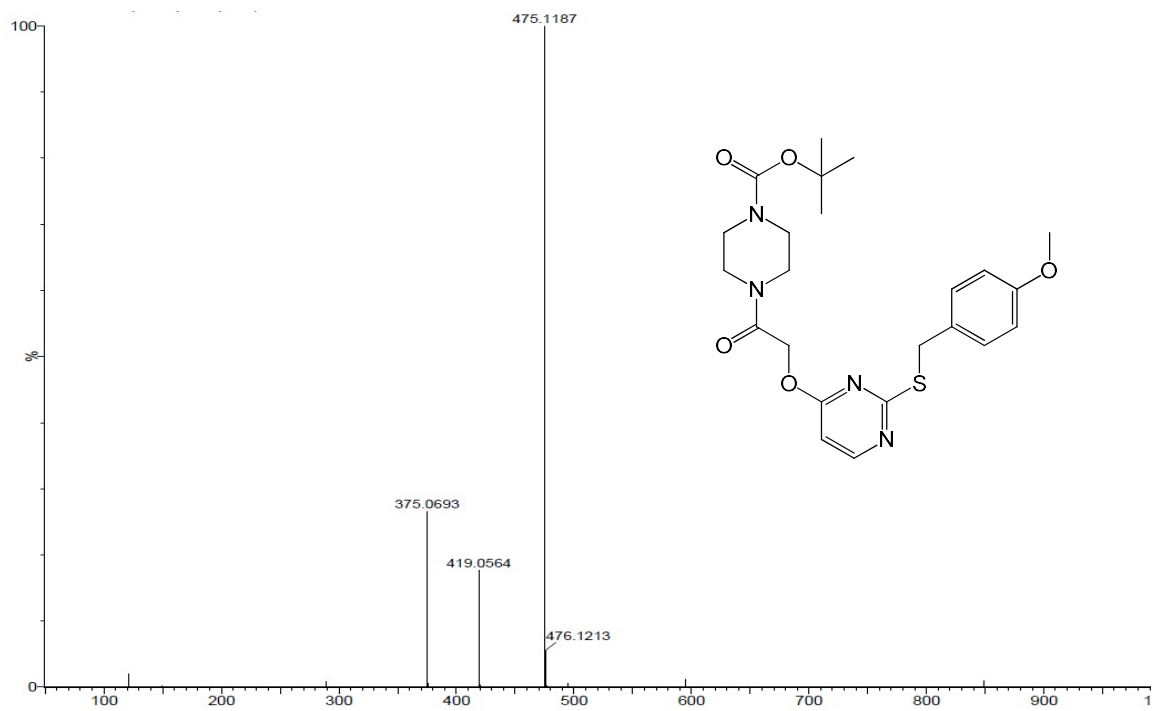
¹³C NMR of **5b**



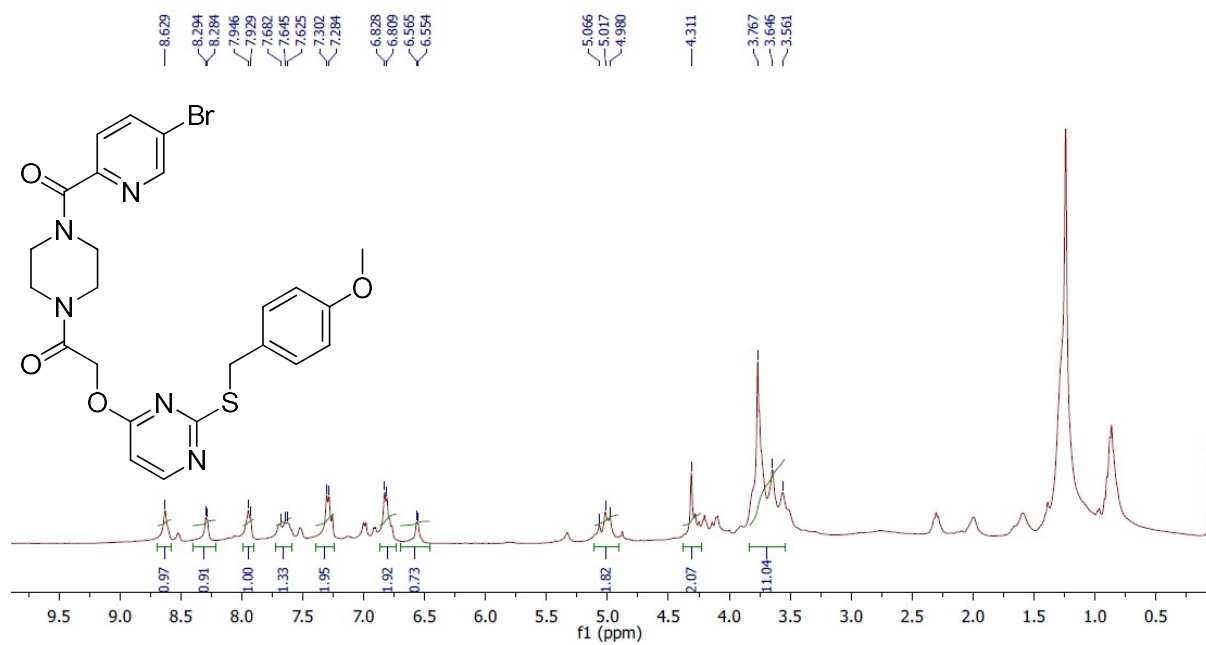
¹H NMR of **5c**



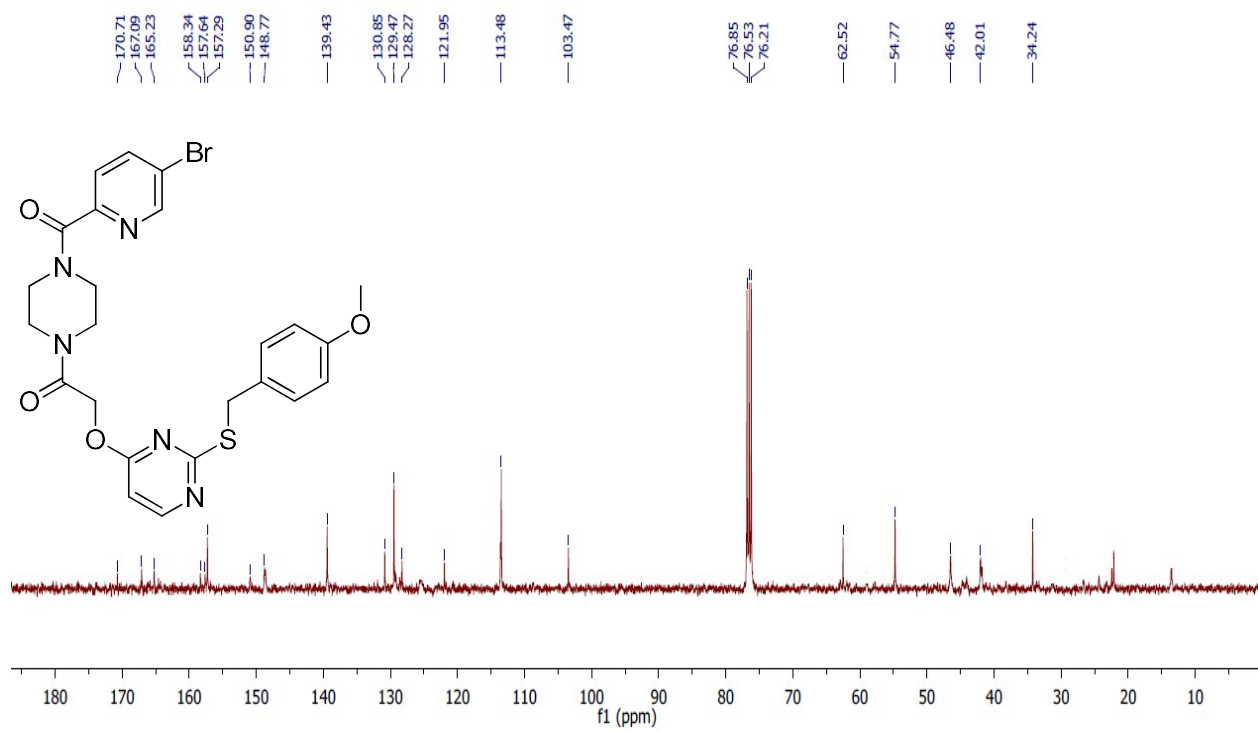
¹³C NMR of **5c**



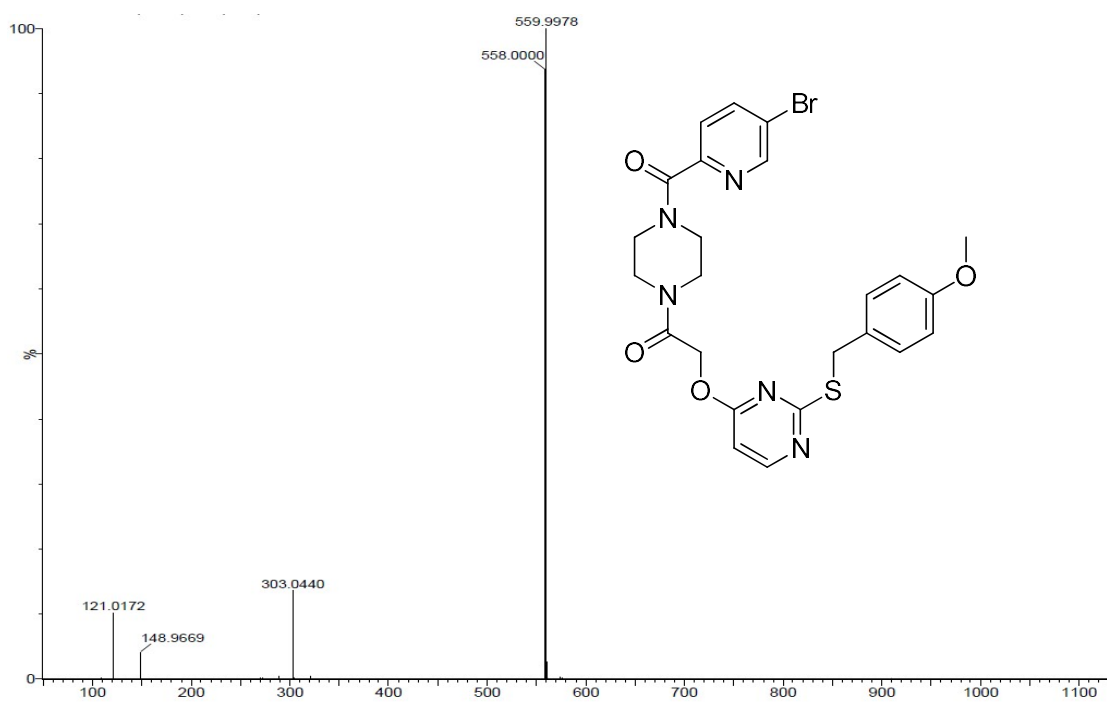
Mass spectra of 5c



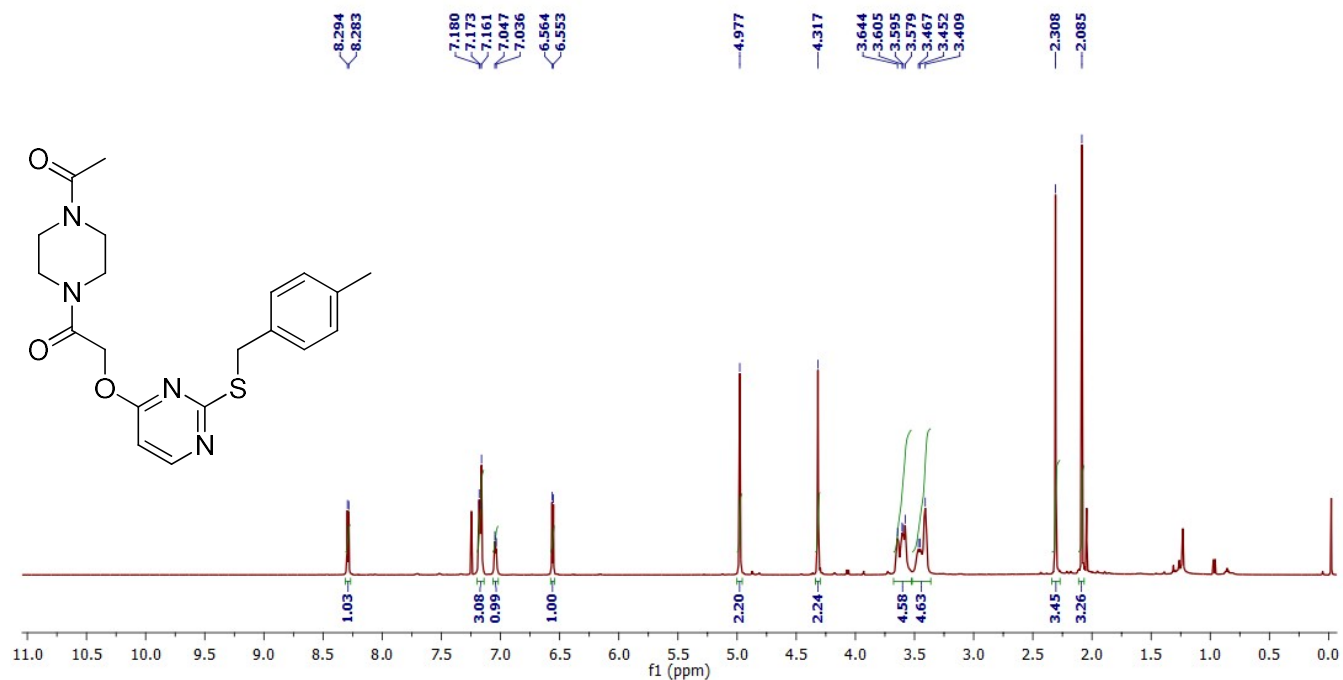
¹H NMR of 5d



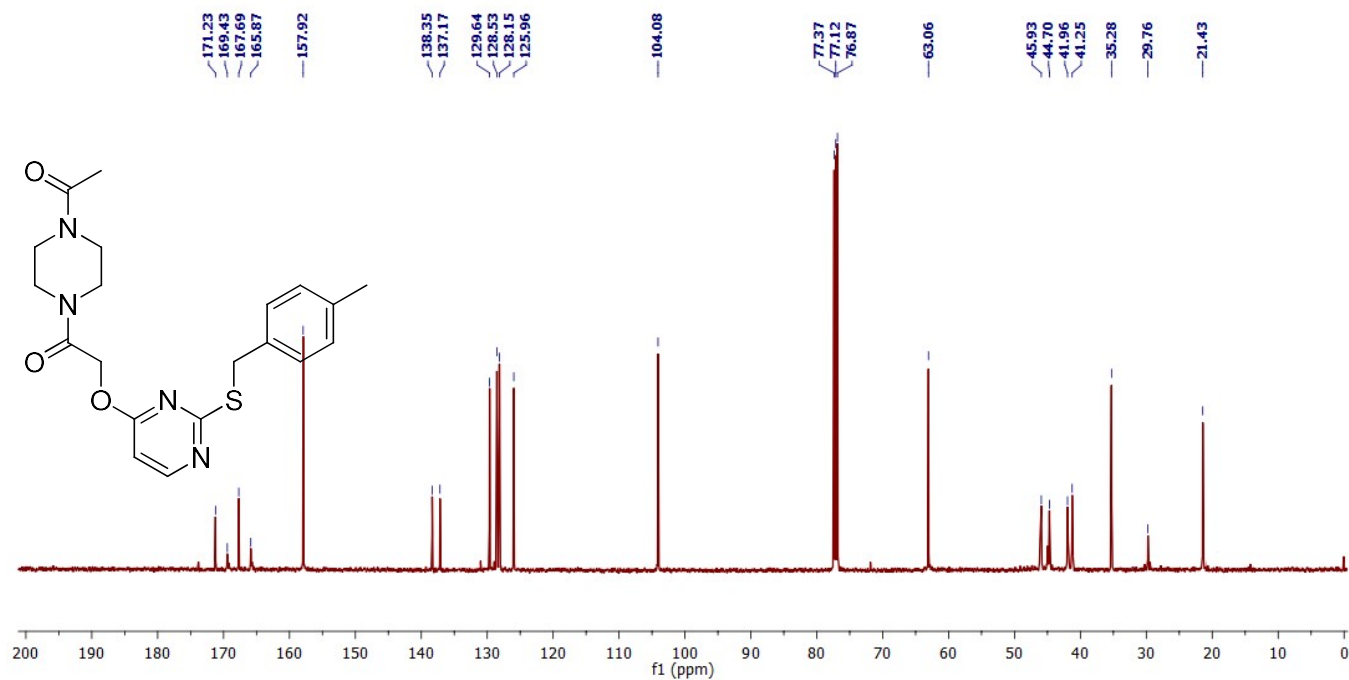
¹³C NMR of **5d**



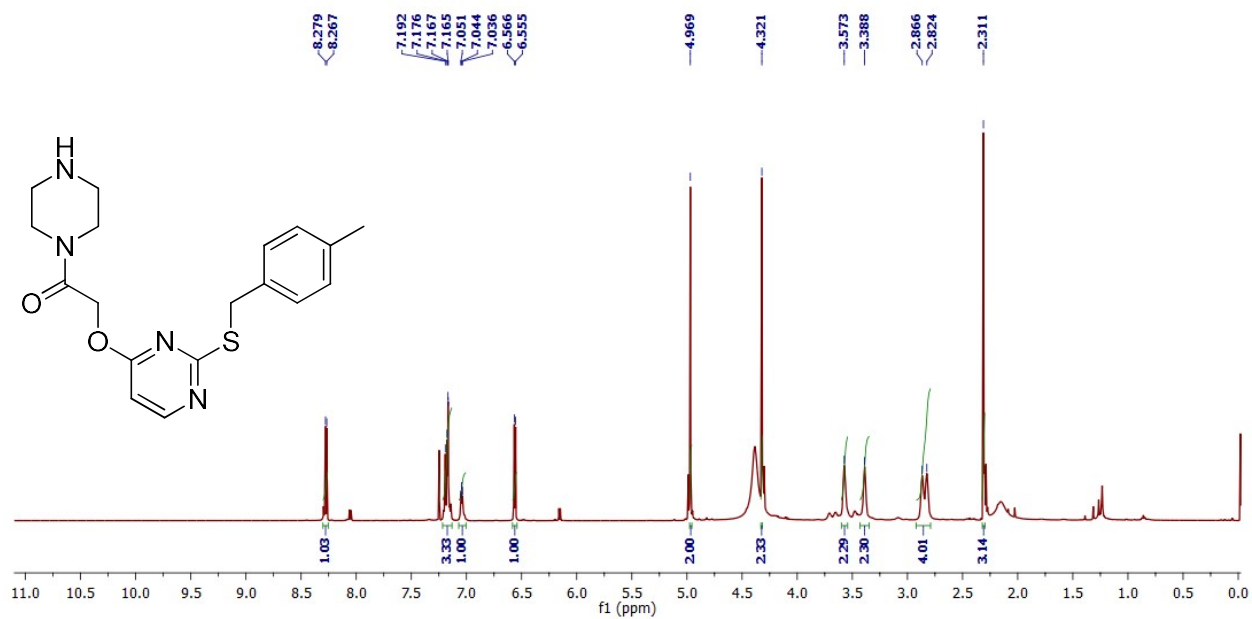
Mass spectra of **5d**



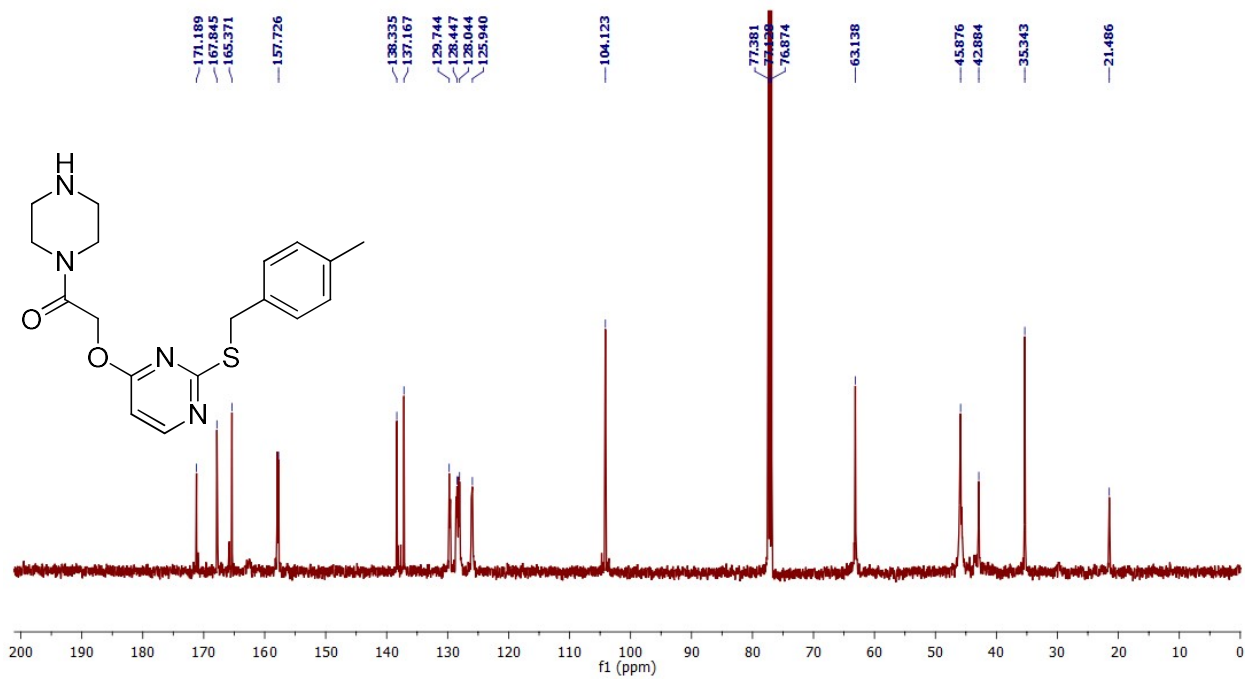
¹H NMR of 5e



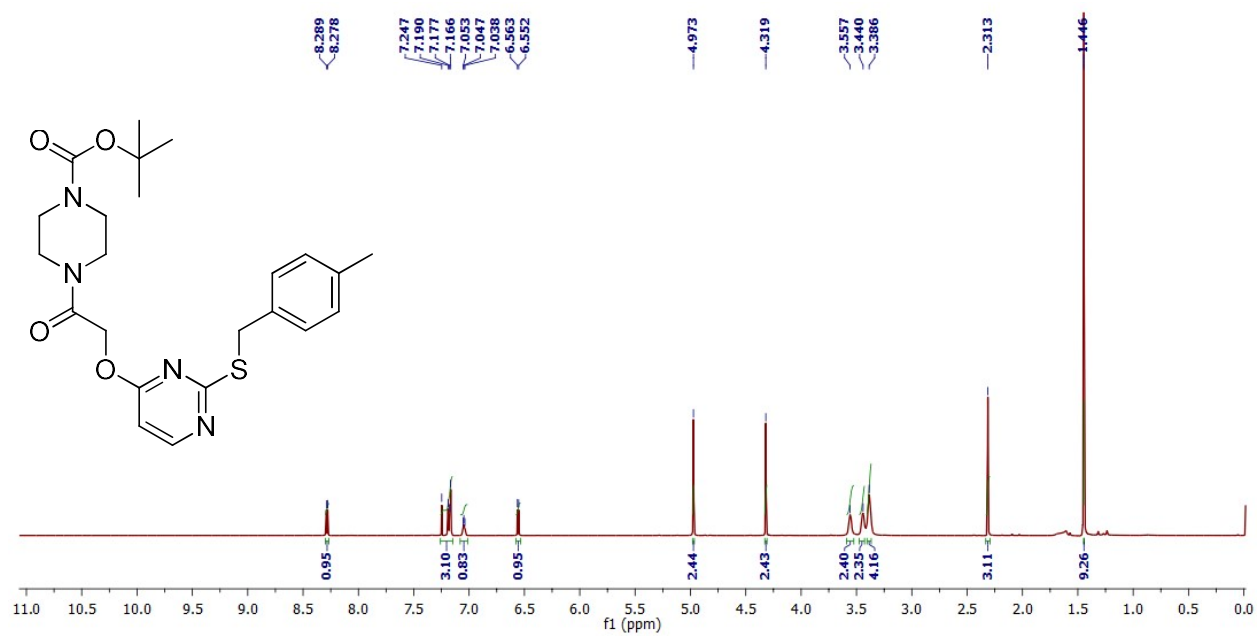
¹³C NMR of 5e



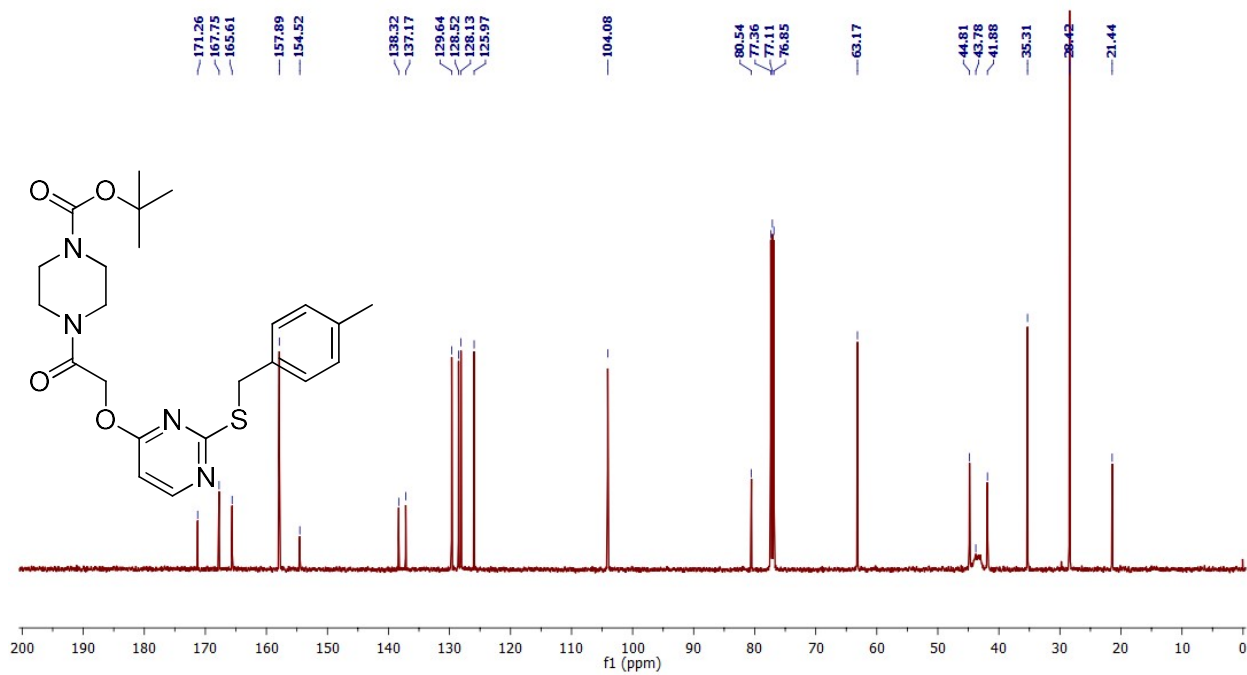
¹H NMR of 5f



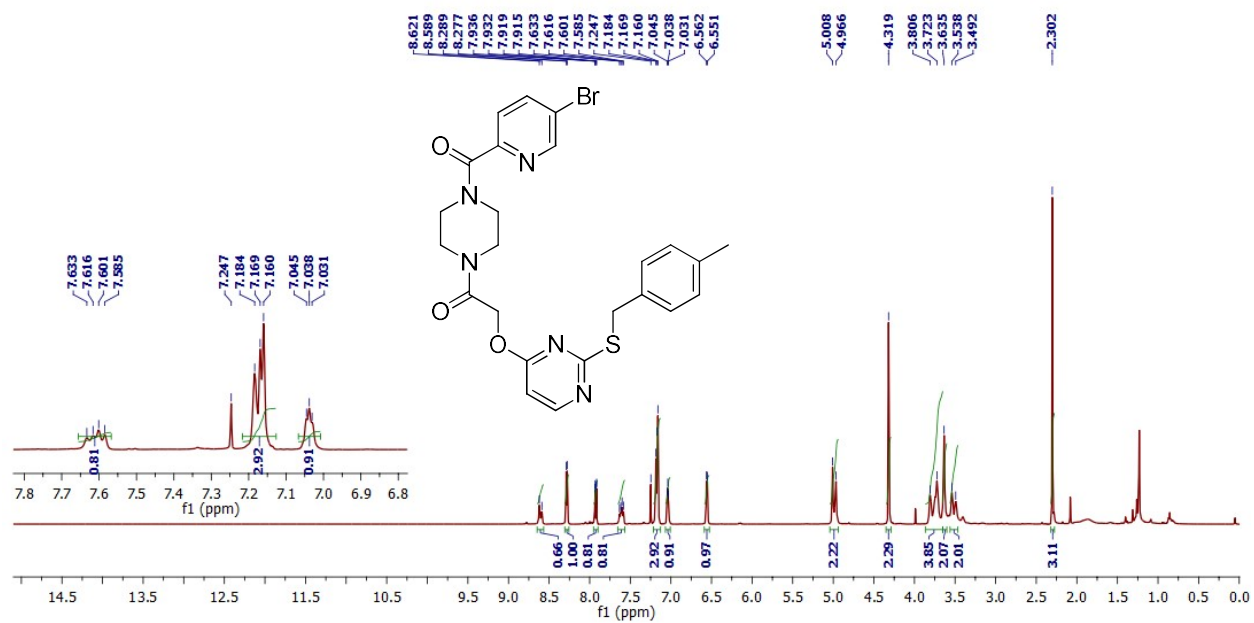
¹³C NMR of 5f



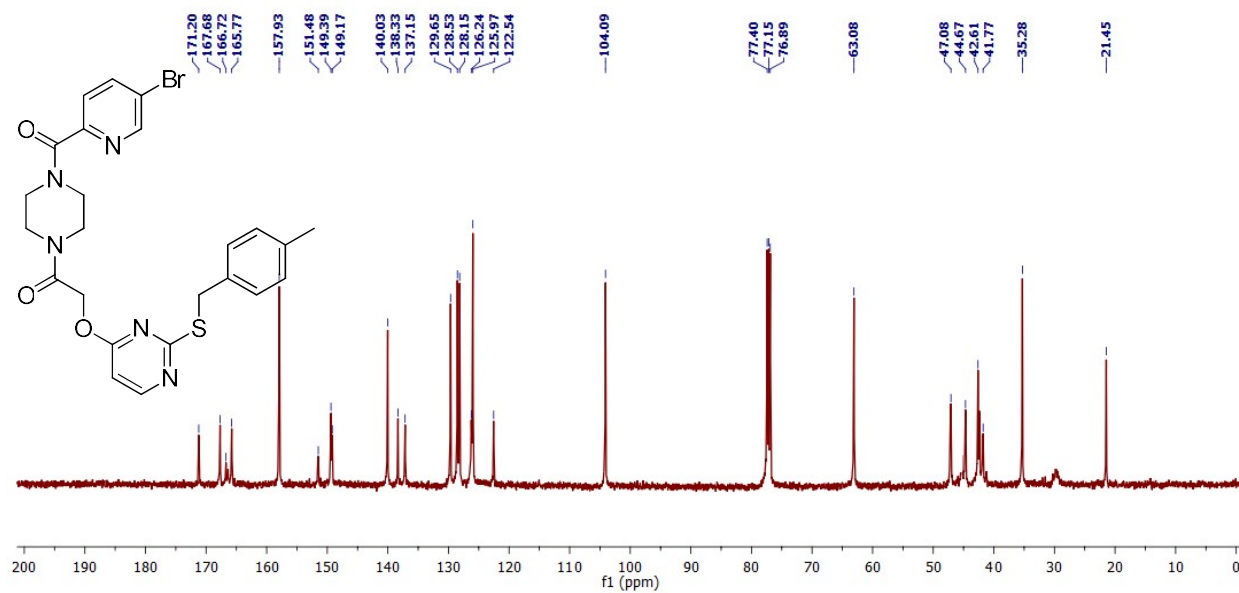
¹H NMR of 5g



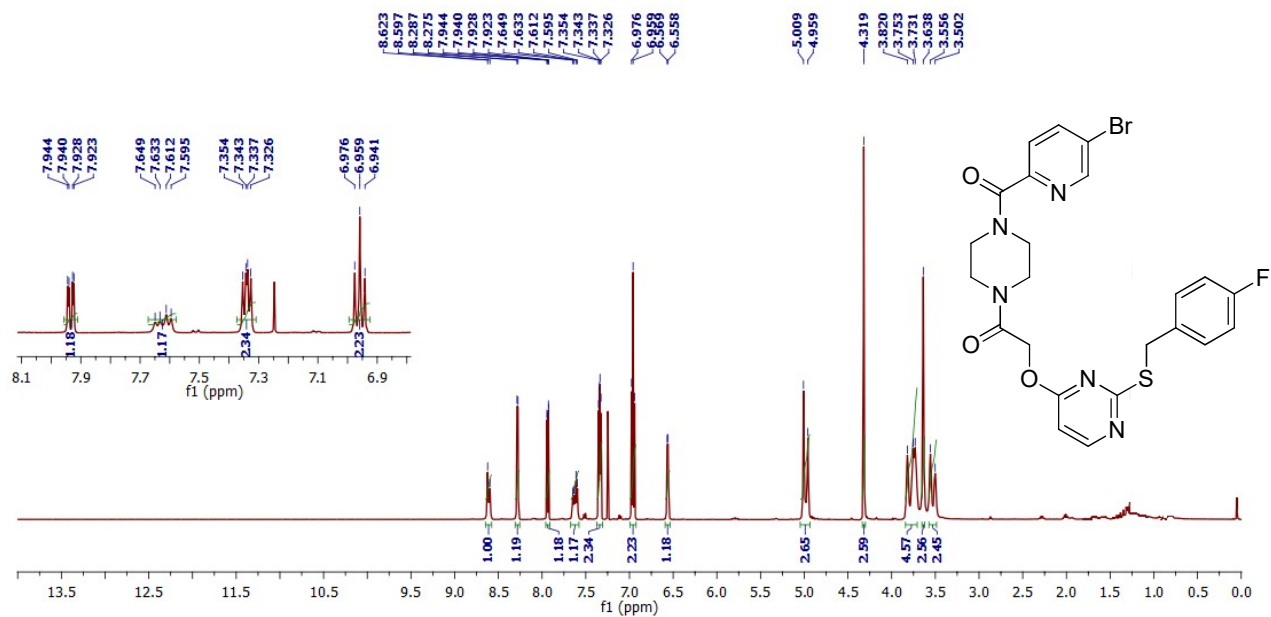
¹³C NMR of 5g



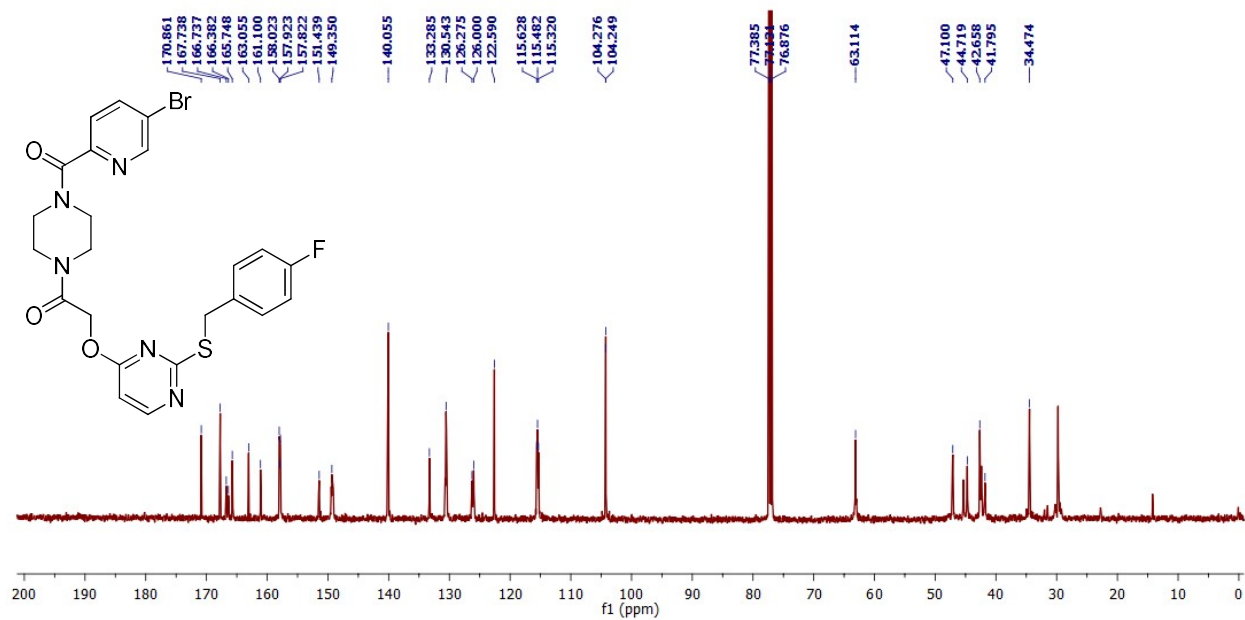
¹H NMR of 5h



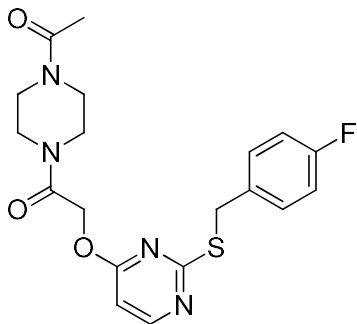
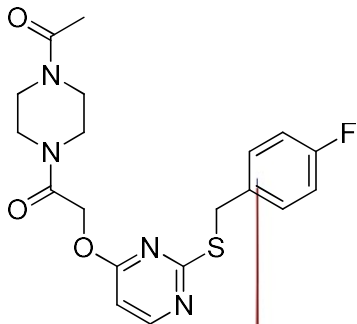
¹³C NMR of 5h

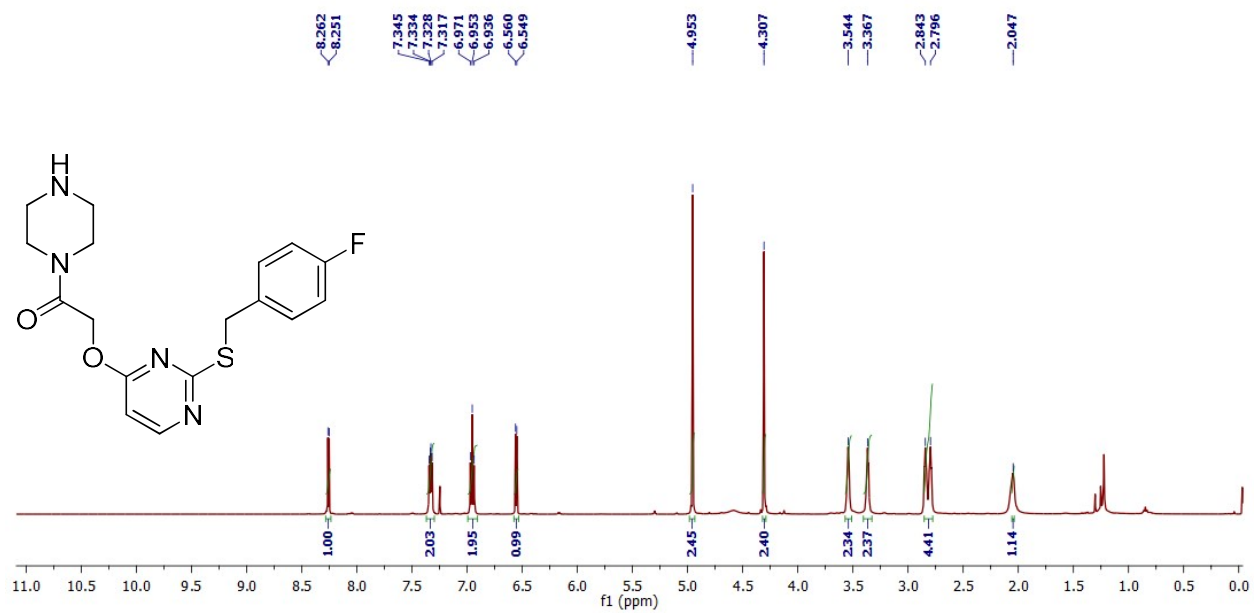


¹H NMR of 5i

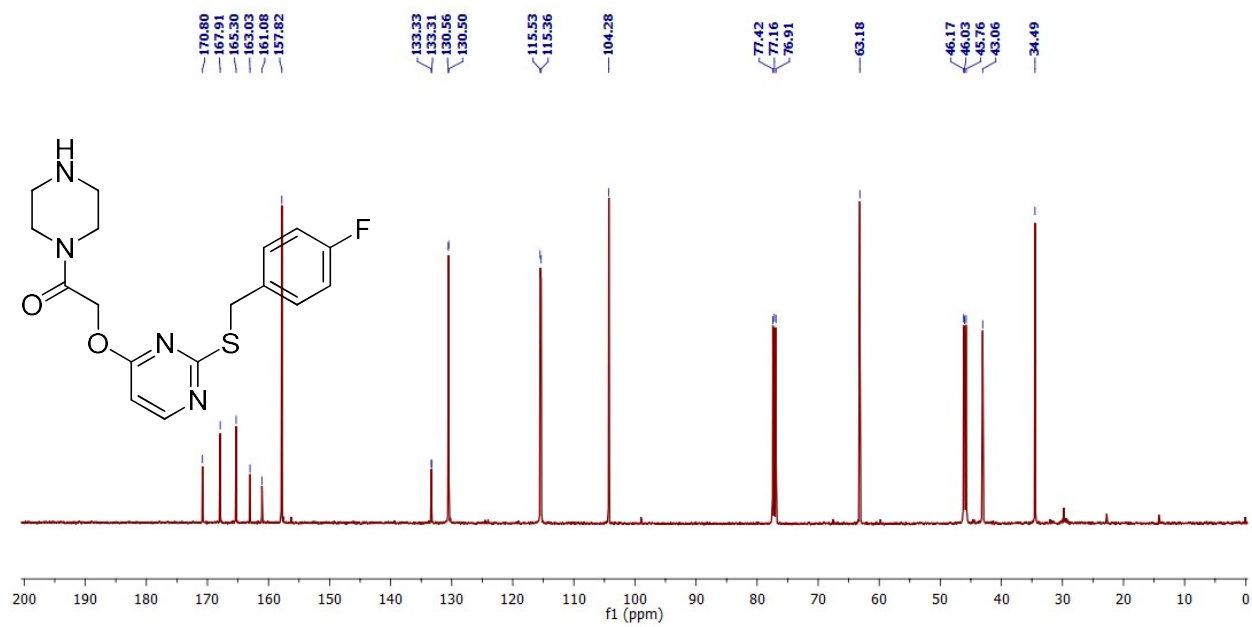


¹³C NMR of 5i

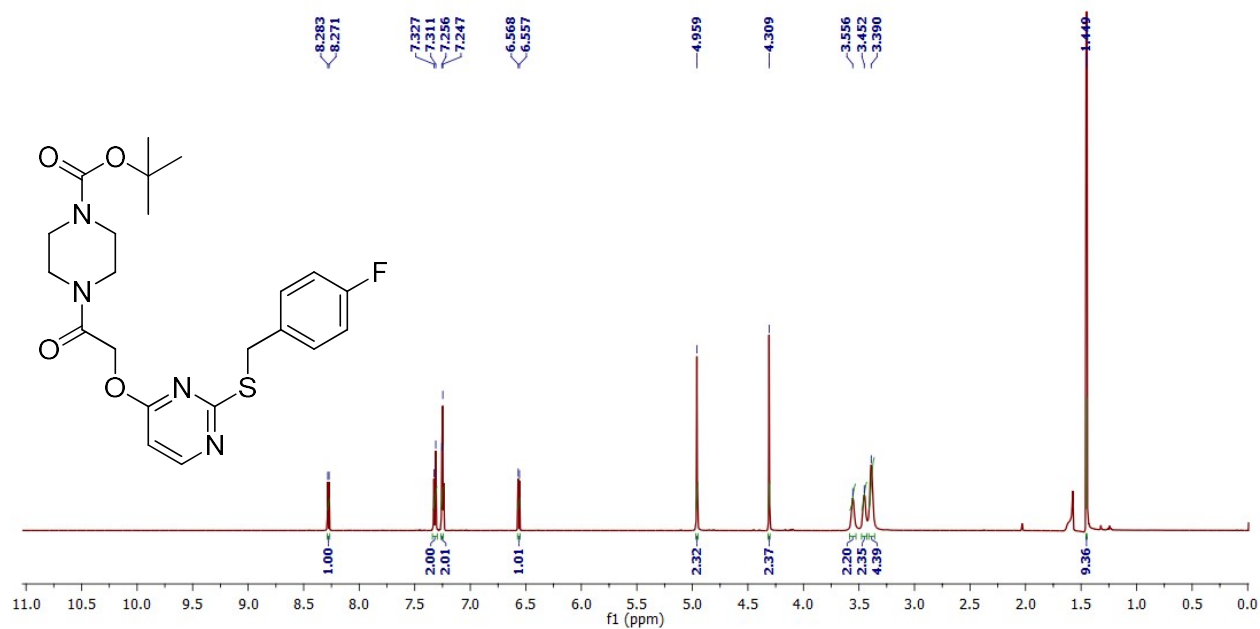
¹H NMR of 5j¹³C NMR of 5j



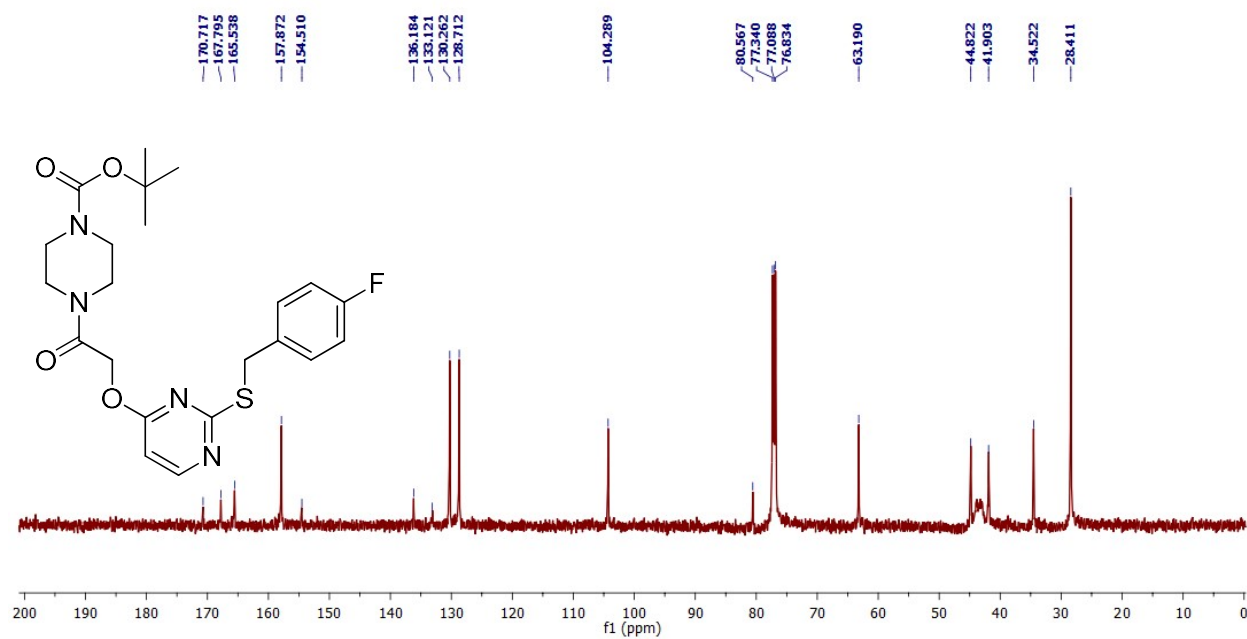
¹H NMR of 5k



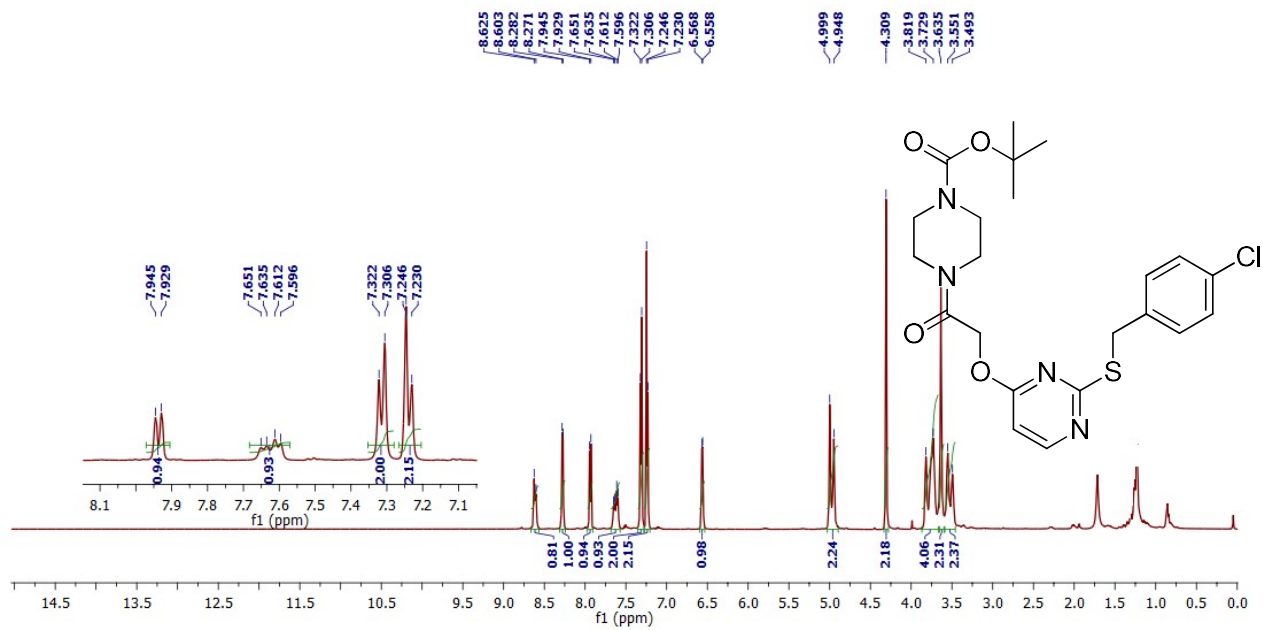
¹³C NMR of 5k



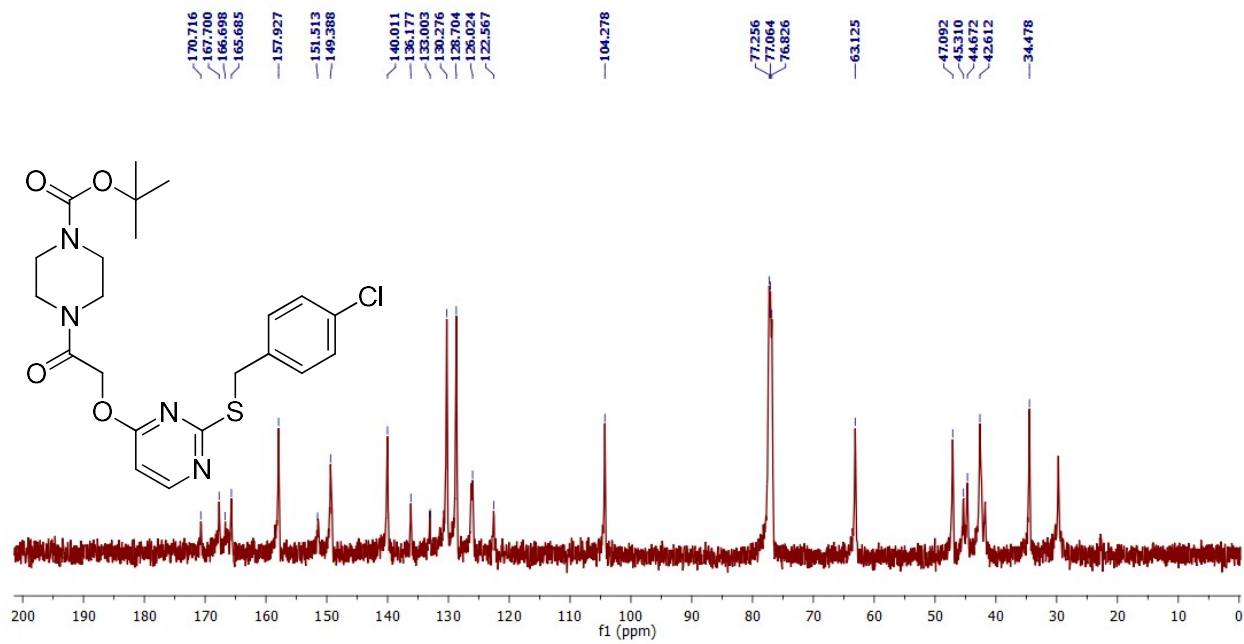
^1H NMR of 51



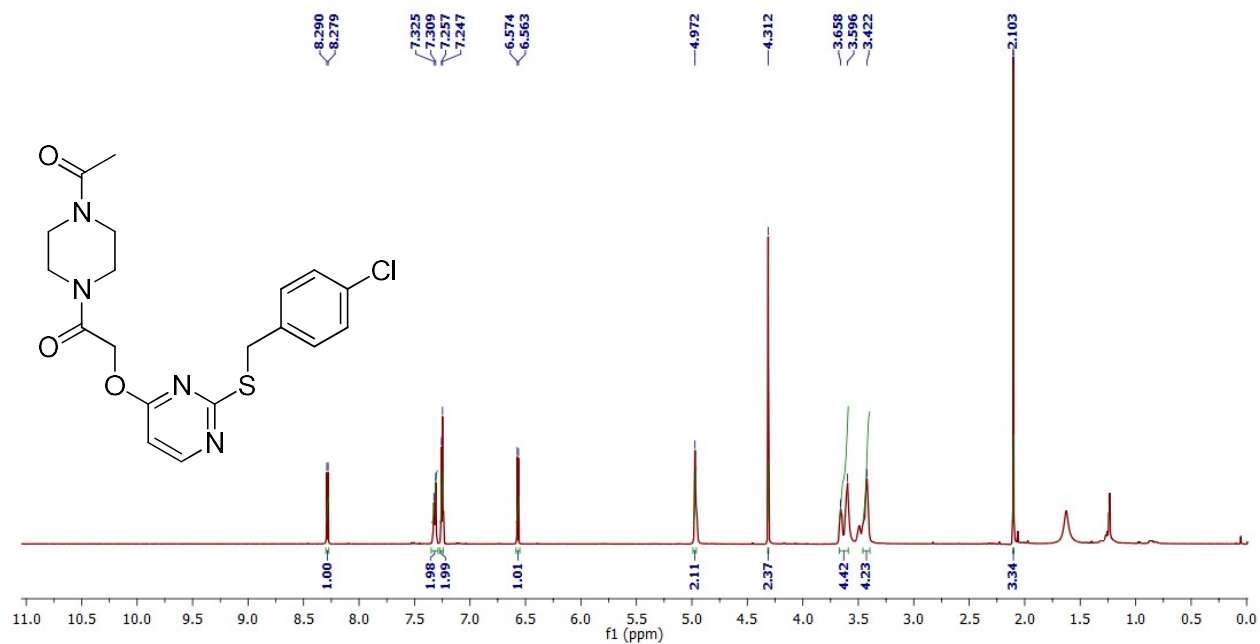
^{13}C NMR of 51



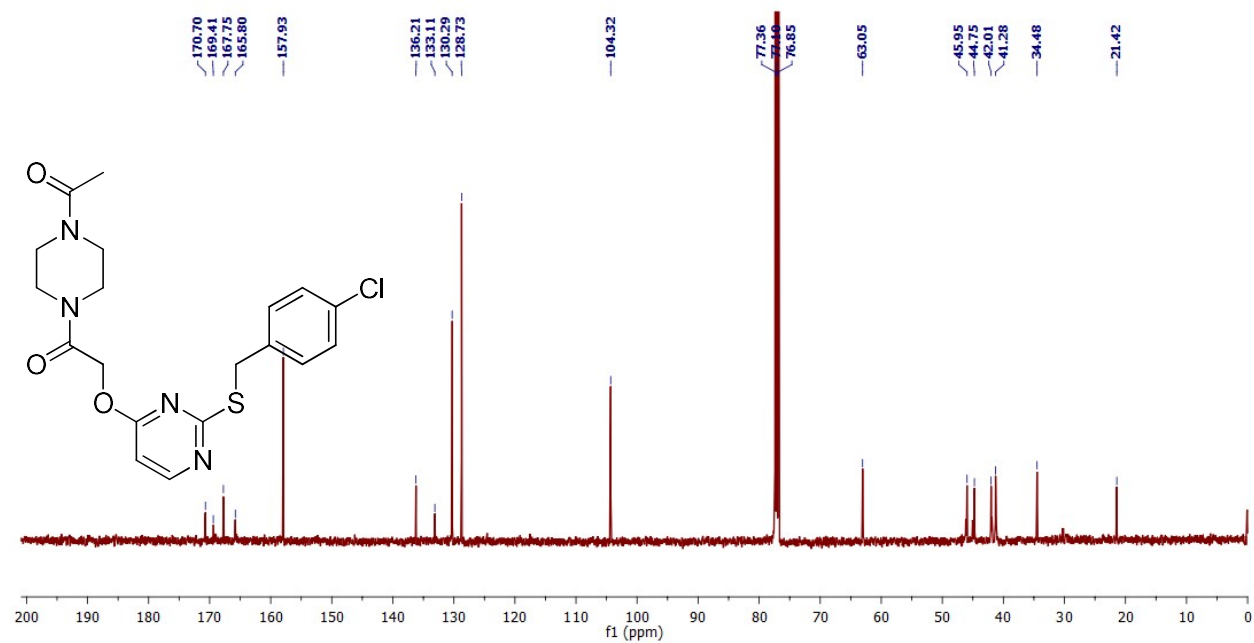
¹H NMR of 5m



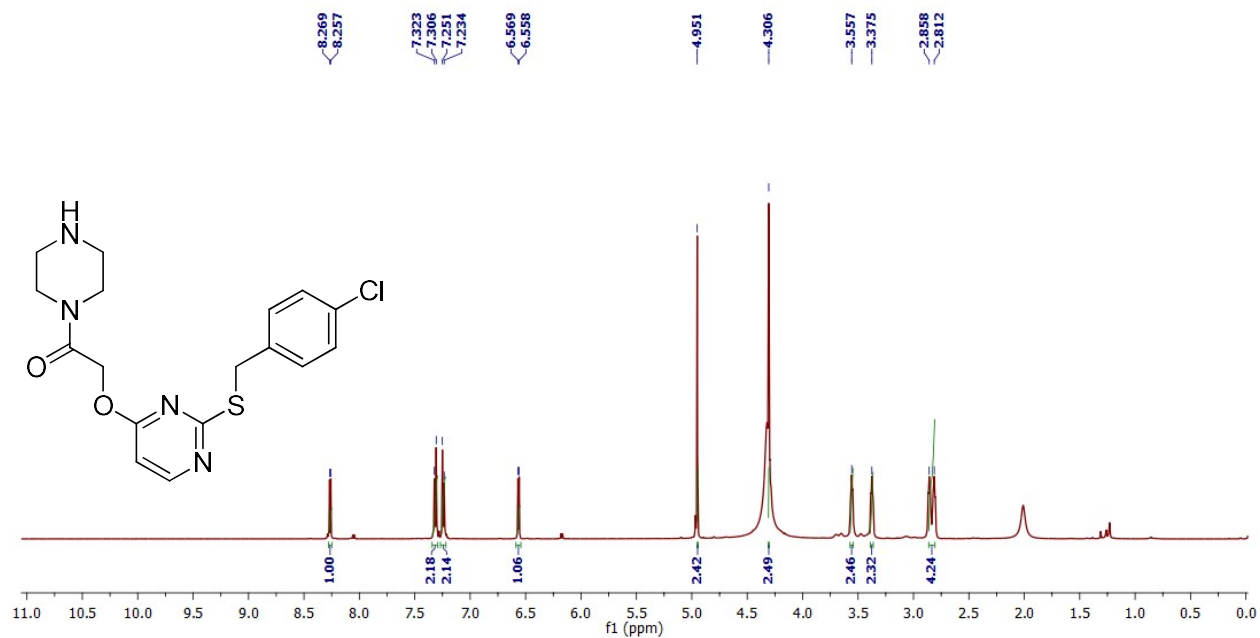
¹³C NMR of 5m



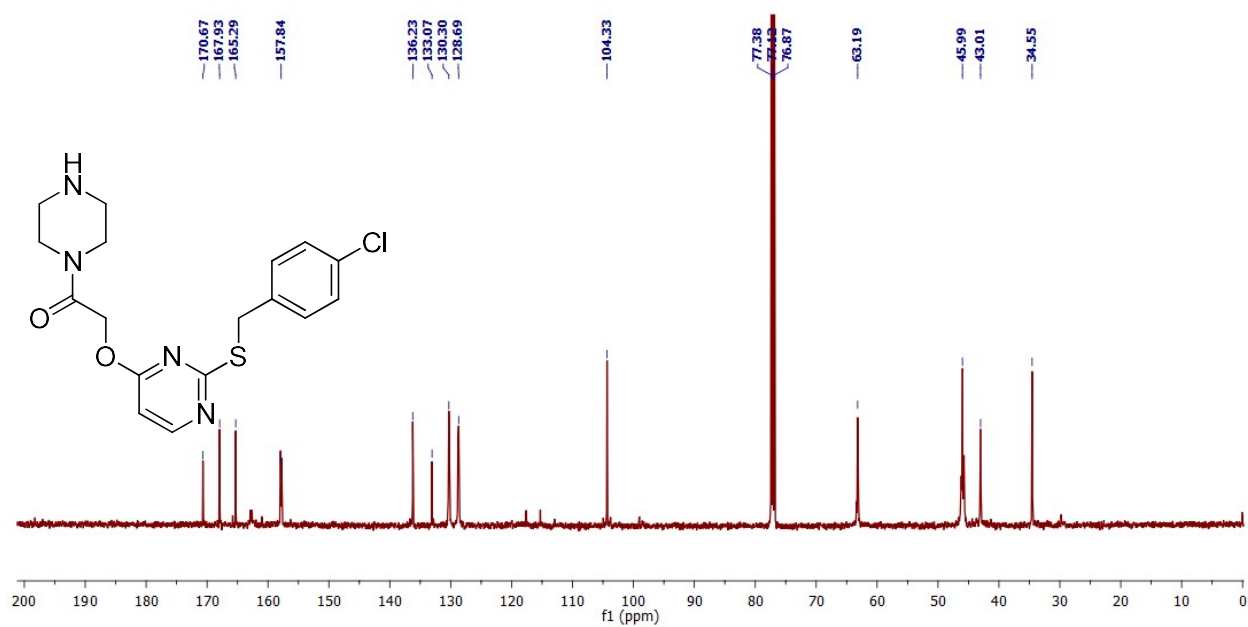
¹H NMR of 5n



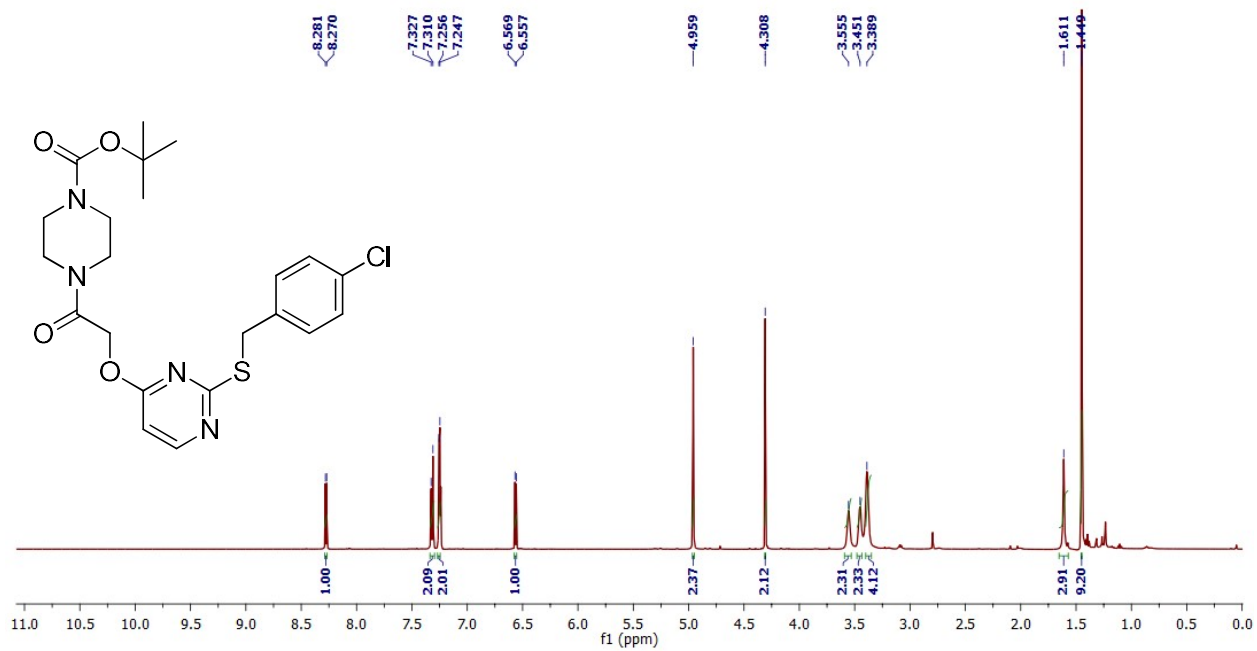
¹³C NMR of 5n



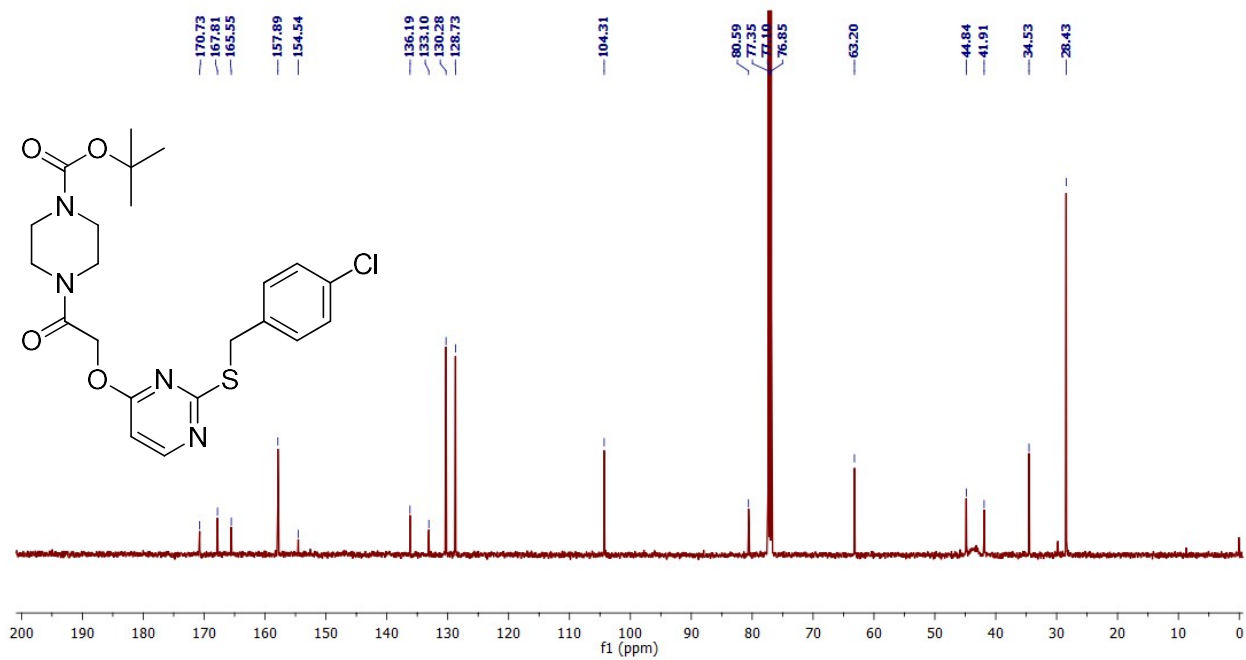
¹H NMR of **5o**



¹³C NMR of **5o**



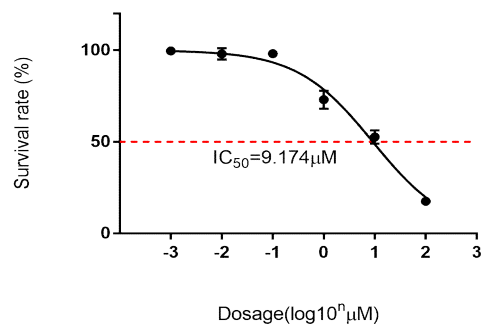
¹H NMR of 5p



¹³C NMR of 5p

IC₅₀ values of molecules **3(a-j)** & **5(a-p)** against MCF-7 cells

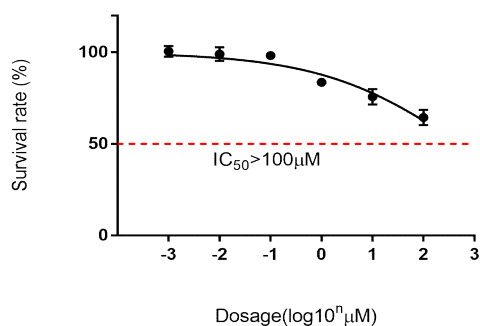
3a



- Cell line: MCF7(2000cells/per well|96-well plate)
- Treated time: 72hrs
- Assay: alamarBlue(4hrs incubated) N=3

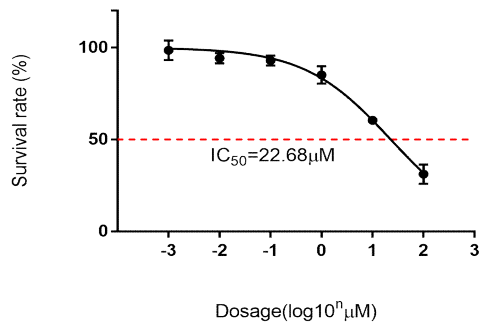
Conc.(μM)	Viability	
	AVE.	±SD
0	100	0.27
0.01	98.06	3.13
0.1	98.11	2.05
1	73.01	4.97
10	52.68	3.62
100	17.52	1.29

3b



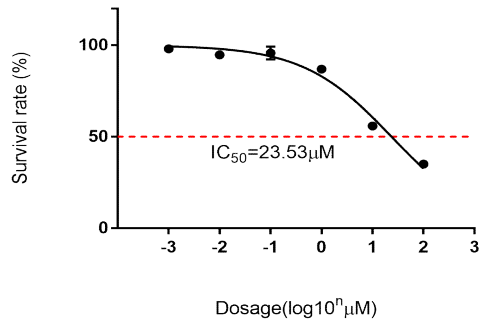
Conc.(μM)	Viability	
	AVE.	±SD
0	100.00	2.93
0.01	99.07	3.75
0.1	98.28	2.14
1	83.64	1.74
10	75.75	4.18
100	64.42	4.23

3c



Conc.(μM)	Viability	
	AVE.	±SD
0	100.00	5.34
0.01	94.21	2.83
0.1	92.98	2.71
1	85.10	4.75
10	60.48	0.85
100	31.20	5.23

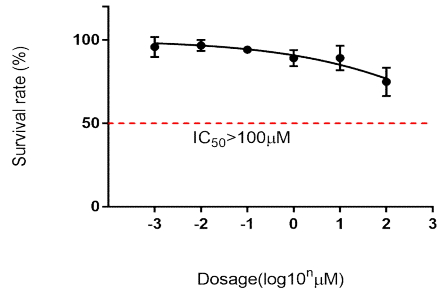
3d



- Cell line: MCF7(2000cells/per well|96-well plate)
- Treated time: 72hrs
- Assay: alamarBlue(4hrs incubated) N=3

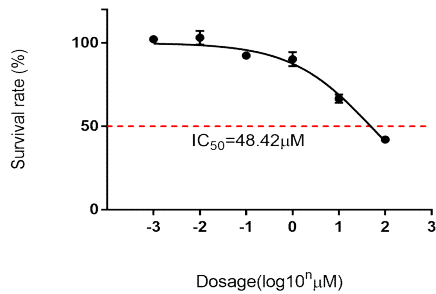
Conc.(μM)	Viability	
	AVE.	$\pm\text{SD}$
0	100.00	0.76
0.01	94.73	1.24
0.1	95.79	3.50
1	86.90	1.67
10	55.82	0.61
100	35.09	0.30

3e



Conc.(μM)	Viability	
	AVE.	$\pm\text{SD}$
0	100.00	5.97
0.01	96.79	3.36
0.1	94.21	1.42
1	89.20	4.87
10	89.28	7.38
100	74.97	8.48

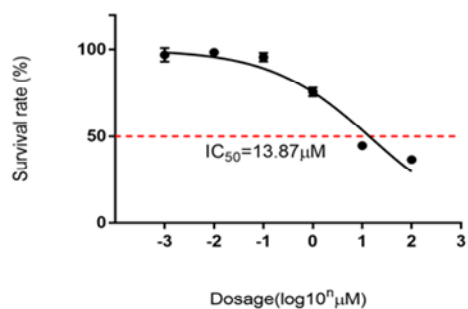
3f



Conc.(μM)	Viability	
	AVE.	$\pm\text{SD}$
0	100.00	1.36
0.01	103.18	4.10
0.1	92.45	1.15
1	90.23	4.19
10	66.65	2.52
100	42.01	0.80

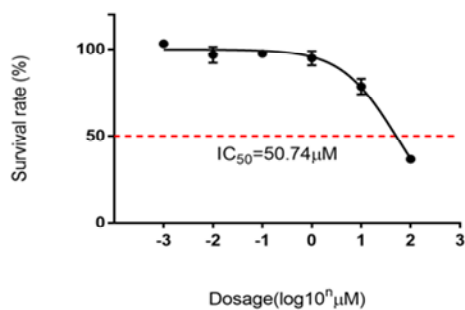
- Cell line: MCF7(2000cells/per well|96-well plate)
- Treated time: 72hrs
- Assay: alamarBlue(4hrs incubated) N=3

3g



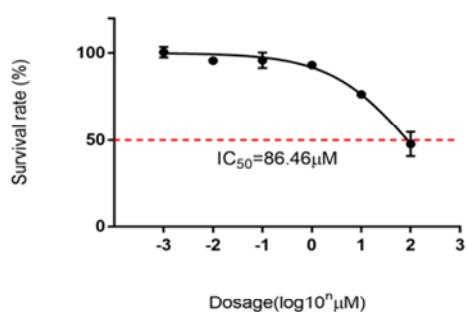
Conc.(μM)	Viability	
	AVE.	±SD
0	100.00	3.81
0.01	98.47	1.22
0.1	95.72	2.40
1	75.82	2.54
10	44.77	2.26
100	36.87	2.04

3h

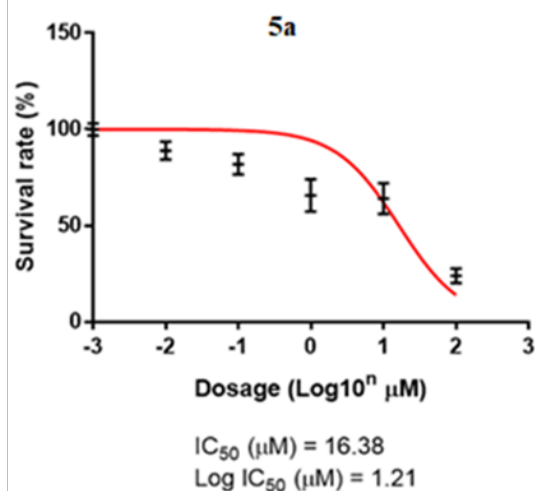


Conc.(μM)	Viability	
	AVE.	±SD
0	100.00	2.21
0.01	96.84	4.58
0.1	97.52	1.24
1	94.95	4.06
10	78.76	4.46
100	36.73	1.30

3j

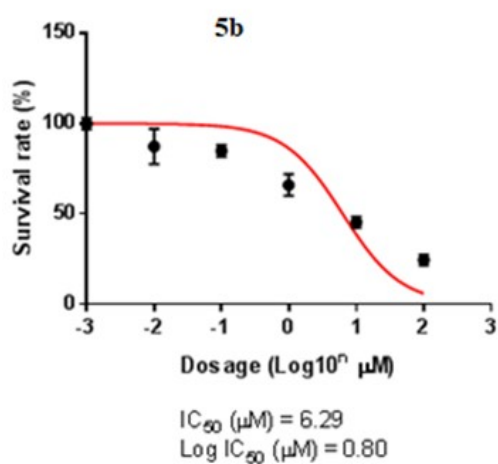


Conc.(μM)	Viability	
	AVE.	±SD
0	100.00	3.03
0.01	95.66	1.14
0.1	95.82	4.39
1	93.15	1.66
10	76.31	0.98
100	47.83	6.86



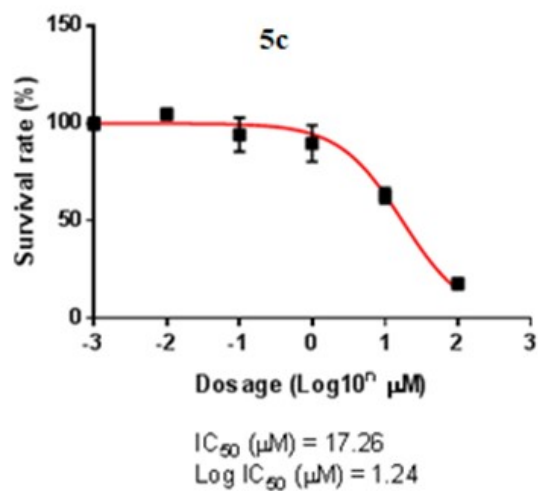
- Cell line: MCF7 (2000 cells/per well⁹⁶)
- Treated time: 72hrs
- Assay: MTT (90mins incubated)

Conc. (μM)	Viability	
	AVE.	\pm SD.
0	100.00	3.24
0.01	88.99	4.69
0.1	81.77	5.28
1	65.64	8.43
10	64.11	8.07
100	23.90	3.79



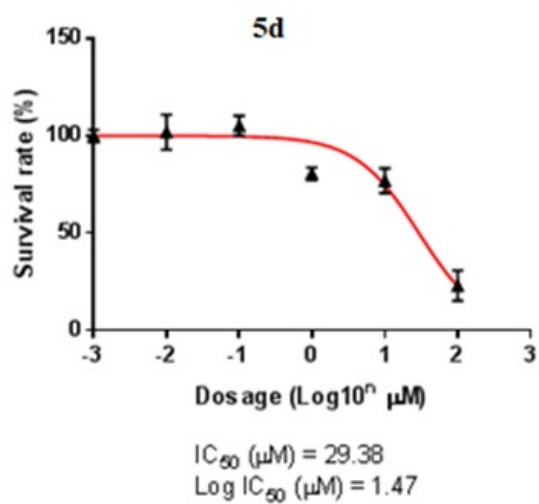
- Cell line: MCF7 (2000 cells/per well⁹⁶)
- Treated time: 72hrs
- Assay: MTT (90mins incubated)

Conc. (μM)	Viability	
	AVE.	\pm SD.
0	100.00	3.24
0.01	87.34	9.78
0.1	84.81	3.29
1	65.95	6.08
10	45.36	3.18
100	24.47	3.01



- Cell line: MCF7 (2000 cells/per well⁹⁶)
- Treated time: 72hrs
- Assay: MTT (90mins incubated)

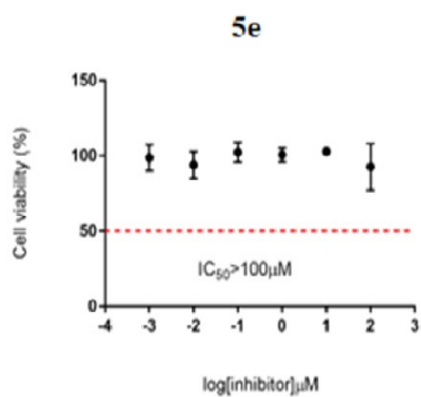
Conc. (μM)	Viability	
	AVE.	\pm SD.
0	100.00	3.24
0.01	104.74	2.95
0.1	94.25	8.87
1	89.71	9.39
10	62.88	4.10
100	17.74	0.85



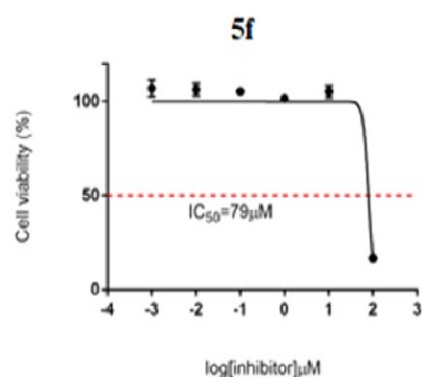
- Cell line: MCF7 (2000 cells/per well⁹⁶)
- Treated time: 72hrs
- Assay: MTT (90mins incubated)

Conc. (μM)	Viability	
	AVE.	\pm SD.
0	100.00	3.24
0.01	101.90	9.09
0.1	105.19	5.08
1	80.57	3.12
10	76.95	6.40
100	23.00	7.76

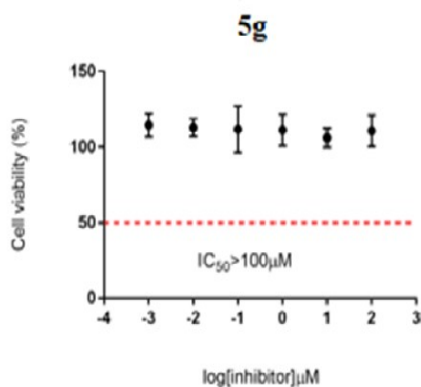
- Cell line: MCF7(2000cells/per well|96-well plate)
- Treated time: 72hrs
- Assay: alamarBlue(4hrs incubated) N=3



Conc.(μM)	Viability (%)	
	AVE.	\pm SD
0	100.0	8.7
0.01	94.1	8.9
0.1	102.5	6.5
1	100.7	4.6
10	103.0	2.3
100	92.9	15.5

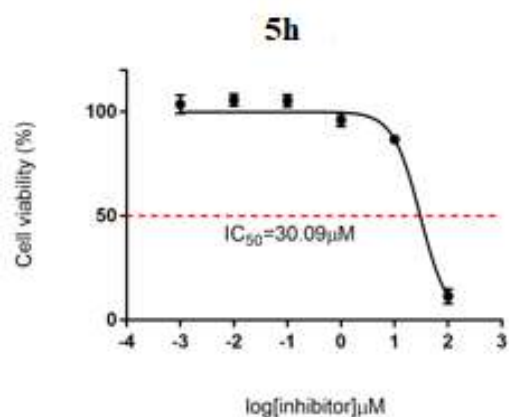


Conc.(μM)	Viability (%)	
	AVE.	\pm SD
0	100.0	4.3
0.01	106.3	3.3
0.1	105.4	2.3
1	101.6	2.3
10	105.2	3.2
100	16.7	2.0

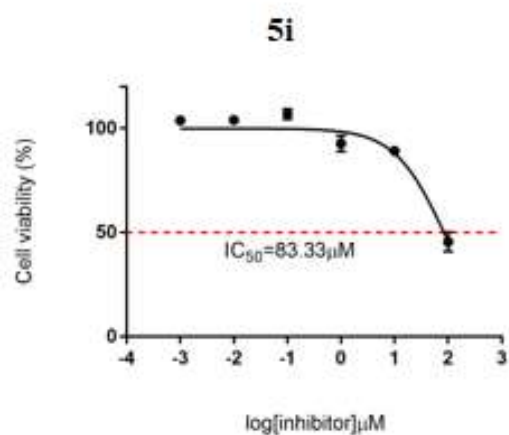


Conc.(μM)	Viability (%)	
	AVE.	\pm SD
0	100.0	7.7
0.01	113.0	5.8
0.1	111.8	15.3
1	111.4	10.4
10	106.2	6.4
100	110.8	10.4

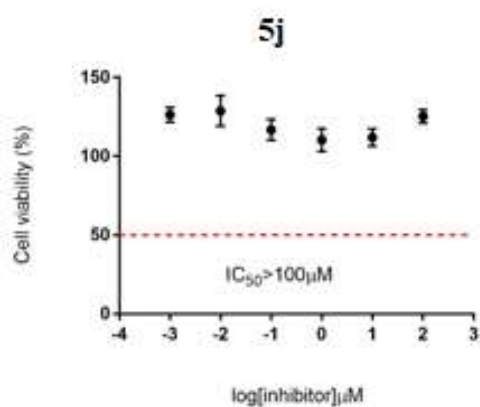
- Cell line: MCF7 (2000 cells/per well⁹⁸)
- Treated time: 72hrs
- Assay: MTT (4 hrs incubated)



Conc. (μM)	Viability (%)	
	AVE.	$\pm\text{SD}$
0	100.0	4.4
0.01	105.8	2.9
0.1	105.4	2.9
1	96.2	3.1
10	86.8	0.8
100	11.4	3.6

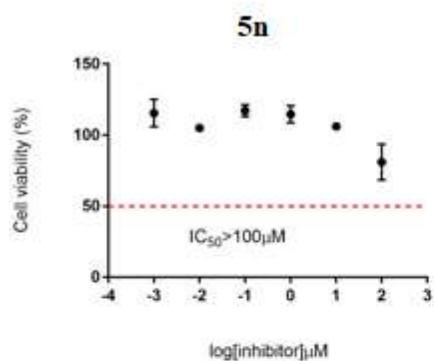


Conc. (μM)	Viability (%)	
	AVE.	$\pm\text{SD}$
0	100.0	1.4
0.01	104.0	1.2
0.1	106.9	2.4
1	92.7	3.8
10	89.2	2.2
100	45.5	4.8

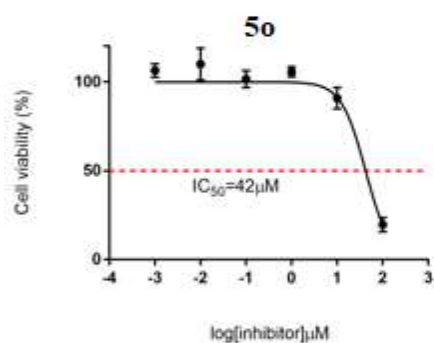


Conc. (μM)	Viability (%)	
	AVE.	$\pm\text{SD}$
0	100.0	4.8
0.01	128.8	9.7
0.1	116.8	6.7
1	110.3	7.3
10	111.9	5.6
100	125.3	4.3

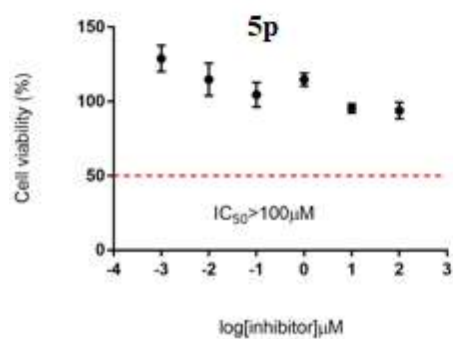
- Cell line: MCF7 (2000 cells/per well⁹⁸)
- Treated time: 72hrs
- Assay: MTT (4 hrs incubated)



Conc. (μM)	Viability (%)	
	AVE.	$\pm \text{SD}$
0	100.0	9.6
0.01	105.0	0.5
0.1	117.3	4.1
1	114.7	6.1
10	106.2	2.9
100	81.1	12.7



Conc. (μM)	Viability (%)	
	AVE.	$\pm \text{SD}$
0	100.0	3.7
0.01	110.1	8.9
0.1	101.6	4.8
1	105.7	2.8
10	90.8	6.1
100	19.7	4.0



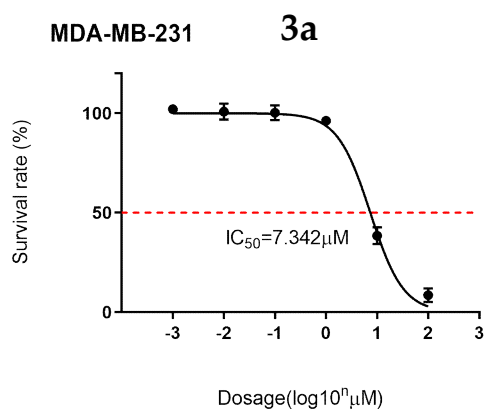
Conc. (μM)	Viability (%)	
	AVE.	$\pm \text{SD}$
0	100.0	8.8
0.01	114.8	10.9
0.1	104.6	8.3
1	114.7	4.3
10	95.4	3.0
100	93.9	5.5

IC₅₀ of **3a** against MDA-MB-231, BT-549, SUM159PT

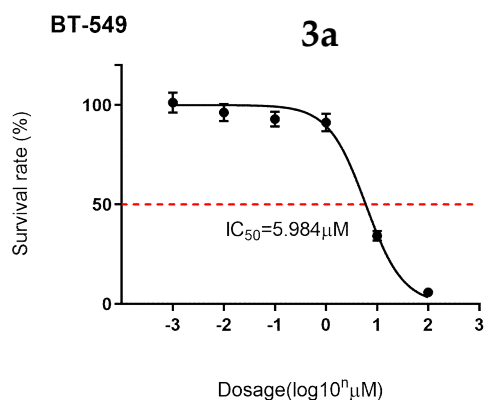
➤ Cell line: TNBC :MDAMB231;BT-549;SUM159PT (2000cells/per well96-well plate)

➤ Treated time: 72hrs

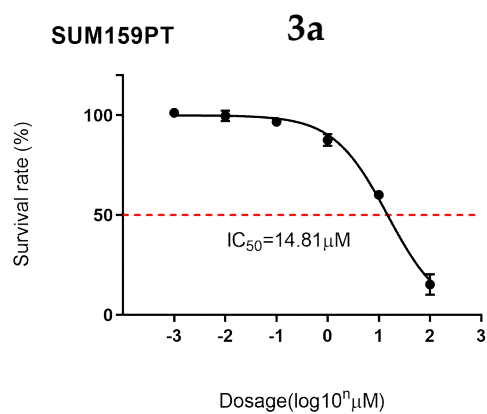
➤ Assay: alamarBlue (4hrs incubated)



Conc.(μM)	Viability	
	AVE.	±SD
0	100.0	1.1
0.01	100.8	4.1
0.1	100.3	3.8
1	96.3	1.1
10	38.4	4.2
100	8.6	3.4



Conc.(μM)	Viability	
	AVE.	±SD
0	100.0	5.0
0.01	96.3	4.3
0.1	92.9	3.7
1	91.3	4.4
10	34.2	2.5
100	5.8	2.2



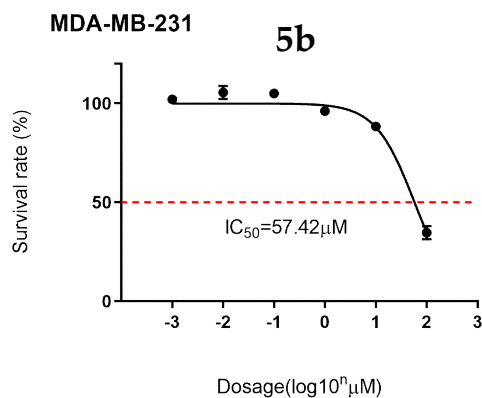
Conc.(μM)	Viability	
	AVE.	±SD
0	100.0	1.6
0.01	99.7	2.6
0.1	96.8	1.4
1	87.6	2.9
10	60.2	2.0
100	15.2	5.1

IC₅₀ of **5b** against MDA-MB-231, BT-549, SUM159PT

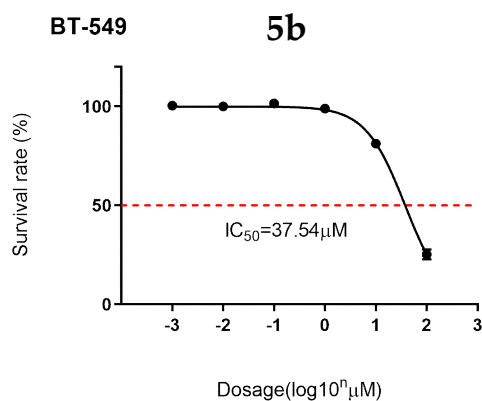
➤ Cell line: TNBC :MDAMB231;BT-549;SUM159PT (2000cells/per well96-well plate)

➤ Treated time: 72hrs

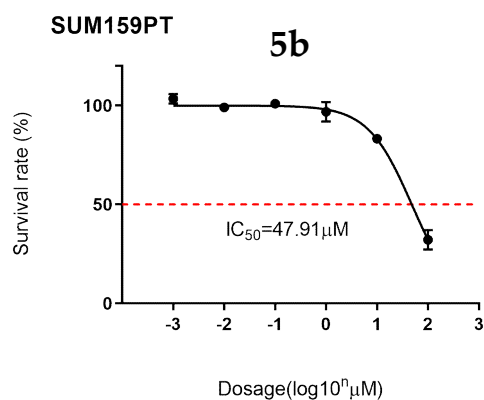
➤ Assay: alamarBlue (4hrs incubated)



Conc.(μM)	Viability	
	AVE.	±SD
0	100.0	1.8
0.01	105.6	3.3
0.1	105.1	1.3
1	96.1	0.7
10	88.3	1.2
100	34.7	3.3



Conc.(μM)	Viability	
	AVE.	±SD
0	100.0	0.4
0.01	100.0	1.0
0.1	101.6	1.7
1	98.9	1.2
10	81.2	1.6
100		2.6



Conc.(μM)	Viability	
	AVE.	±SD
0	100.0	2.5
0.01	99.0	2.2
0.1	101.0	1.4
1	96.9	4.9
10	83.2	2.4
100	32.2	4.9

- Cell line: MCF7 (100000cells/per 6cm dish)
- Treated time: 24hrs
- Assay: Western blot
- Antibody:

Phospho-NFKBp65(S536)	Cell Signaling 30333S
NFKBp65	Cell Signaling 8242S
β-ACTIN	Santa Cruzsc-47778

Protein Ladder: 4A biotech MPM9207

