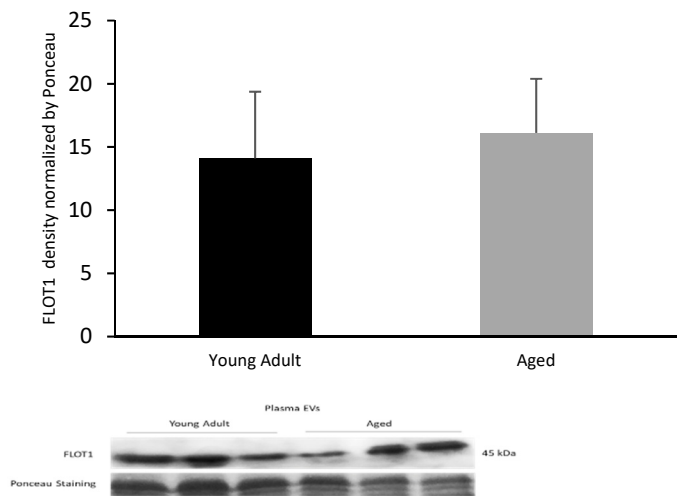
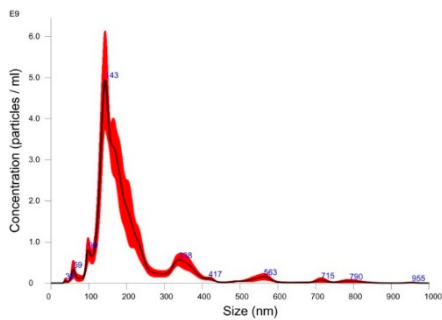


Supplementary Figure S1.

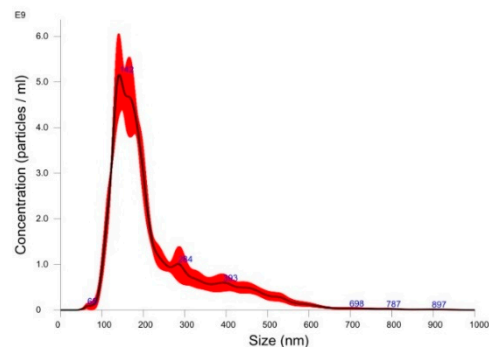
A.



B.



C.



D.

NTA characterization of extracellular vesicles		
	Mean Diameter (nm)	Concentration (particles/mL)
Young Adult	223.11 ± 28.62	1.07 × 10 ¹² ± 5.07 × 10 ¹¹
Aged	218.5 ± 23.37	1.36 × 10 ¹² ± 8.50 × 10 ¹¹

NTA data on EVs size distribution and concentration from Wistar rats, of 3- and 21-month-old. Student's t-test; $p < 0.05$ ($n = 9$ /group).

Supplementary Figure S1. (A) Effect of aging process on **FLOT1 content** in circulating extracellular vesicles from *Wistar* rats of 3- and 21-month-olds. The columns represent the mean ± SD. Representative images from

the gel of Western Blot experiments, showing 3 bands for each experimental group. Student's t-test; $p < 0.05$ (n=6). Representative data of **NTA analysis** showing size distribution profile and concentration of circulating EVs from **(B)** young-adult (3-month-old) and **(C)** aged (21-month-old) *Wistar* rats (n=9) **(D)**. NTA data on EVP size distribution and concentration from *Wistar* rats of 3- and 21-month-olds. Student's t-test; $p < 0.05$ (n=9/group).