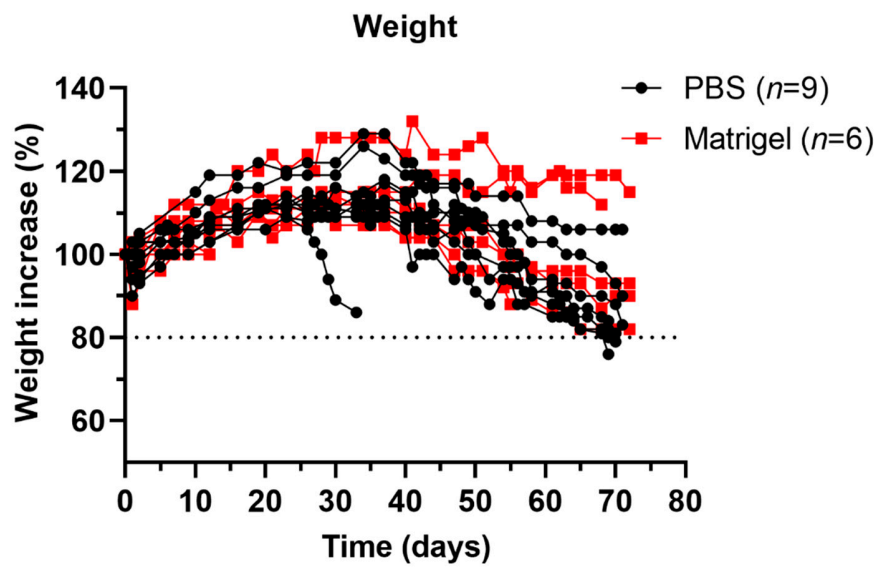
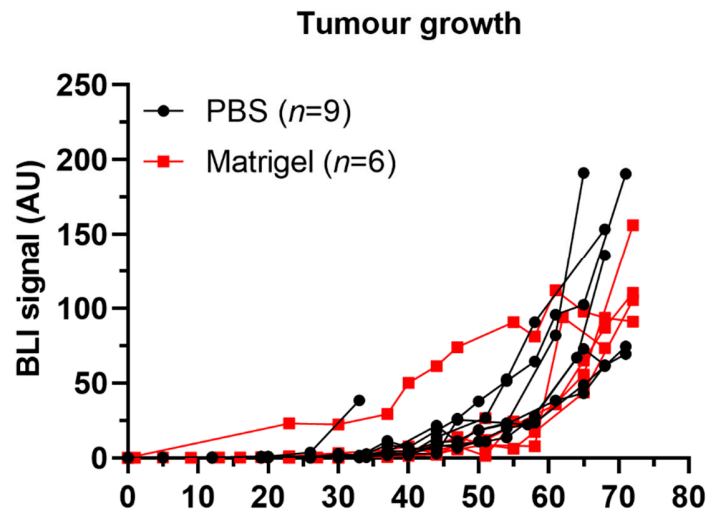


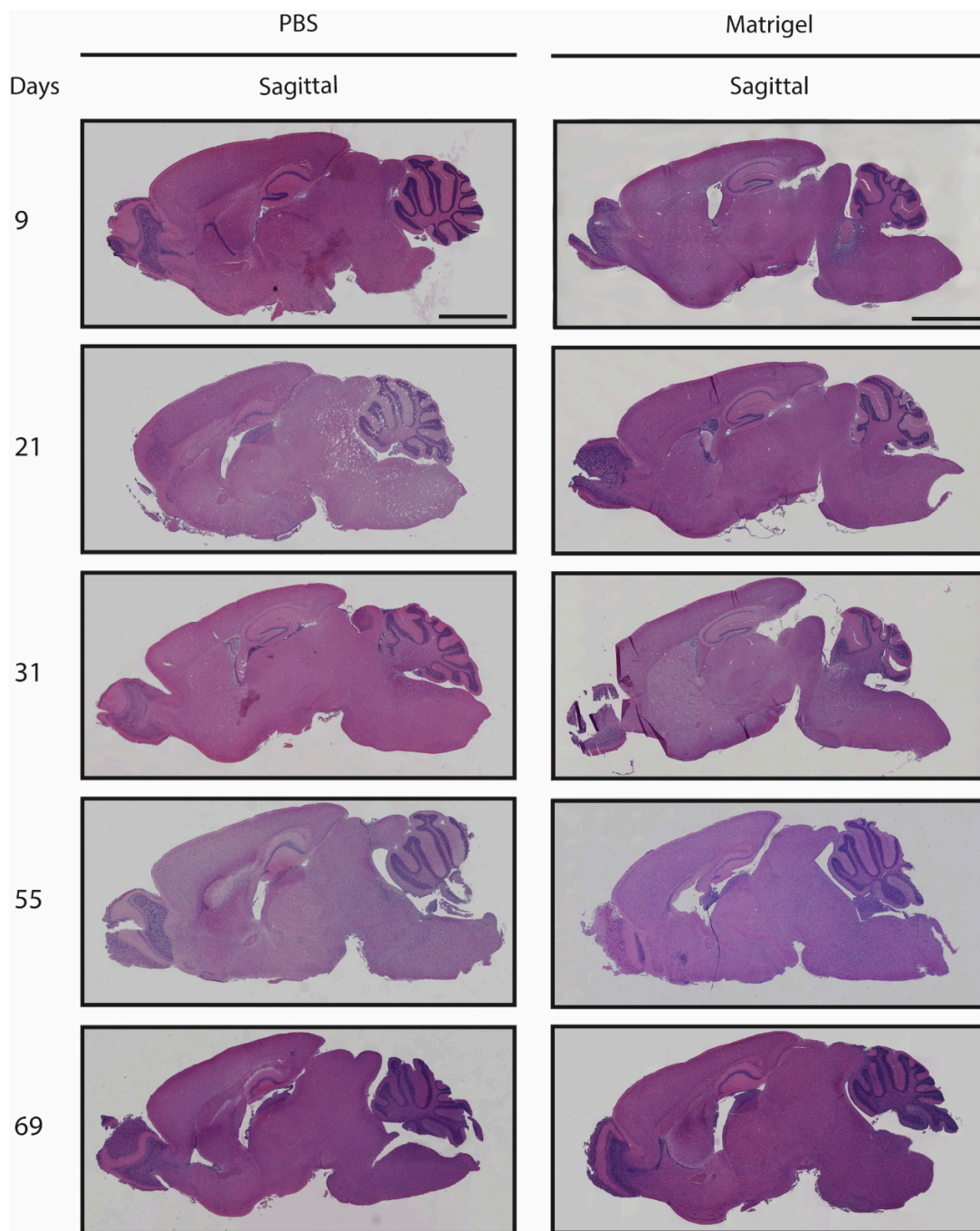
Supplementary Figures



Supplementary Figure S1: Weight profiles of individual mice after inoculation with HSJD-DIPG-007 cells suspended in PBS or Matrigel. Weight was monitored until terminal endpoint. Dotted line represents humane endpoint threshold (representing 20% weight loss).



Supplementary Figure S2: Tumour growth profiles of individual mice following inoculation with HSJD-DIPG-007 cells suspended in PBS or Matrigel. Individual tumour volume over time in both PBS and Matrigel suspension groups shows comparable tumour growth up to 75 days.



Supplementary Figure S3: Haematoxylin & Eosin staining of mouse brains with tumour progression over time following inoculation with HSJD-DIPG-007 cells suspended in PBS or Matrigel. No apparent histological changes were observed over time. Scale bar = 2mm.