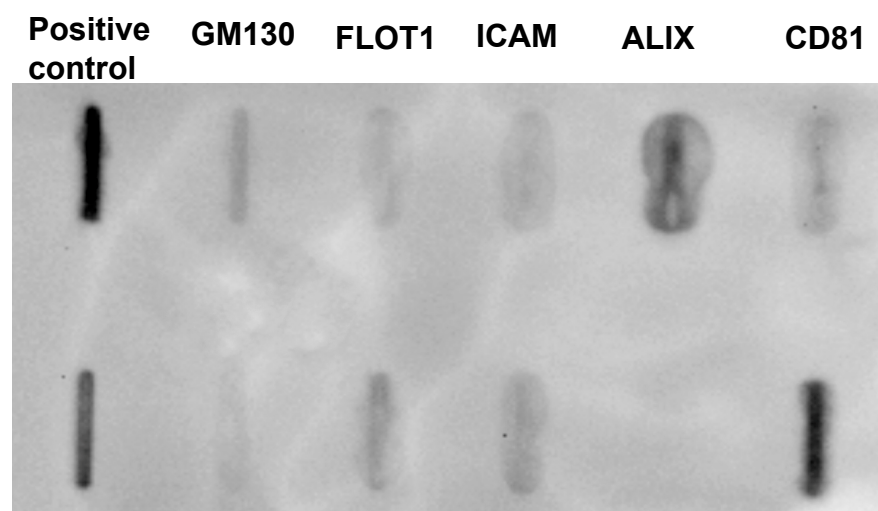
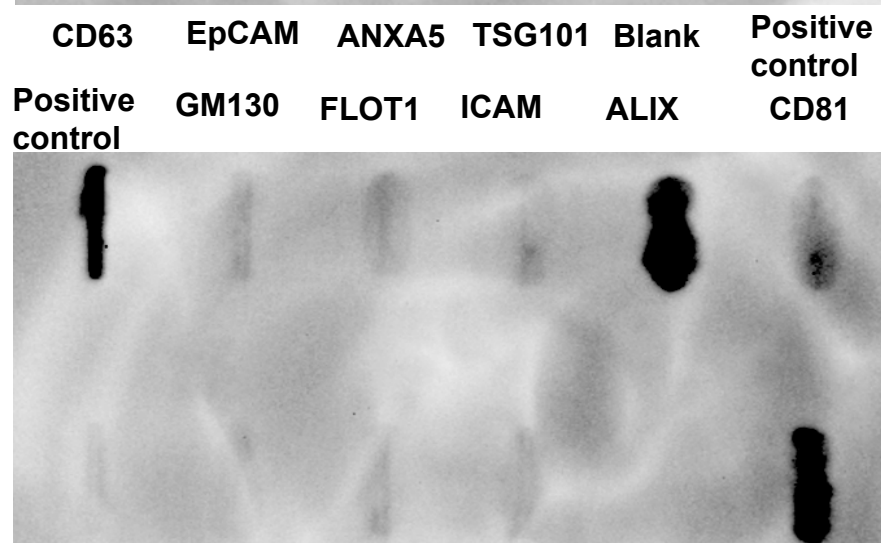


MCF10A



MCF7



MDA-MB-231

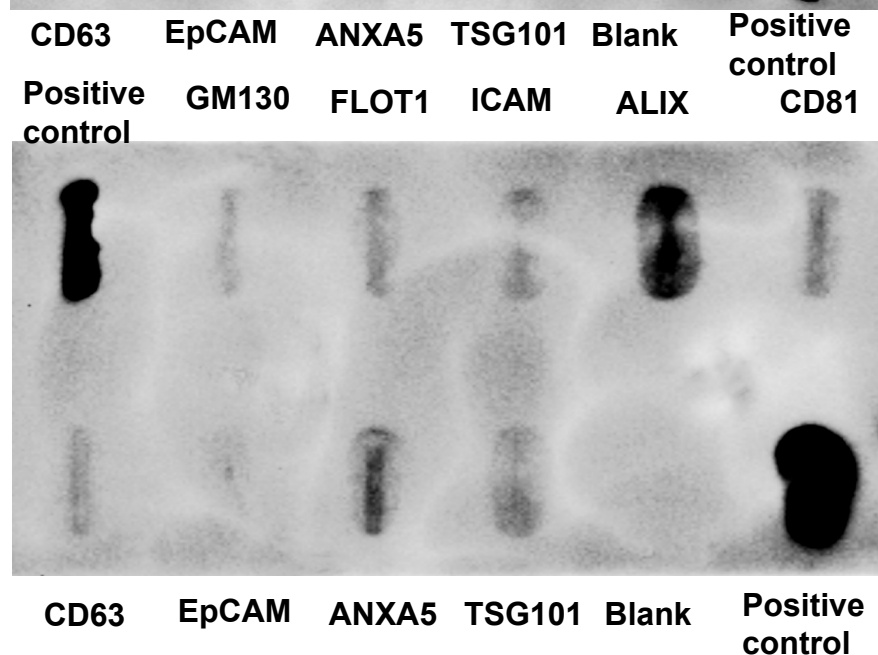


Figure S1: Exo-Check exosome antibody array analysis for expression of five external (CD63, EpCAM, ANXA5, CD81, and ICAM) and three internal (TSG101, ALIX, and FLOT1) EV protein exosomal (or sEV) markers isolated from MCF10A, MCF7 and MDA-MB-231 cells. GM130 cis-Golgi marker is used to monitor any cellular contamination in sEV isolations, a labeled positive control for HRP detection, and a blank spot as a background control.

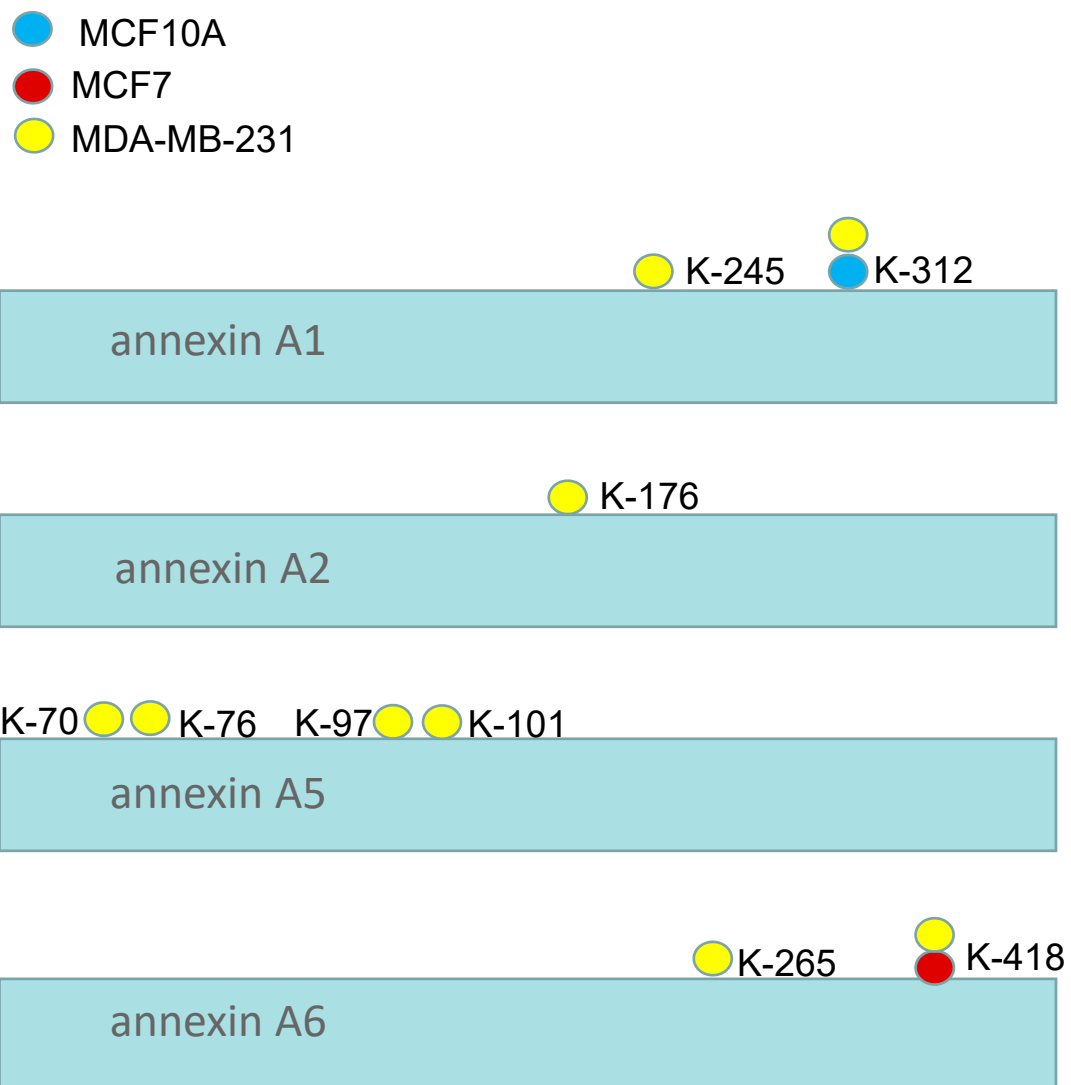


Figure S2: The position of annexin acetylation sites from MCF10A, MCF7 and MDA-MB-231 marked with blue, red and yellow, respectively.

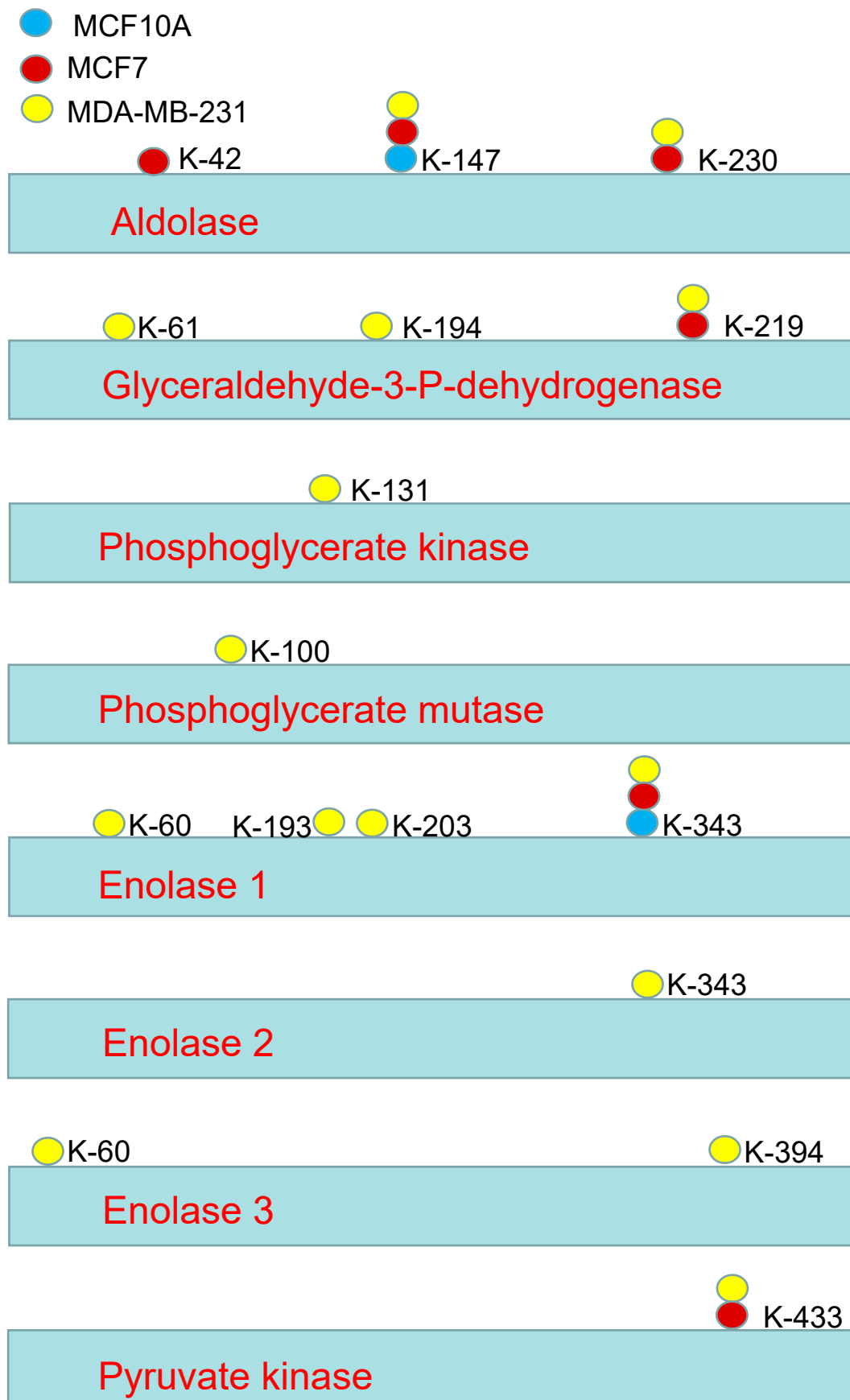


Figure S3: The position of acetylated sites of enzymes in the glycolysis pathway from MCF10A, MCF7 and MDA-MB-231, respectively.