

Full search strategy

PubMed

("OSAS"[All Fields] OR "OSA"[All Fields] OR "obstructive sleep apnea syndrome"[All Fields]) AND ("complete blood count"[All Fields] OR "CBC"[All Fields] OR "full blood count"[All Fields] OR "FBC"[All Fields] OR "mean platelet volume"[All Fields] OR "MPV"[All Fields] OR "platelet distribution width"[All Fields] OR "PDW"[All Fields])

Web of Science

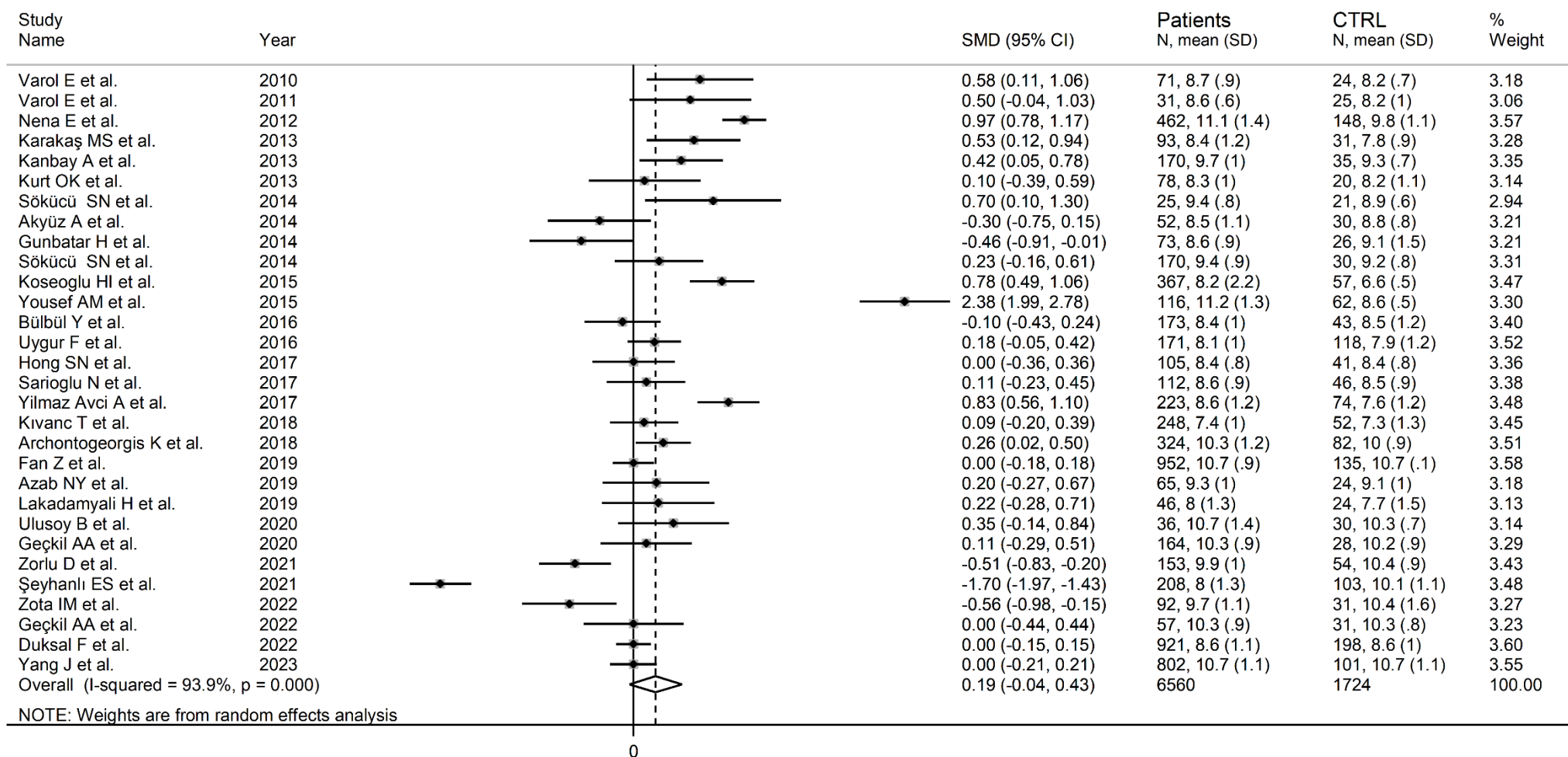
("OSAS" OR "OSA" OR "obstructive sleep apnea syndrome") AND ("complete blood count" OR "CBC" OR "full blood count" OR "FBC" OR "mean platelet volume" OR "MPV" OR "platelet distribution width" OR "PDW") (All Fields)

Scopus

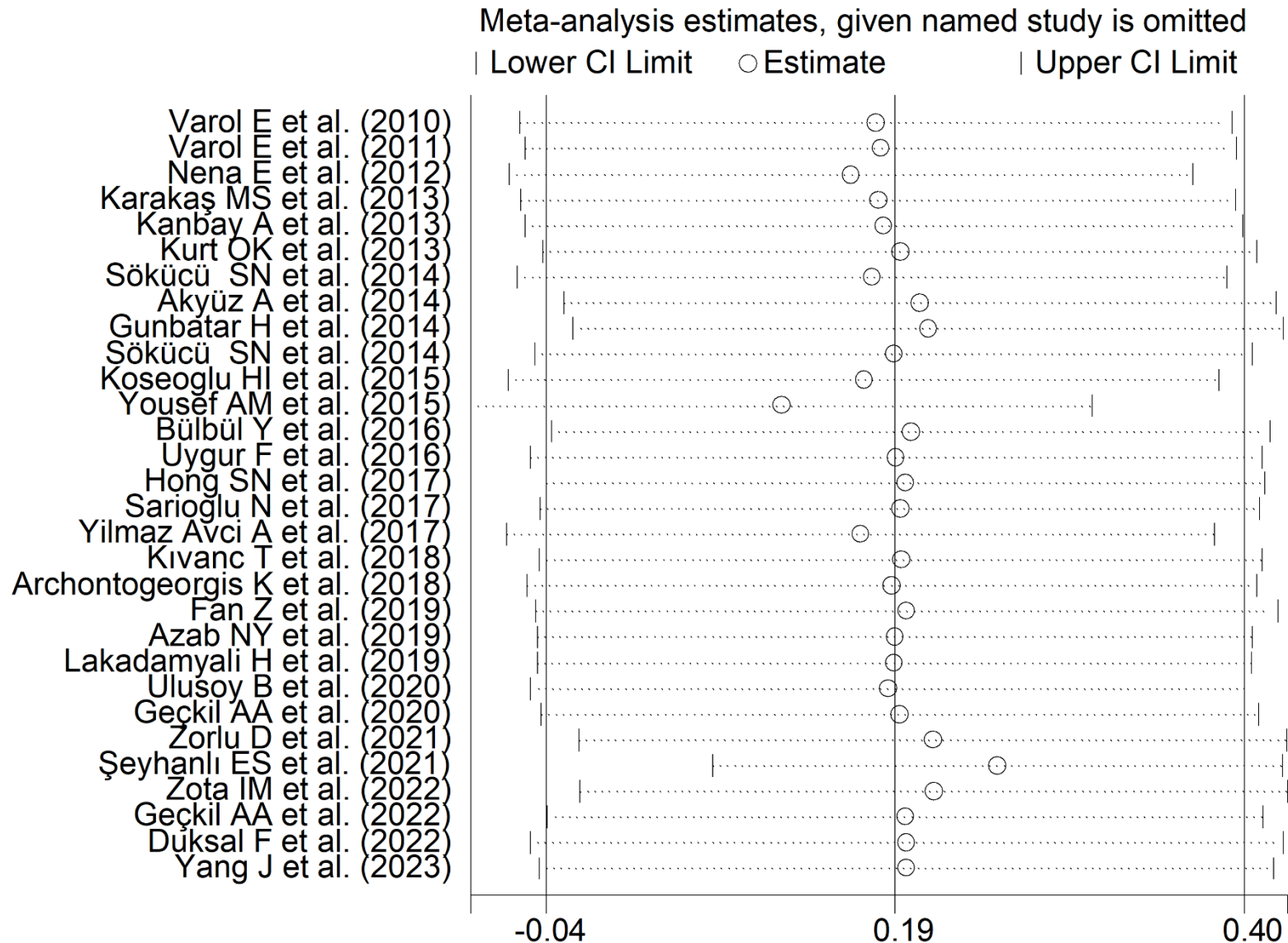
TITLE-ABS-KEY (("OSAS" OR "OSA" OR "obstructive sleep apnea syndrome") AND ("complete blood count" OR "CBC" OR "full blood count" OR "FBC" OR "mean platelet volume" OR "MPV" OR "platelet distribution width" OR "PDW"))

Suppl. Table S1. The Joanna Briggs Institute critical appraisal checklist for the included studies.

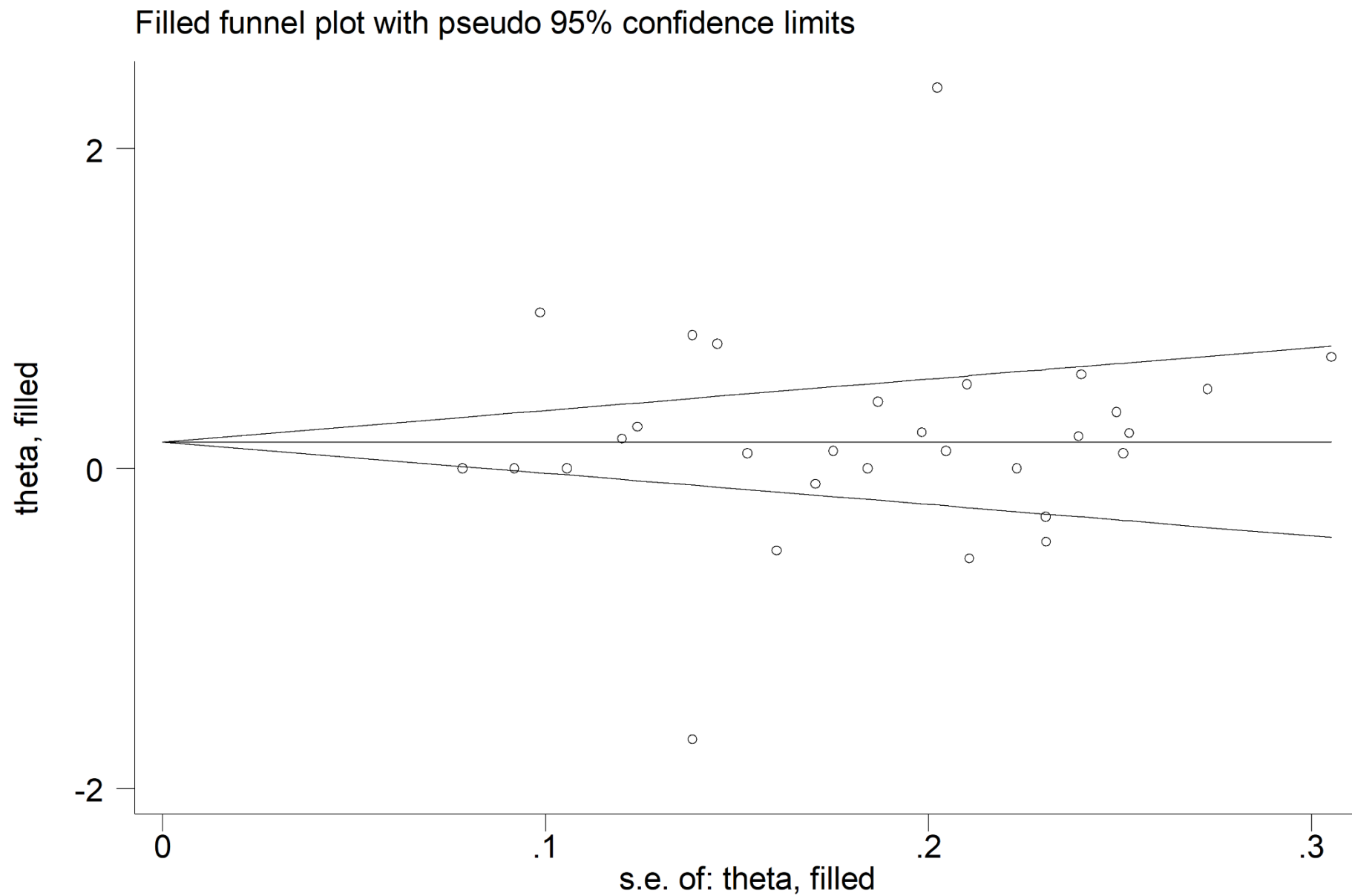
[illegible]



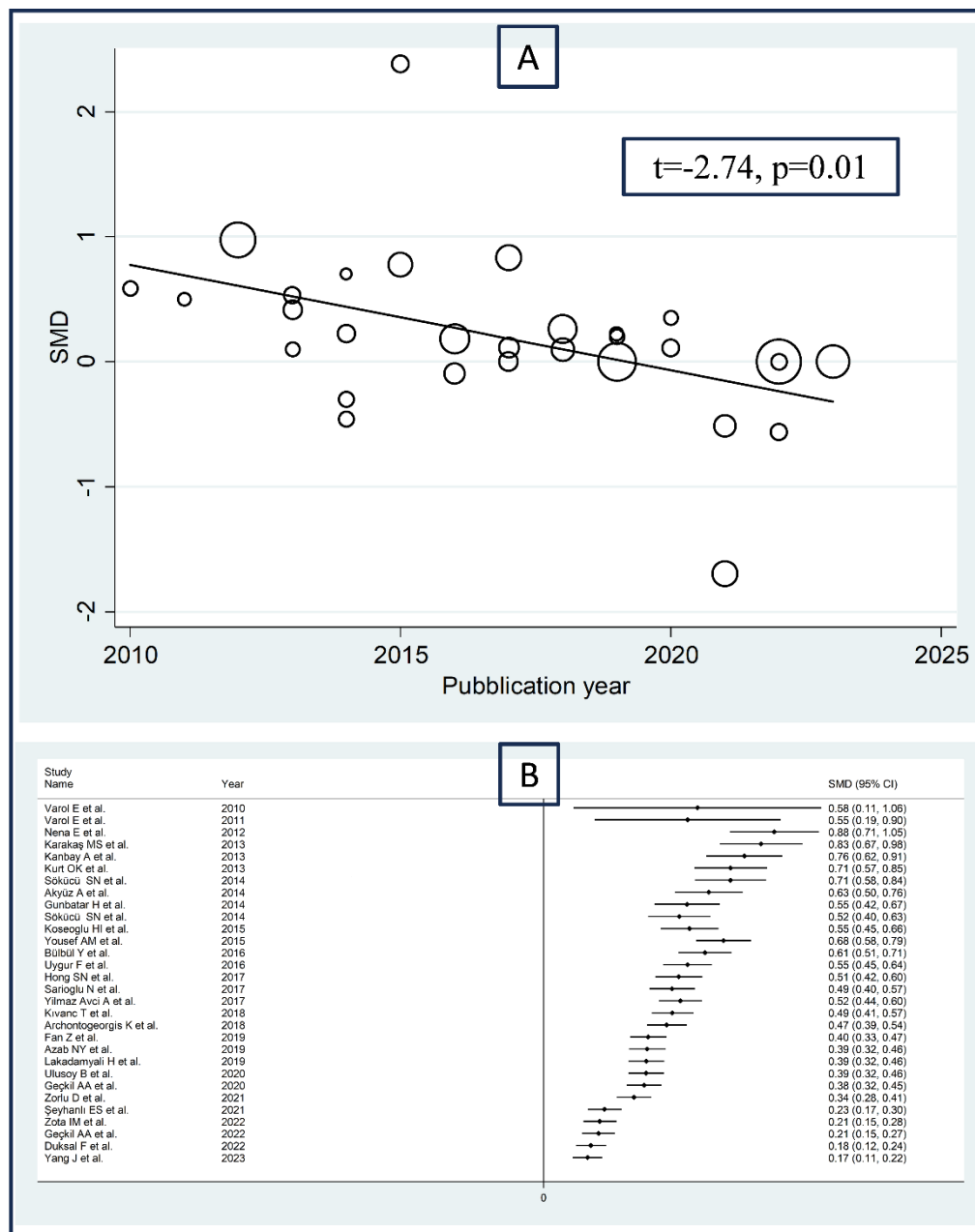
Suppl. Figure S1. Forest plot of studies examining MPV values of OSAS patients and controls.



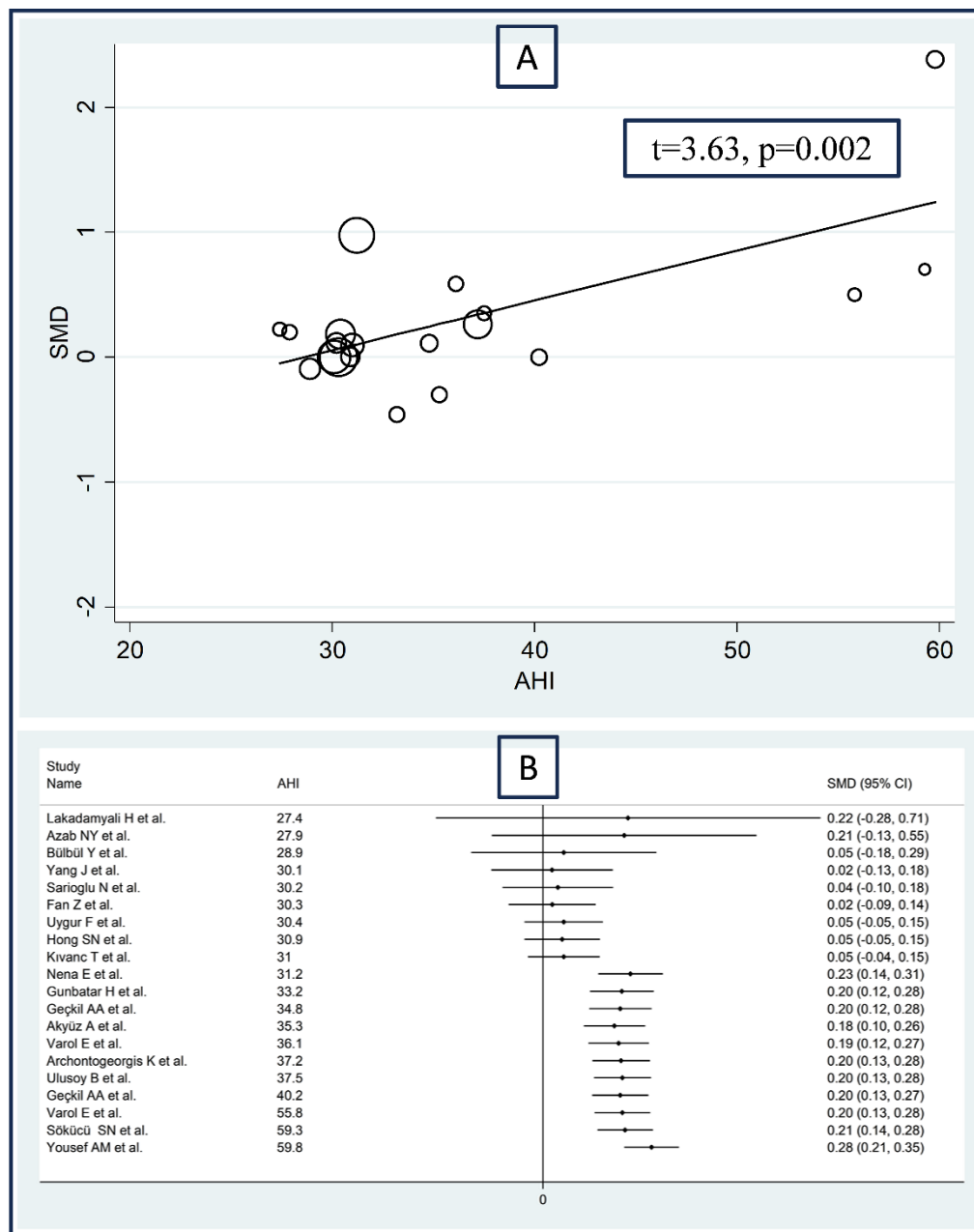
Suppl. Figure S2. Sensitivity analysis of the association between MPV values and OSAS. For each study, the displayed effect size (hollow circles) corresponds to an overall effect size computed from a meta-analysis excluding that study.



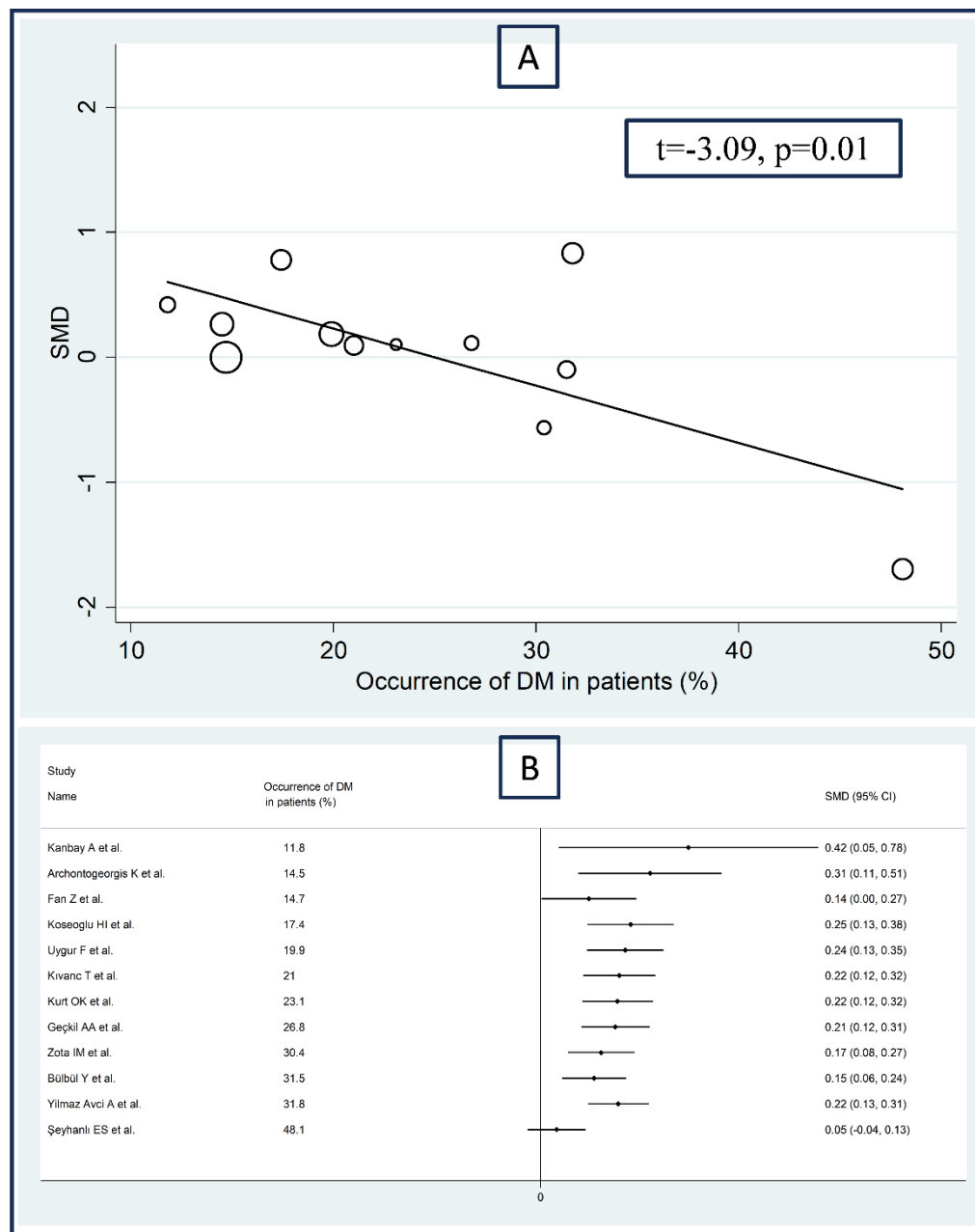
Suppl. Figure S3. Funnel plot of studies investigating association between MPV values and OSAS after trimming and filling. Dummy studies and genuine studies are represented by enclosed circles and free circles, respectively.



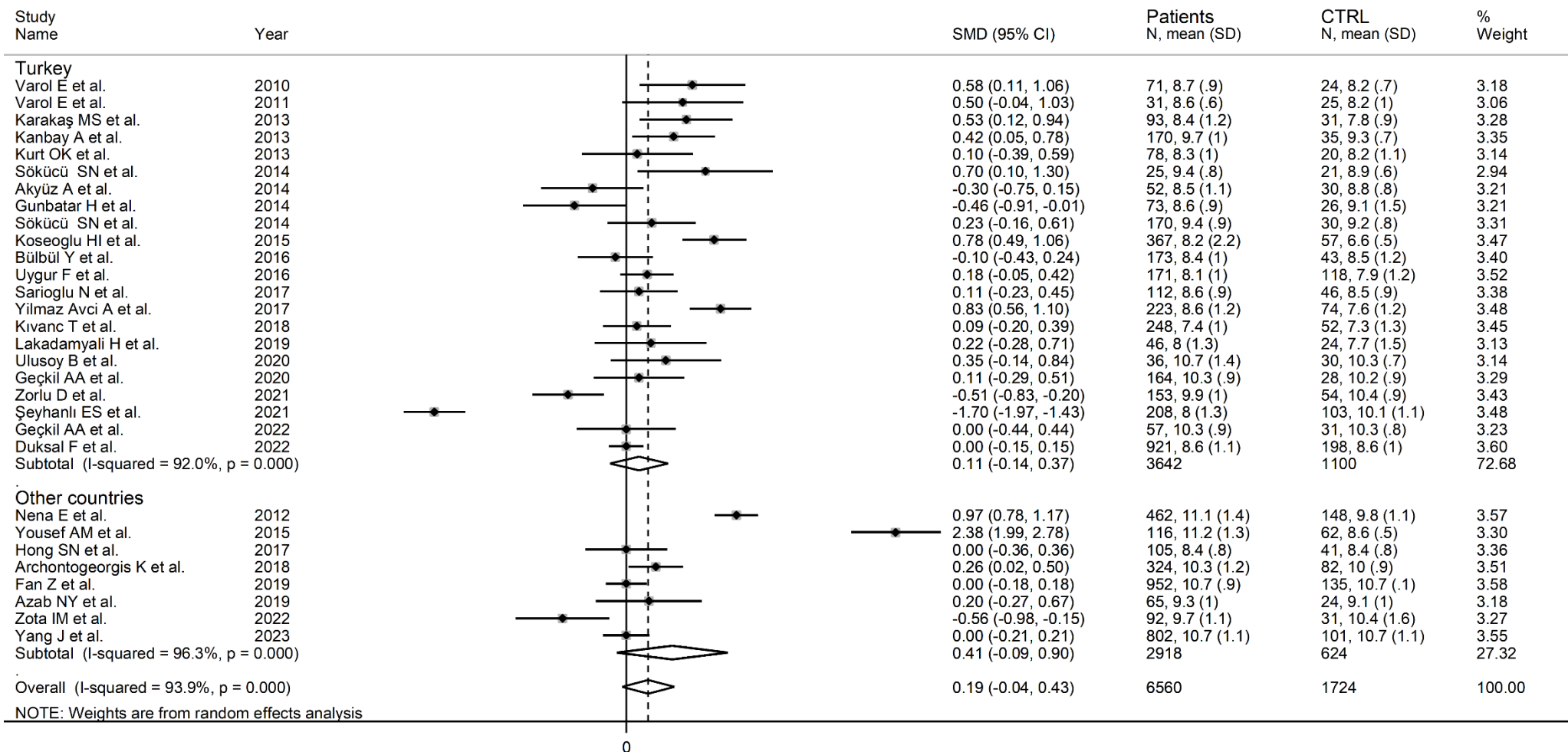
Suppl. Figure S4. Bubble plot reporting univariate meta-regression analysis between effect size and publication year (A) and cumulative meta-analysis of MPV values based on publication year (B).



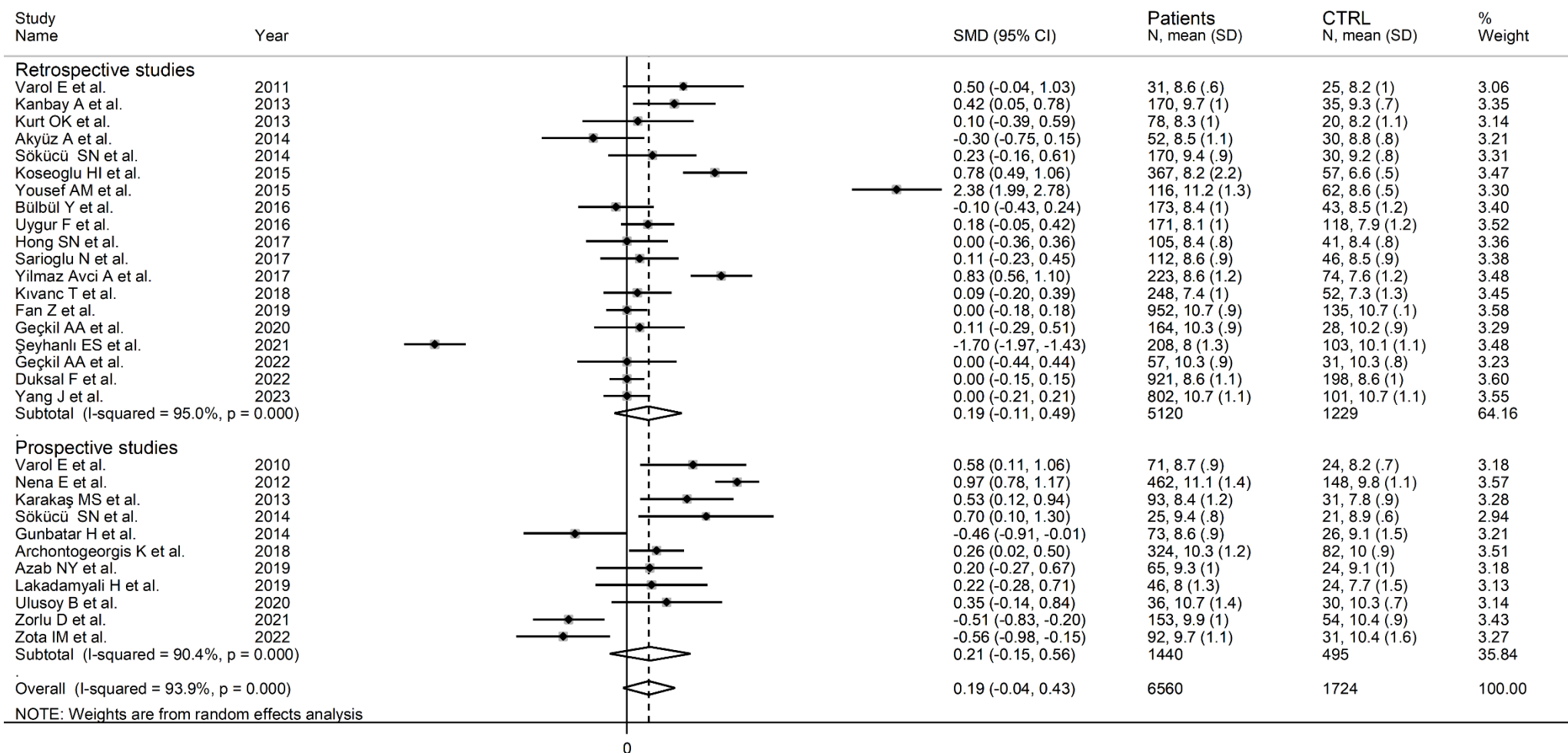
Suppl. Figure S5. Bubble plot reporting univariate meta-regression analysis between effect size and AHI (A) and cumulative meta-analysis of MPV values based on AHI (B).



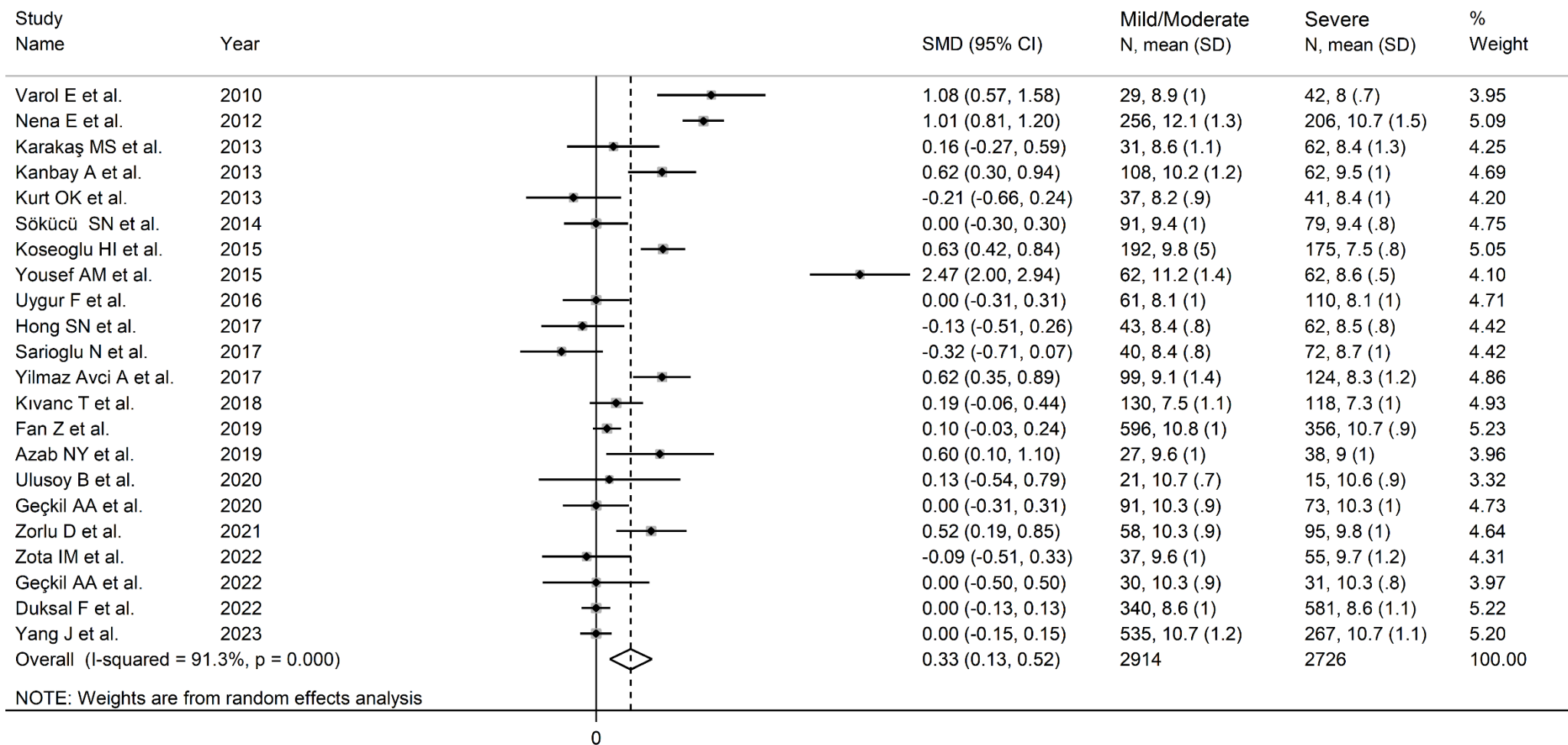
Suppl. Figure S6. Bubble plot reporting univariate meta-regression analysis between effect size and occurrence of DM in patients (A) and cumulative meta-analysis of MPV values based on occurrence of DM in patients (B).



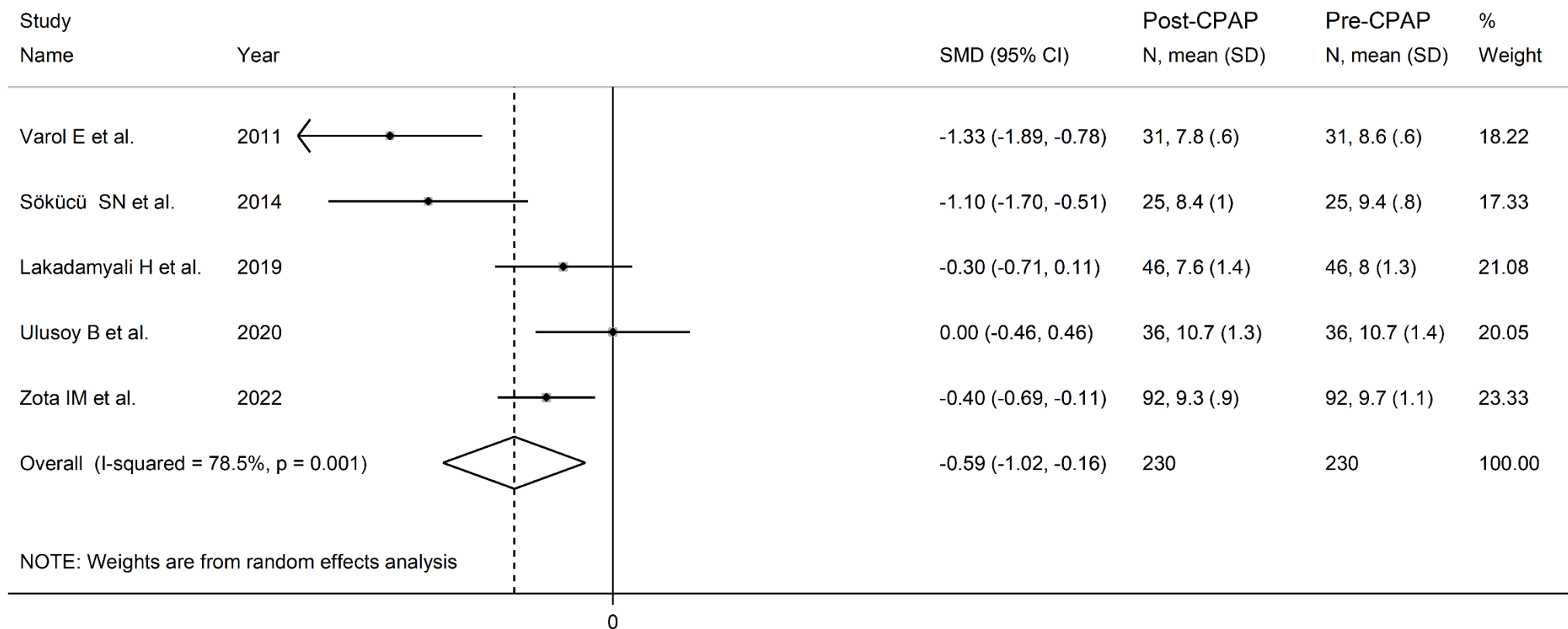
Suppl. Figure S7. Forest plot of studies examining MPV values of OSAS patients and controls according to country.



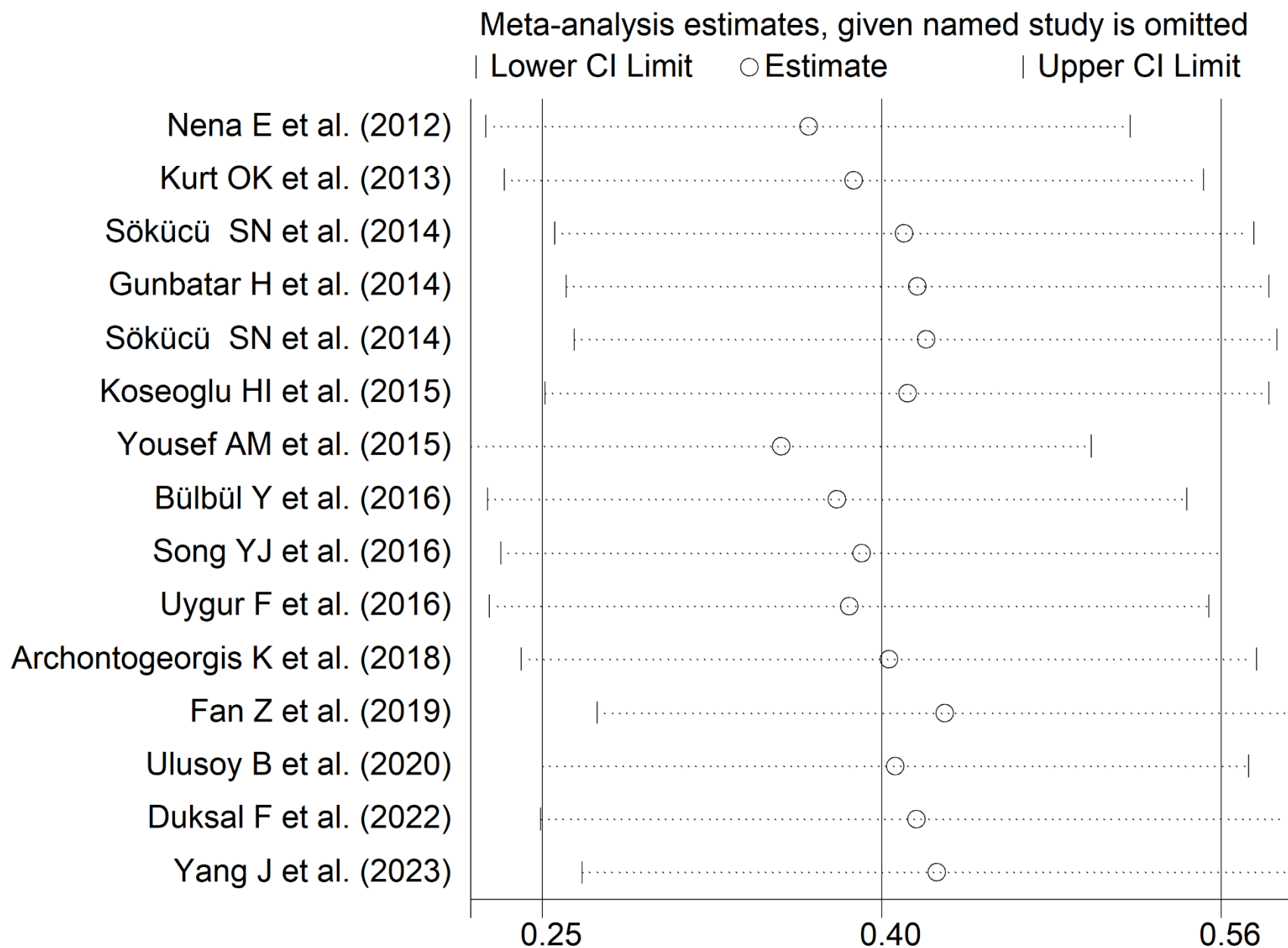
Suppl. Figure S8. Forest plot of studies examining MPV values of OSAS patients and controls according to study design.



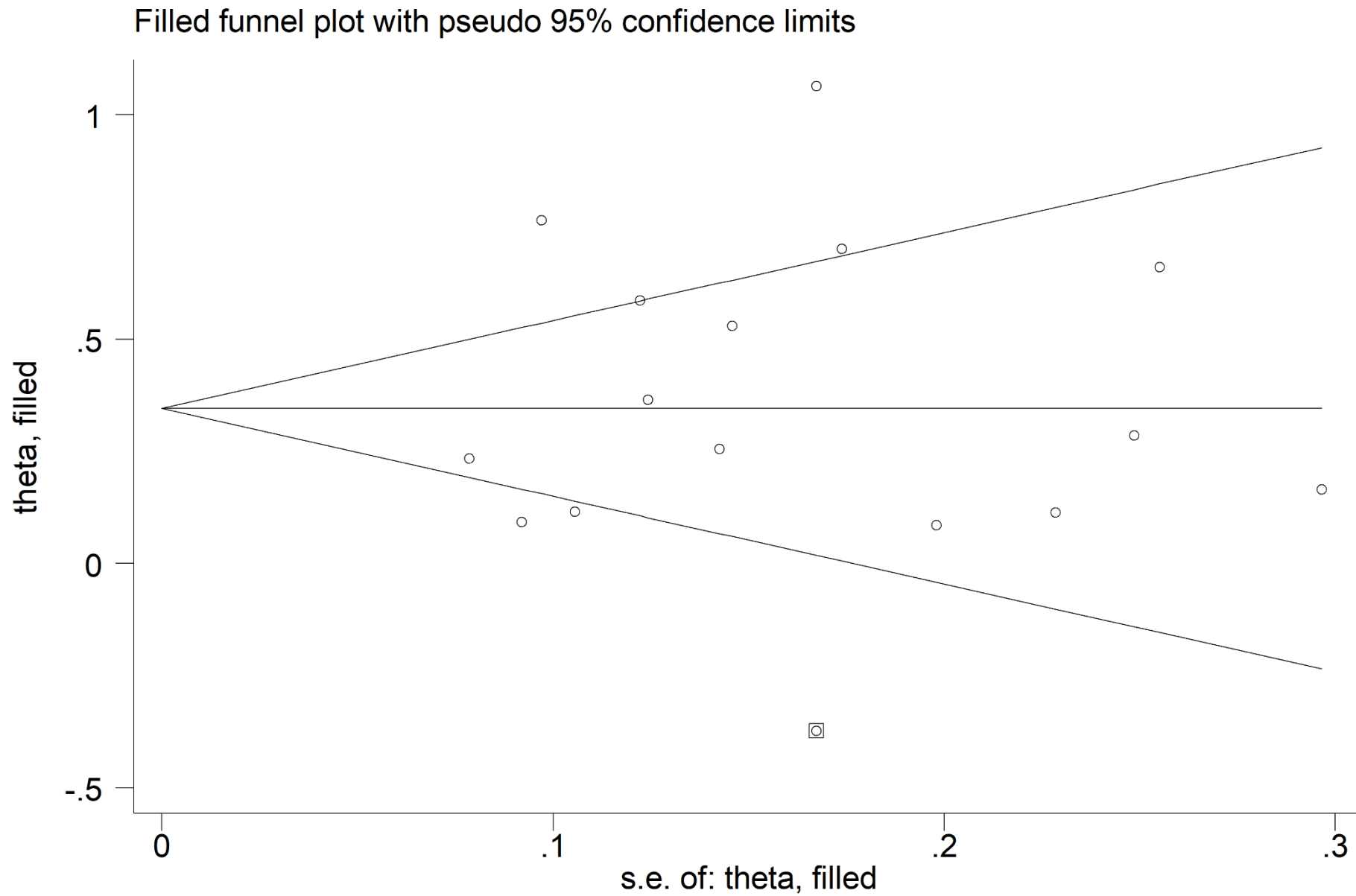
Suppl. Figure S9. Forest plot of studies examining MPV values of mild/moderate vs. severe OSAS patients.



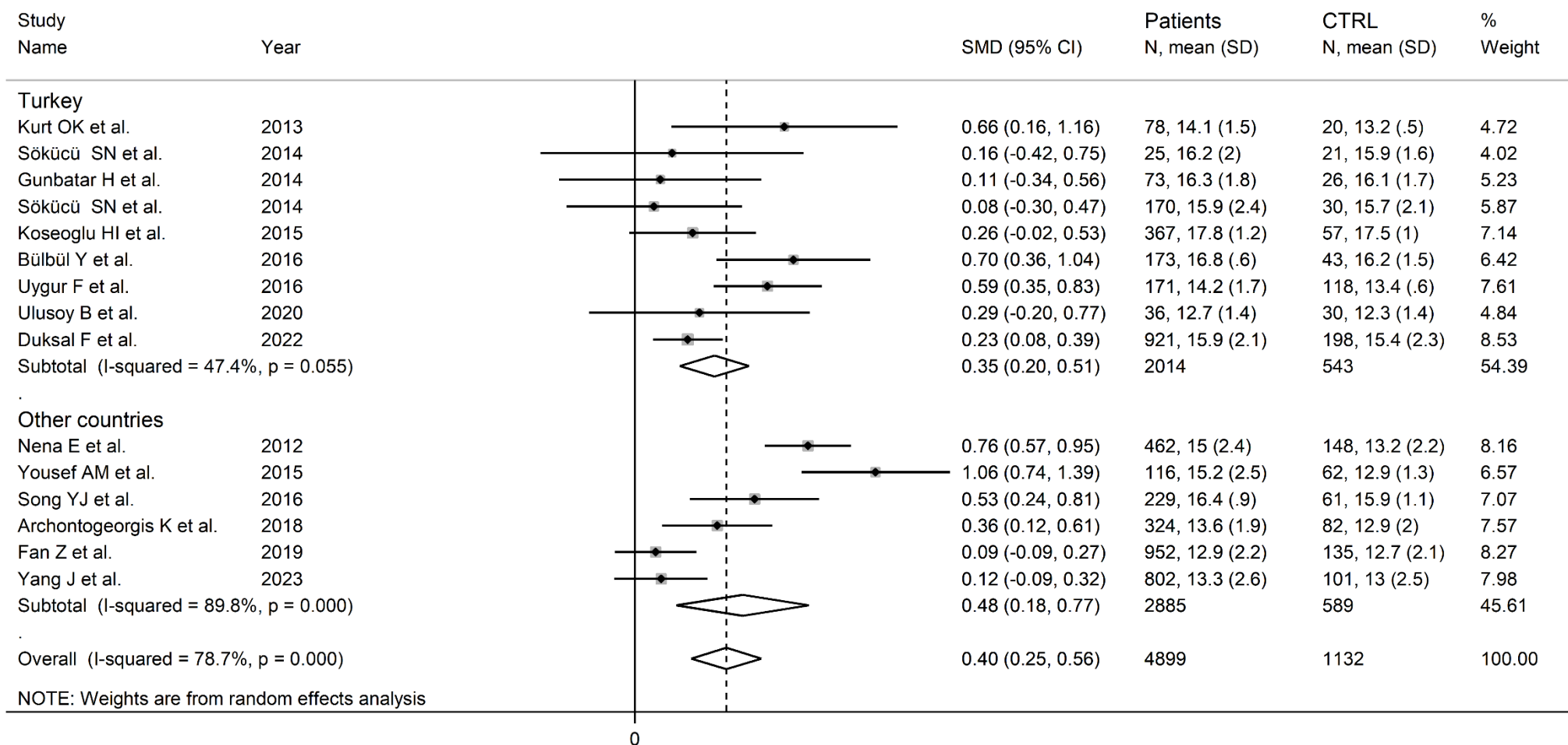
Suppl. Figure S10. Forest plot of studies examining MPV values of pre- and post-CPAP treatment patients.



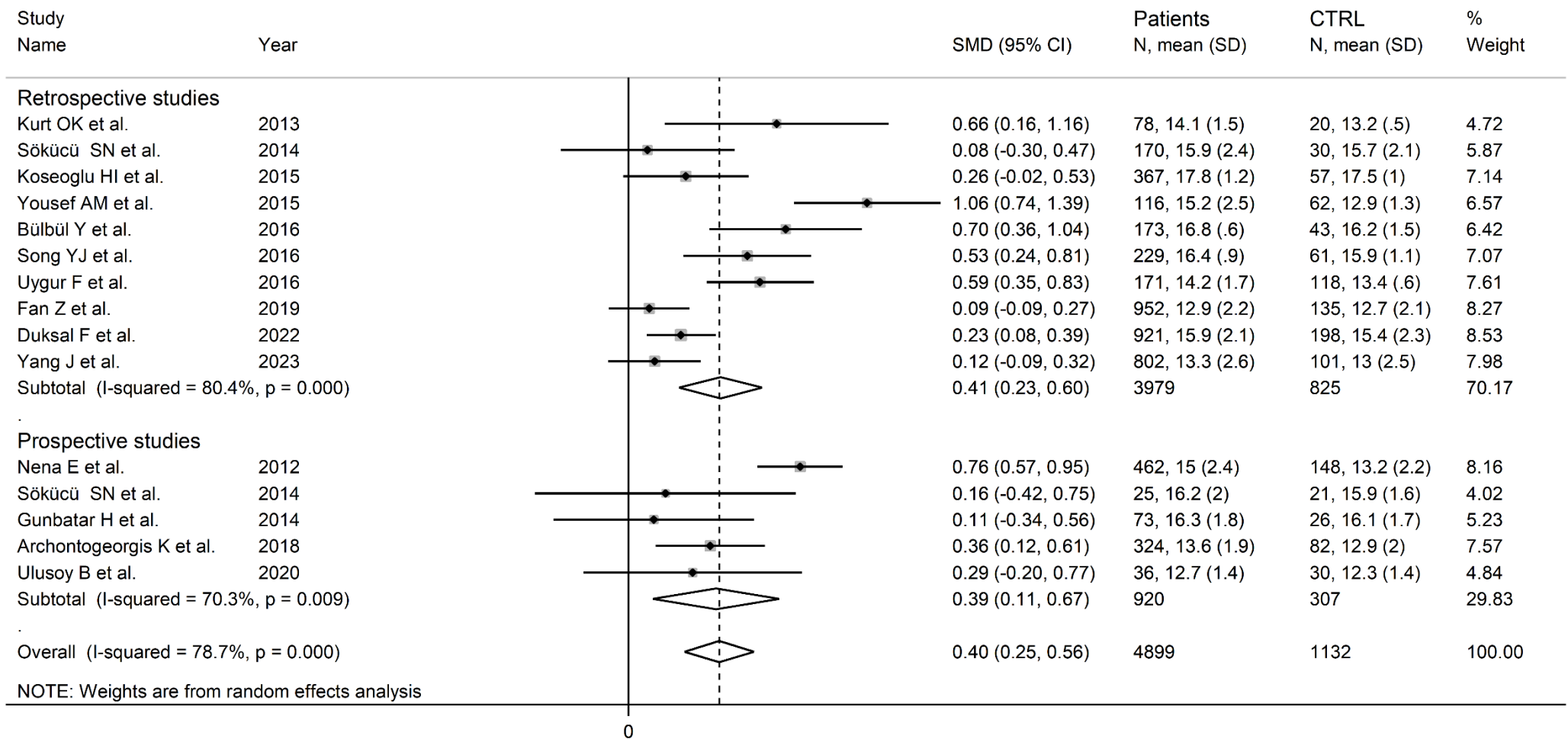
Suppl. Figure S11. Sensitivity analysis of the association between PDW values and OSAS. For each study, the displayed effect size (hollow circles) corresponds to an overall effect size computed from a meta-analysis excluding that study.



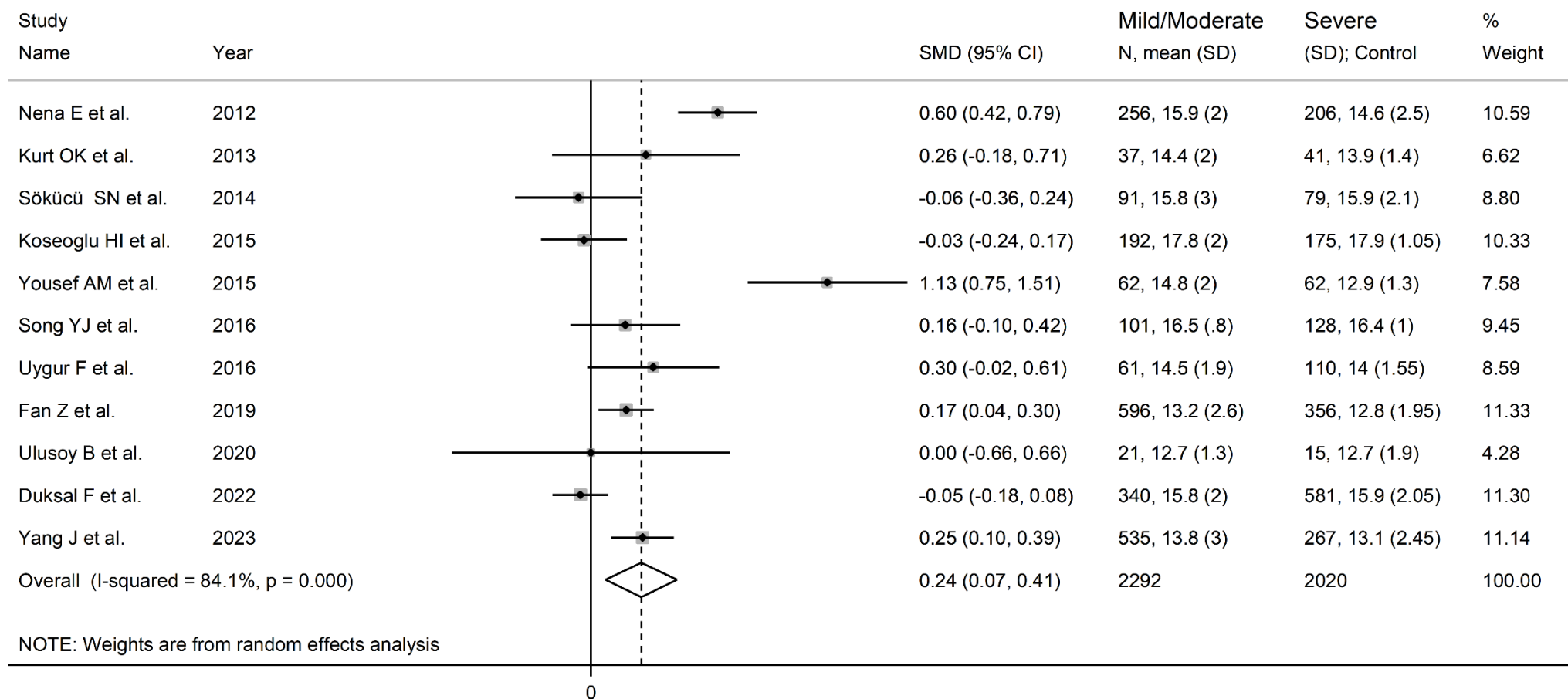
Suppl. Figure S12. Funnel plot of studies investigating association between PDW values and OSAS after trimming and filling. Dummy studies and genuine studies are represented by enclosed circles and free circles, respectively.



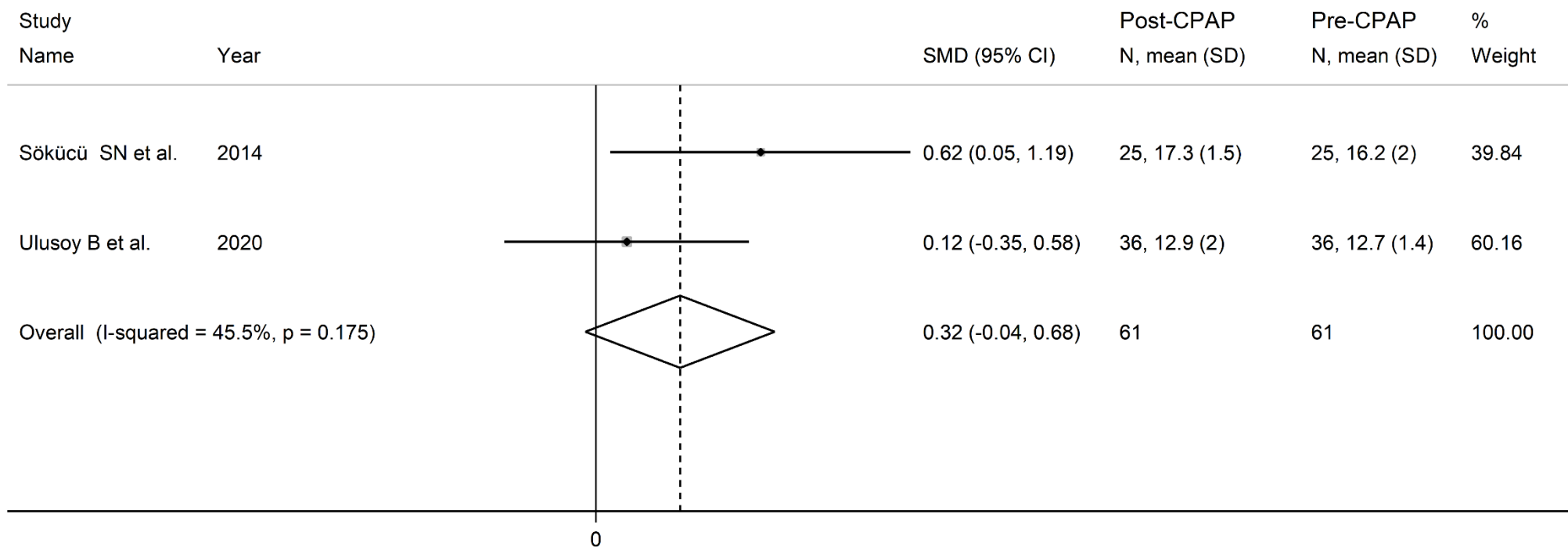
Suppl. Figure S13. Forest plot of studies examining PDW values of OSAS patients and controls according to country.



Suppl. Figure S14. Forest plot of studies examining PDW values of OSAS patients and controls according to study design.



Suppl. Figure S15. Forest plot of studies examining PDW values of mild/moderate vs. severe OSAS patients.



Suppl. Figure S16. Forest plot of studies examining PDW values of patients pre- and post-treatment with CPAP.