

# Apple Pomace-Derived Cationic Cellulose Nanocrystals for PFAS Removal from Contaminated Water

Luis A. Franco <sup>1,†</sup>, T. Dwyer Stuart <sup>1,†</sup>, Md Shahadat Hossain <sup>1</sup>, Bandaru V. Ramarao <sup>1</sup>, Charlene C. VanLeuven <sup>2</sup>, Mario Wriedt <sup>3</sup>, Michael Satchwell <sup>4</sup> and Deepak Kumar <sup>1,\*</sup>

<sup>1</sup> Department of Chemical Engineering, SUNY College of Environmental Science and Forestry, Syracuse, NY 13210, USA

<sup>2</sup> Department of Chemistry & Biomolecular Science, Clarkson University, Potsdam, NY 13699, USA

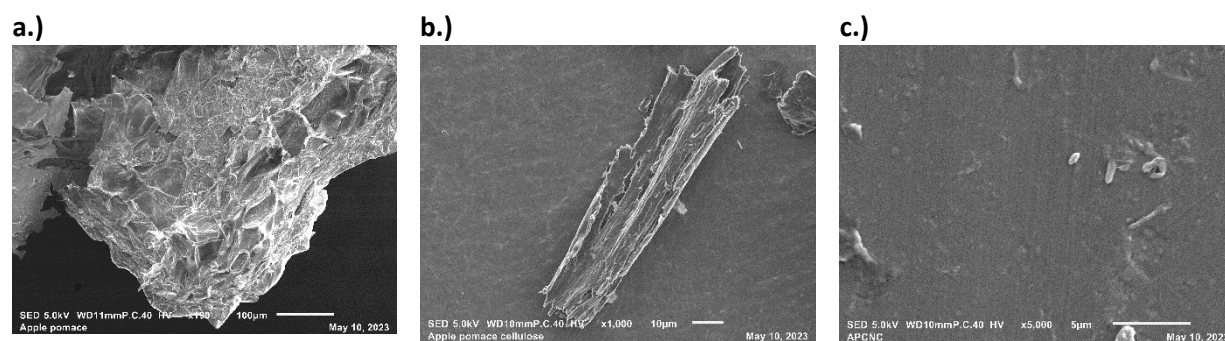
<sup>3</sup> Department of Chemistry and Biochemistry, University of Texas at Dallas, Richardson, TX 75080, USA

<sup>4</sup> Analytical and Technical Services, SUNY College of Environmental Science and Forestry, Syracuse, NY 13210, USA

\* Correspondence: dkumar02@esf.edu; Tel.: +1-(315)-470-6503

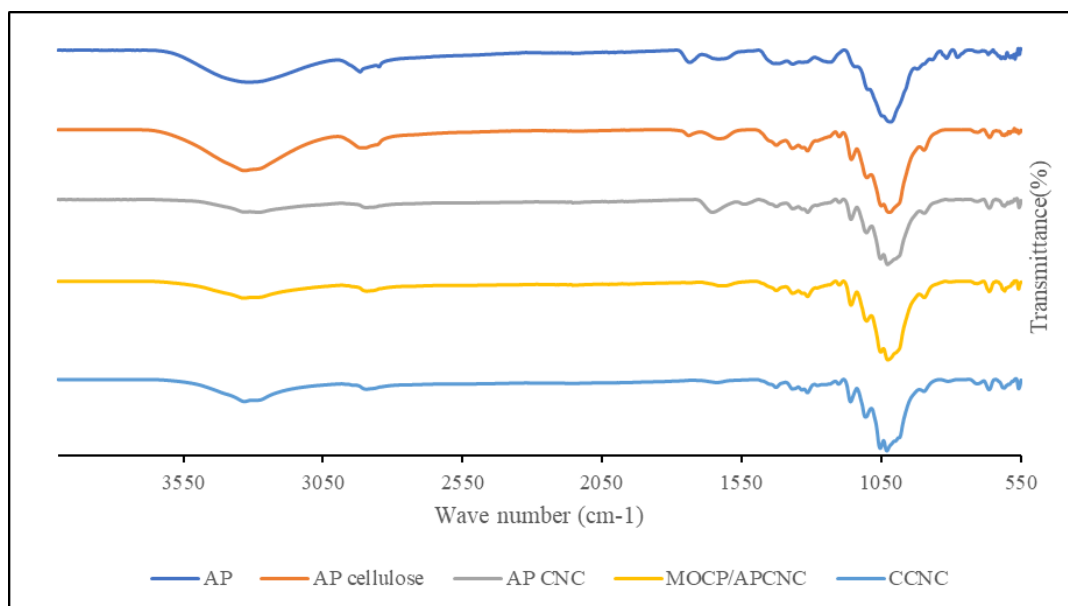
† These authors contributed equally to this work.

**Supplementary Information S1.** Scanning electron microscopy (SEM) analysis



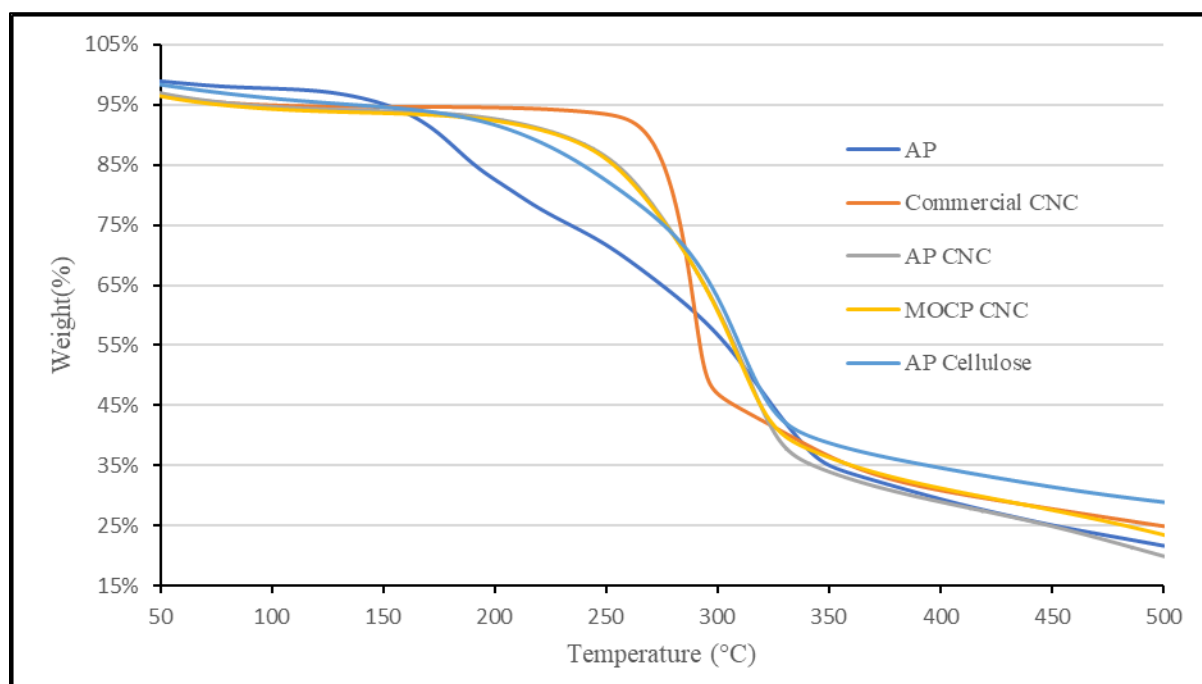
**Figure S1.** SEM images of a.) AP, b.) AP-cellulose, and c.) APCNC.

**Supplementary Information S2.** Fourier-Transform infrared spectroscopy (FTIR) analysis



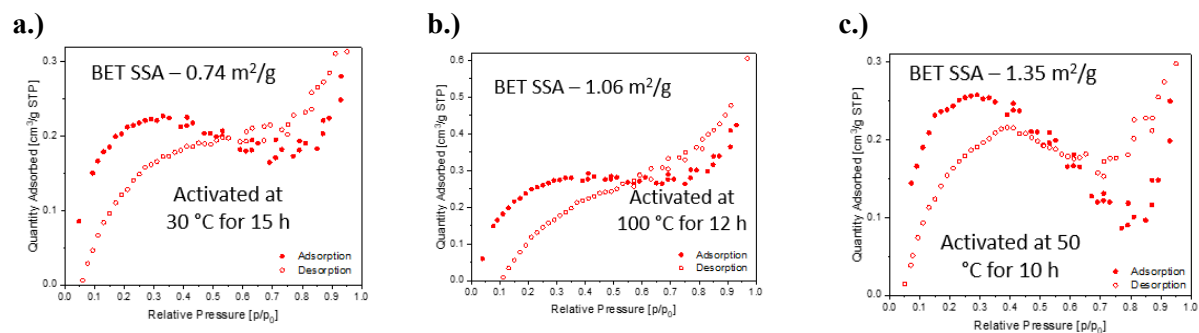
**Figure S2.** Superimposed FTIR spectra of AP, AP-cellulose, APCNC, MOCP/APCNC, and CCNC.

**Supplementary Information S3.** Thermogravimetric analysis (TGA) analysis



**Figure S3.** TGA curve for AP, AP-cellulose, APCNC, MOCP/APCNC, and CCNC.

**Supplementary Information S4.** Brunauer-Emmet-Teller (BET) surface analysis



**Figure S4.** Nitrogen adsorption-desorption isotherm for a.) APCNC, b.) MOCP/APCNC, and c.) CCNC.