

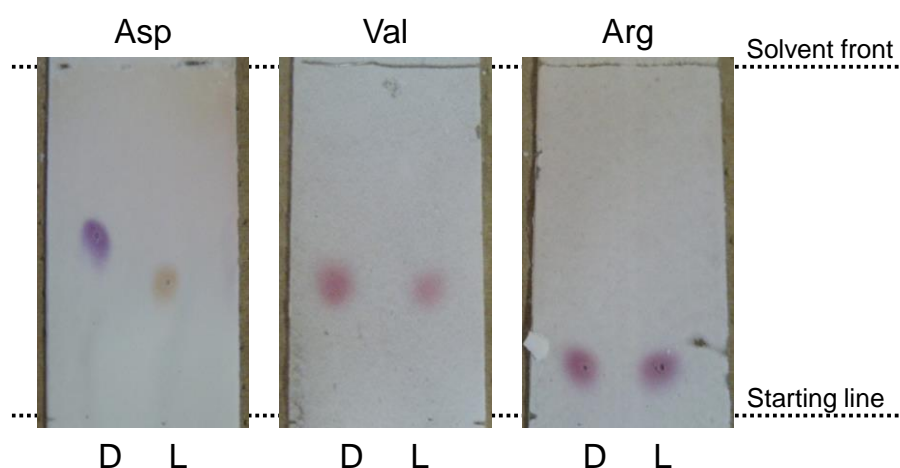
Article

# Chiral recognition by DNA-immobilized TLC plate

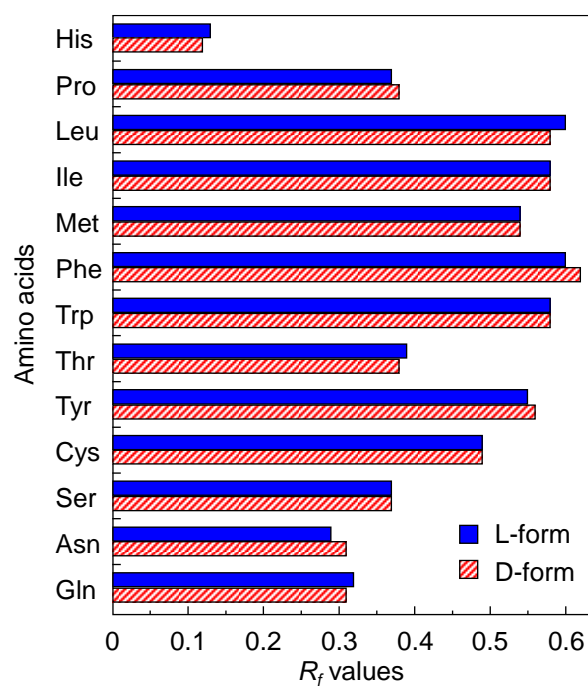
Masanori Yamada\* and Mami Inoue

Department of Chemistry, Faculty of Science, Okayama University of Science, Ridaicho 1-1, Kita-ku, Okayama 700-0005, Japan; inoue\_ous@yahoo.co.jp

\* Correspondence: myamada@chem.ous.ac.jp; Tel.: +81-86-286-9550



**Figure S1.** Photograph of L- and D-form amino acids (Asp, Val, and Arg) on DNA-TLC plate. The mobile phase is entry 1 in Table 1. The amino acid was detected by the ninhydrin reaction.



**Figure S2.**  $R_f$  values of L- and D-form amino acids on DNA-TLC plate. The mobile phase is entry 1 in Table 1. The amino acid was detected by the ninhydrin reaction. Each of the values represents the mean of three separate determinations.