

Erratum

# Erratum: Wang, D.; Vijapur, S.H.; Botte, G.G. Coal Char Derived Few-Layer Graphene Anodes for Lithium Ion Batteries. *Photonics* 2014, 1, 251–259

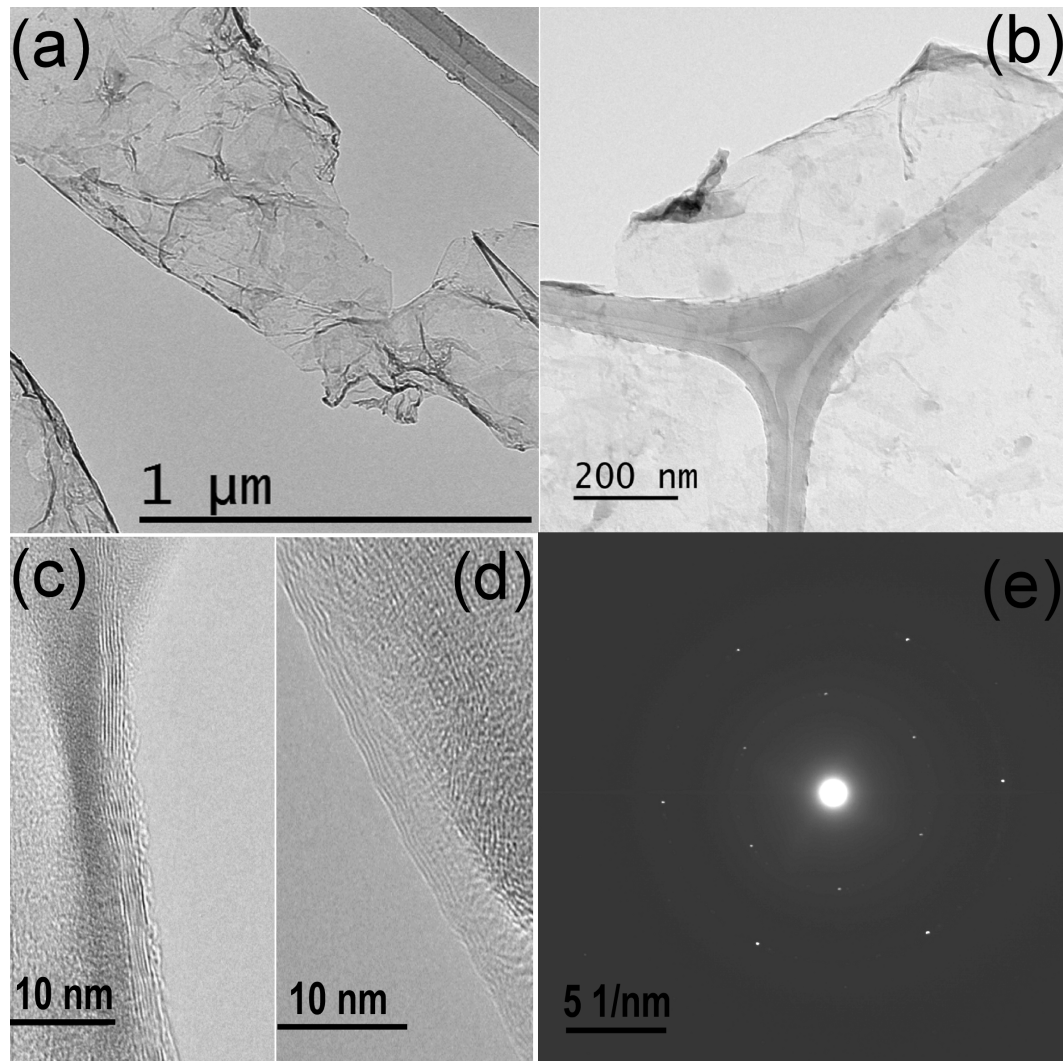
Photonics Editorial Office

MDPI AG, St. Alban-Anlage 66, 4052 Basel, Switzerland; photonics@mdpi.com

Received: 4 September 2018; Accepted: 10 September 2018; Published: 14 September 2018



After publication, the *Photonics* Editorial Office noticed that Figure 1 was in low resolution. To avoid confusion, we would like to replace it with a higher resolution version.



**Figure 1.** TEM images of large area and continuous graphene films (a,b). High-resolution TEM images of the edges of synthesized graphene films (c,d). Hexagonal selected area electron diffraction (SAED) pattern of the graphene films (e).

The error was made during production. We apologize for any inconvenience caused to the readers and authors by these mistakes. The manuscript will be updated and the original version will remain online on the article website. To maintain integrity of the resolution of the figures it is recommended to view the figures as a PDF file.

## References

1. Wang, D.; Vijapur, S.H.; Botte, G.G. Coal Char Derived Few-Layer Graphene Anodes for Lithium Ion Batteries. *Photonics* **2014**, *1*, 251–259. [[CrossRef](#)]



© 2018 by the author. Licensee MDPI, Basel, Switzerland. This article is an open access article distributed under the terms and conditions of the Creative Commons Attribution (CC BY) license (<http://creativecommons.org/licenses/by/4.0/>).