

SUPPLEMENTARY

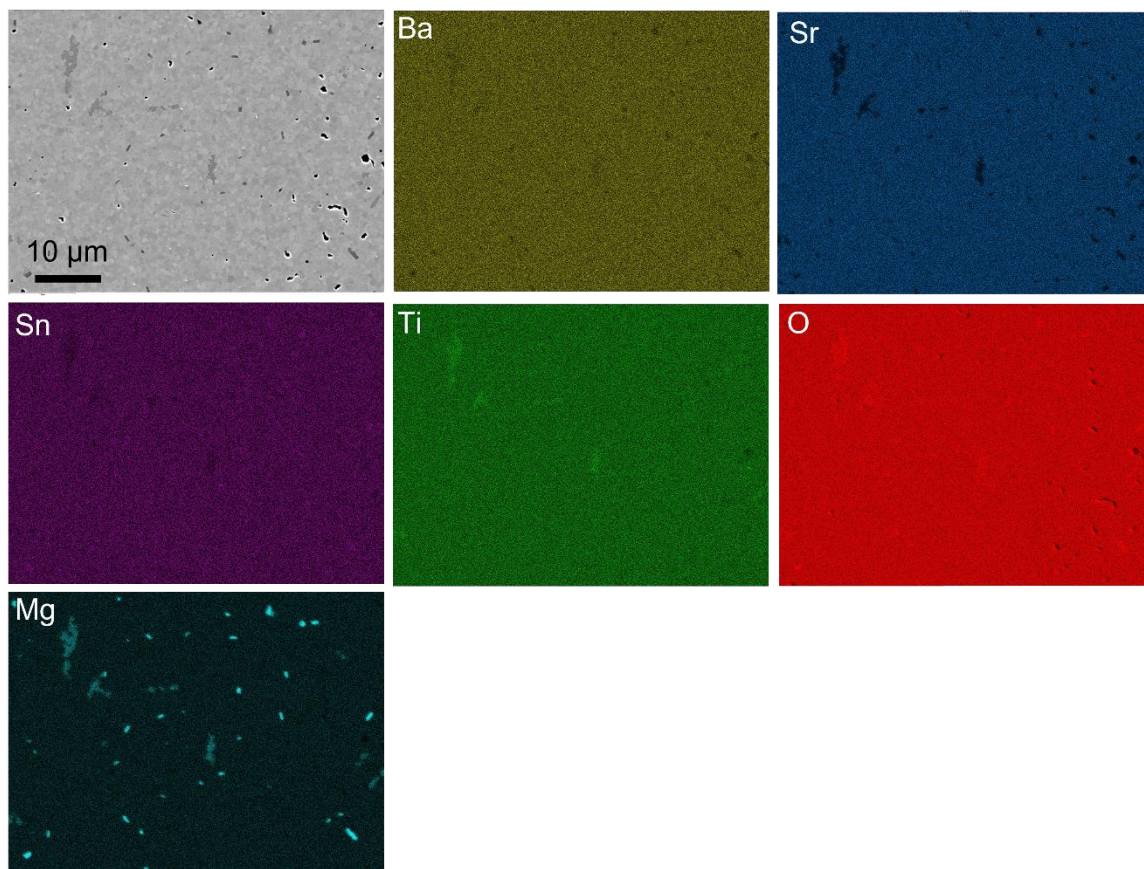


Figure S1. FESEM-EDX mapping of BSSnT-Mg illustrating the occurrence of Mg-rich phase for this composition.

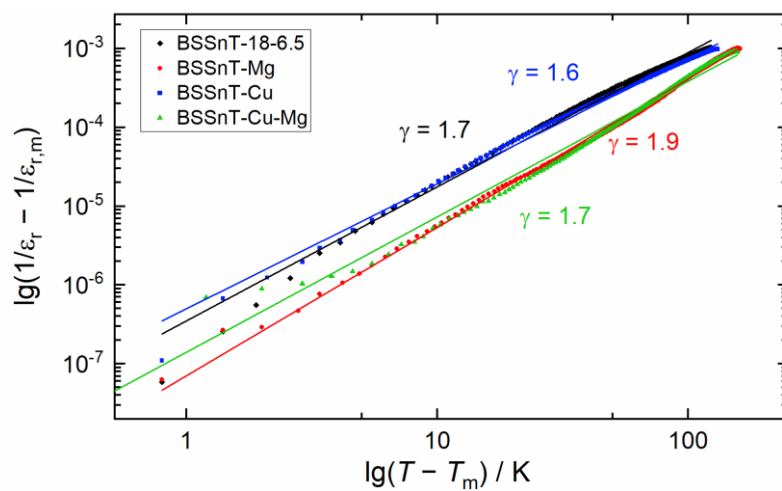


Figure S2. Plot of $\lg(1/\epsilon_r - 1/\epsilon_{r,m})$ versus $\lg(T - T_m)$ and fitted curves at 1 kHz for BSSnT-18-6.5 ceramics with different additives.

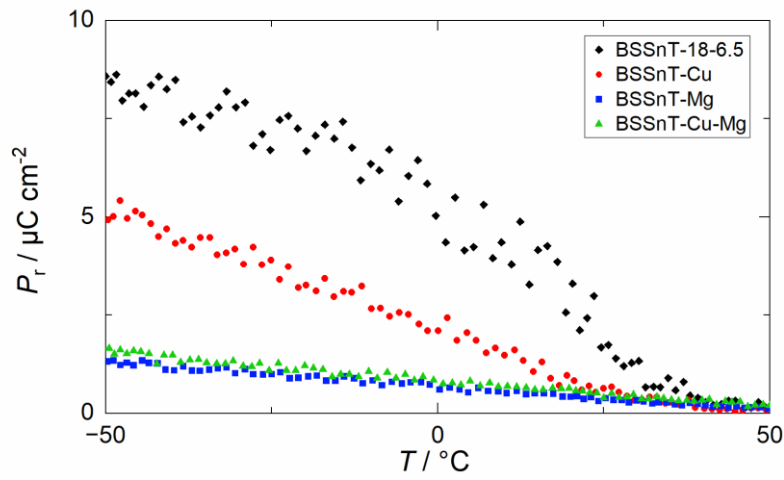


Figure S3. Temperature-dependent measurement of remanent polarization P_r for BSSnT-18-6.5 with different additives measured at $2 \text{ V } \mu\text{m}^{-1}$ and 10 Hz.

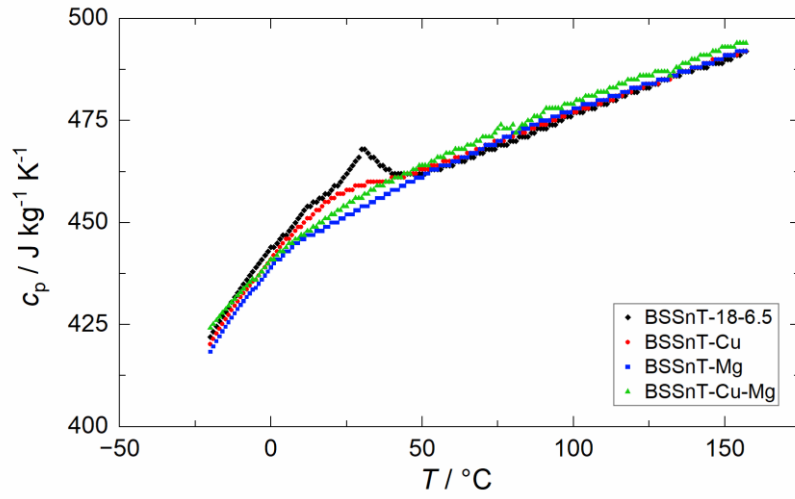


Figure S4. Specific heat capacity c_p in dependence of temperature T for BSSnT-18-6.5 with different additives.