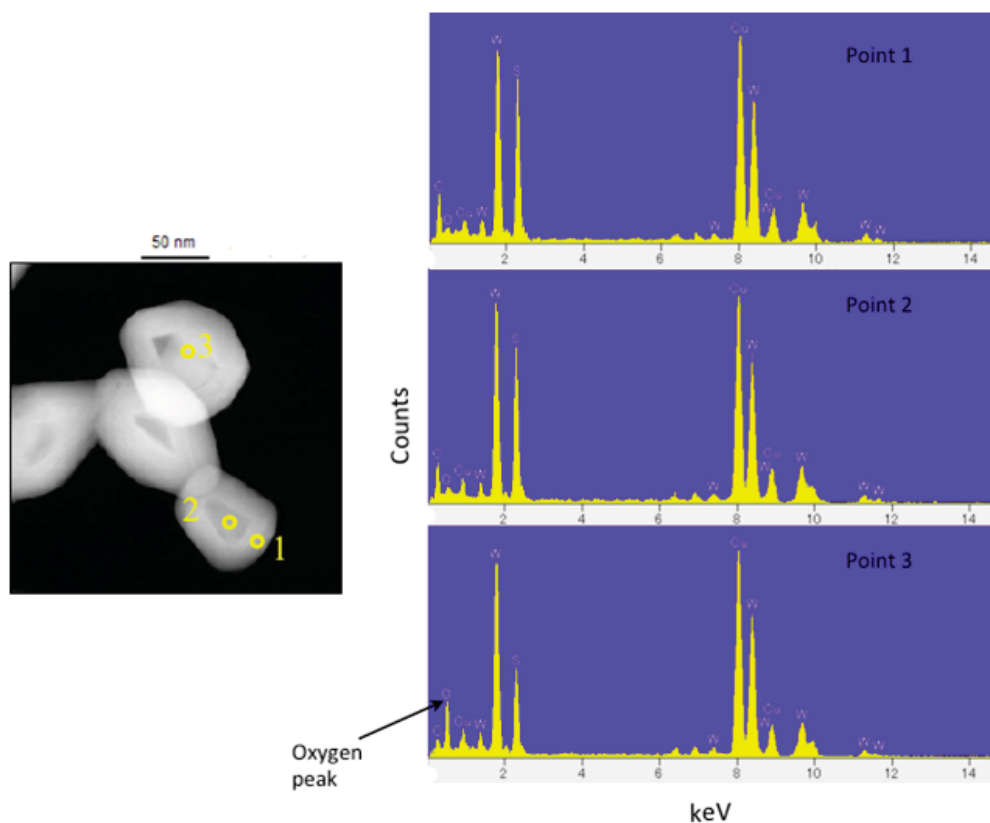


Supplementary Information

Figure S1. TEM image of IF-WS₂ nanoparticles (left) along EDS spectra (right) showing that in some locations WO₃ can be identified.



© 2014 by the authors; licensee MDPI, Basel, Switzerland. This article is an open access article distributed under the terms and conditions of the Creative Commons Attribution license (<http://creativecommons.org/licenses/by/3.0/>).