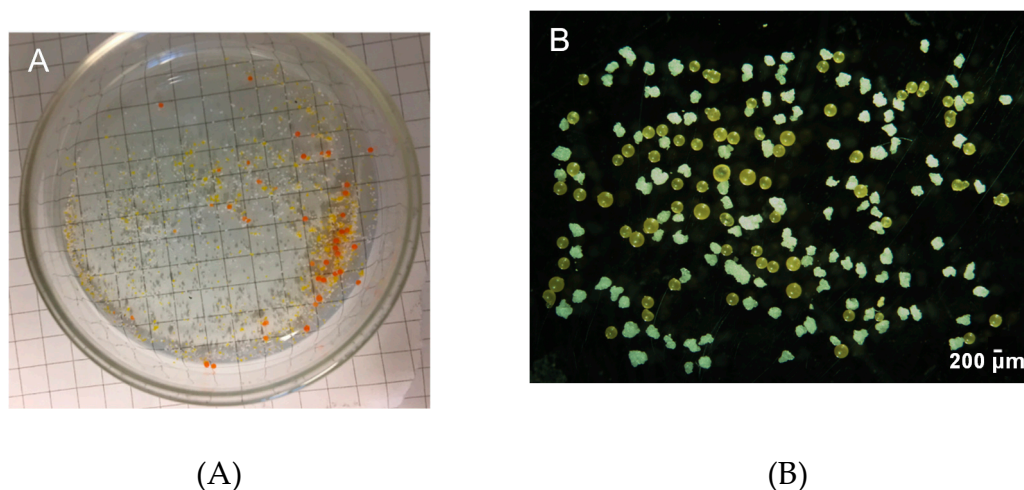
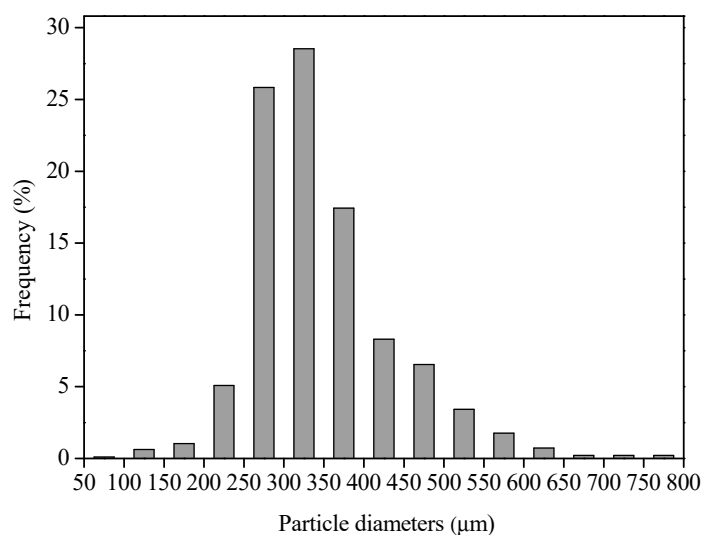


# Supplementary Materials: Uptake, Elimination and Effects of Cosmetic Microbeads on the Freshwater Gastropod *Biomphalaria glabrata*

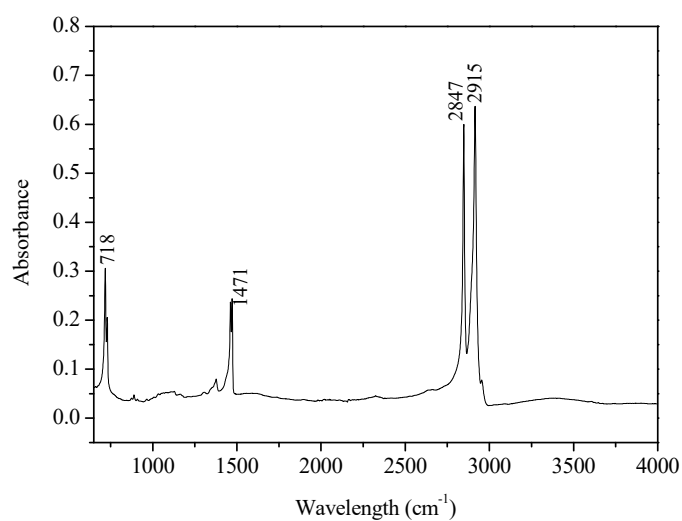
Ying Wang, Alice Baynes, Kofi O. Renner, Mingxing Zhang, Mark D. Scrimshaw and Edwin J. Routledge



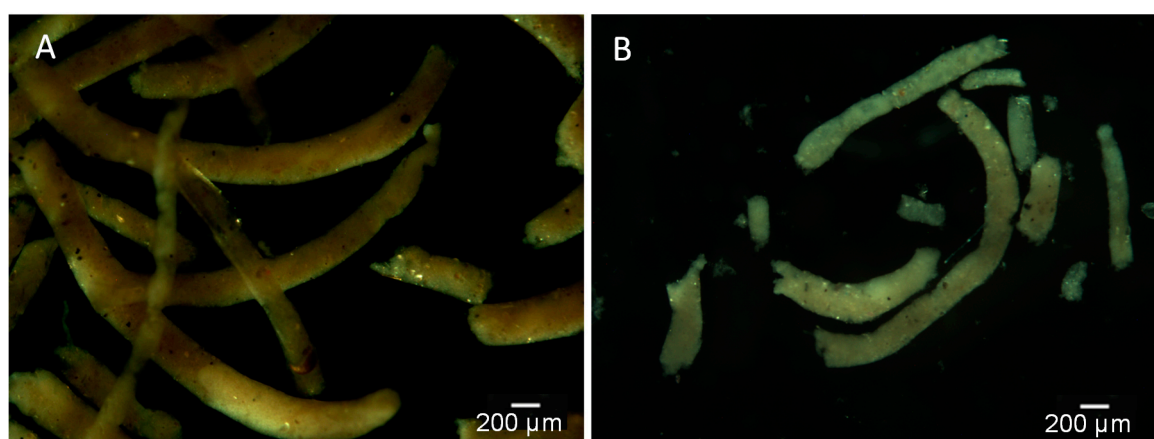
**Figure S1.** Microbeads (A) extracted from facial scrub and those (B) used for bioassays.



**Figure S2.** Size distribution of microbeads used for bioassays.



**Figure S3.** Fourier transform infrared (FT-IR) spectrum of the studied microbeads.



**Figure S4.** Faeces of adult (A) and young (B) *B. glabrata* in control groups over 48-h and 21-d exposures.

**Table S1.** Overview of the experimental design for experiment I-II.

Experiment	Content	Endpoints or operation	Test concentrations	Number of animals /replicate/treatment	Replicates	Number of animals in total
I Short-term (48 h)	Ingestion and egestion I(a))	Microplastic quantification	0, 4 particles/mL	5 (4 for Exp. I(a))	6	4 × 2 treatments × 6 replicates = 48
	Acute toxicity I(b))	Growth, survival	(5 mg/L)			5 × 2 treatments × 6 replicates = 60
II Long-term (21 d)	Ingestion and egestion II(a)	Microplastic quantification	0, 0.4 particle/mL	5 (4 for Exp. II(a))	6	4 × 2 treatments × 6 replicates = 48
	Chronic toxicity II(b)	Growth, survival	(0.5 mg/L)			5 × 2 treatments × 6 replicates = 60

**Table S2.** Statistical parameters of size distribution ( $\mu\text{m}$ ) of microbeads in different media for 48-h bioassay.

	Fragment				Sphere			
	Tissue	Faeces	Exposure medium	Standard	Tissue	Faeces	Exposure medium	Standard
<b>Min</b>	195	141	155	171	128	111	86	83
<b>Max</b>	906	816	672	789	629	443	427	442
<b>Average</b>	415	384	386	371	332	288	288	291
<b>SD</b>	109	103	104	90	66	65	57	52
<b>Number</b>	755	1102	79	660	351	67	162	304

**Table S3.** Statistical parameters of size distribution ( $\mu\text{m}$ ) of microbeads in different media for 21-day bioassay.

	Fragments			Spheres		
	Tissue <sup>a</sup>	Faeces <sup>b</sup>	Standard	Tissue <sup>a</sup>	Faeces <sup>b</sup>	Standard
<b>Min</b>	194	112	171	150	126	83
<b>Max</b>	900	842	789	558	636	442
<b>Average</b>	398	386	371	279	276	291
<b>SD</b>	115	91	90	62	72	52
<b>Number</b>	163	1106	660	375	86	304

<sup>a</sup> Tissue samples were collected at Day 21.

<sup>b</sup> Faeces samples were collected at Day 2, 4, 6, 8, 16 and 21; here shown is the statistical results for all of the faeces samples.